

THE EDEN AREA LOCAL WATERSHED PLAN

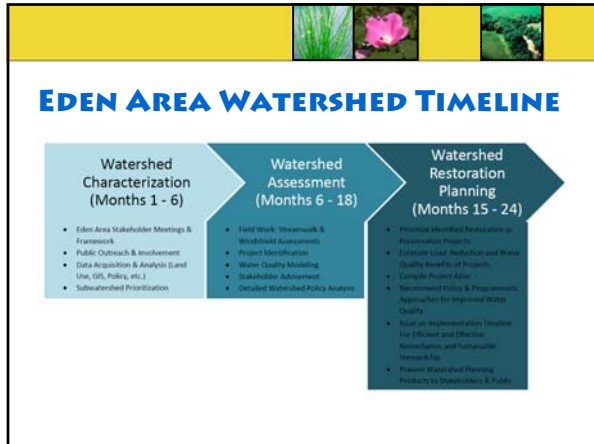
Presented by Elizabeth Jernigan
Piedmont Triad Regional Council

EDEN AREA WATERSHED

- 119 square miles
- Rockingham & Caswell Counties
 - Mostly forested
 - City of Eden
- Dan River Basin
 - 7 federally-listed species


Eden Area Watershed

- Rockingham County
- Caswell County
- City of Eden
- Dan River Basin
- Piedmont Triad Regional Council




EDEN AREA WATERSHED

- What We Are Seeing
 - Urban Growth
 - Illicit Discharges
 - Dams
 - Agriculture
 - Forestry Practices
 - Invasive Exotic Plants
 - Isolated incidences
 - Beautiful water



SUB WATERSHED 1




SUB WATERSHED 1

- Issues
 - Agriculture
 - Forestry

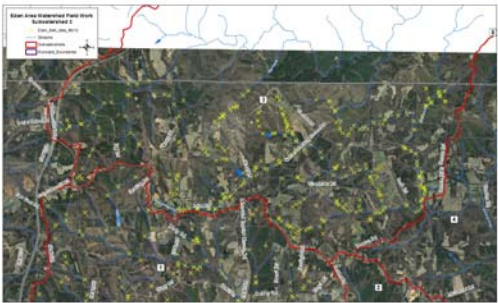


SUB WATERSHED 1

- Strengths
 - Buffers
 - Rural



SUB WATERSHED 3





SUB WATERSHED 3

- Issues
 - Agriculture
 - Crossings
 - Forestry
 - Historic Culverts







SUB WATERSHED 3

- Strengths
 - Water
 - Buffers
 - Logging Stewards





SUB WATERSHED 8




SUB WATERSH

- Issues
 - Sewer
 - Septic
 - Agg
 - Dams
 - Integrity
 - Crossings
 - Trash



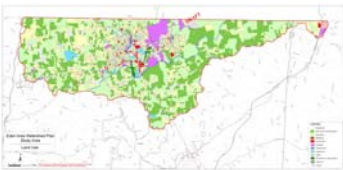
SUB WATERSHED 8

- Strengths
 - Greenway potential
 - Buffers
 - Wetlands



EDEN AREA WATERSHED TIMELINE

- Field Work
 - Feb-March 2012
- Watershed Assessment
 - July 2012
- Restoration Plan
 - December 2012





QUESTIONS:

Elizabeth Jernigan
Stormwater Outreach and Education
Coordinator
Piedmont Triad Regional Council
ejernigan@ptcra.org
336-294-4960
www.edenareawater.org