

# Upper Cape Fear River Basin Association

Technical Advisory Committee— October 25<sup>th</sup>, 2022

# Agenda

## **10:00-10:15 - Open TAC Meeting**

(Maya Cough-Schulze, TJCOG)

- Introductions
- Review agenda and invite any revisions

## **10:15-11:00 - Organizational Report**

- QA/QC Report
- DWR Cape Fear Basin Plan update
- Membership update – Durham County and Siler City
- Draft FY24 Dues and Budget Scenarios

(Alicia Goots, Greensboro)  
(Nora Deamer, NCDEQ)  
(COG staff)  
(Grace Messinger, PTRC)

## **11:00-11:35 – Open discussion time on emerging contaminants**

(All)

- Challenges, questions, time to learn from one another
- Research questions relevant to utilities, funding availability

## **11:35-11:55 - Updates from around the Upper Basin**

(All)

## **11:55-12:00 - Next Steps, Closing Remarks, Future Meeting Schedule**

(Maya Cough-Schulze, TJCOG)

- Review any next steps
- Future meeting dates
- Ideas for future speakers/meeting topics

## **12:00 - ADJOURN for lunch**

(All)

# Organizational Report

## Updates, Discussion

# QA/QC Report: 10/19/2022

July 2022 Upper Cape Fear Monitoring Data - WQS Violations

UCFRBA Site #	Date	Parameter	Reported Value	NC WQ Standard
19	7/15/22	Turbidity	50.5	50 NTU
20	7/19/22	Turbidity	83.1	50 NTU
21	7/15/22	Turbidity	191	50 NTU
22	7/15/22	Turbidity	107	50 NTU
1	7/25/22	Dissolved Oxygen	2.0	≥4.0 mg/l
2	7/25/22	Dissolved Oxygen	3.7	≥4.0 mg/l
18	7/26/22	Dissolved Oxygen	3.4	≥4.0 mg/l
19	7/2/22	Dissolved Oxygen	2.2	≥4.0 mg/l
26	7/26/22	Dissolved Oxygen	3.8	≥4.0 mg/l
28	7/13/33	Dissolved Oxygen	0.2	≥4.0 mg/l
43	7/14/22	Dissolved Oxygen	3.7	≥4.0 mg/l
46	7/26/22	Dissolved Oxygen	3.9	≥4.0 mg/l

August 2022 Upper Cape Fear Monitoring Data – WQS Violations

UCFRBA Site #	Date	Parameter	Reported Value	NC WQ Standard
21	8/1/22	Turbidity	134	50 NTU
1	8/19/22	Dissolved Oxygen	3.4	≥4.0 mg/l
18	8/10/22	Dissolved Oxygen	2.9	≥4.0 mg/l
18	8/30/22	Dissolved Oxygen	3.2	≥4.0 mg/l
19	8/1/22	Dissolved Oxygen	2.8	≥4.0 mg/l
19	8/18/22	Dissolved Oxygen	3.1	≥4.0 mg/l
45	8/10/22	Dissolved Oxygen	3.5	≥4.0 mg/l
46	8/10/22	Dissolved Oxygen	3.3	≥4.0 mg/l

# QA/QC Report

## September 2022 Upper Cape Fear Monitoring Data- WQS Violations

UCFRBA Site #	Date	Parameter	Reported Value	NC WQ Standard
21	9/22/22	Turbidity	61.6	50 NTU
18	9/6/22	Dissolved Oxygen	3.6	≥4.0 mg/l
18	9/23/22	Dissolved Oxygen	0.5	≥4.0 mg/l
19	9/1/22	Dissolved Oxygen	3.3	≥4.0 mg/l
19	9/22/22	Dissolved Oxygen	2.3	≥4.0 mg/l
21	9/22/22	Dissolved Oxygen	3.4	≥4.0 mg/l
42	9/6/22	Dissolved Oxygen	3.9	≥4.0 mg/l
45	9/6/22	Dissolved Oxygen	3.9	≥4.0 mg/l

## OTHER ISSUES AND COMMENTS

Comment: At Site 28 (Richland Creek at SR 1154-Kersey Valley Road-Upstream of High Point Eastside Treatment Plant) on July 13, 2022 the following was recorded by the field staff: "Water is a dark blue/green color. Doesn't appear to be algae. Looks more like a dye. Never looked like this in the past." "Fish visible, dead." D. O. recorded was 0.18 mg/l.

## July, August, September 2022 – Upper Cape Fear Data Notations/Corrections

Parameter	UCFRBA Site#	Date	Reported Value	Corrected Value
Total Phosphorus	20	9/22/22	Run said Site 10	Data was for Site 20
Time	2	7/13/22	14:04	17:04
pH	46	9/6/22	8.6 units	8.0 units
Ammonia	43	8/10/22	0.02 mg/l	<0.02 mg/l
TKN	21	8/1/22	0.71 mg/l	0.69 mg/l
TKN	46	9/6/22	0.92 mg/l	0.99 mg/l
Fecal	19	7/15/22	885	570
Fecal	21	7/15/22	15,400	>15,400

# Cape Fear River Basin Plan: Update

Nora Deamer: [Nora.Deamer@ncdenr.gov](mailto:Nora.Deamer@ncdenr.gov)

**2022 CAPE FEAR RIVER BASIN PLAN**

In Partnership with:  
DEQ - Division of  
Water Resources  
& Cape Fear River  
Assembly

Photo Credit: Nancy Hulbert

**CFRA**  
Cape Fear River  
Assembly

**DEQ**  
North Carolina  
Department of Environmental Quality

## Timeframe

- CFRB Plan -and Process Development  
Q2 2022
- Attend Community Meetings  
June - September 2022
- Gather All Public Comment  
Complete by October 1,  
2022
- Submit Basin Plan to the EMC  
end of December 2022  
\*Environmental Management  
Commission

## Goals

- Develop a plan that is relevant, informative and can be adapted as needed
- Include the input of community members, stakeholders, and organizations currently working and living on the river
- Expand our reach to all populations and listen to voices of underrepresented communities, communities of Color and Indigenous Communities
- Identify priority issues from all the input and information gathered



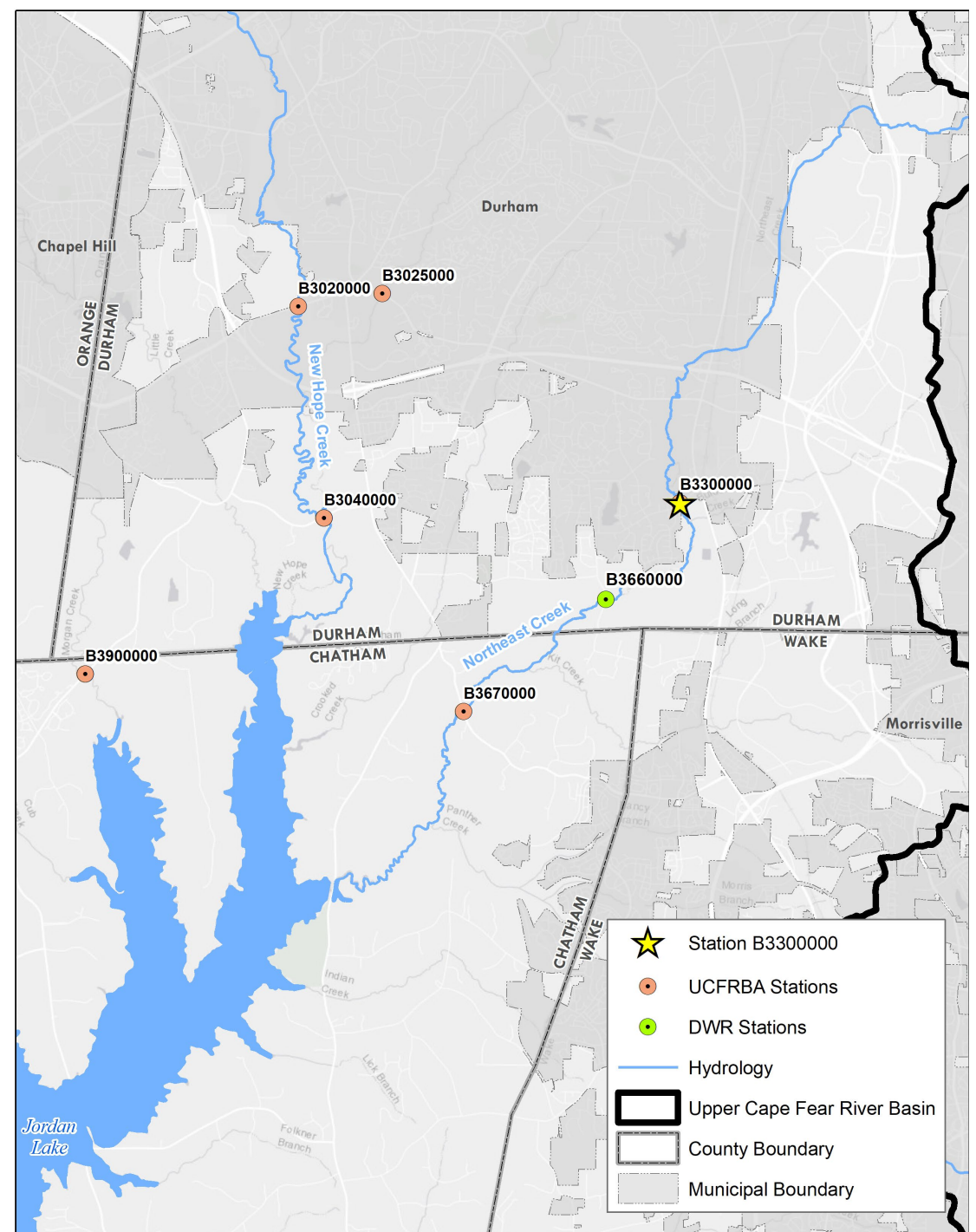
# Organizational Report

- **Membership Update/Permit**
  - Durham County;
    - new permit
    - station #B3300000
  - Siler City:
    - new permit requirements;
    - removed monitoring waiver
- **Draft FY23-24 Dues & Budget Projections**

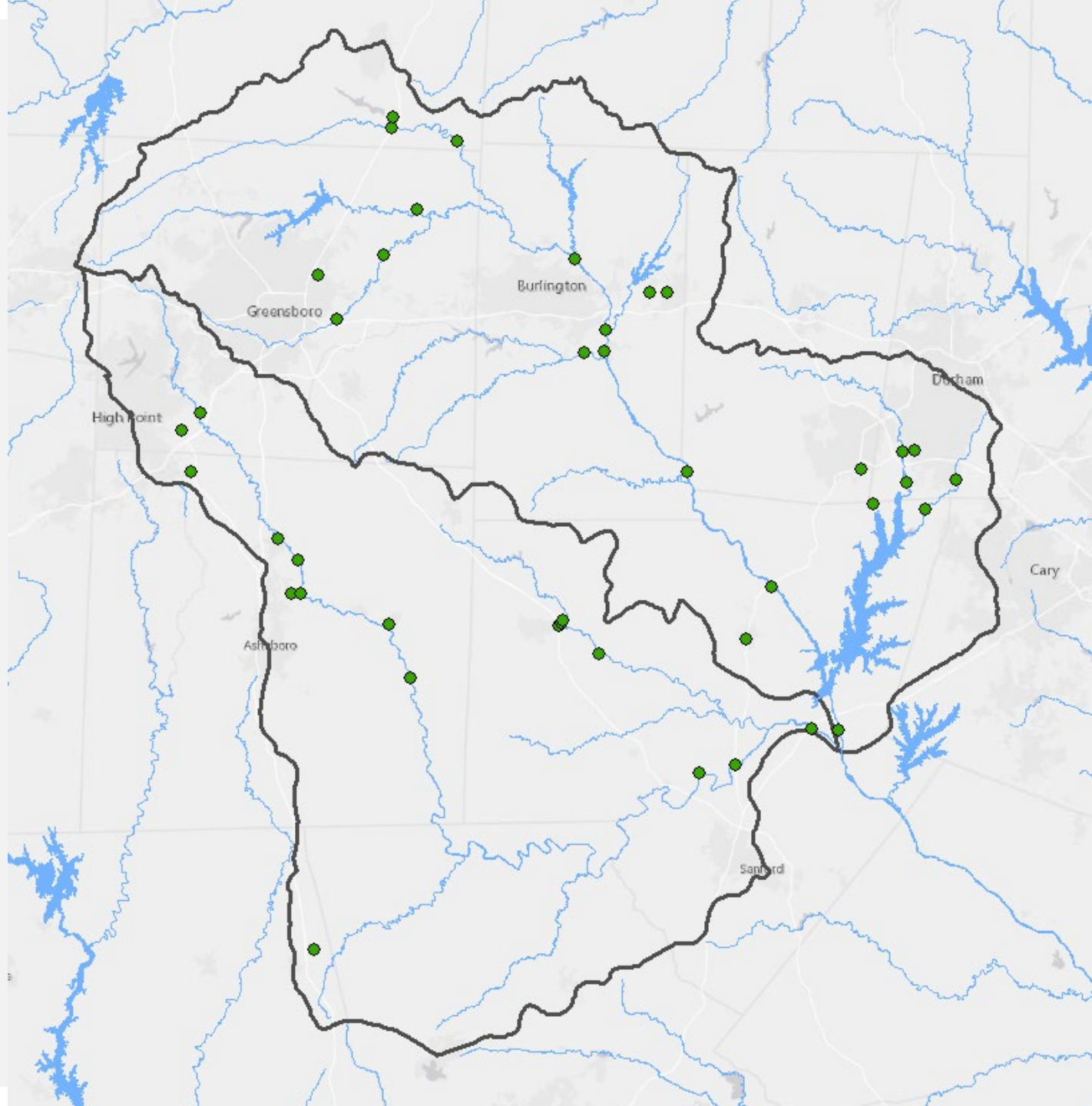
# Station B330000

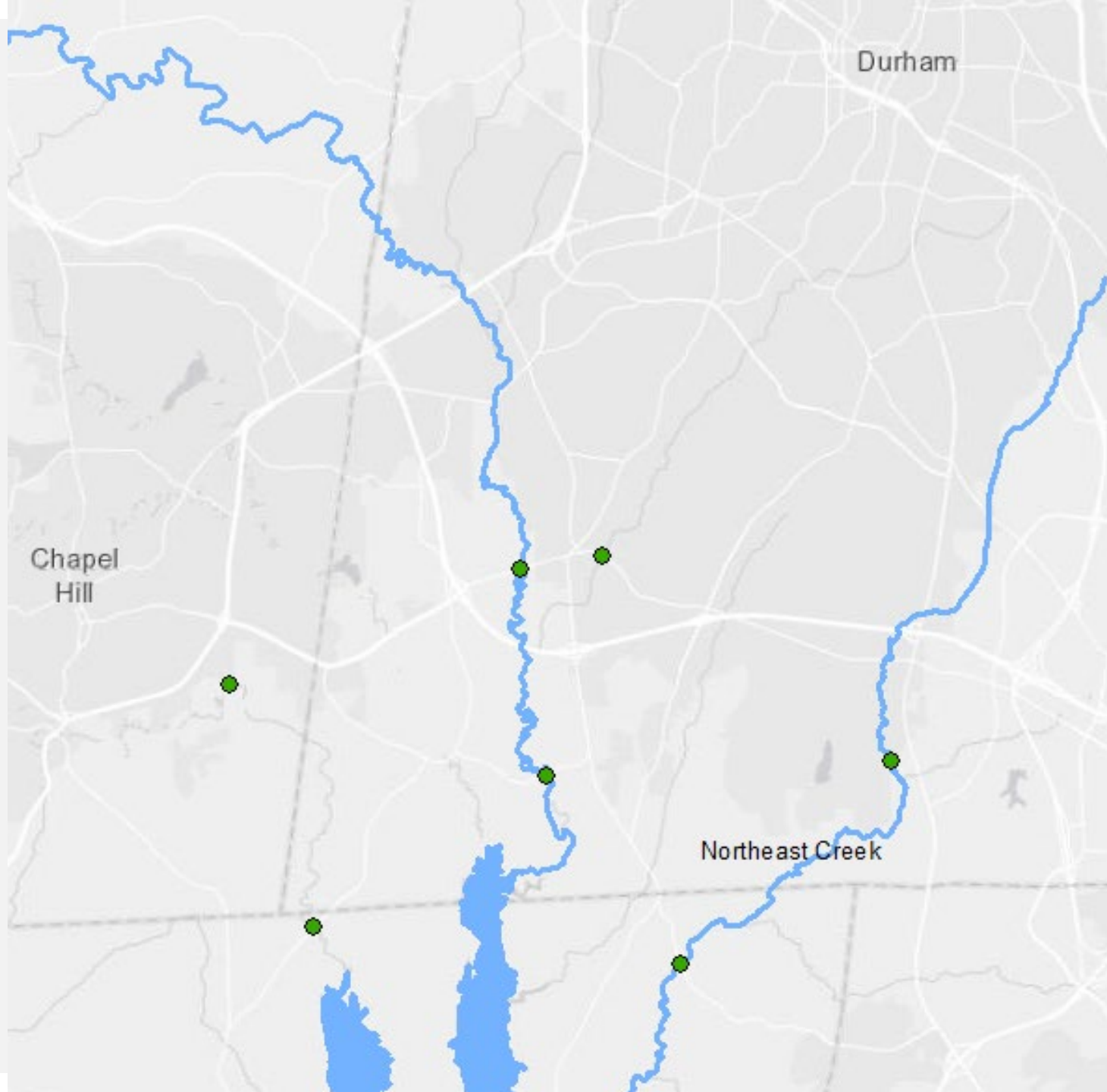
## Station B330000 (Previously UCFRBA #21)

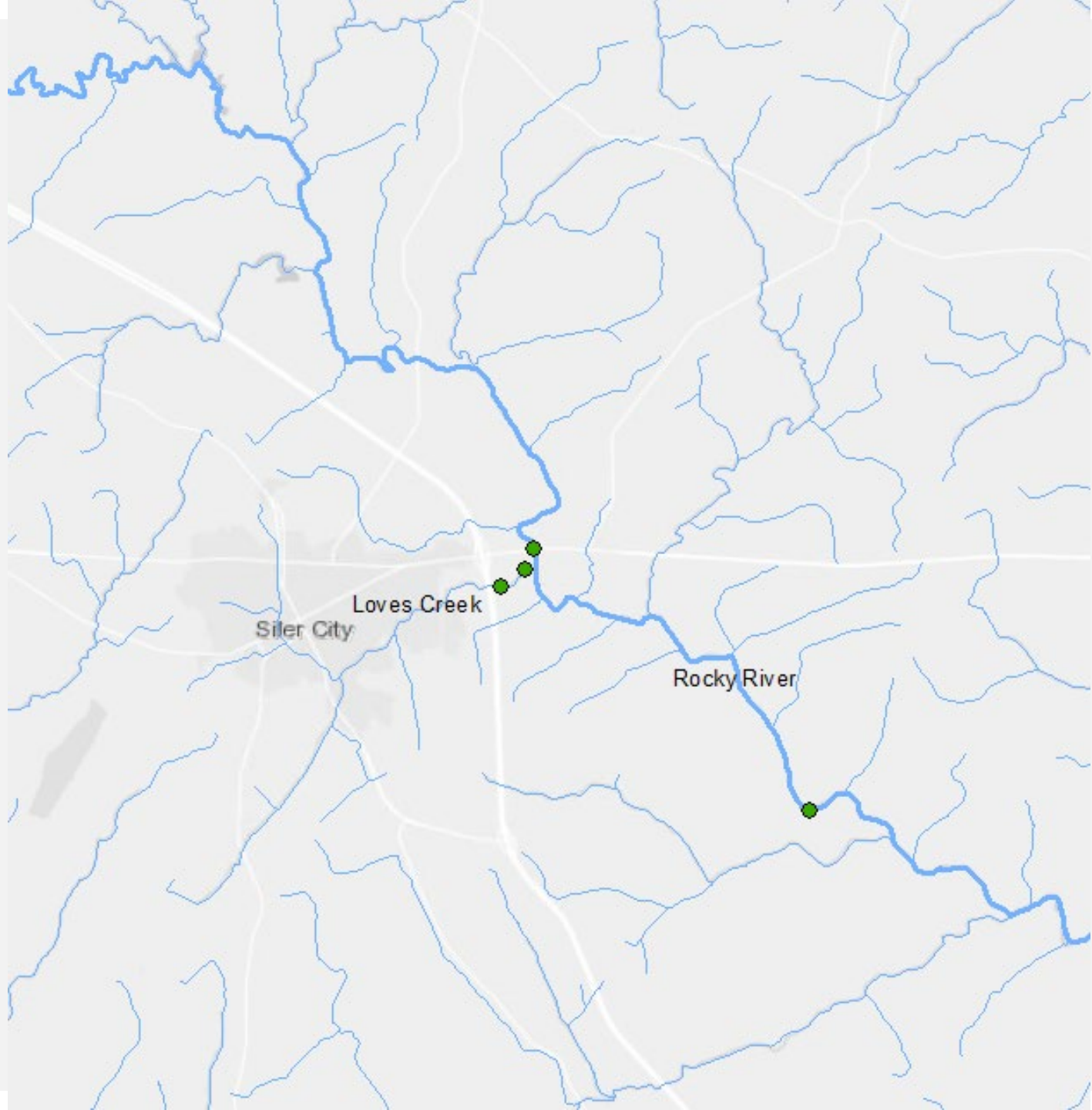
- Location: Northeast Creek at SR 1102 Sedwick Road near RTP. Upstream of Durham County/RTP WWTP
- Removed ~2015 when Durham County left the coalition
- Previously sampled bi-monthly during growing season
- Durham requested re-adding this station because of its value to Public Works/Stormwater, but would provide other benefits.
- Other stations along Northeast Creek are sampled bi-monthly during growing season













# Financial Report

**FY2022-2023**

# FY22-23 Financial Report

Revenues	FY2022-2023 Budget	FY 2022-2023 Actual <small>as of</small> 10/14/22
Membership Dues	\$148,518	\$82,677
Interest Earned	\$109.36	\$0.00
<b>Total Revenues</b>	<b>\$138,351</b>	<b>\$82,677</b>
Expenses		
Meritech	\$102,471.36	\$33,777.47
Database	\$1,625	\$1,625
Insurance	\$2,701.98	\$2,727
TJCOG	\$23,000	\$23,000
PTRC	\$23,000	\$23,000
CFRA Membership	\$300	\$300
<b>Total Expenses</b>	<b>\$153,098.34</b>	<b>\$84,129.47</b>
Net to/from Fund Balance	<b>-\$4,470.98</b>	
<b>Contingency Balance</b>	<b>\$175,549.85</b>	

Unpaid dues 8 members

- October new rate per contract



# FY2023-2024

## Forecast

# FY23-24 Durham (Associate Member), Siler City (Base Rate)

Associate Members	Permitted Capacity (MGD)	Proportional Share of Total MGD	Total # of Instream Sites	Proportional Share of Instream Sites	FY 23-24 Base Rate	FY 23-24 Proportional Rate	FY 23-24 Membership Dues	FY 22-23 Membership Dues Invoiced	Difference from FY 22-23	% Increase
Arclin WWTP (was Dynea)	0.1	0.1%	1.5	3.6%	\$770	\$69	\$839	\$842	\$3	0%
Asheboro WWTP	9	4.7%	2.5	6.0%	\$770	\$6,170	\$6,941	\$7,209	\$268	-4%
Burlington - Eastside WWTP	12	6.2%	2	4.8%	\$770	\$8,227	\$8,997	\$9,355	\$358	-4%
Burlington - Southside WWTP	12	6.2%	2	4.8%	\$0	\$8,227	\$8,227	\$8,585	\$358	-4%
Chatham Park WWTP	0.499	0.3%	0.5	1.2%	\$770	\$342	\$1,113	\$1,127	\$14	-1%
<b>Durham County</b>	<b>12</b>	<b>6.2%</b>	<b>1</b>	<b>2.4%</b>	<b>\$770</b>	<b>\$8,227</b>	<b>\$8,997</b>	<b>\$0</b>	<b>(\$8,997)</b>	<b>100%</b>
South Durham WRF	20	10.4%	2	4.8%	\$770	\$13,711	\$14,482	\$15,077	\$595	-4%
Graham WWTP	3.5	1.8%	2	4.8%	\$770	\$2,400	\$3,170	\$3,274	\$104	-3%
Greensboro - T.Z. Osborne WWTP	56	29.1%	3.5	8.4%	\$770	\$38,392	\$39,163	\$40,830	\$1,667	-4%
High Point - East Side WWTP	26	13.5%	2.5	6.0%	\$770	\$17,825	\$18,595	\$19,370	\$775	-4%
Mebane WWTP	2.5	1.3%	2	4.8%	\$770	\$1,714	\$2,484	\$2,559	\$75	-3%
OWASA - Mason Farm WWTP	14.5	7.5%	2	4.8%	\$770	\$9,941	\$10,711	\$11,143	\$432	-4%
Pilgrim's Pride Processing Plant (Gold Kist)	1	0.5%	1	2.4%	\$770	\$686	\$1,456	\$1,486	\$30	-2%
Pittsboro WWTP	0.75	0.4%	2.5	6.0%	\$770	\$514	\$1,285	\$1,307	\$22	-2%
Ramseur WWTP	0.48	0.2%	2	4.8%	\$770	\$329	\$1,100	\$1,114	\$14	-1%
Randleman WWTP	1.745	0.9%	2	4.8%	\$770	\$1,196	\$1,967	\$2,019	\$52	-3%
Reidsville WWTP	7.5	3.9%	3.5	8.4%	\$770	\$5,142	\$5,912	\$6,136	\$224	-4%
Sanford WWTP	12	6.2%	1.5	3.6%	\$770	\$8,227	\$8,997	\$9,355	\$358	-4%
<b>Siler City WWTP</b>		<b>0.0%</b>	<b>4.5</b>	<b>10.8%</b>	<b>\$770</b>	<b>\$0</b>	<b>\$770</b>	<b>\$3,632</b>	<b>\$2,862</b>	<b>-372%</b>
Star WWTP	0.6	0.3%	1	2.4%	\$770	\$411	\$1,182	\$1,200	\$18	-2%
<b>SUBTOTALS</b>	<b>192.17</b>	<b>100%</b>	<b>41.50</b>	<b>100%</b>	<b>\$14,638</b>	<b>\$131,749</b>	<b>\$146,388</b>	<b>\$145,620</b>	<b>\$768</b>	

Cary					\$770	-	\$770			
City of Durham Public Works Stormwater (B3300000)			1		\$0	\$0	\$0			

**Total Income:**  
**\$147,158**

# FY2023-2024 Projection with Changes

Revenues	FY 2023-2024 (Stations- same) (a)	FY 2023-2024 (2 less stations) (b)	FY 2019-2020 Projected (c)
Membership Dues	\$147,157	\$147,157	\$147,157
Interest Earned	\$111.55	\$111.55	\$111.55
<b>Total Revenues</b>	<b>\$147,269</b>	<b>\$147,269</b>	<b>\$147,269</b>
Expenses			
Meritech	\$105,367	\$100,352	\$95,338
Database	\$1,625	\$1,625	\$1,625
Insurance	\$2,783	\$2,783	\$2,783
TJCOG	\$23,000	\$23,000	\$23,000
PTRC	\$23,000	\$23,000	\$23,000
CFRA Membership	\$300	\$300	\$300
<b>Total Expenses</b>	<b>\$155,775</b>	<b>\$151,060</b>	<b>\$146,046</b>
176,	<b>-\$8,506</b>	<b>-\$3,791</b>	<b>\$1,223</b>
<b>Contingency Balance</b>	<b>\$167,043</b>	<b>\$171,758</b>	<b>\$176,772</b>

a) Add Durham County Proportional + Base  
Remove Siler City Proportional Rate, keep Base membership rate  
Keep all 41 sampling stations

b) Expenses: Remove 2 sampling stations; sample 39 stations

c) Expenses: Remove 4 sampling stations; sample 37 stations



# Open Discussion: Emerging Contaminants

Upcoming Trainings on Technologies for PFAS Disposal, Treatment and Destruction

1) <https://wri.ncsu.edu/wri-pfas-workshop-series/>

- Third session is **tomorrow**, October 26, and is free

2) [PFAS 2022 Preliminary Program.pdf \(awma.org\)](#)

- Nov 8-10, \$450 to attend one day or \$675 government rate for three days (sessions 8 and 12 most relevant)

# Next Steps

Follow-up tasks from this meeting

- Confirm Member contacts and any chances of staff with Maya and Grace

Next meeting: Joint BOD/TAC - **Tues January 24<sup>th</sup>** (Virtual)

Confirm plan: 2x/year virtual, 2x/year in-person

Vote on TAC speaker or discussion topic:

- Strategies for developing the next generation of the workforce in this field
- Update from NC One Water Association (NC-AWWA/WEA)

# Questions

Grace Messinger  
Water Resources Planner  
[gmessinger@ptrc.org](mailto:gmessinger@ptrc.org)

Maya Cough-Schulze  
Senior Water Resources  
Planner  
[mcough-schulze@tjcog.org](mailto:mcough-schulze@tjcog.org)





**THANK YOU**

Maya Cough-Schulze  
Senior Water Resources Planner  
[Mcough-schulze@tjcog.org](mailto:Mcough-schulze@tjcog.org)

Grace Messinger  
Water Resources Planner  
[gmessinger@ptrc.org](mailto:gmessinger@ptrc.org)

