

Upper Cape Fear River Basin Association (UCFRBA)

UCFRBA 2017 Annual Report

Prepared for NC Division of Water Resources

Submitted: April 2018

Submitted by:

Cameron Colvin
Water Resources Planner
Piedmont Triad Regional Council
1398 Carrollton Crossing Dr
Kernersville, NC 27284

UCFRBA 2017 Annual Report

Table of Contents

| | |
|---|----|
| <i>Background</i> | 1 |
| <i>Organizational Structure</i> | 3 |
| Board of Directors..... | 4 |
| Officers | 5 |
| Technical Advisory Committee..... | 5 |
| QA/QC Subcommittee | 5 |
| Information Management Subcommittee | 5 |
| <i>Summary of Monitoring Program</i> | 6 |
| Sampling Methods..... | 10 |
| <i>2017 UCFRBA Issues</i> | 10 |
| Bylaw Update..... | 10 |
| Hardness Monitoring | 10 |
| Emerging Contaminants..... | 10 |
| DWR Nutrient and Dissolved Oxygen Model..... | 11 |
| NC DWR/Meritech Field Visit..... | 11 |
| <i>APPENDIX A: UCFRBA Board of Directors</i> | 12 |
| <i>APPENDIX B: UCFRBA Technical Advisory Committee</i> | 16 |
| <i>APPENDIX C: UCFRBA Sampling Procedures</i> | 19 |
| <i>APPENDIX D: NC DWR 2012 Metals Monitoring Suspension Letter</i> | 22 |
| <i>APPENDIX E: UCFRBA Dissolved Metals Special Study Letter to NC DWR</i> | 23 |
| <i>APPENDIX F: UCFRBA Monitoring Services Contract</i> | 25 |
| <i>APPENDIX G: NC DWR 2015 Field Visit</i> | 33 |

Background

The Upper Cape Fear River Basin Association (UCFRBA) was created as a non-profit organization in February of 2000. It was the last basin association to be formed in the Cape Fear River Basin. The Upper Cape Fear River Basin includes more than 10 counties and 30 municipalities, and nearly 150 permitted wastewater discharge facilities. The permitted wastewater discharges total more than 140 million gallons per day (MGD). Long-term water resources planning, management and protection in this rapidly growing 3,100 square mile area are challenging and complex tasks. To meet these increasing challenges, 20 parties comprising local governments (with planning and zoning jurisdiction and wastewater treatment plants) and private companies joined together to establish the UCFRBA. The UCFRBA currently has 18 members representing public and private sector entities who rely upon the river for wastewater discharge.

In concert with the Middle and Lower Basin Programs, the Upper Basin has implemented a comprehensive water quality monitoring program in exchange for a waiver of the ambient monitoring requirements in the Association members' individual **National Pollutant Discharge Elimination System (NPDES)** permits. The Association signed a Memorandum of Agreement (MOA) with the North Carolina Division of Water Resources (NCDWR) binding its members to participate in the monitoring program. The monitoring program started in April 2000; the MOA was renewed in 2005, 2010, and 2015.

The UCFRBA provides an ongoing forum for interested parties to work together on water resources planning, management and protection issues of mutual concern in the Jordan Lake watershed (including the Haw River and New Hope Creek subwatersheds), the Deep River watershed and the Rocky River watershed in the uppermost part of the Cape Fear River Basin. Geographically, the headwaters of the Haw River and Deep River start west of Greensboro in Forsyth County and come together below Jordan Lake to form the Cape Fear River (Figure 1).

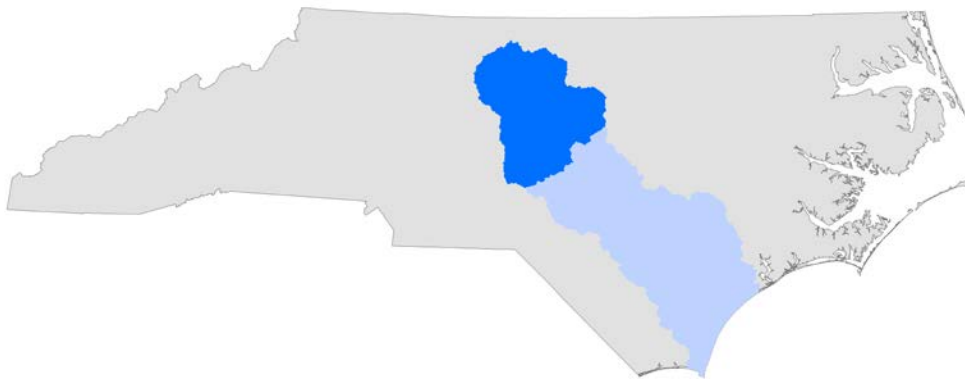
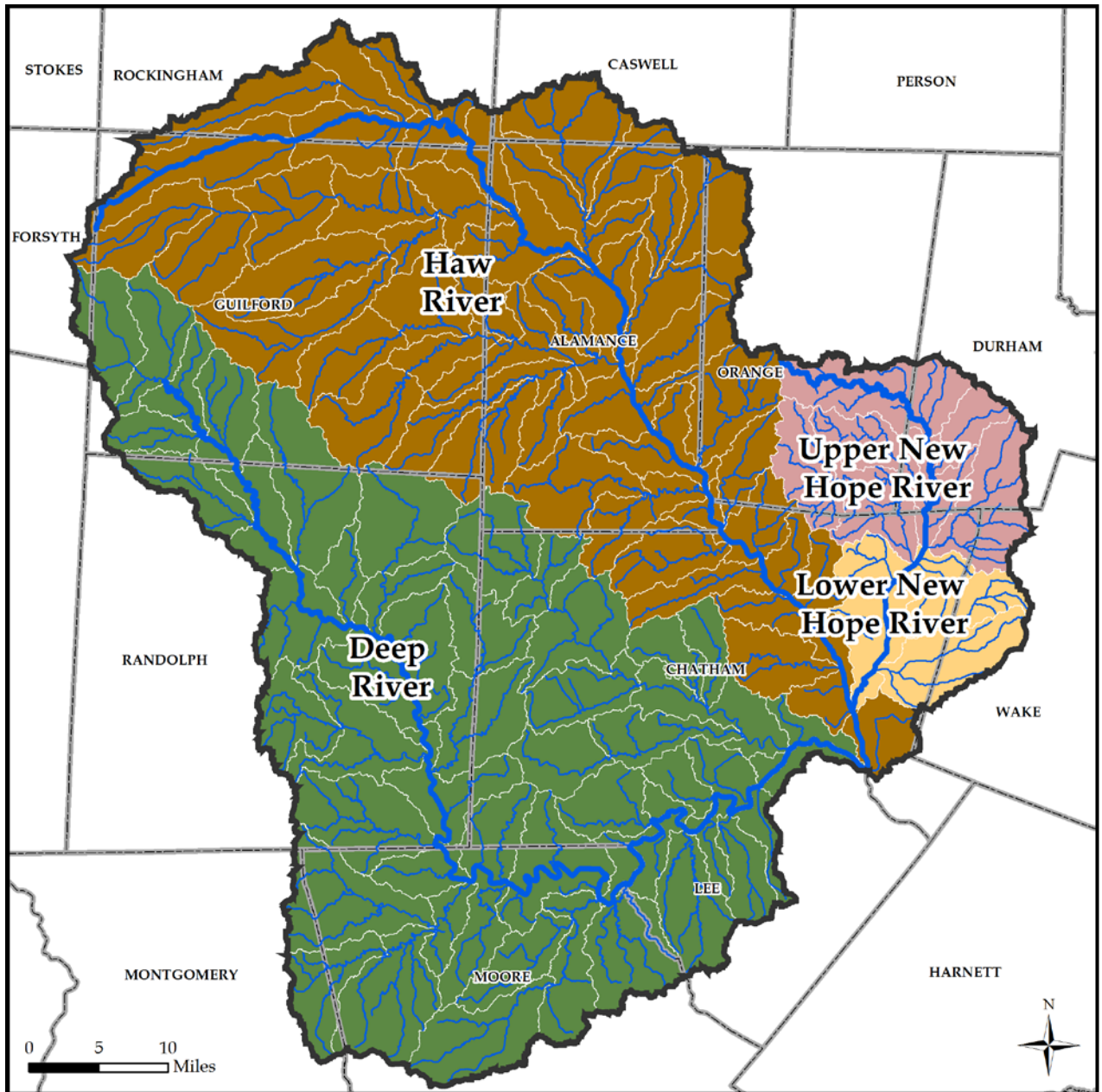


Figure 1: Upper Cape Fear River Basin

Laboratory services are currently provided by Meritech Inc., located in Reidsville, NC. Meritech, Inc. has provided these services since 2005. SimaLabs, Inc., was the Association's laboratory for conducting stream monitoring and analyses until August 2004.

The Triangle J Council of Governments (TJCOG) and Piedmont Triad Regional Council (PTRC) provide administrative staff support for the UCFRBA. More information about the UCFRBA, including access to its water quality database can be found at PTRC's dedicated website (<http://www.ptrc.org/ucfrba>).



Upper Cape Fear River Basin Prioritization

Overview Map

Subwatersheds

- Deep River
- Haw River
- Lower New Hope River
- Upper New Hope River

Stream Layers

- Major Rivers
- Other Named Streams

Boundary Layers

- UCF River Basin
- County

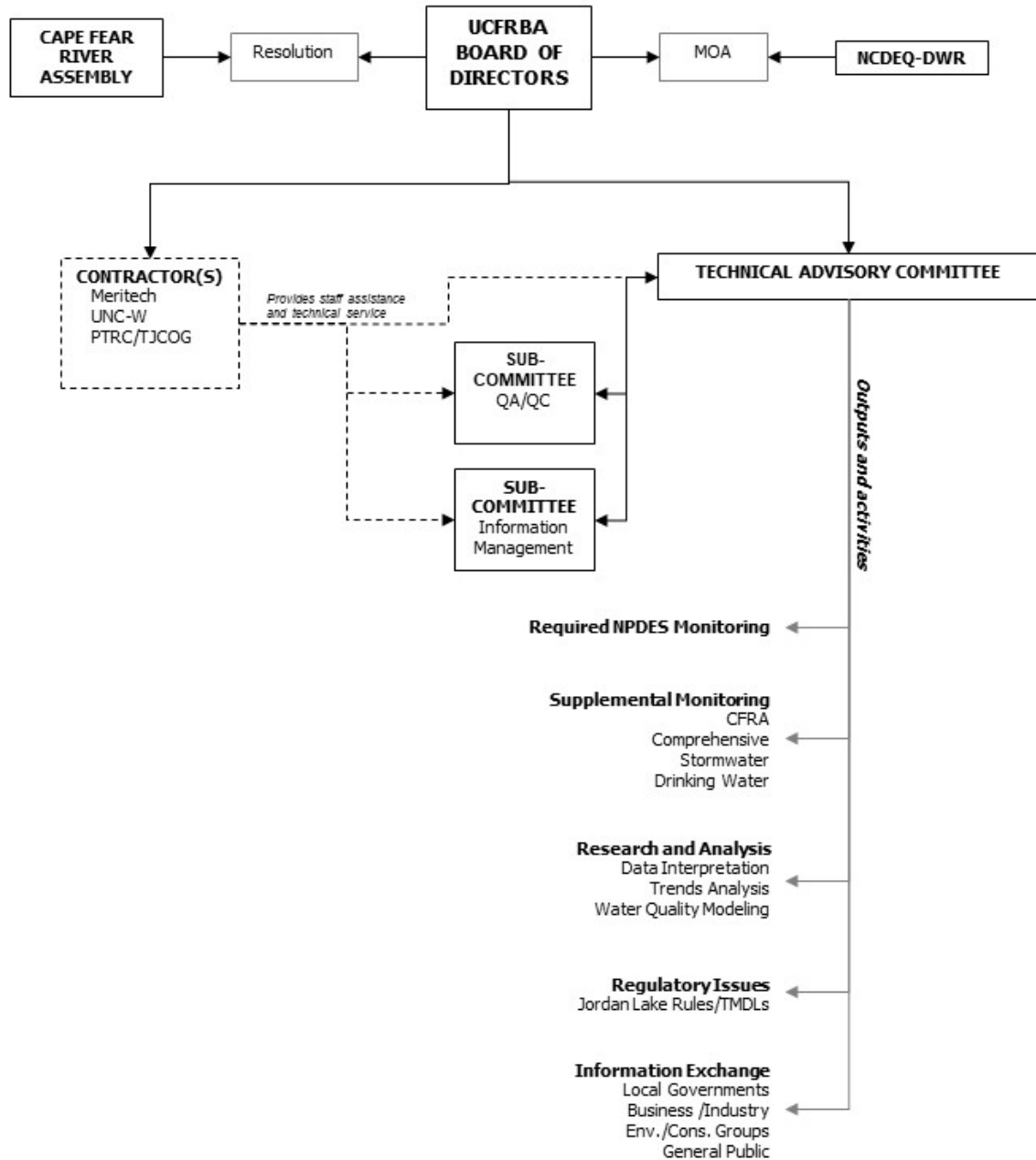


TRIANGLE J COUNCIL OF GOVERNMENTS



PIEDMONT TRIAD REGIONAL COUNCIL

Organizational Structure



Board of Directors

The UCFRBA is governed by a Board of Directors composed of its corporate members. The corporate membership is comprised of 18 local governments and industries using the UCFRB for water supply or treating and discharging wastewater within the UCFRB. The Town of Cary is a special exception, as they have no permit responsibilities within the Basin, but do have an interest in water supply quality and are therefore accorded voting rights with lower dues. Each corporate member has the authority to appoint one Director and one Alternate Director to the Board of Directors.

Listed below are the Board of Directors member organizations, their designated representative, and their NPDES permit numbers. The full board list with addresses and contact information can be found in Appendix A.

| <u>Corporate Members</u> | <u>Discharger</u> | <u>Public Water System</u> | <u>Representative</u> | <u>NPDES Permit Number(s)</u> |
|--------------------------|-------------------|----------------------------|-----------------------|-----------------------------------|
| Arclin | Yes | No | Bowman Harvey | NC0000892 |
| Asheboro | Yes | Yes | Michael Rhoney | NC0026123 |
| Burlington | Yes | Yes | Bob Patterson | NC0023868, NC0023876 |
| Cary | No | Yes | Jeff Adkins | None |
| City of Durham | Yes | Yes | Charlie Cocker | NC0047597 |
| Graham | Yes | Yes | Tonya Mann | NC0021211 |
| Greensboro | Yes | Yes | Martie Groome | NC0024325* , NC0047384 |
| High Point | Yes | Yes | Terry Houk | NC0024210 |
| Mebane | Yes | Yes | Dennis Hodge | NC0021474 |
| OWASA | Yes | Yes | Todd Taylor | NC0025241 |
| Pilgrim's Pride | Yes | No | Tina Pedley | NC0072575, NC0083852 |
| Pittsboro | Yes | Yes | Bryan Gruesbeck | NC0020354 |
| Ramseur | Yes | Yes | Terry Lewallen | NC0026565 |
| Randleman | Yes | Yes | Michael Glass | NC0025445 |
| Reidsville | Yes | Yes | Kevin Eason | NC0024881 |
| Sanford | Yes | Yes | Victor Czar | NC0024147 |
| Siler City | Yes | Yes | Terry Green | NC0026441 |
| Star | Yes | Yes | Wesley Brown | NC0058548 |

*NPDES Permit NC0024325 was rescinded in December 2017 following the closure of the City of Greensboro's North Buffalo WWTP. All wastewater will be pumped and treated at their T.Z. Osborne site from now on.

Officers

The Officers of the Board of Directors consist of a Chair, a Vice Chair, and a Secretary/Treasurer. Officers are elected biannually by the Board of Directors and each officer serves a term of two (2) years. The next election will occur at the 2018 Board of Directors' meeting.

Officers of the Board of Directors

Chairman: *Dennis Hodge, City of Mebane*
Vice-Chairman: *Michael Rhoney, City of Asheboro*

Technical Advisory Committee

The Technical Advisory Committee (TAC) is responsible for providing the Board of Directors with assistance and recommendations concerning the development of proposed annual work programs, specific project plans, and alternative funding sources and strategies. The TAC meets quarterly, usually on the fourth Tuesday of the month from 9:30-11:00 at the Mebane Arts and Community Center. TAC committee members are listed in Appendix B.

Technical Advisory Committee (TAC) Chair: *Dawn Molnar, City of High Point*
TAC Vice-Chair: *Alicia Goots, City of Greensboro*

QA/QC Subcommittee

The Quality Assurance/Quality Control Subcommittee reviews monthly data and ensures the data are accurate and reliable. The following are members of the QA/QC Subcommittee:

| | |
|--------------------------------------|---------------------------|
| <i>Dawn Molnar, QA/QC Chair</i> | <i>City of High Point</i> |
| <i>Elaine Sellars</i> | <i>City of High Point</i> |
| <i>Alicia Goots</i> | <i>City of Greensboro</i> |
| <i>Martie Groome</i> | <i>City of Greensboro</i> |
| <i>Glenn McGirt</i> | <i>City of Burlington</i> |
| <i>Kris Pawlak</i> | <i>Meritech, Inc.</i> |
| <i>Cameron Colvin, Staff Support</i> | <i>PTRC</i> |

Information Management Subcommittee

The Information Management Subcommittee (IMS) determines project and research focus, and reviews the Association's programs. The following are members of the IMS:

| | |
|--|-----------------------------|
| <i>Michelle Woolfolk, IMS Co-Chair</i> | <i>City of Durham</i> |
| <i>Sandra Bradshaw</i> | <i>OWASA</i> |
| <i>Mary Giorgino</i> | <i>US Geological Survey</i> |
| <i>Dennis Hodge</i> | <i>City of Mebane</i> |
| <i>Dr. Janet MacFall</i> | <i>Elon University</i> |
| <i>Jen Schmitz, Staff Support</i> | <i>TJCOG</i> |

Summary of Monitoring Program

The UCFRBA renewed its Memorandum of Agreement (MOA) and contract with NC DWR in May 2015 in order to comply with the federal NPDES program. The MOA applies to the five-year permit cycle of 2015 – 2020, and is available in full upon request or at the TJCOG and PTRC websites. Significant resources were dedicated to negotiation and drafting of a MOA for the 2015 – 2020 period during 2015. The MOA was negotiated so that the UCFRBA currently monitors a network of thirty-nine (39) monitoring stations in the Upper Cape Fear River Basin. One site in Durham County (B3300000) was eliminated from the UCFRBA's monitoring responsibilities on behalf of its members. In addition, the City of Greensboro is in the process of decommissioning its wastewater facilities at North Buffalo Creek (NC0024325), which may affect sites B0480050 and B0540050. The monitoring coalition will be meeting in 2018 to discuss the continuation or closure of these two sites. The UCFRBA will notify NC DWR once a decision has been made in order to negotiate any further amendments to the existing MOA.

Through 2007, metals were collected quarterly using Clean Hands/Dirty Hands methodology (a modified version of EPA Method 1669; see Appendix C). Low-level mercury was analyzed using EPA Method 1631 at 7 sites. In April 2007, NC DWQ released a memo suspending the metals monitoring requirement in the Memorandums of Agreement with the NPDES discharger monitoring coalitions while DWQ re-evaluates new approaches regarding metals data and the use of water quality standards and criteria for metal. A memo from NC DWQ Director Chuck Wakild was issued to the Surface Water Protection Program on April 24, 2012. This letter was relayed to all monitoring coalitions. June 2007 was the last month metals testing – including mercury – conducted by the UCFRBA within the Upper Cape Fear River basin. Please see Appendix D for the 2012 NCDWQ memo regarding the suspension of metals monitoring, and the acknowledgement of the Association's permission to not monitor until this state-level suspension ends. Further developments regarding dissolved metals monitoring and potential responsibilities of the UCFRBA are detailed elsewhere in this report.

The UCFRBA contracts with UNC-Wilmington to maintain an online database of all of its approved water quality data. This database also houses water quality data for the Middle and Lower Cape Fear monitoring coalitions. Data is provided to UNC-W staff annually and is accessible to the public at this website: <http://lcfpr.uncw.edu/riverdatabase/>. All data collected by the UCFRBA under its MOA with NC DWR may be accessed, analyzed, and downloaded from this website. Data may also be requested directly by contacting either of the UCFRBA's administrative staff:

Cameron Colvin
Piedmont Triad Regional Council
Email: ccolvin@ptrc.org
Phone: (336) 904-0300

Jen Schmitz
Triangle J Council of Governments
jschmitz@tjcog.org
(919) 558-9342

Table 1: UCFRBA Water Quality Monitoring Stations

| DWQ Station Number | Location | Station Comments | Latitude (dd.ddddd) | Longitude (dd.ddddd) | County | Stream Class | Stream Index | Sub-Basin | ¹ Field Parameters | Fecal Coliform | Turbidity | TSS | ² Nutrients | ³ Metals |
|-----------------------|---|---|---------------------|----------------------|------------|--------------|----------------|-----------|-------------------------------|----------------|-----------|-----|------------------------|---------------------|
| B0050000 | Haw Riv at US 29 Business nr Benaja | ups Reidsville WWTP | 36.2652 | -79.6523 | ROCKINGHAM | WS-V, NSW | 16-(1) | 03-06-01 | M + 2SM | M | M | M | M | |
| B0070010 | Troublesome Crk at US 29 Bus nr Reidsville | major tributary, nps inputs | 36.2768 | -79.6499 | ROCKINGHAM | WS-V, NSW | 16-6-(3) | 03-06-01 | M | M | M | M | M | |
| B0170000 | Haw Riv at SR 2620/2614 (High Rock Rd) nr Williamsburg | below Reidsville WWTP | 36.2514 | -79.5647 | ROCKINGHAM | C, NSW | 16-(1) | 03-06-01 | M + 2SM | M | M | M | M | |
| B0400000 | Reedy Fork at SR 2719 (High Rock Rd) nr Monticello | model verification | 36.1778 | -79.6177 | GUILFORD | WS-V, NSW | 16-11-(9) | 03-06-02 | M | M | M | M | M | |
| B0480050 | N Buffalo Crk at N Buffalo Crk WWTP Influent Conduit Pier at Greensboro | ups N. Buffalo WWTP | 36.1074 | -79.7502 | GUILFORD | WS-V, NSW | 16-11-14-1 | 03-06-02 | M + 2SM | M | M | M | M | |
| B0540050 ⁴ | N Buffalo Crk at SR 2770 (Huffine Mill Rd) nr McLeansville | dns N. Buffalo WWTP | 36.1299 | -79.6626 | GUILFORD | WS-V, NSW | 16-11-14-1 | 03-06-02 | M + 2SM | M | M | M | M | |
| B0670000 | S Buffalo Crk at SR 3000 (McConnell Rd) nr Greensboro | USGS gage, ups TZ Osborne WWTP | 36.0598 | -79.7256 | GUILFORD | WS-V, NSW | 16-11-14-2 | 03-06-02 | M + 2SM | M | M | M | M | |
| B1020000 | Haw River at SR 1700 (Lower Hopedale Rd.) at Hopedale | ups Burlington East WWTP | 36.1247 | -79.4083 | ALAMANCE | WS-V, NSW | 16-(1) | 03-06-02 | M + 2SM | M | M | M | M | |
| B1200000 | Haw Riv at NC 54 nr Graham | Between Burlington East and Graham | 36.0481 | -79.3667 | ALAMANCE | WS-V, NSW | 16-(1) | 03-06-02 | M + 2SM | M | M | M | M | |
| B1350000 | Moadams Crk at Corrigdor Rd ups of Discharge nr Mebane | ups Mebane WWTP | 36.0885 | -79.2844 | ALAMANCE | WS-V, NSW | 16-18-7 | 03-06-02 | M + 2SM | M | M | M | M | |
| B1380000 | Moadams Crk at SR 1940 (Gibson Rd) nr Florence Town | dns Mebane WWTP | 36.0891 | -79.3074 | ALAMANCE | WS-V, NSW | 16-18-7 | 03-06-02 | M + 2SM | M | M | M | M | |
| B1440000 | Haw Riv at SR 2158 (Sweepsonville Rd) nr Sweepsonville | dns Graham WWTP | 36.0256 | -79.3682 | ALAMANCE | WS-V, NSW | 16-(1) | 03-06-02 | M + 2SM | M | M | M | M | |
| B1940000 | Big Alamance Crk at NC 87 nr Sweepsonville | ups Burlington S. WWTP | 36.0242 | -79.3943 | ALAMANCE | WS-V, NSW | 16-19-(4.5) | 03-06-02 | M + 2SM | M | M | M | M | |
| B2000000 | Haw Riv at SR 1005 nr Saxpawah | Rural area, dns Cane Creek | 35.8953 | -79.2585 | ALAMANCE | C, NSW | 16-(1) | 03-06-04 | M | M | M | M | M | |
| B2100000 | Haw Riv at SR 1713 nr Bynum | USGS Gage, ups Jordan L., DWQ ambient stn | 35.7716 | -79.1449 | CHATHAM | WS-IV, NSW | 16-(28.5) | 03-06-04 | M | M | M | M | M | |
| B3020000 | New Hope Creek at NC 54 nr Durham | ups S. Durham WRF, below waterfowl imp. | 35.9167 | -78.9704 | DURHAM | WS-IV, NSW | 16-41-1-(11.5) | 03-06-05 | M + 2SM | M | M | M | M | |
| B3025000 | Thrd Fork Crk at NC 54 nr Durham | Urban runoff | 35.9187 | -78.9548 | DURHAM | WS-IV, NSW | 16-41-1-12-(2) | 03-06-05 | M | M | M | M | M | |
| B3040000 | New Hope Crk at SR 1107 (Stagecoach Rd) nr Blands | Jordan Lake TMDL, USGS gage | 35.8847 | -78.9656 | DURHAM | WS-IV, NSW | 16-41-1-(11.5) | 03-06-05 | M + 2SM | M | M | M | M | |

| DWQ Station Number | Location | Station Comments | Latitude (dd.dddd) | Longitude (dd.dddd) | County | Stream Class | Stream Index | Sub-Basin | ¹ Field Parameters | Fecal Coliform | Turbidity | TSS | ² Nutrients | ³ Metals |
|--------------------|---|--|--------------------|---------------------|------------|--------------|------------------|-----------|-------------------------------|----------------|-----------|-----|------------------------|---------------------|
| B3300000 | Northeast Crk at SR 1102 (Sedwick Rd) nr RTP | ups Durham Co. RTP WWTP | 35.887 | -78.8994 | DURHAM | WS-IV, NSW | 16-41-1-17-(0.7) | 03-06-05 | M + 2SM | M | M | M | M | |
| B3899180 | Morgan Crk at Mason Farm WWTP Entrance at Chapel Hill | ups OWASA | 35.8987 | -79.0263 | ORANGE | WS-IV, NSW | 16-41-2-(5.5) | 03-06-06 | M + 2SM | M | M | M | M | |
| B3900000 | Morgan Crk at SR 1726 (Old Farrington Rd) nr Farrington | dns OWASA, DWQ ambient stn | 35.8612 | -79.01 | CHATHAM | WS-IV, NSW | 16-41-2-(5.5) | 03-06-06 | M + 2SM | M | M | M | M | |
| B4080000 | Haw Riv at SR 1011 (Old US 1) nr Haywood | dns Jordan Lake and Performance Fibers, ups Arclin (Dynea) | 35.6164 | -79.0569 | CHATHAM | WS-IV | 16-42 | 03-06-04 | M + 2SM | M | M | M | M | |
| B4350000 | Deep Riv at SR 1113 (Kivett Dr) nr Hayworth Spring | ups Richland Creek | 35.9594 | -79.9061 | GUILFORD | WS-IV, CA* | 17-(4) | 03-06-08 | M + 2SM | M | M | M | M | |
| B4380000 | Richland Crk at SR 1154 (Kersey Valley Rd) nr Highpoint | ups High Point Eastside WWTP, Fecal Coliform TMDL | 35.941 | -79.9322 | GUILFORD | WS-IV, CA* | 17-7-(4) | 03-06-08 | M + 2SM | M | M | M | M | |
| B4621000 | Muddy Crk at SR 1917 (Suits Rd) nr Glenola | Fecal Coliform TMDL | 35.89579 | -79.91951 | RANDOLPH | WS-IV* | 17-9-(1) | 03-06-08 | M | M | M | M | M | |
| B4770500 | Deep Riv at Bus 220 (Main St) at Randleman | ups Randleman WWTP, ups Hasketts Creek | 35.8233 | -79.8033 | RANDOLPH | C | 17-(10.5) | 03-06-08 | M + 2SM | M | M | M | M | |
| B4800000 | Deep Riv at SR 2122/2128 (Worthville Rd) at Worthville | dns Randleman WWTP, dns Worthville dam | 35.8021 | -79.7771 | RANDOLPH | C | 17-(10.5) | 03-06-09 | M + 2SM | M | M | M | M | |
| B4870000 | Hasketts Crk at Asheboro WWTP Bridge nr Asheboro | ups Asheboro WWTP | 35.7649 | -79.7864 | RANDOLPH | C | 17-12 | 03-06-09 | M | M | M | M | M | |
| B4920000 | Deep Riv at SR 2261 (Old Liberty Rd) nr Central Falls | dns Asheboro WWTP, below Hasketts Creek | 35.7642 | -79.7734 | RANDOLPH | C | 17-(10.5) | 03-06-09 | M + 2SM | M | M | M | M | |
| B5070000 | Deep Riv at SR 2615 (Brooklyn Ave) at Ramseur | ups Ramseur WWTP, | 35.7302 | -79.6558 | RANDOLPH | C | 17-(10.5) | 03-06-09 | M + 2SM | M | M | M | M | |
| B5100000 | Deep Riv at SR 2628 (Hinshaw Town Rd) nr Paiks Crossroads | dns Ramseur WWTP | 35.6724 | -79.6274 | RANDOLPH | C | 17-(10.5) | 03-06-09 | M + 2SM | M | M | M | M | |
| B5390800 | Cotton Crk at SR 1372 (Auman Rd) nr Star | dns Starr WWTP | 35.3782 | -79.7551 | MONTGOMERY | WS-III | 17-26-5-3 | 03-06-10 | M + 2SM | M | M | M | M | |
| B5685000 | Deep Riv at Deep River Park Bridge nr Cumnock | ups Golden Poultry | 35.5704 | -79.2411 | CHATHAM | C | 17-(38.7) | 03-06-11 | M + 2SM | M | M | M | M | |
| B5820000 | Deep Riv at US 15 and 501 nr Sanford | dns Sanford WWTP | 35.5782 | -79.1942 | LEE | C | 17-(38.7) | 03-06-11 | M + 2SM | M | M | M | M | |
| B5950000 | Rocky Riv at US 64 nr Siler City | dns reservoir, ups Loves Creek | 35.7351 | -79.4233 | CHATHAM | C | 17-(43)-8 | 03-06-12 | M + 2SM | M | M | M | M | |
| B5980000 | Rocky Riv at SR 2170 (Rives Chapel Rd) nr Siler City | dns Loves Creek | 35.6985 | -79.3756 | CHATHAM | C | 17-(43)-8 | 03-06-12 | M + 2SM | M | M | M | M | |
| B6040300 | Deep Riv at SR 1011 (Old US 1) nr Moncre | ups of confluence with Haw River, DWQ ambient stn | 35.6176 | -79.0912 | CHATHAM | WS-IV | 17-(43.5) | 03-06-11 | M | M | M | M | M | |

| DWQ Station Number | Location | Station Comments | Latitude (dd.dddd) | Longitude (dd.dddd) | County | Stream Class | Stream Index | Sub-Basin | ¹ Field Parameters | Fecal Coliform | Turbidity | TSS | ² Nutrients | ³ Metals |
|--------------------|--|----------------------------------|--------------------|---------------------|---------|--------------|--------------|-----------|-------------------------------|----------------|-----------|-----|------------------------|---------------------|
| B5890000 | Loves Crik at Water Treatment Plant Rd at Siler City | Siler City WWTP Sampling Program | 35.7298 | -79.4289 | CHATHAM | C | 17-(43)-10 | 03-06-12 | M + 2SM | M | M | | M | |
| B5920000 | Loves Creek at Progress Blvd at Siler City | Siler City WWTP Sampling Program | 35.7322 | -79.4246 | CHATHAM | C | 17-(43)-10 | 03-06-12 | M + 2SM | M | M | | M | |

¹Field Parameters include Temperature, Dissolved Oxygen, pH, Conductivity

²Nutrients include Ammonia as N, Nitrate/Nitrite as N, Total Kjeldahl Nitrogen as N, and Total Phosphorus as P

³No requirements for metals monitoring are included in this MOA, as the DWQ is currently in the process of reviewing metals water quality assessment techniques, evaluation criteria and relevant standards. However, the DWQ expects to conclude the review within the life cycle of this MOA. At such time, or when the DWQ Director mandates, the UCFRBA is expected to resume monitoring at a level of effort similar to that in the 2005-2010 MOA. Within 60 days of the release of relevant documentation, the UCFRBA will finalize an amendment to the MOA, which includes metals monitoring.

⁴Station will be monitored until the City of Greensboro North Buffalo Creek WWTP is decommissioned. The UCFRBA will notify the Monitoring Coalition Coordinator when this occurs so that the station can be discontinued.

M=Monthly M+2SM=Monthly with Twice Monthly Summer Sampling May, June, July, August, and September. Samples are to be collected at least 10-days apart except when extenuating circumstances arise.

Q=Quarterly March, June, September, and December ups=upstream dns=downstream

Sampling Methods

The following are the sampling methods used by Meritech for UCFRBA analysis:

| | |
|-------------------------|----------------------------------|
| pH----- | SM 4500 HB |
| Temperature----- | SM 2550 B |
| Conductivity----- | EPA 120.1 |
| DO ----- | SM 4500 O G |
| Fecal Coliform----- | SM 9222D |
| TSS----- | SM 2540 D |
| Turbidity ----- | EPA 180.1 |
| Ammonia ----- | EPA 350.1 |
| TKN----- | SM 4500 NH3B |
| NO2/NO3----- | EPA 353.2 |
| Ptot ----- | EPA 200.7 |
| Metals (except Hg)----- | EPA 200.7 (discontinued 08/2007) |
| Mercury----- | EPA 1631 (discontinued 08/2007) |

Certified Laboratories & Quality Assurance/Quality Control Issues

Meritech, Inc., performs Winkler titrations as a mid-point DO check and as a confirmation of unusually high or low DO values. These Winkler titration results were not included in the comment section of the monthly submittals. The Winkler results are useful for confirming DO readings, and per DWQ request are now reported in the comment column.

2017 UCFRBA Issues

The following are topics that occupied significant UCFRBA staff and members' time in 2017. No special studies were conducted for 2017.

Bylaw Update

This year the Upper Cape Fear River Basin Association's Bylaws were updated and amended to clarify the Town of Cary's role as a voting, corporate member, as well as update outdated information. While the Town of Cary has no monitoring requirements within the Upper Cape Fear, they do have a vested interest in water quality, since Jordan Lake is the source of their drinking water supply.

Hardness Monitoring

Recent NPDES permit renewals have triggered additional monitoring requirements of hardness for some of the UCFRBA's members. The UCFRBA hosted members from the Division of Water Resources' Permitting Division who shared information on hardness requirements and other program updates. The UCFRBA's Board has decided that hardness sampling requirements will be the responsibility of individual members, rather than a shared responsibility of the monitoring coalition.

Emerging Contaminants

The Cape Fear River has been the subject of several headlines this year concerning the high concentrations of GenX found around the Chemours factory in Fayetteville, NC. While this has primarily effected the lower basin, the Upper Cape Fear River Basin Association has been engaged in several presentations and discussions about GenX, as well as other emerging contaminants, such as 1-4 dioxane, that are not currently regulated and may present issues within the coming years.

DWR Nutrient and Dissolved Oxygen Model

The DWR Modeling and Assessment Branch is in the process of developing a watershed model for the middle Cape Fear River Basin in order to better inform nutrient permitting throughout the Cape Fear River Basin. The branch has requested the assistance of the Upper and Middle Cape Fear monitoring coalitions to increase water quality monitoring at certain sampling locations for a two-year period of time. This data would help increase the accuracy of the model and better inform water management decisions. The primary parameters of concern are nitrogen, phosphorus, chlorophyll-a, dissolved oxygen, turbidity, algal blooms, and total organic carbon. Board members of the Upper Cape Fear River Basin Association will be meeting with DWR's Modeling and Assessment Branch in May 2018 to learn more about the proposed monitoring schedule and discuss funding options.

NC DWR/Meritech Field Visit

Recent staff changes in both the Division of Water Resources and UCFRBA administrative staff resulted in a lapse in field audits in 2017. However, a field audit has been scheduled with Meritech Labs for April 2018. All data collection procedures in previous years have been within compliance of the MOA (see Appendix G). There have been no changes in water quality sampling methods since this time.

APPENDIX A: UCFRBA Board of Directors

UPPER CAPE FEAR RIVER BASIN ASSOCIATION

DIRECTORS AND ALTERNATE DIRECTORS

(Points of Contact)

Arclin

| | |
|---|---|
| Bowman Harvey HSE Coordinator 790 Corinth Road Moncure, NC 27759 Phone: 919-545-5753 Email: bowman.harvey@arclin.com | Brad Crawford 790 Corinth Road Moncure, NC 27759 Phone: Email: brad.crawford@arclin.com |
|---|---|

City of Asheboro

| | |
|--|---|
| Michael Rhoney Water Resources Director PO Box 1106 Asheboro, NC 27204-1106 Phone: 336-626-1201 x258 Fax: 336-626-0430 Email: mrhoney@ci.asheboro.nc.us | John Ogburn II City Manager PO Box 1106 Asheboro, NC 27204-1106 Phone: 336-626-1201, ext. 213 Fax: 336-626-1218 Email: jogburn@ci.asheboro.nc.us |
|--|---|

City of Burlington

| | |
|---|---|
| Bob Patterson Director of Utilities PO Box 1358 Burlington, NC 27216-1358 Phone: 336-222-5130 Fax: 336-222-5019 Email: bpatterson@ci.burlington.nc.us | Eric Davis Water & Sewer Operations Manager PO Box 1358 Burlington, NC 27216-1358 Phone: 336-222-5133 Fax: 336-570-6175 Email: edavis@ci.burlington.nc.us |
|---|---|

Town of Cary

| | |
|--|--|
| Jeff Adkins Water Resources Manager PO Box 8005 Cary, NC 27512-8005 Phone: 919-462-2066 Email: jeff.adkins@townofcary.org | Sarah Braman Water Resources Engineer PO Box 8005 Cary, NC 27512-8005 Phone: 919-462-3846 Email: sarah.braman@townofcary.org |
|--|--|

City of Durham

| | |
|--|---|
| Charlie Cocker Plant Superintendent 6605 Farrington Road Chapel Hill, NC 27517 Phone: 919-560-4386, ext.35532 Fax: Email: charles.cocker@durhamnc.gov | Vicki Westbrook Deputy Director of Water Management 101 City Hall Plaza Durham, NC 27701-3328 Phone: 919-560-4381 Fax: 919-560-4479 Email: vicki.westbrook@durhamnc.gov |
|--|---|

City of Graham

| | |
|--|---|
| Tonya Mann Utilities Director PO Drawer 357 Graham, NC 27253 Phone: 336-570-6721 Fax: 336-513-5502 Email: tmann@cityofgraham.com | Cris Routh WWTP Supervisor PO Drawer 357 Graham, NC 27253 Phone: 336-570-6721 Fax: 336-513-5502 Email: crouth@cityofgraham.com |
|--|---|

City of Greensboro

| | |
|--|--|
| Martie Groome Laboratory and Ind. Waste Section Supervisor PO Box 3136 Greensboro, NC 27402-3136 Phone: 336-433-7229 Fax: 336-373-7720 Email: martie.groome@greensboro-nc.gov | Elijah Williams Waste Reclamation Manager PO Box 3136 Greensboro, NC 27402-3136 Phone: 336-373-4632 Fax: Email: elijah.williams@greensboro-nc.gov |
|--|--|

City of High Point

| | |
|---|--|
| Terry Houk Director of Public Services PO Box 230 High Point, NC 27261 Phone: 336-883-3218 Email: terry.houk@highpointnc.gov | Derrick Boone Assistant Director of Public Services PO Box 230 High Point, NC 27261 Phone: 336-883-3166 Email: derrick.boone@highpointnc.gov |
|---|--|

City of Mebane

| | |
|---|--|
| Dennis J. Hodge Wastewater Director 106 E. Washington Street Mebane, NC 27302 Phone: 919-304-9215 Fax: 919-563-1007 Email: dhodge@cityofmebane.com | David Cheek City Manager 106 E. Washington Street Mebane, NC 27302 Phone: 919-563-5901 Fax: 919-563-1007 Email: rwilson@cityofmebane.com |
|---|--|

Orange Water and Sewer Authority

| | |
|--|--|
| Sandra Bradshaw WWTP Lab Supervisor 400 Jones Ferry Road Carrboro, NC 27510 Phone: 919-304-9215 Fax: Email: sbradshaw@owasa.org | Todd Taylor General Manager of Operations 400 Jones Ferry Road Carrboro, NC 27510 Phone: 919-537-4281 Fax: Email: ttaylor@owasa.org |
|--|--|

Pilgrim's Pride

| | |
|---|---|
| Tina Pedley Wastewater Lab Tech 7401 Statesville Blvd Salisbury, NC 28147 Phone: 919-210-3527 Fax: 919-542-6324 Email: tina.pedley@pilgrims.com | VACANT 484 Zimmerman Road Sanford, NC 27330 Phone: Fax: Email: |
|---|---|

Town of Pittsboro

| | |
|---|---|
| Bryan Gruesbeck Town Manager PO Box 759 635 East Street Pittsboro, NC 27312 Phone: 919-542-4621, ext. 22 Fax: 919-542-7109 Email: bgruesbeck@pittsboronc.gov | Cindy Perry Mayor PO Box 759 635 East Street Pittsboro, NC 27312 Phone: 919-542-4621 Fax: 919-542-7109 Email: cperry@pittsboronc.gov |
|---|---|

Town of Ramseur

| | |
|---|---|
| Terry Lewallen WWTP Superintendent PO Box 545 Ramseur, NC 27316 Phone: 336-824-8530 Fax: 336-824-6624 Email: terry.lewallen@suez.com | Danny Shaw Mayor PO 545 Ramseur, NC 27316 Phone: 336-824-8883 Fax: 336-824-6624 Email: shawdr1@hotmail.com |
|---|---|

City of Randleman

| | |
|---|---|
| Michael Glass WWTP Superintendent 204 South Main Street Randleman, NC 27317 Phone: 336-498-2254 | VACANT City Manager 204 South Main Street Randleman, NC 27317 Phone: 336-495-7500 |
|---|---|

| | |
|--|-----------------------------|
| Fax: 336-498-7503 Email: wwtp@northstate.net | Fax: 336-495-7503 Email: |
|--|-----------------------------|

City of Reidsville

| | |
|--|---|
| Kevin Eason Public Works Director 1100 Vance Street Reidsville, NC 27320 Phone: 336-349-1042 Fax: 336-634-1738 Email: keason@ci.reidsville.nc.us | Preston Mitchell City Manager 230 W. Morehead Street Reidsville, NC 27320 Phone: 336-349-1030 Fax: 336-342-3649 Email: pmitchell@ci.reidsville.nc.us |
|--|---|

City of Sanford

| | |
|--|--|
| Victor Czar Public Works Director Sanford Municipal Building 225 E. Weatherspoon St Sanford, NC 27330 Phone: 919-775-8231 Fax: 919-774-8179 Email: victor.czar@sanfordnc.net | Scott Siletzky WWTP Superintendent PO Box 3729 225 E. Weatherspoon St Sanford, NC 27330 Phone: 919-775-8305 Fax: 919-776-5037 Email: scott.siletzky@sanfordnc.net |
|--|--|

Town of Siler City

| | |
|---|--|
| Terry Green Director of Public Works and Utilities PO Box 769 Siler City, NC 27344-0769 Phone: 919-742-4732 Fax: 919-663-3874 Email: tgreen@silercity.org | Bryan Thompson Town Manager PO Box 769 Siler City, NC 27344-0769 Phone: 919-742-4731 Fax: 919-663-3874 Email: bthompson@silercity.org |
|---|--|

Town of Star

| | |
|---|---|
| Wesley Brown Sewage Treatment Plant Superintendent PO Box 97 Star, NC 27356 Phone: 910-428-4623 Fax: 910-428-1170 Email: townofstar@gmail.com | Mary O'Brien Mayor PO Box 97 Star, NC 27356 Phone: 910-428-4623 Fax: 910-428-1170 Email: townofstar@gmail.com |
|---|---|

APPENDIX B: UCFRBA Technical Advisory Committee

| NAME | AGENCY | TITLE | EMAIL |
|--------------------|-----------------------------------|---|--|
| Alicia Goots | Greensboro | Lab Coordinator | alicia.goots@greensboro-nc.gov |
| Andrea Eilers | Triangle J Council of Governments | Water Resources Program Manager | aeilers@tjcog.org |
| Anna Leonard | Piedmont Triad Regional Council | Environmental Programs Coordinator | aleonard@ptrc.org |
| Anne Hershey | UNC-Greensboro: Dept. Biology | Distinguished Professor | anne_hershey@uncg.edu |
| Ben Bani | Reidsville | WWTP ORC | bbani@ci.reidsville.nc.us |
| Bernadine Wardlaw | Asheboro | Water Quality Manager | bwardlaw@ci.asheboro.nc.us |
| Bill Frazier | High Point | Lab Services Manager | bill.frazier@highpointnc.gov |
| Bob Patterson | Burlington | Water Resources Director | bpatterson@ci.burlington.nc.us |
| Bowman Harvey | Arclin | HSE Coordinator | bowman.harvey@arclin.com |
| Brian Pointer | DWR – Ecosystems Unit | Monitoring Coalition Coordinator | brian.pointer@ncdenr.gov |
| Bryan Gruesbeck | Pittsboro | Town Manager | bgruesbeck@pittsboronc.gov |
| Bryan Thompson | Siler City | Town Manager | bthompson@silercity.org |
| Cameron Colvin | Piedmont Triad Regional Council | Water Resources Planner | ccolvin@ptrc.org |
| Charles Cocker | Durham | Superintendent South Durham WRF | charles.cocker@durhamnc.gov |
| Chris McCorquodale | Siler City | Wastewater Treatment Plant Superintendent | scwastewater@silercity.org |
| Cindy Perry | Pittsboro | Mayor | cperry@pittsboronc.gov |
| Cris Routh | Graham | ORC & Wastewater Treatment Plant Supervisor | crouth@cityofgraham.com |
| Danny Shaw | Ramseur | Mayor | shawdr1@hotmail.com |
| Davi Phelgar | Greensboro | Monitoring Coordinator – Stormwater | david.phlegar@greensboro-nc.gov |
| David Cheek | Mebane | City Manager | dcheek@cityofmebane.com |
| David Merritt | Meritech, Inc. | Vice President | david.merritt@meritechlabs.com |
| Dawn Molnar | High Point | Laboratory Supervisor | dawn.molnar@highpointnc.gov |
| Dennis Hodge | Mebane | Wastewater Director | dhodge@cityofmebane.com |
| Derrick Boone | High Point | Assistant Public Services Director | derrick.boone@highpointnc.gov |
| Ed Kerwin | Orange Water and Sewer Authority | Executive Director | ekerwin@owasa.org |
| Elaine Chiosso | Haw River Assembly | Executive Director | hra@emji.net |

| | | | |
|-------------------|--|--|--|
| Elaine Sellars | High Point | | elaine.sellars@highpointnc.gov |
| Elijah Williams | Greensboro | Waste Reclamation Manager | elijah.williams@greensboro-nc.gov |
| Eric Davis | Burlington | Water and Sewer Operations Manager | edavis@ci.burlington.nc.us |
| Fred Royal | Pittsboro | Town Engineer | froyal@pittsboronc.gov |
| Glenn McGirt | Burlington | Laboratory Supervisor | gmcgirt@ci.burlington.nc.us |
| Godfrey Uzochukwu | NC A&T | Director Management Institute | uzo@ncat.edu |
| Janet MacFall | Elon University | Professor of Environmental Studies and Biology | macfallj@elon.edu |
| Jeff Adkins | Cary | Water Resources Manager | jeff.adkins@townofcary.org |
| Jen Schmitz | Triangle J Council of Governments | Principal Planner | jschmitz@tjog.org |
| John Kent | New Hope Audubon Society | | newhopeaudubon@gmail.com |
| John Kiviniemi | Orange Water and Sewer Authority | Wastewater Treatment & Biosolids Recycling Manager | jkiviniemi@owasa.org |
| John Ogburn II | Asheboro | City Manager | jogburn@ci.asheboro.nc.us |
| John Poteat | Pittsboro | Utility Director | jpoteat2@nc.rr.com |
| Kevin Eason | Reidsville | Public Works Director | keason@ci.reidsville.nc.us |
| Kevin Wood | High Point | Wastewater Plants Manager | kevin.wood@highpointnc.gov |
| Kris Pawlak | Meritech, Inc. | Lab Manager | kris.pawlak@meritechlabs.com |
| Larry Bridges | Chatham County | Utilities Director | larry.bridges@chathamnc.org |
| Linda Ehrlick | Spirogyra Diversified Environmental Services | Owner | spirogyra@juno.com |
| Mark Vander Borgh | DEQ DWR | Senior Environmental Biologist | mark.vanderborgh@ncdenr.gov |
| Martie Groome | Greensboro | Lab/Industrial Waste Supervisor | Martie.Groome@greensboro-nc.gov |
| Mary Giorgino | USGS | Water Quality Specialist | giorgino@usgs.gov |
| Mary O'Brien | Star | Mayor | townofstar@gmail.com |
| Michael Glass | Randleman | WWTP Superintendent | mglass816@gmail.com |
| Michael Layne | Burlington | Stormwater Manager | mlayne@ci.burlington.nc.us |
| Michael Rhoney | Asheboro | Director | mrhoney@ci.asheboro.nc.us |
| Michelle Woolfolk | Durham | Water Resources Engineer | michelle.woolfolk@durhamnc.gov |
| Nick Holcomb | Randleman | City Manager | nholcomb@cityofrandleman.com |
| Parke Rublee | UNC-Greensboro: Dept. Biology | Professor | rublee@uncg.edu |
| Patrick Beggs | DEQ DWR | Nonpoint Source Planning | patrick.beggs@ncdenr.gov |
| Peter Raabe | American Rivers | Conservation Director | praabe@americanrivers.org |

| | | | |
|------------------|---|---|--|
| Preston Mitchell | Reidsville | City Manager | pmitchell@ci.reidsville.nc.us |
| Rich Gannon | DWR – Nonpoint Source Unit | Branch Chief | rich.gannon@ncdenr.gov |
| Ruth Rouse | Orange Water and Sewer Authority | Planning and Development Manager | RRouse@owasa.org |
| Ryan Rasmussen | USGS | Triangle Area Water Supply Monitoring | rbrasmus@usgs.gov |
| Sandra Bradshaw | Orange Water and Sewer Authority | Laboratory Manager | sbradshaw@owasa.org |
| Sarah Braman | Cary | Water Resources Engineer | sarah.braman@townofcary.org |
| Scott Siletzky | Sanford | Wastewater Treatment Plant Superintendent | scott.siletzky@sanfordnc.net |
| Shelby Smith | Graham | Pretreatment Program | ssmith@cityofgraham.com |
| Stephanie Smith | Morrisville | | ssmith@townofmorrisville.org |
| Steve Tedder | Tedder Farm Consulting | | tedderfarmconsulting@gmail.com |
| Steve Whalen | UNC-CH:Dept. Environ. Science & Eng. | Associate Professor | steve_whelen@unc.edu |
| Steven Drew | Greensboro | Water Resources Director | steve.drew@greensboro-nc.gov |
| Stormwater | Durham | Engineer, Stormwater Quality | stormwaterquality@durhamnc.gov |
| Terry Green | Siler City | Director of Public Works | tgreen@silercity.org |
| Terry Houk | High Point | | Terry.houk@highpointnc.gov |
| Tina Pedley | Pilgrim’s Pride | Wastewater Lab Tech | Tina.Pedley@pilgrims.com |
| Todd Taylor | Orange Water and Sewer Authority | General Manager of Operations | ttaylor@owasa.org |
| Tom Duckwall | Friends of the Deep River/Blue Ridge Environmental Defense League | Coordinator | tomfduckwall@cs.com |
| Tom Hoban | Cape Fear River Assembly | Executive Director | drtomhoban@gmail.com |
| Tonya Mann | Graham | Utilities Director | tmann@cityofgraham.com |
| Vicki Westbrook | Durham | Deputy Director of Water Management | vicki.westbrook@durhamnc.gov |
| Victor Czar | Sanford | Public Works Director | victor.czar@sanfordnc.net |
| Wesley Brown | Star | Sewage Treatment Plant Superintendent | townofstar@gmail.com |

APPENDIX C: UCFRBA Sampling Procedures

1669 Sampling Procedures

A. Supplies

1. Cooler (Hg Only) – Contains the following
 - a. Gloves (2x): Large bag with one pair, inside of which is a small bag with two pairs. Lone pair is a backup set.
 - b. Sample Bottles (2x): Large bag with bottle lot #, sampling site and date, inside of which is a small bag, also contains same information. The sampling bottle is in the small bag.
 - c. Sampling Tubing (1x): Double bagged with the lot # written on the bag. Single use tubing.
 - d. Backup Cooler: Items a. through d. will be kept in a separate cooler which will be used as a spare in the event that a problem is encountered with the original kit. Should this kit not be used; it may be used for a subsequent sampling event at the same site.
2. Sampling Supplies – Contains the following
 - a. DI Carboy – Wrapped in plastic bag sealed with rubber band.
 - b. Peristaltic pump (portable) – Battery operated pump for sampling.
 - c. Waste Carboy – Collects waste during the sampling process
 - d. Polypropylene Support and Clamp – Used to position the sample tubing for hands free operation.
 - e. Sampling Wand – PVC pipe 1" diameter x 10' with T glued to end for better handling. Pipe is notched to accept sample tubing.
 - f. Plastic Sheeting – Single use to cover the sampling table. Clamped to the bottom of table.
 - g. Garbage Bag – Standard white kitchen garbage bag to collect refuse from sampling event
 - h. Sampling Table – 2' x 4' used to setup sampling supplies.
 - i. COC (Chain of Custody) – Records sampling information i.e. Client, Date/Time, Lot #'s, Sampling Team, Sampling Conditions, etc.
 - j. Two Person Sampling Team (CH/DH) – Clean Hands and Dirty Hands Sampling Team; predetermined to help expedite sampling process.

B. Initial Arrival Set-up.

1. Do not park in close proximity to the sampling site, and whenever possible approach site from downwind.
2. Note sampling site conditions with regards to wind and wind direction; also noting potential sources of contamination from the surrounding area.
3. Setup table close to the sampling site according to the orientation required for sampling the effluent
 - a. Clamp down a fresh sheet of plastic on the sampling table.
 - b. Put on set of gloves – non-bagged.
 - c. Place the DI Water Carboy, Peristaltic Pump, and Tubing Support Stand on the table.
 - d. Open the access area to the pump head so that the tubing may be quickly connected to the pump when the samplers are ready.
 - e. Place sampling wand on table
 - f. Place waste carboy on ground in proximity to the sampling tables.
 - g. Tie the garbage bag to the sampling table
 - h. Fill out paper work including the sampling conditions and lot #'s of sampling equipment and preservatives.
4. Make final check that the sampling area is accessible and logistically feasible from the table set-up area.
5. Remove any impedence from the sampling area.

C. Sampling – Clean Hands(CH)/Dirty Hands(DH).

1. Assign clean hands and dirty hands technicians.
2. Both CH and DH will now wait ten minutes for the sampling site to equilibrate from any destabilization resulting from the initial set-up.

D. Sampling Wand Collection

1. Field Blank
 - a. DH will open the cooler containing the sampling accessories (gloves, tubing, and bottles).
 - b. DH opens glove bag for CH to put on two sets of gloves.
 - c. DH opens 2nd glove bag and puts on two sets of gloves.
 - d. DH opens the bag for the DI carboy.
 - e. DH removes the bag containing the sampling tubing, and opens the bag.
 - f. CH removes the inner bag containing the tubing, and removes the tubing, but does not allow the ends to come in contact with anything. The ends of the tubing are facing down to avoid contamination.
 - g. DH installs the tubing while CH maintains the tubing ends facing down.
 - h. DH removes the cap from the carboy.
 - i. CH places one end of the tubing into the carboy so that it remains in the carboy, and the other end is placed into the clamp on the support stand.
 - j. DH positions the waste carboy under the exit tubing and starts the pump. Rinse tubing with 1L of DI water. DH stops the pump.
 - k. DH removes the waste carboy
 - l. DH removes the double bagged sample bottle (Field Blank) from the cooler and opens the outer bag. CH removes the bagged bottle, and removes the cap. All baggies should remain in the sampling cooler until the sample bottle is returned.
 - m. CH position the bottle under the exit tubing.
 - n. DH starts the pump; CH signals to turn off the pump once the bottle is full.
 - o. CH replaces the cap, and puts the bottle back to the small bag.
 - p. DH opens large bag and CH places bagged bottle into large bag.
 - q. DH seals the baggie and puts the sample back into the cooler.
2. Sample – Sampling Wand
 - a. DH removes the double bagged sample bottle (Sample) from the cooler and CH removes the single bagged bottle from the large bag placing it on the sampling table.
 - b. DH positions the waste carboy with the sampling tubing in the support stand.
 - c. DH secures the sampling wand across the sampling table, while CH removes the sampling tubing from the DI carboy.
 - d. CH positions the sampling tubing in the sampling wand while DH holds the wand firm.
 - e. DH starts the pump while holding the wand against the table.
 - f. DH places the sampling wand in the sampling area positioning the end of the wand downstream from the tip of the sampling tubing.
 - g. Once approximately 1L of sample is passed through the tubing (2 – 5 minutes) and collected in the waste carboy, CH removes the sample bottle from the small bag, removes the cap, and fills the bottle by placing the bottle above the waste carboy.
 - h. Once full, CH replaces the cap, and places the bottle back into the baggie.
 - i. DH removes the wand from the sampling area and turns off the pump.
 - j. DH puts down the sampling wand on the table, and opens the large baggie for CH to place the sample bottle into.
 - k. DH seals the large baggie and places the sample into the sample cooler.
 - l. DH and CH may now freely cleanup the sampling area disposing of the sampling tubing and gloves into a garbage bag attached to the sampling table.
 - m. CH will finish paper work noting times that the samples were taken and any potential problems with the sampling.

E. Sample – Direct Collection

1. Field Blank
 - a. DH will open the cooler containing the sampling accessories (gloves, and bottles).
 - b. DH opens glove bag for CH to put on two sets of gloves.
 - c. DH opens 2nd glove bag and puts on two sets of gloves.
 - d. DH gets double bagged field blank bottle from cooler, opens outer bag and CH removes inner bag setting it on the sampling table.
 - e. DH gets double bagged sample bottle, which is full of DI water from the lab, and opens the outer bag.
 - f. CH removes the inner bag and removes the bottle and takes off the cap.
 - g. CH then removes the field blank bottle from the inner baggie and transfers the DI water from the sample bottle to the field blank bottle.
 - h. CH caps the field blank bottle places it back into the baggie, which is placed back into the outer baggie being held open by DH.
 - i. DH then seals the baggie and places the bottle into the cooler.
2. Sample
 - a. CH takes the emptied sample bottle and fills it it with the waste stream from the sampling site.
 - b. CH replaces the cap and places the bottle back in the inner baggie.
 - c. DH opens the outer baggie and CH places the bagged sample into the outer baggie.
 - d. DH seals the outer baggie and places the bottle into the cooler.
 - e. CH and DH can now clean the sampling site and complete all necessary paperwork prior to leaving the site.

APPENDIX D: NC DWR 2012 Metals Monitoring Suspension Letter



North Carolina Department of Environment and Natural Resources
Division of Water Quality

Beverly Eaves Perdue
Governor

Charles Wakild, P. E.
Director

Dee Freeman
Secretary

April 24, 2012

MEMORANDUM

To: Regional Surface Water Protection Supervisors
Jay Sauber
Kent Wiggins

From: Chuck Wakild 

Subject: Routine Ambient Data Collection for Total Metals

On April 3, 2007, DWQ suspended routine collection and analysis of total recoverable metals in all ambient monitoring programs because metals monitoring practices and water quality standards were under review. Since that time, the suspension has been continued by the Division at the Director's discretion.

DWQ has made significant progress in the past few years evaluating assessment techniques, evaluation criteria and relevant water quality standards. The Division has received copious amounts of information and input on potential costs and benefits of proposed metals criteria from a variety of interested parties and is currently using that input to develop a Fiscal Note for certification by the Environmental Management Commission (EMC) and approval by the Office of State Budget Management (OSBM). It is the Division's goal to have the Fiscal Note completed for review by the EMC in the fall of 2012.

Pending EMC approval, the proposed rules, fiscal note and announcement of Public Hearing dates/public comment period will be noticed in the North Carolina Register. At that time, interested parties will again have a chance to provide input for final consideration of the rules. Upon final approval by the EMC and OSBM, the rules will be submitted to the Rules Review Commission. Pending completion of all state requirements, DWQ will submit the water quality standards revisions to the US EPA and request federal approval of the revised water quality standards.

The suspension of routine ambient data collection for total metals will continue for the Discharge Monitoring Coalitions. It is recommended that the Monitoring Coalitions take this time to evaluate how the proposed water quality standards will impact their sampling programs and continue to retain their financial resources in anticipation of future monitoring efforts. DWQ ambient metals sampling will continue as it has been performed for the past two years.

Questions regarding sampling or special studies should be directed to Jay Sauber (jay.sauber@ncdenr.gov; 919-743-8416). Questions on water quality standards for metals should be directed to Connie Brower (connie.brower@ncdenr.gov; 919-807-6416).

1617 Mail Service Center, Raleigh, North Carolina 27699-1617
Location: 512 N. Salisbury St. Raleigh, North Carolina 27604
Phone: 919-807-6300 | FAX: 919-807-6492
Internet: www.ncwaterquality.org

An Equal Opportunity \ Affirmative Action Employer

One
North Carolina
Naturally

APPENDIX E: UCFRBA Dissolved Metals Special Study Letter to NC DWR

UPPER CAPE FEAR RIVER BASIN ASSOCIATION, INC.
1398 Carrollton Crossing Drive
KERNERSVILLE, NC 27284



October 6, 2015

Mr. Steven Kroeger
NC Division of Water Resources
4401 Reedy Creek Road
Raleigh, NC 27607

Mr. Kroeger,

Since 2007, the State of North Carolina Department of Environment and Natural Resources (now the Department of Environmental Quality (DEQ)) has been engaged in a conversation with the US Environmental Protection Agency (US EPA) about how to best measure and regulate the presence of metals from artificial sources in the State's freshwaters. In 2015, these conversations have appeared to be approaching some resolution, indicating that all holders of National Pollution Discharge Elimination System (NPDES) permits will need to be aware of the concentration(s) of dissolved metals in their receiving streams, as well as accounting for their respective contributions to the concentration(s). This includes all monitoring coalitions in the State, which are permitted, via Memoranda of Agreement with the NC DEQ, to perform the monitoring and reporting requirements of multiple NPDES permittees as one group with a single administrative body.

In order to best account for its contributions to receiving waters, as well as to perform its monitoring and analysis responsibilities as effectively as possible, the Upper Cape Fear River Basin (UCFRBA) conducted a four-month pilot study on seven (7) metals at six (6) locations in the Upper Cape Fear River Basin. The metals were filtered using three different methodologies: one in-field filtration and two laboratory filtrations with different holding times. The details of the monitoring study are provided in Attachment A, which is a copy of the monitoring services contract between the UCFRBA and Meritech, Inc.

The four-month study yielded interesting results, some of which were unexpected by the UCFRBA Technical Advisory Committee and the Meritech, Inc., laboratory staff. Meritech, Inc., included barium and manganese in the project as positive controls that were expected to show recordable levels at all monitoring locations. The three sampling methodologies used in the pilot study, which includes the recommended method by NC DEQ and USEPA, yielded few detectable metals results. There were not high background levels of any of the metals sampled except for zinc, which is present in the filters and must be pre-washed to get representative results. All data is provided for NC DEQ to assess internally.

Lastly, the methodologies used had surprising results for the UCFRBA. Meritech, Inc., now recommends using in-field filtration, as it is simpler than originally thought and laboratory filtration was more labor- and time-intensive than originally thought. However, Meritech, Inc., found that much more deionized water was needed than originally estimated – about one gallon per site. This is necessary to prewash filters and is especially valuable in cleaning zinc from the filters. The study used a Clean Hands Dirty Hands sampling methodology, as detailed by the USEPA, but NC DEQ has stated publicly that a one-person sampling protocol should be sufficient for dissolved metals sampling in the future, which would conserve costs. Meritech, Inc., Laboratory Manager Kris Pawlak estimates that, with the savings in time and labor, there is no significant difference in the costs of filtration of dissolved metals in the field versus either laboratory filtration method.

The UCFRBA is satisfied that the data collected will permit us to progress with dissolved metals monitoring in a cost-effective manner that will protect North Carolina's waters and mitigate and resolve issues identified in current and past Total Maximum Daily Load assessments for our residents waters. We are pleased to share this data with

NC DEQ, in the hopes that it may be able to apply this data toward similar ends. We all share the goal of protecting the State's waters for current and future populations, and look forward to working closely with NC DEQ and our colleagues throughout North Carolina toward this goal.

Please do not hesitate to contact the UCFRBA with any questions or concerns regarding this study. We are also happy to discuss any matters relating to our NPDES permits and our MOA with NC DEQ.

Thank you for your interest and time in this matter.

Sincerely,

Charles Cocker, Chairman

CC: Sydney Miller, Technical Advisory Committee Chair
Scott Pickard, Quality Assurance/Quality Control Chair
Kris Pawlak, Meritech, Inc., Laboratory Manager
Cy Stober, UCFRBA administrative staff

APPENDIX F: UCFRBA Monitoring Services Contract

UPPER CAPE FEAR RIVER BASIN ASSOCIATION MONITORING SERVICES

BETWEEN UPPER CAPE FEAR RIVER BASIN ASSOCIATION, INC.
AND MERITECH, INC

This CONTRACT effective September 1, 2017 between the UPPER CAPE FEAR RIVER BASIN ASSOCIATION, INC., hereinafter called the ASSOCIATION, and MERITECH, INC., hereinafter called the CONTRACTOR.

WITNESSETH:

WHEREAS, on June 26, 2017 the Board of Directors of the Upper Cape Fear River Basin Association, Inc. authorized a new two-year monitoring services contract between the UPPER CAPE RIVER BASIN ASSOCIATION, INC and MERITECH, INC., such contract pending review and acceptance by the Board; and

WHEREAS, this CONTRACT is consistent with the Memorandum of Agreement (MOA) (EXHIBIT 1) between the Division of Water Resources, North Carolina Department of Environment and Natural Resources (NCDENR) and the ASSOCIATION for collection, analysis and reporting of water quality data for the period of May 1, 2015 to April 30, 2020; and

WHEREAS, CONTRACTOR attests that it is a fully certified laboratory approved by the Division of Water Resources, North Carolina Department of Environment and Natural Resources and that it shall maintain continuous laboratory certification with DWQ in accordance with 15 NCAC 2H.0800 for all contaminants and parameters required for data collection by the MOA; and

WHEREAS, the ASSOCIATION requires supplemental information related to sampling and analytical services to improve quality assurance and quality control in the testing and analysis process, such supplemental information detailed in EXHIBIT 2 of this CONTRACT;

NOW, THEREFORE, in consideration of the premises and the mutual covenants contained herein, the parties do hereby contract and agree as follows:

SECTION I. SCOPE OF WORK

The CONTRACTOR does hereby covenant and agree with the ASSOCIATION that the CONTRACTOR will well and faithfully perform and execute such work and furnish such labor, materials, equipment, apparatus and supplies, in accordance with each and every one of the conditions, covenants, stipulations, terms and provisions contained in this CONTRACT and as generally described below, and will well and faithfully comply with and perform each and every obligation imposed upon the CONTRACTOR under this CONTRACT.

The CONTRACTOR shall promptly make payments to all persons supplying materials in the prosecution of the work, and to all laborers and others employed thereon.

A. Type of Work

The work to be done and fully performed by the CONTRACTOR pursuant to this CONTRACT shall consist of the following:

1. Base Monitoring Services: Base Monitoring Services shall be those specified in the requirements of the MOA between the ASSOCIATION and the NCDWR, dated May 1 2015, in EXHIBIT 1. Additional quality assurance/quality control (hereafter QA/QC) requirements are specified in EXHIBIT 2. The Base Monitoring Services are summarized in general as the following items, defined as explained in the narrative following each item:
 - a. Water sampling: The sampling sites listed in the MOA (Exhibit 1, Appendix A spreadsheet A-1 on page 8 shall be visited on the frequency specified in Appendix spreadsheet A-1 on page 8 of the MOA by a qualified monitoring technician employed by CONTRACTOR. Water samples shall be field tested, collected, preserved, stored and transported by CONTRACTOR from each sampling site for analysis for the parameters required in Appendix A-1 of the MOA for each sampling site, in accordance with the requirements specified in Appendix B and C of the MOA and the supplemental QA/QC measures specified in EXHIBIT 2. Also, CONTRACTOR will take field notes at each site using the field site sheet, example is found in EXHIBIT 4.
 - b. Water sample analysis: CONTRACTOR shall collect and analyze water samples by methods approved by NCDWR to the detection limits required by NCDWR listed in MOA Appendix B and C and Supplemental Exhibit 2 for each parameter found in Appendix A. The analysis must be performed using the protocols included in NCDENR's "Standard Operating Procedures Manual, Physical and Chemical Monitoring", 40 CFR Part 136 and 15 NCAC 2B.0505(e)(4), Standard Methods, unless otherwise specified in this contract.
 - c. Water sample analysis reporting to the ASSOCIATION: The results of all of the water sample analyses from all of the sampling sites shall be reported to the ASSOCIATION'S members by means of emailing spreadsheets electronically on the form approved by the ASSOCIATION in EXHIBIT 3. These reports shall be distributed by email as soon as the analysis results are available (unless otherwise specified by the ASSOCIATION, not less frequently than monthly. CONTRACTOR will provide paper copies of field note sheets for every sampling site, monthly. The water quality monitoring results and data for each month shall be reported by the CONTRACTOR to the ASSOCIATION by the end of the following month.
 - d. Water sample analysis reporting to NCDWR: The ASSOCIATION shall be responsible for immediately contacting NCDWR to finalize arrangements for reporting the required data. Normally, a committee of the ASSOCIATION shall review the analysis for the QA/QC measures specified in EXHIBIT 2 before the data is reported to NCDWR.
 - e. Data collection or analysis errors: CONTRACTOR agrees to promptly notify the specified representatives of the ASSOCIATION in the event any samples are not

collected or analyzed as required in the MOA and this contract, and to give a general reason and description of follow-up action, not later than 21 days after the scheduled sample collection date.

- f. Instream monitoring: Samples shall be collected at as close to mid-stream as possible.
- g. Same day monitoring: Sample stations in each sub-basin (as identified in Appendix A-1 shall be monitored on the same day.
- h. Frequency: Monitoring must be done at the frequency specified in Appendix A-1 of the MOA.
- i. Annual certification report: CONTRACTOR shall prepare and submit to the ASSOCIATION'S members and NCDWQ an annual (calendar year) certification report that confirms the amount of the prescribed work completed by CONTRACTOR. The narrative report must be submitted by February 28th of the following year. The report must identify the number of water samples that were not collected, analyzed and/or reported as required pursuant to the MOA and all data that was qualified.

2. Additional Monitoring Services

Upon mutual agreement of the ASSOCIATION and CONTRACTOR, this CONTRACT may be amended to include additional monitoring services that are determined desirable by the ASSOCIATION. MERITECH shall have sixty (60) days to respond to any changes in monitoring services before the CONTRACT is amended.

SECTION II. TERM OF AGREEMENT

The term of this CONTRACT is for three years from September 1, 2017 through August 31, 2020.

SECTION III. COMPENSATION

- 1. Amount due: The ASSOCIATION hereby covenants and agrees that the ASSOCIATION shall pay the CONTRACTOR, when due and payable under the following terms for the performance of the services described in Section I(A) as follows:

Contract Cost Breakdown

| | | |
|------------------------|----------------------------|--------------------|
| Vehicle /Miles | 12390 miles X .57/ mile= | \$7,062.00 |
| Labor/ Technicians | 472 hrs | |
| Management | 200 hrs | |
| Reporting | <u>300 hrs</u> | |
| Field & admin Costs | 972 hrs @ \$36.00/ hr ave. | \$34,992.00 |
| | | <u>\$42,054.00</u> |
| Analysis | | \$45,228.00 |
| Equipment | | <u>\$3,000.00</u> |
| Total 2017-2018 | | \$90,282.00 |

- *Field sampling events will include pH, Temperature, DO and Conductivity at the surface of sampling site.*

Analytical Costs

| Test | Reporting Limit (mg/L) | Method | Quantity/ Year | Cost Per Test | Cost Per Year |
|---------------------------|------------------------|-----------|----------------|---------------|--------------------|
| Total Suspended Solids | 1 | SM 2540D | 468 | \$9.00 | \$4,212.00 |
| Ammonia, Nitrogen | 0.1 | EPA 350.1 | 468 | \$12.00 | \$5,616.00 |
| TKN | 0.20 | EPA 351.1 | 468 | \$21.00 | \$9,828.00 |
| Nitrate/Nitrite, Nitrogen | 0.10 | EPA 353.2 | 468 | \$15.00 | \$7,020.00 |
| Phosphorus, total | 0.020 | EPA 200.7 | 468 | \$12.00 | \$5,616.00 |
| Fecal Coliform | 1 col/100 ml | SM 9222D | 468 | \$17.00 | \$7,956.00 |
| Turbidity | 1.0 NTU | EPA 180.1 | 468 | \$10.00 | \$4,680.00 |
| Hardness, total | 0.662 | SM 2340B | 12 | \$25.00 | \$300.00 |
| TOTAL | - | - | | | \$45,228.00 |

| Year | % Increase | Annual Cost |
|------------------------------|------------|-------------|
| September 2017 - August 2018 | - | \$90,282.00 |
| September 2018 - August 2019 | 2 % | \$92,087.64 |
| September 2019 - August 2020 | 2 % | \$93,929.39 |

2. Payment requests: CONTRACTOR shall be eligible to submit monthly payment requests for a portion of the lump sum CONTRACT amount, provided for in the CONTRACT award notice. Payment requests shall not be submitted more frequently than monthly.

3. Payment by ASSOCIATION: ASSOCIATION shall pay CONTRACTOR'S invoice within thirty (30) days of QA/QC verification (via on-site meeting or reviewing spreadsheets via email) by the ASSOCIATION.
4. Reimbursement by CONTRACTOR: The ASSOCIATION shall not be required to pay CONTRACTOR for any unreportable or invalid data that does not meet the requirements of this CONTRACT. In the event of a disputed or contested billing, only that portion so contested will be withheld from payment, and the undisputed portion will be paid. In the event the ASSOCIATION has paid for monitoring services and data that are later determined to be unreportable or invalid, the CONTRACTOR shall promptly reimburse the ASSOCIATION for the cost of said monitoring. In such an event, the party discovering such invalid data shall promptly notify the other party of such unreportable or invalid data, and the CONTRACTOR shall reimburse the ASSOCIATION within 30 days of such notification.

SECTION IV. LIABILITY AND INDEMNIFICATION

1. Indemnification by CONTRACTOR: CONTRACTOR agrees to indemnify ASSOCIATION from any claims, damages, losses, and costs, including, but not limited to, reasonable attorney's fees and litigation costs, arising out of claims by third parties for property damage and bodily injury, including death, caused by the negligence or willful misconduct of the CONTRACTOR, CONTRACTOR'S employees, affiliated corporations, officers, agents and subcontractors in connection with the CONTRACT.
2. Indemnification by ASSOCIATION: ASSOCIATION agrees to indemnify CONTRACTOR from any claims, damages, losses, and costs, including, but not limited to, reasonable attorney's fees and litigation costs, arising out of claims by third parties for property damage and bodily injury, including death to the proportionate extent, caused by the negligence or willful misconduct of the ASSOCIATION, the ASSOCIATION'S employees, or agents in connection with the CONTRACT.
3. Proportionate Indemnification: If the negligence or willful misconduct of both ASSOCIATION and CONTRACTOR (or a person identified above for whom each is liable) is a cause of such damage or injury, the loss, cost, or expense shall be shared between the ASSOCIATION and CONTRACTOR in proportion to their relative degrees of negligence or willful misconduct and the right of indemnity shall apply for such proportion.

SECTION V. COMPLIANCE WITH LAWS

CONTRACTOR agrees that in performing the required services, CONTRACTOR will comply with applicable regulatory requirements including federal, state and local laws, rules, regulations, orders, codes, criteria and standards.

SECTION VI. CONTRACTOR'S INSURANCE

During the performance of this CONTRACT, the CONTRACTOR shall maintain the following insurance:

- a. Comprehensive General Liability Insurance with bodily injury limits of not less than \$1,000,000 for each occurrence and not less than \$1,000,000 in the aggregate, and with property damage limits of not less than \$100,000 for each occurrence and not less than \$1,000,000 in the aggregate.
- b. Automobile Liability Insurance with a combined single limit of not less than \$1,000,000 for each accident.
- c. Worker's Compensation Insurance in accordance with statutory requirements and Employers' Liability Insurance with limits of not less than \$100,000 for each accident.
- d. Professional Liability Insurance with limits of not less than \$1,000,000 annual aggregate.
- e. The CONTRACTOR shall name the ASSOCIATION as an additional insured on the policy.

SECTION VII. ASSOCIATION'S RESPONSIBILITIES

The ASSOCIATION shall be responsible for the following:

- a. Approve all procedures established to govern the relationship among the ASSOCIATION, CONTRACTOR, and third parties.
- b. Provide designated personnel to represent the ASSOCIATION in matters involving the CONTRACTOR.
- c. Payment of invoices for services in accordance with Section III.

SECTION VIII. TERMINATION OF CONTRACT FOR CAUSE

In the event of failure by the CONTRACTOR to perform in accordance with the terms of this CONTRACT, ASSOCIATION shall have the right to terminate the CONTRACT upon 14 days written notice to the CONTRACTOR, in which event CONTRACTOR shall have neither the obligation nor the right to perform further services under this CONTRACT.

SECTION IX. UNCONTROLLABLE FORCES

Neither CONTRACTOR nor the ASSOCIATION shall be considered to be in default of the provisions of this CONTRACT if delays in or failure of performance shall be due to uncontrollable forces. The term "uncontrollable forces" shall mean any event that results in the prevention or delay of performance by a party, and that is beyond the control of the non-performing party. The term "uncontrollable forces" includes, but is not limited to, fire, acts of God, flood, earthquakes, major storms, lightning, epidemic, war, riot, and civil disturbance.

SECTION X. GOVERNING LAW

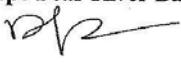
The laws of the State of North Carolina shall govern this CONTRACT.

SECTION XI. ASSIGNMENT

The CONTRACTOR shall not assign, sublet or transfer any rights under or interest in this CONTRACT, including monies that are or may become due. Provided, however, for a period of 90 days from the initial date of this CONTRACT and upon written notice to the ASSOCIATION, CONTRACTOR may assign and transfer any rights under or interest in this Contract, including monies that are or may become due, to a purchaser of substantially all of the assets of CONTRACTOR without the prior consent, written or oral, of the OWNER. Nothing contained in this paragraph shall prevent the CONTRACTOR from employing such independent consultants, associates or subcontractors, as it may deem appropriate to assist the CONTRACTOR in the performance of the services rendered.

Upper Cape Fear River Basin Association

ATTEST

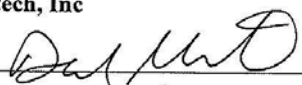
By: 
Dennis Hodge, UCFRBA Chairman

Secretary

Date: 6/28/2017

Meritech, Inc

ATTEST

By: 
Date: 6/29/17

David Merritt, Vice President Meritech, Inc.

+

UPPER CAPE FEAR RIVER BASIN ASSOCIATION MONITORING SERVICES

BETWEEN UPPER CAPE FEAR RIVER BASIN ASSOCIATION, INC.
AND MERITECH, INC

Addendum to Contract February 6, 2018

Removal of Hardness from Randleman Sites

Analytical Costs

| Test | Reporting Limit (mg/L) | Method | Quantity/Year | Cost Per Test | Cost Per Year |
|---------------------------|------------------------|-----------|---------------|---------------|--------------------|
| Total Suspended Solids | 1 | SM 2540D | 468 | \$9.00 | \$4,212.00 |
| Ammonia, Nitrogen | 0.1 | EPA 350.1 | 468 | \$12.00 | \$5,616.00 |
| TKN | 0.20 | EPA 351.1 | 468 | \$21.00 | \$9,828.00 |
| Nitrate/Nitrite, Nitrogen | 0.10 | EPA 353.2 | 468 | \$15.00 | \$7,020.00 |
| Phosphorus, total | 0.020 | EPA 200.7 | 468 | \$12.00 | \$5,616.00 |
| Fecal Coliform | 1 col/100 ml | SM 9222D | 468 | \$17.00 | \$7,956.00 |
| Turbidity | 1.0 NTU | EPA 180.1 | 468 | \$10.00 | \$4,680.00 |
| TOTAL analytical | - | - | | | \$44,928.00 |

| Year | % Increase | Annual Cost |
|------------------------------|------------|-------------|
| September 2017 - August 2018 | - | \$89,982.00 |
| September 2018 - August 2019 | 2 % | \$91,781.64 |
| September 2019 - August 2020 | 2 % | \$93,617.27 |

Should you have any question or require further information please feel free to contact us at your convenience.

Regards,

David Merritt

David Merritt
Vice President
Meritech, Inc.

APPENDIX G: NC DWR 2015 Field Visit



PAT MCCRORY

Governor

DONALD R. VAN DER VAART

Secretary

S. JAY ZIMMERMAN

Director

December 17, 2015

To: Syd Miller, Upper Cape Fear River Basin Association TAC Chair
Through: Cyndi Karoly, Water Sciences Section Chief *CK*
Steve Kroeger, Ecosystems Branch Supervisor *SK*
Jennifer Schmitz, Quality Assurance Coordinator *JS*
From: Carrie Ruhlman, Monitoring Coalition Coordinator *CR*
RE: 2015 Upper Cape Fear River Basin Association End-of-Year Report

2014 Annual Report

The Upper Cape Fear River Basin Association (UCFRBA) 2014 annual report and data was received by the Division and satisfy the requirements outlined in the Memorandum of Agreement.

2015 Field Visit

On December 8, 2015, Jennifer Schmitz and I accompanied Wesley Yance of Meritech, as he monitored the following six stations in the Upper Cape Fear River basin:

- B5390800 – Cotton Creek near Star
- B5100000 – Deep River near Parks Crossroads
- B5070000 – Deep River at Ramseur
- B4870000 – Haskett Creek at the Asheboro WWTP
- B4920000 – Deep River near Central Falls
- B4800000 – Haw River near Haywood

Overall, monitoring was conducted efficiently and consistently. It is my opinion that the field work conducted for the UCFRBA is done in a professional and reliable manner.

Mr. Yance used a Hanna H19828 multi-parameter meter to measure field parameters (DO, pH, temperature and conductivity). He also had a back-up meter of the same make and model. Meters were stored in a clean environment and were in working condition. Additionally, Mr. Yance carries extra DO membranes and solution for small repairs in the field.

The meter was calibrated at the first station prior to sampling. Mr. Yance had an adequate supply of standards and buffers in preferred values. Bottles were labeled with lot numbers and expiration dates. Dates received and opened are documented in log books and on containers in the lab.

A 3-point pH calibration was conducted with 4.00, 7.00, and 10.00 buffers. pH was checked in the 7.00 buffer after calibration. Conductivity was calibrated using a 1402 $\mu\text{S}/\text{cm}$ NaCl standard and checked with 710 $\mu\text{S}/\text{cm}$ and 46.7 $\mu\text{S}/\text{cm}$ NaCl standards. DO was calibrated in water-saturated air. Additionally, a Winkler titration was performed at the first site sampled, which corroborated the meter reading.

According to Mr. Yance, meter maintenance is performed routinely and on an as-needed basis. This information was confirmed by records in the meter maintenance log.

All field parameters were measured *in-situ*, in flowing channels of the waterbodies. Mr. Yance was very knowledgeable of the sites and was able to indicate whether or not the field measurements and flow conditions were consistent with what he typically sees at the stations. He completed detailed field sheets at each site and checked GPS coordinates. All coordinates matched those specified in the MOA.

Sample containers were pre-packaged by site, in ziploc bags from the lab. Bottles were labeled and grouped to avoid confusion during sampling. Nutrient and fecal bottles were pre-preserved. Mr. Yance used new, sterilized transfer containers to collect the water at each site. Lids were kept on the sampling bottles until they were ready to be filled, thus reducing the risk of contamination. After sampling, bottles were immediately placed back into the ziploc bags and put on ice. A temperature blank was present in the cooler containing samples.

DO was checked prior to sampling at each site. A mid-day calibration check was performed after sampling was completed at the third site and a post-sampling calibration check was performed in the field prior to returning to the lab. For each calibration check, Mr. Yance checked DO against the theoretical value, conductivity at 0 and 721 $\mu\text{S}/\text{cm}$ and pH at 7.0 SU. All information was recorded on the calibration sheet and all values were within range.

Mr. Yance followed proper safety precautions throughout the day. He used his hazard lights and flashing beacon as required and wore a safety vest.

Given Mr. Yance's diligence and experience, I am confident that the samples and field data collected for the UCFRBA are of high quality. I appreciate the cooperation of Meritech on the day of the field visit and look forward to working with them on the continued success of the UCFRBA sampling program. If you have any questions or comments, please feel free to contact me at (919)743-8411 or via email at carrie.ruhlman@ncdenr.gov.

cc: Scott Pickard, QA/QC Committee (spickard@cityofgraham.com)
Mike Schlegel, TJCOC (mschlegel@tjcog.org)
Cy Stober, PTRC (cstober@ptrc.org)
Kris Pawlak, Meritech (kpmeritech@bellsouth.net)