

AGENDA



PIEDMONT TRIAD
RURAL PLANNING ORGANIZATION

Transportation Advisory Committee (TAC) and Technical Coordinating Committee (TCC) Meeting

10:00am

Wednesday, December 18, 2013

PTRC Large Conference Room

1398 Carrolton Crossing Drive Kernersville, NC 27284

Welcome

- | | | |
|-----|---|----------------|
| I. | Conflict of Interest Statement | Talmadge Baker |
| II. | Welcome, Review Agenda and Public Comment | Talmadge Baker |

Action Items

- | | | |
|------|--|----------------|
| III. | TAC/TCC meeting minutes October 16, 2013 | Talmadge Baker |
| IV. | PTRPO SPOT 3.0 Identification of Projects Policy | Jesse Day |
| V. | PTRPO Projects for SPOT 3.0 Submission | Talmadge Baker |
| VI. | 2014 Meeting Dates | Talmadge Baker |
| VII. | Updated Funding Amounts for FY 2014 | Jesse Day |

Discussion Items

- | | | |
|-------|---|-----------|
| VIII. | County Prioritization Public Workshop Results | Jesse Day |
|-------|---|-----------|

Other Business

- | | | |
|-------|----------------------------|-----------------------------|
| IX. | Division Updates | Planning/District Engineers |
| X. | TPB Update | TPB Staff |
| XI. | Local Jurisdiction Updates | TCC Members |
| XII. | RPO Update | Jesse Day |
| XIII. | New Business | Talmadge Baker |
| XIV. | Adjourn | Talmadge Baker |

Next Meeting Date

February 19, 2014

***You are invited to stay afterwards for the PTRC Board of Delegates Meeting and Ribbon Cutting Celebration!
If you plan to attend, please kindly email Cassidy Pritchard cpritchard@ptrc.org***

Directions to the PTRC Offices
1398 Carrollton Crossing Drive Kernersville, NC 27284

From the East

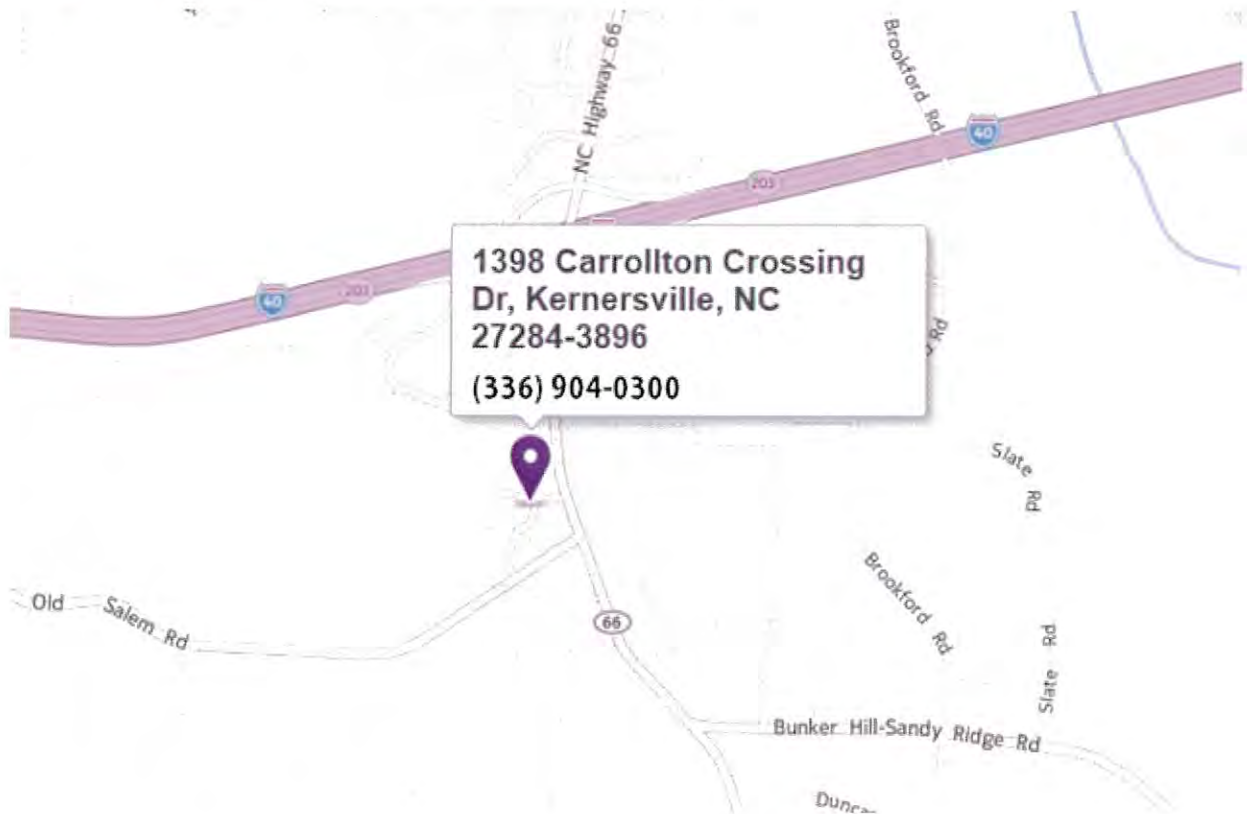
Take Interstate 40 West to Exit 203 for NC 66 Kernersville/High Point....turn left off exit ramp onto NC 66 South, destination is on the right about 1/2 mile on right

From the West

Take Interstate 40 East to Exit 203 for NC 66 Kernersville/High Point....turn right off exit ramp onto NC 66 South, destination is on the right about 1/2 mile on right

Where are you located?

A: The PTRC is located at 1398 Carrollton Crossing Drive in Kernersville. Our office is located just off of Highway 66 South in Kernersville, about a quarter of a mile south of Interstate 40.





PIEDMONT TRIAD
RURAL PLANNING ORGANIZATION

A g e n d a I t e m

Agenda Item III

TCC/TAC Meeting Minutes October 16, 2013

Background

The minutes from the meeting are attached.

Action Requested

Consideration of the minutes

PIEDMONT TRIAD RURAL PLANNING ORGANIZATION

MINUTES

Joint Meeting of the Technical Coordinating Committee (TCC) and Transportation Advisory Committee (TAC)

October 16, 2013

TAC Members Attending

Talmadge Baker	City of Asheboro
Jimmy Blake	Town of Biscoe
Zane Cardwell	Rockingham County
Alvin Foster	Town of Yanceyville
Jackie Morris	Montgomery County

Staff

Jesse Day	PTRC
Christina Walsh	PTRC

TCC Members Attending

Kelly Becker	NCDOT Mobility/Safety
Trevor Nuttall	City of Asheboro
Rob Stone	NCDOT, Division 8
Ed Lewis	NCDOT, Division 7
Roger King	RCATS
Jeff Loflin	NCDOT, Division 8
Greg Patton	City of Randleman
Vernia Wilson	NCDOT, TPB

The meeting began at 10:07am

- I. **Conflict of Interest.** Talmadge Baker read the conflict of interest statement. No one indicated any conflict(s) of interest.
- II. **Welcome, Review Agenda and Public Comment.** Talmadge Baker welcomed those in attendance and reviewed the agenda. Mr. Baker offered public comment, but no comments were offered.
- III. **Strategic Transportation Investments.** Jesse Day tried to start the STI video from NCDOT, but the link had been removed from the original location on the NCDOT website.

Action Items

- IV. **Adoption of the June 19, 2013 TAC/TCC Minutes.** Jimmy Blake made a motion, Zane Cardwell 2nd. The motion passed unanimously.
- V. **Adoption of the September 23, 2013 TCC Minutes.** Greg Patton made a motion, Trevor Nuttall 2nd. The motion passed unanimously.
- VI. **PTRPO Identification of Projects for Prioritization.** Jesse Day presented a draft identification of projects for prioritization policy. The policy deals with how to identify projects for prioritization consideration, but does not pertain to the RPO awarding points for a project. That policy update will occur at a later date. A request was made to consider adding "locally adopted resolution" for including projects for prioritization. Other grammatical changes will be made and included in an update for consideration at the December TCC/TAC meeting.
- VII. **Highway Projects in SPOT Database.** Jesse Day presented the existing highway projects that are included in the statewide SPOT database for the Piedmont Triad area. Mr. Day requested if there are projects that need to be changed or removed to notify him soon, to communicate this with the NCDOT Strategic Prioritization Office (SPOT). No action taken.

Discussion Items

VIII. County Prioritization Public Input Workshops. Upcoming public input meetings are scheduled for future transportation projects. A meeting is scheduled in each of the 4 RPO counties:

Caswell County	November 4th 3:30-5:30pm	Courthouse	Yanceyville
Montgomery County	November 6th 3:00-5:00pm	Commissioners Room	Troy
Randolph County	October 29th 3:00-5:00pm	Old Courthouse	Asheboro
Rockingham County	October 30th 3:00-5:00pm	Ag Extension Office	Wentworth

All modes of transportation will be discussed and previous priorities will be shown with information on STI legislation information.

IX. County TIP Committees and Prioritization

As SPOT 3.0 ramps up in the fall, the PTRPO will need to be prepared with local transportation priorities. Typically, project ideas are generated at the County level, ranked by County and then scored by the PTRPO TCC and TAC. PTRPO staff will work with each County planning director to develop an open and transparent process for establishing a County TIP committee to recommend projects.

X. Division 7 – Ed Lewis provided a written report. Wentworth sidewalks are being review by SHPO. No questions.

Division 8 – Rob Stone mentioned there was no report, but he would be happy to answer any questions. Mr. Stone has recently been promoted to Division Engineer. Mr. Morris asked about the Troy Bypass and where that stood. The project is moving forward with right of way.

XI. TPB Update. Vernia Wilson provided an update on the CTPs ongoing. The Western Rockingham CTP is undergoing internal review by TPB and draft recommendations will be presented to the towns this fall. The Asheboro CTP is scheduled to be heard by the Asheboro City Council Nov. 7th and Randolph County on Dec. 2nd.

XII. Local Updates. Jimmy Blake mentioned that the Aberdeen, Carolina and Western shoreline railroad is opening a repair shop in Candor and will have 4 separate tracks available for repairing locomotives or other train cars. Greg Patton invited everyone to the Commerce Square ribbon cutting the upcoming Saturday. Mr. Baker mentioned that the Sunset Theatre is undergoing a renovation to enhance their performing arts space.

XIII. RPO Update. Learning all the ins and outs of STI is a challenge. Please encourage folks to attend the upcoming public input workshops. This will be an opportunity to both identify priorities for consideration, but also to learn about the new legislation.

XIV. New Business. None

Talmadge Baker, TAC Chair

Date

Jesse Day, Secretary

Date



PIEDMONT TRIAD
RURAL PLANNING ORGANIZATION

A g e n d a I t e m

Agenda Item IV

PTRPO Identification of Projects for Prioritization Process

Background

The Identification of Projects for Prioritization Process Document summarizes how projects are submitted for each mode, how the project's data driven criteria is determined and scored, while providing helpful background information.

The attached document was modified from the previous meeting: adding a local resolution of adoption when a project is not in an existing plan and also changes to the bike and ped section.

Action Requested

Consideration of the SPOT 3.0 Identification of Projects for Prioritization Process Document



PIEDMONT TRIAD RURAL PLANNING ORGANIZATION

Prioritization 3.0: Identification of Projects for Evaluation by NCDOT

Prioritization 3.0 Background

The previous Governor, Perdue, set the direction for NCDOT's current Transportation Reform initiative with Executive Order No. 2 in 2009. This order mandates a professional approval process for project selection. NCDOT created the Strategic Prioritization Process in response. The first version of the Strategic Prioritization Process (Prioritization 1.0) was used to support development of the FY 2012-2018 Transportation Improvement Program. The second version (Prioritization 2.0), initiated in June 2011, supported development of the FY 2014-2020 Transportation Improvement Program. However, due to new federal legislation approval and a change in administration at the State level, the FY 2014-2020 was delayed and not approved by the Board of Transportation.

The Prioritization processes and the varying approaches of ranking projects at a local level also led to a new legislative requirement last year (S.L. 2012-84) which calls for NCDOT to oversee the approval of local methodologies used to assign points to rank projects. The legislation must be implemented as part of the Prioritization 3.0 process. Over the last year, NCDOT has also been working with internal and external stakeholders to revamp the process. Significant changes have been made to the process and were driven by House Bill 817, also known as Strategic Transportation Investments (STI). The bill established three funding categories (**Statewide, Regional, and Division**) and allocations across all modes.

Prioritization 3.0 will be a primary input for the FY 2016-2020 TIP and Developmental Plan for FY 2021-2025. The first five years (2016-2020), also known as the Five-Year Work Program, is considered committed. NCDOT has stated its intent to deliver at least 95% of the program within this five-year time frame, while the Developmental Plan (FY 2021-2025) is subject to change. Prioritization 3.0 is a multi-modal process. Highway, transit, bicycle and pedestrian, aviation, and rail project needs will be evaluated. Prioritization 3.0 will cover newly submitted project needs as well as projects that had been submitted under Prioritization 2.0 but were unfunded or funded in FY 2016 or later. You may view more information on the Strategic Transportation Investments (STI) at <http://www.ncdot.gov/strategictransportationinvestments/default.html>.

Scoring of Project Need

The Statewide Mobility category in Prioritization 3.0 is 100% data driven. Therefore the remaining Regional Impact and Division Needs categories can involve up to three scoring components: 1) a data driven, quantitatively scored estimate of project need, 2) RPO priority score, and 3) NCDOT Division Engineer priority score. The first step of Prioritization 3.0 is the identification of projects for evaluation and data driven scoring by NCDOT's Strategic Planning Office of Transportation (SPOT). **This document focuses solely on submitting projects for the data driven evaluation of projects.** The project submittal is guided by the following constraints:

Highway

- Submit up to 13 new roadway projects not previously submitted under Prioritization 2.0 (*previously submitted highway projects will already be in the database*)
- The number of roadway safety and infrastructure health project submittals is not restricted. (*However, no RPO rankings or priority points can be assigned to these projects. These projects will be evaluated in a separate process focused strictly on need and available resources.*)

Other Modes

- Resubmit public transportation, aviation, bicycle, and pedestrian projects that were not funded previously, which will require a local funding match. (*Previously submitted projects will be cleared*)
- Submit up to a total of 20 bicycle and pedestrian projects.
- Submit up to 5 new rail projects.
- The number of transit capital project submittals is not restricted, but requires local match.
- The number of aviation capital project submittals is not restricted, but requires local match.

RPO staff will begin identification of projects for evaluation, by compiling a list of candidate projects from previous submissions and recent planning efforts. Staff will coordinate with potential implementing sponsor agencies (including member governments, airport authorities, transit providers and other stakeholders).

RPO staff will then screen the candidate project list to narrow it to not exceed the maximum number of new project submittals. The RPO staff will also consult the County TIP committee, consisting of TAC and TCC members from each County. The TAC will review and take action on the recommended list of new project submittals at the December, 2013 meeting. NCDOT intends to return the RPO's scored projects in early *May 2014*. The screening process will consider a range of factors including:

- Eligibility requirements (e.g.; safety, in an adopted plan, etc.);
- Relative need;
- Competitiveness based on the NCDOT ranking process and criteria;
- Realistic potential for funding and implementation between FY 2016-2020.

Once the scores are returned in May, the RPO will be able to apply local points. The RPO staff will develop a scoring and ranking methodology across all modes for consideration in early 2014 be shared with the public and will consider any public input into the assignment of points. The final assignment of points by the RPO will also be available via the RPO's website.

The results of the RPO ranking methodology will be compared to the results of the NCDOT's scoring of project need. Other factors like project readiness, available funding, and RPO priorities will also be considered. A final decision on how to allocate RPO priority points will then be made. RPO scores for all modes are due to SPOT by July 31, 2014.

Proposed Methodology: Identification of Projects for Evaluation

Demonstration of project need is key to a project's competitiveness under NCDOT's project selection process. The selection criteria material is provided in the following order: highway projects, public transportation, bicycle and pedestrian projects, and aviation.

Highway Projects

Project Types

Roadway Mobility

Roadway mobility projects increase roadway capacity to meet traffic demand and move traffic more efficiently. Such projects should be identified in a Comprehensive Transportation Plan (CTP) to be eligible. Examples include:

- Widen roadway;
- Construction of a new roadway (including relocation of existing roadway sections);
- Intersection improvements;
- Interchange construction or reconstruction; and
- Access management improvements.

Projects for implementation in Fiscal Years 2016-2025 should be submitted.

Modernization Projects (*Not Prioritized*)

Roadway modernization project types are focused on upgrading roadways without adding substantial capacity.

Examples of modernization projects include:

- Widen roadway lane and/or shoulder width;
- Adding turn lanes;
- Upgrading to current design standards (including interstate standards); and

Roadway Infrastructure Health Projects (*Not Prioritized*)

Infrastructure health projects include maintenance, rehabilitation, bridge replacement, and related projects.

Roadway Safety Projects (*Not Prioritized*)

Roadway safety projects include a wide range of treatments in response to documented safety issues.

Project Eligibility Requirements

Roadway Projects

For consideration on the List of New Project Submittals, the project should meet as many of the following criteria as possible:

- Part of locally adopted Comprehensive Transportation Plan, another adopted plan or a local resolution of support
- Exhibit high crash rates
- Support access to existing employment centers
- Address road capacity issues or congestion
- Include facilities for bicycles, pedestrian and/or transit (except Interstate facilities)
- Involve collaboration between jurisdictions (where applicable)

Submission and Scoring Methodology

For the PTRPO only 13 **new highway** projects may be submitted to NCDOT. In addition, 5 existing projects in the system may be replaced with 5 new projects. Therefore, a total of 18 new projects can be submitted to NCDOT. If the number of requested projects exceeds the number allowed to be submitted, staff will provide detailed information by project on the factors described in the Project Eligibility Requirements to the County TIP Committee and the PTRPO TAC/TCC. Staff may suggest removal of projects that do not meet as many Project Eligibility Requirements as other projects. The County TIP Committee will rank highway projects for consideration by the PTRPO TAC/TCC for scoring in May 2014, or as soon as data driven scores are available for all the highway projects in the SPOT database.

NCDOT Highway Data Driven Criteria Summary

Funding Category	Quantitative Data
<p>Statewide Mobility</p>	<p>[Travel Time] Benefit/Cost = 30%</p> <ul style="list-style-type: none"> Travel time savings the project is expected to provide over 30 years divided by the cost of the project to NCDOT <p>Congestion = 30%</p> <ul style="list-style-type: none"> Comparison of the existing traffic volume to the existing capacity of the roadway (Depending on data availability, congestion may be measured by comparing congested travel speeds to uncongested speeds.) <p>Economic Competitiveness = 10%</p> <ul style="list-style-type: none"> Estimate the number of long-term jobs and the percent change in economic activity within the NCDOT Division the project is expected to provide over 30 years <p>Safety = 10%</p> <ul style="list-style-type: none"> Evaluation of the number, severity, and frequency of crashes along the roadway <p>Multimodal [& Freight + Military] = 20%</p> <ul style="list-style-type: none"> Measure of existing congestion along key military and truck routes, and routes that provide connections to transportation terminals <p>Total = 100% (0% Local Input)</p>
<p>Regional Impact</p>	<p>[Travel Time] Benefit/Cost = 30%</p> <ul style="list-style-type: none"> Travel time savings the project is expected to provide over 30 years divided by the cost of the project to NCDOT <p>Congestion = 30%</p> <ul style="list-style-type: none"> Comparison of the existing traffic volume to the existing capacity of the roadway (Depending on data availability, congestion may be measured by comparing congested travel speeds to uncongested speeds.) <p>Safety = 10%</p> <ul style="list-style-type: none"> Evaluation of the number, severity, and frequency of crashes along the roadway <p>Total = 70% (30% Local Input)</p>
<p>Division Needs</p>	<p>[Travel Time] Benefit/Cost = 20%</p> <ul style="list-style-type: none"> Travel time savings the project is expected to provide over 30 years divided by the cost of the project to NCDOT <p>Congestion = 20%</p> <ul style="list-style-type: none"> Comparison of the existing traffic volume to the existing capacity of the roadway (depending on data availability, Congestion may be measured by comparing congested travel speeds to uncongested speeds) <p>Safety = 10%</p> <ul style="list-style-type: none"> Evaluation of the number, severity, and frequency of crashes along the roadway <p>Total = 50% (50% Local Input)</p>

Public Transportation Projects

Project Types

General Information

Only Major Capital projects that can be accomplished in Fiscal Years 2015 and 2016-2020 should be submitted. Any phase, start-up or continuation of a capital project, can be submitted as long as a portion can be accomplished by 2020. Projects submitted for FY 2015 will not be prioritized. NCDOT requires only submitting projects in which a local funding source has been identified.

Expansion Vehicles

These project types are focused on increasing efficiency. Example projects include:

- New bus routes and/or services (demand response, headway reductions)
- Purchase of new buses or vans

Facilities

These project types are focused on replacing, improving, or constructing new transit-related facilities. Examples of projects include:

- Transit-related facilities
- Park and Ride Lots
- Bus Shelters

Project Eligibility Requirements

Public Transportation Projects

Only Capital (expansion and facilities) projects will be scored and ranked. **However, NCDOT is requiring all projects submitted must have a designated local funding source for FY 2015-2020.**

Submission and Scoring Methodology

Each County public transit provider will submit Project Requests to NCDOT. Fiscal year 2015 projects are due November 15, 2013 while fiscal year 2016-2020 projects are due November 29, 2013. Project Requests that are scored by NCDOT and have secured a local funding commitment, will be considered for scoring in May 2014. The County TIP Committee may rank public transportation projects for scoring by the PTRPO TAC/TCC. In absence of a County TIP Committee rank, the PTRPO TAC/TCC may use the data driven criteria to determine what projects rank highest in each County and assign points in May 2014.

NCDOT Public Transportation Data Driven Criteria Summary

Funding Category	Public Transit Scoring (Expansion) Quantitative Data
<p>Regional Impact Total = 70% (30% Local Input)</p>	<p>Benefit/Cost = 45%</p> <ul style="list-style-type: none"> • Assesses the projected ridership for the life of the expansion vehicle relative to the cost of the vehicle to the state <p>Vehicle Utilization Data = 5%</p> <ul style="list-style-type: none"> • Examines how systems are maximizing current fleet <p>System Safety = 5%</p> <ul style="list-style-type: none"> • Compares system safety statistics to the national average <p>Connectivity = 5%</p> <ul style="list-style-type: none"> • Measures the connectivity of the proposed expansion of service to destinations (education, medical, employment, retail, other transfers) <p>System Operational Efficiency = 10%</p> <ul style="list-style-type: none"> • Compares the number of trips to revenue hours reported
<p>Division Needs Total = 50% (50% Local Input)</p>	<p>Benefit/Cost = 25%</p> <ul style="list-style-type: none"> • Assesses the projected ridership for the life of the expansion vehicle relative to the cost of the vehicle to the state <p>Vehicle Utilization Data = 5%</p> <ul style="list-style-type: none"> • Examines how systems are maximizing current fleet <p>System Safety = 5%</p> <ul style="list-style-type: none"> • Compares system safety statistics to the national average <p>Connectivity = 5%</p> <ul style="list-style-type: none"> • Measures the connectivity of the proposed expansion of service to vital destinations <p>System Operational Efficiency = 10%</p> <ul style="list-style-type: none"> • Compares the number of trips to revenue hours reported
Funding Category	Public Transit Scoring (Facilities) Quantitative Data
<p>Regional Impact Total = 70% (30% Local Input)</p>	<p>Age of Facility, Facility Demand, Park & Ride, Bus Shelter = 40%</p> <ul style="list-style-type: none"> • Age: examines the age of the facility compared to the useful life of the facility • Facility Demand: measures the demand for new or expanded maintenance and operations facilities • Park & Ride: compares utilization to cost to state to construct • Bus Shelter: examines current demand (boardings and alightings) at the shelter location <p>Benefit-Cost = 5%</p> <ul style="list-style-type: none"> • Examines the benefit (trips) relative to the cost of the project to the state. <p>System Operational Efficiency = 5%</p> <ul style="list-style-type: none"> • Compares the number of trips to revenue hours reported <p>Facility Capacity = 20%</p> <ul style="list-style-type: none"> • Identifies the need for additional capacity by comparing proposed capacity, current usage, and current capacity
<p>Division Needs Total = 50% (50% Local Input)</p>	<p>Age of Facility, Facility Demand, Park & Ride, Bus Shelter = 30%</p> <ul style="list-style-type: none"> • Age: examines the age of the facility compared to the useful life of the facility • Facility Demand: measures the demand for new or expanded maintenance and operations facilities • Park & Ride: compares utilization to cost to state to construct • Bus Shelter: examines current demand (boardings and alightings) at the proposed shelter location <p>Benefit-Cost = 5%</p> <ul style="list-style-type: none"> • Examines the benefit (trips) relative to the cost of the project to the state. <p>System Operational Efficiency = 5%</p> <ul style="list-style-type: none"> • Compares the number of trips to revenue hours reported <p>Facility Capacity = 10%</p> <ul style="list-style-type: none"> • Identifies the need for additional capacity by comparing proposed capacity, current usage, and current capacity

DRAFT

Data for the criteria will be obtained from NTD, OPSTATS, and local transit systems and will include the following:

Expansion Vehicles Category

- Current Annual Average Trips per Vehicle
- Life Expectancy of Vehicle or Facility
- Projected Ridership
- Total Cost (must determine State Match)
- Maximum Number of Vehicles during Peak Hour
- Total Fleet Size
- System Reported Incidents, injuries, fatalities
- Vital Destinations (medical, employment, retail, education, and other transportation modes)
- Annual Ridership
- Revenue Hours

Facilities

- Facility Age (*excludes Park & Ride, Bus Shelters*)
- -Number of Peak Service Vehicles
- -Number of Facility Bus Bays
- Number of Park & Ride spaces
- Park & Ride Expected Utilization
- Bus Stop Boardings and Alightings (*Bus Shelters*)
- Annual Trips Provided by Facility
- Annual Ridership
- Revenue Hours
- Facilities Capacity (*All*)

Bicycle and Pedestrian Projects

Project Types

Bicycle Projects *(stand alone projects for design and/ or construction)*

Bicycle projects include on-road bike facilities (shoulders, bike lanes, wide outside lanes, sidepaths) and shared-use paths (greenways). NCDOT requires submitting bicycle projects with a minimum cost of \$100,000 and recommends not exceeding \$500,000. The PTRPO can submit a total of 20 new bicycle and pedestrian projects to NCDOT.

Pedestrian Projects *(stand alone projects for design and/ or construction)*

These projects may include sidewalks and intersection improvements. Examples may include curb ramps and pedestrian bridges. NCDOT requires submitting pedestrian projects with a minimum cost of \$100,000 and recommends not exceeding \$500,000. The PTRPO can submit a total of 20 new pedestrian and bicycle projects to NCDOT.

Project Eligibility Requirements

Bicycle & Pedestrian Projects

For consideration on the List of New Project Submittals:

- In an adopted CTP, Bicycle, Pedestrian or Greenway Plan or another locally adopted plan
- Preliminary Evaluation/Study Completed (statement of need, public input and constraints)
- Projects should address as many of the following criteria to be considered for submittals:
 - Evidence of bicycle/pedestrian crashes on adjacent road facilities or nearby intersections
 - On or directly adjacent to High AADT roads (>3000 AADT)
 - Connect to existing bicycle and pedestrian facilities
 - Within ½ mile of schools or parks
 - Connects to shopping center or high employment center
 - In an adopted bicycle, pedestrian, greenway or CTP
 - Right of way in process, owned publicly or demonstrated support by private landowners
 - Involves collaboration between two or more jurisdictions

Submission and Scoring Methodology

A total of 20 new projects may be submitted to NCDOT by *January 31, 2014*. Each County TIP committee may submit new bicycle or pedestrian projects for scoring by NCDOT. In the event that there are more than 5 projects submitted by each County TIP committee or some combination totaling more than 20 projects to the PTRPO TAC/TCC, the PTRPO staff will evaluate projects using the above criteria and recommend projects not meeting criteria be removed from the system. Proof of local support is needed if submitted to NCDOT as a ranked project in May 2014. This local support will need to be demonstrated through a commitment to provide local match funding for the project if awarded by NCDOT.

NCDOT Bicycle and Pedestrian Data Driven Criteria Summary

Funding Category	Quantitative Data
Division Needs	<p>Access = 10%</p> <ul style="list-style-type: none"> This criterion measures community benefit as a result of constructing the proposed project, and is measured by the quantity and significance of destinations associated with the proposed project. Access benefit is also measured by the proximity of the proposed project to the most important end destination. <p>Constructability = 5%</p> <ul style="list-style-type: none"> This criterion measures the readiness of a project to be constructed in the near term. Factors such as secured right-of-way, environmental impact, and completed preliminary engineering work are used to calculate this score. <p>Safety = 15%</p> <ul style="list-style-type: none"> This criterion uses bicycle and pedestrian crash data and speed limit information along project corridors to determine the existing safety need. <p>Demand Density = 10%</p> <ul style="list-style-type: none"> This criterion measures user benefit as a result of constructing the proposed project, and it is measured by the density of population and employment within a walkable or bike-able distance of the proposed project. <p>Benefit/Cost = 10%</p> <ul style="list-style-type: none"> This criterion adds the Access and Demand scores together to create a combined benefit score, and then the benefit is divided into the cost of the project to NCDOT. <p>Total = 50%</p>

Aviation Projects

Project Types

Aviation projects include capital improvements such as **Pavement Expansions that increases capacity** – i.e. a runway extension, a new taxiway, an aircraft parking apron expansion, **Pavement Strengthening, Land Acquisition, Terminal Building Expansions, New Buildings** – i.e. New Terminal buildings, hangars, **New Navigational Aid Equipment** – i.e. Glideslope, Localizer, and other equipment to improve capacity, and **New Lighting Systems** – i.e. Runway and Taxiway edge lighting.

Typically the improvements are included in an Airport Land Plan or in a capital improvement program.

Project Eligibility Requirements

Aviation Projects

For consideration on the List of New Project Submittals:

- In an adopted Airport Land Plan or similar plan adopted and submitted by the airport authority.

Submission and Scoring Methodology

There are no limits to project submittals. Each airport authority has been asked to submit projects to NCDOT by *November 1, 2013*. Following the delivery of project eligibility and scores by NCDOT to the PTRPO, County TIP Committees may rank airport improvement projects for consideration by the PTRPO TAC/TCC. Proof of local funding support is requested if submitted to NCDOT as a ranked and scored project by the PTRPO.

NCDOT Aviation Data Driven Criteria Summary

Funding Category	Quantitative Data
Division Needs	<p>NCDOA Project Rating = 30%</p> <ul style="list-style-type: none"> • Projects prioritized and classified within NC Division of Aviation (NCDOA) established project categories. Assigns point values based on <u>priority</u> of the project and <u>need</u> of the project. <p>FAA Airport Capital Improvement Plan = 10%</p> <ul style="list-style-type: none"> • Federal Aviation Administration Airport Capital Improvement Plan (ACIP) Rating <p>Local Investment Index = 5%</p> <ul style="list-style-type: none"> • A measurement of the project's local funds compared to state funds and provides greater points for projects that have a higher percent of local funding sources (i.e. local or public-private funds) <p>Volume/Demand Index = 10%</p> <ul style="list-style-type: none"> • Index representing traffic (aircraft operations) plus employment density (jobs near the airport). Identifies projects where there is more traffic and in areas with more user demand. <p>Total = 50%</p>

Rail Projects

Project Types

Track, structures, intermodal facility and stations improvements can be funded to support freight or passenger service. Passenger rail service spanning two or more counties is eligible for project selection in the Regional Impact category and other passenger rail service inside a County can be funded through the Division Needs category.

Project Eligibility Requirements

Rail Projects

For consideration on the List of New Project Submittals:

- Identified projects will be shared with the NCDOT Rail Division and approved based on inclusion into Statewide or Regional rail plans or other adopted transportation plans.

Submission and Scoring Methodology

Up to five new projects can be submitted through the RPO. The NCDOT Rail division is holding a Statewide meeting on November 12th to develop a first draft of project submissions into SPOT 3.0.

NCDOT Rail (Track and Structures) Data Driven Criteria Summary

Funding Category	Quantitative Data
Statewide (Freight Only)	<p>Benefit/Cost = 20%</p> <ul style="list-style-type: none"> Benefits associated with emissions savings, fuel savings, travel time savings divided by the project cost to the state <p>Economic Competitiveness = 10%</p> <ul style="list-style-type: none"> High-level relative measure of the anticipated statewide benefits of project improvements in numbers of jobs <p>Capacity/Congestion = 15%</p> <ul style="list-style-type: none"> Percentage that the existing track segment is over-capacity <p>Safety = 15%</p> <ul style="list-style-type: none"> Crash potential for railroad/highway at-grade crossings <p>Accessibility = 10%</p> <ul style="list-style-type: none"> Measures the potential for new or improved accessibility to rail service for industries by a freight rail project <p>Connectivity = 10%</p> <ul style="list-style-type: none"> Values projects on strategic corridors, military, ports, intermodal and transload traffic <p>Mobility = 20%</p> <ul style="list-style-type: none"> Measures either the change in percentage of available capacity or travel time savings provided by project <p>Total = 100%</p>
Regional Impact (Freight / Passenger)	<p>Benefit/Cost = 10% (freight/passenger)</p> <ul style="list-style-type: none"> Benefits associated with emissions savings, fuel savings, travel time savings divided by the project cost to the state <p>Capacity/Congestion = 15% (freight) / 25% (passenger)</p> <ul style="list-style-type: none"> Percentage that the existing track segment is over-capacity <p>Safety = 15% (freight/passenger)</p> <ul style="list-style-type: none"> Crash potential for railroad/highway at-grade crossings <p>Accessibility = 10% (freight only)</p> <ul style="list-style-type: none"> Measures the potential for new or improved accessibility to rail service for industries by a freight rail project <p>Connectivity = 5% (freight only)</p> <ul style="list-style-type: none"> Values projects on strategic corridors, carrying military, ports, intermodal and transload traffic <p>Mobility = 15% (freight) / 20% (passenger)</p> <ul style="list-style-type: none"> Measures either the change in percentage of available capacity or travel time savings provided by project <p>Total = 70%</p>
Division Needs	<p>Same data as Regional Impact, but a total of 50%</p>

Prioritization Process Timeline: 2013-2014

PHASE I: Identify Candidate Projects

- **TAC Considers Policy on Identification of Projects for Evaluation by NCDOT** **October 16**
- Conduct RPO Public Input Meetings (Round 1) **October 29-November 6**
- Aviation Projects Due to NCDOT **November 1**
- Transit FY 15 Projects Due to NCDOT **November 15**
- Transit FY 16-20 Project Due to NCDOT **November 29**
- **TAC Approval of Project Submittal List** **December 2013**
- Submit All Outstanding Projects to NCDOT **Jan. 21-Feb. 17, 2014**

PHASE II: Assign Points & Final Rankings

- **TAC Considers draft ranking and scoring process** **April 2014**
- **NCDOT Scores Released** **May 1, 2014**
- Conduct RPO Public Input Meetings (Round 2) **May 2014**
- **TAC Approval of priority rankings and scoring** **June 2014**
- Submit Scored Projects to NCDOT **July 31, 2014**



Agenda Item

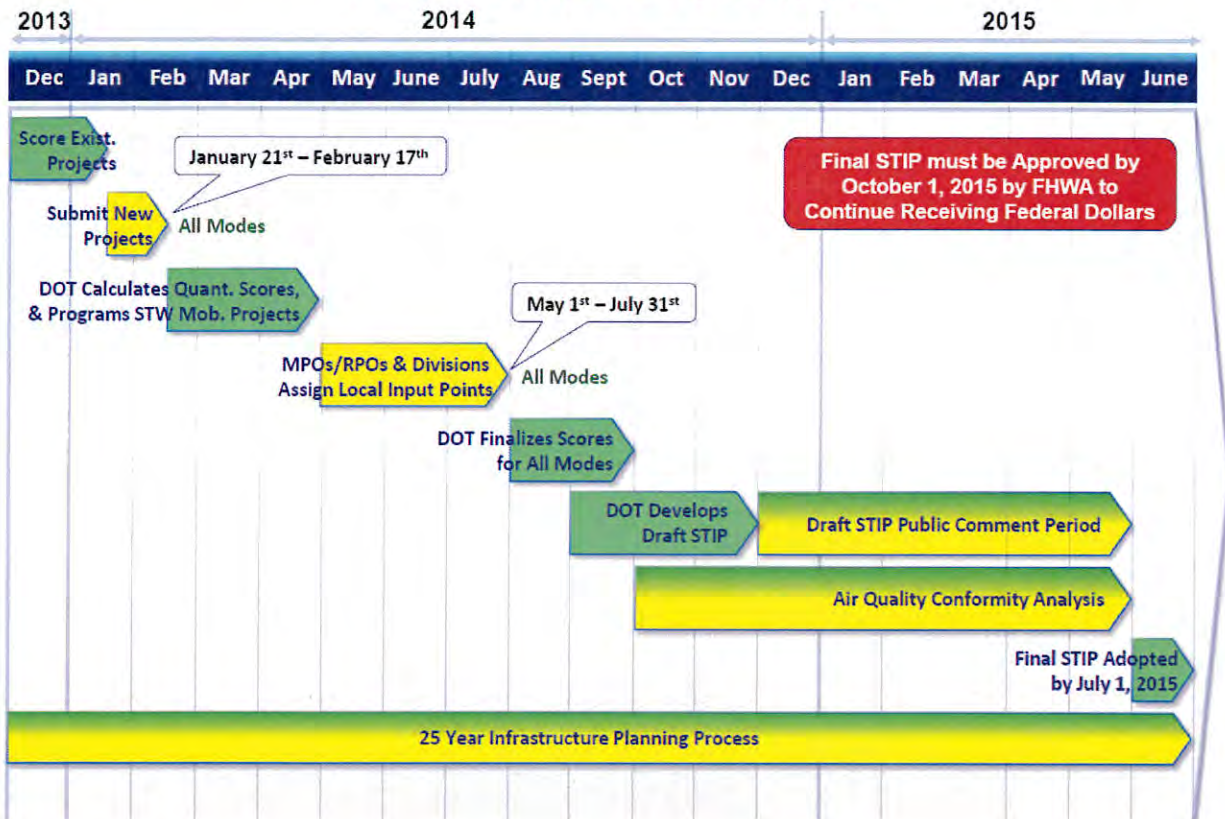
Agenda Item V

PTRPO Projects for SPOT 3.0 Submission

Background

The attached project submittal list includes existing projects and ones that will be submitted to the SPOT 3.0 Database between January 21 and February 17, 2014 for the Piedmont Triad RPO. The project information has been submitted at County public input workshops held in October and November. In addition projects also may have been submitted by a municipality or previously to NCDOT. These projects are not ranked or scored, but must be submitted in the above time frame for NCDOT to score the projects appropriately using the data driven criteria. There are still available slots for bicycle and pedestrian projects as well as another highway project. The full schedule is shown below:

Prioritization 3.0 Schedule



Action Requested

Consideration of the project list.

EXISTING PROPOSED HIGHWAY PROJECTS

SPOTID	Project Category	Specific Improvement Type	County	TIP #	Route Number	Route Name	From/Cross Street	To	Description
H090131-C	Statewide Mobility	1 - Widen Existing Roadway	Caswell	R-2560C	NC 87		SR 1159 (Parkdale Road) in Caswell County	NC 150 East of Williamsburg in Rockingham County	SR 1547 in Alamance County to US 29 in Reidsville. Widen to Multi-Lanes. Section C: SR 1159 (Parkdale Road) in Caswell County to NC 150 East of Williamsburg in Rockingham County.
H090140-A	Statewide Mobility	0 - Widen Existing Roadway and Construct Part on New Locations	Caswell	R-2575A	US 158		NC 86 West of Yanceyville	NC 86 Near Pleasant Grove	Widen to Multi-Lanes
H090153	Statewide Mobility	1 - Widen Existing Roadway	Caswell	R-2586	US 158		US 29 at NC 14	NC 86 West of Yanceyville	Widen to Multi-Lanes
H090229	Regional Impact	1 - Widen Existing Roadway	Caswell	R-3418	NC 86		US 158	Virginia State Line	US 158 to Virginia State Line. Widen to Multi-Lanes.
H090603	Regional Impact	1 - Widen Existing Roadway	Caswell		NC 119		US 158	NC 62 (Cloninger Drive)	from US 158 to New Location NC 62 Connector (See R-3105). Widen to Multi-Lanes. Add to Stip.
H090611	Regional Impact	16 - Modernize Roadway	Caswell		NC 150		US 158	NC 87	from US 158 in Caswell County to NC 87 in Rockingham. Widen Lanes, Pave Shoulders. Add to Stip.
H090695	Regional Impact	5 - Construct Roadway on New Location	Caswell			New Route	NC 62	NC 86	Two-Lane Connector on New Location from NC 62 South of Yanceyville City Limit to NC 86 East of Yanceyville City Limit.
H090023-A	Statewide Mobility	17 - Upgrade Freeway to Interstate Standards	Montgomery	I-4406A	I-73/74/US 220		North of US 220 Alternate	South of NC 211	Section A: North of US 220 Alternate to South of NC 211
H090023-B	Statewide Mobility	17 - Upgrade Freeway to Interstate Standards	Montgomery	I-4406B	I-73/74/US 220		South of NC 211	North of SR 1500 (Post office Road)	Section B: South of NC 211 to North of SR 1500 (Post office Road).

SPOTID	Project Category	Specific Improvement Type	County	TIP #	Route Number	Route Name	From/Cross Street	To	Description
H090023-C	Statewide Mobility	17 - Upgrade Freeway to Interstate Standards	Montgomery	I-4406C	I-73/74/US 220		North of SR 1500 (Post office Road)	North of NC 24/27	Section C: North of SR 1500 (Post office Road) to North of NC 24-27.
H090023-D	Statewide Mobility	17 - Upgrade Freeway to Interstate Standards	Montgomery	I-4406D	I-73/74/US 220		North of NC 24/27	North of SR 1002 (Spies Road)	Section D: North of NC 24/27 to North of SR 1002 (Spies Road).
H090023-E	Statewide Mobility	17 - Upgrade Freeway to Interstate Standards	Montgomery	I-4406E	I-73/74/US 220		North of SR 1002 (Spies Road)	North of US 220 Alternate	Section E: North of SR 1002 (Spies Road) to North of US 220 Alternate.
H090113	Statewide Mobility	1 - Widen Existing Roadway	Montgomery	R-2527	NC 24/27		NC 73	Troy Bypass	Widen to Multi-Lanes
H090114	Statewide Mobility	1 - Widen Existing Roadway	Montgomery	R-2528	NC 24/27		I-73/74/US 220	Carthage Bypass	Widen to Multi-Lanes
H090158-A	Regional Impact	1 - Widen Existing Roadway	Montgomery	R-2591	NC 211		US 220 East of Candor	SR 1241 near Seven Lakes	Widen to Multi-Lanes
H090598	Regional Impact	16 - Modernize Roadway	Montgomery		NC 109		NC 73 (Main Street)	NC 24/27	NC 73 in Mt. Gilead to NC 24-27 West of Troy. Widen Existing; Add Shoulders; install Turn Lanes at Traffic Generators and Signalization.
H090696	Regional Impact	16 - Modernize Roadway	Montgomery		NC 731		Pee Dee River	US 220 Business	Widen Existing Lanes; Add Paved Shoulders; Address Drainage Issues from Pee Dee River to US 220 Business.
H090739	Division Needs	5 - Construct Roadway on New Location	Montgomery			New Route	SR 1332 (Page Street)	NC 24/27 (Troy Bypass)	Two Lane Connector Between Troy Bypass and Page Street (SR 1332) in Troy to Accomodate Truck Traffic.
H112081	Division Needs	16 - Modernize Roadway	Montgomery		SR 1150	River Road	NC 24/27	NC 109	Wide Shoulders For Bicycle Route, Straighten Turns, Turn Lanes, Site Distance Improvement For Safety

SPOTID	Project Category	Specific Improvement Type	County	TIP #	Route Number	Route Name	From/Cross Street	To	Description
H090043	Statewide Mobility	1 - Widen Existing Roadway	Randolph	I-5105	I-73/74/US 220		South of US 220 Business	North of SR 2269 (Vision Drive)	South of US 220 Business/ SR 1138 (Dawson-Miller Road) to North of SR 2269 (Vision Drive). Geometric, Operational, and Safety Improvements.
H090061-CB	Statewide Mobility	1 - Widen Existing Roadway	Randolph	R-2220CB	US 64		Davidson County Line	SR 1409 (Lake Park Road)	Widen to Multi-Lanes
H090061-DA	Statewide Mobility	1 - Widen Existing Roadway	Randolph	R-2220DA	US 64		SR 1409 (Lake Park Road)	Proposed Asheboro Bypass	Widen to Multi-Lanes
H090061-DB	Statewide Mobility	1 - Widen Existing Roadway	Randolph	R-2220DB	US 64		Proposed Asheboro Bypass	NC 49	Widen to Multi-Lanes
H090061-E	Statewide Mobility	1 - Widen Existing Roadway	Randolph	R-2220E	US 64		NC 49		Reconstruct interchange
H090120-A	Statewide Mobility	1 - Widen Existing Roadway	Randolph	R-2535A	NC 49		Existing Four Lanes West of Farmer at SR 1174 (Waynick Meadow Road)	East of SR 1163 (tot Hill Farm Road)	SR 1174 West of Farmer to Proposed Asheboro Southern Bypass (R-2536) West of SR 1193. Widen to a Four Lane Divided Facility. Section A: Existing Four Lanes West of Farmer at SR 1174 (Waynick Meadow Road) to East of SR 1163 (tot Hill Farm Road).
H090120-B	Statewide Mobility	1 - Widen Existing Roadway	Randolph	R-2535B	NC 49		East of SR 1163 (Tot Hill Farm Road)	Proposed Asheboro Bypass West of SR 1193 (Old NC 49)	Widen to a Four Lane Divided Facility. Section B: East of SR 1163 (tot Hill Farm Road) to the Proposed Asheboro Bypass West of SR 1193 (Old NC 49).
H090256	Regional Impact	6 - Widen Existing Roadway and Construct Part on New Location	Randolph	R-3803	NC 49	Fayetteville Street	SR 2427(Kinro Road)	NC 49 (Swannanoa Street)	East Liberty Bypass, NC 49(Fayetteville Street) at SR 2427(Kinro Road) to NC 49 (Swannanoa Street). Two Lanes on Four Lane Right of Way, Part New Location.

SPOTID	Project Category	Specific Improvement Type	County	TIP #	Route Number	Route Name	From/Cross Street	To	Description
H090271	Division Needs	5 - Construct Roadway on New Location	Randolph	R-4065		New Route	SR 1950 (West Academy Street)	US 311 Near Sophia	SR 1950 (West Academy Street) to US 311 near Sophia. Multi-Lane Connector on New Location.
H090509	Regional Impact	16 - Modernize Roadway	Randolph	U-5005	US 220 Business		Proposed US 64 Bypass	US 64/NC 49	Proposed US 64 Bypass to US 64/NC 49. Upgrade Roadway, Address intersections and Other Safety Issues.
H090742	Regional Impact	16 - Modernize Roadway	Randolph		NC 705		I-73/74/US 220	US 220A	I-73/74 (US 220) to US 220 a in Seagrove. Improve Existing Two-Lane Cross Section to Curb and Gutter with Sidewalks and Bicycle Accomodations.
H111119	Regional Impact	1 - Widen Existing Roadway	Randolph		US 220 Business		US 311 Extension	SR 2123 Caudle Road	Widen Roadway to Four Lanes with a Median
H090131-DA	Statewide Mobility	1 - Widen Existing Roadway	Rockingham	R-2560DA	NC 87		NC 150 East of Williamsburg	SR 2594 (Holliday Loop Road)	SR 1547 in Alamance County to US 29 in Reidsville. Widen to Multi-Lanes. Section Da: NC 150 East of Williamsburg to SR 2594 (Holliday Loop Road).
H090228	Regional Impact	16 - Modernize Roadway	Rockingham	R-3414	NC 65/87		West of SR 2371 (Old County Home Road) in Wentworth	US 158-29 Business (Freeway Drive) in Reidsville	West of SR 2371 (Old County Home Road) in Wentworth to US 158-29 Business (Freeway Drive) in Reidsville. Upgrade Existing Roadway.
H090273	Regional Impact	1 - Widen Existing Roadway	Rockingham	R-4402	NC 14/87		NC 700/770 (Meadow Road) in Eden	Virginia State Line	NC 700/770 (Meadow Road) in Eden to the Virginia State Line. Widen to Multi-Lanes.
H090307	Regional Impact	8 - Improve Interchange	Rockingham	R-5015	US 311/NC 135		Future I-74/US 220		Widen Bridge on US 311/NC 135 Over Future I-74/US 220 and Upgrade interchange.
H090597	Regional Impact	1 - Widen Existing Roadway	Rockingham		NC 770		SR 1743 (Gant Road)	SR 1789 (industrial Drive)	SR 1743 (Gant Road) to SR 1789 (industrial Drive) in Eden. Widen to Multi-Lanes. Add to Stip.

PROPOSED BICYCLE PROJECT SUBMISSIONS

ID	Municipality	Improvement Type	Route Name	From	To	Description	NCDOT Division	Counties	Distance (mi)	Notes
1 (SPOT 2.0)	Yanceyville	Bicycle/Multiuse Facility	Senior Center Greenway Ext.	Senior Center on Firetower Road	Church Street	1 mile multi-use path connecting existing trails at Caswell Senior Center and Elementary School to Town of Yanceyville, following Firetower Road. Project includes improvements to facilitate non-motorized crossing at NC 86/US 158.	7	Caswell	1	Left message 12/5 with Robert Wilson
2 (2.0)	Biscoe	Pedestrian	NC 24/27	McCaskill Street/McCaskill I Street Extension	Food Lion/Foundary	Crosswalk and Pedestrian Refuge Island Improvements to facilitate crossing between Grady Foundary and Food Lion	8	Montgomery	n/a	Talked with Brooks 12/5 - Design Link has some designs, Ped Plan also calls for improvements
3	Biscoe	Bicycle/Multiuse Facility	Eastern Montgomery Middle School Greenway	Arthur Dr	Montgomery Middle and High School	Construct 10' wide multiuse trail connecting Biscoe residential area with Montgomery Middle and High school, construct trail in Railroad ROW	8	Montgomery	0.75	Submitted as SRTS to Division 8
4	Asheboro	Bicycle	Church St Loop	Church St Cooper St.	Albemarle and Walker Ave	Bicycle lanes	8	Randolph	2	Submitted by email 12/2/13
5	Asheboro	Pedestrian	NC 42 / Salisbury St	Elm Steet	Dublin Rd	Sidewalk improvements on both sides	8	Randolph	0.75	Submitted by email 12/2/13
6	Asheboro	Pedestrian	Old Liberty Road	Fayetteville Street	Central Falls	Improve 1 mile from Fayetteville Street to Central Falls Avenue. Install curb and gutter, sidewalks, streetscaping, and on-street bicycle accommodations. Request funding for design and construction.	8	Randolph	1	Submitted to Bike Ped in January 2013
7	Asheboro	Pedestrian	W. Bailey St	Burmil Rd	N. Asheboro School Rd	Install sidewalks on the south side of Bailey Street to connect with Balfour Elementary School	8	Randolph	0.3	Submitted as SRTS to Division 8 10/31/13
8	Randleman	Pedestrian	W. Academy St	HP St Roundabout	Hilliary St	Sidewalk improvements on north side, some existing	8	Randolph	0.75	Submitted as SRTS to Division 8 10/31/13
9 (2.0)	Randleman	Bicycle/Multiuse Facility	Deep River Trail Extension	US 220 Bus	SR 2119 (Naomi Road)	Construct 10' wide multiuse trail adjoining existing Deep River Trail for 1000'	8	Randolph	0.2	left message 12/5

NEW PROPOSED TRANSIT PROJECTS

County	Year	Type	Funding Source	Amount	Description
Randolph	FY 15	Vehicle Expansion	Section 5310 (Elderly Disabled)	\$127,200	Purchase expansion vehicles for SKAT service in Western Rockingham County
Randolph/ Montgomery	FY 15	Vehicle Expansion	Community Transportation Program Grant Request	TBD	Purchase expansion vehicles to support increased demand of services
Randolph/ Montgomery	FY 16	Vehicle Expansion	TBD	TBD	Purchase expansion vehicles to support increased demand of services
Randolph/ Montgomery	FY 17	Vehicle Expansion	TBD	TBD	Purchase expansion vehicles to support increased demand of services

**Montgomery County Airport - 43A
TRANSPORTATION IMPROVEMENT PROGRAM (TIP)
2015-2021 PROJECT LISTING**

Project	Description	Fiscal Year	Total Est. Cost
Runway 21 Obstruction Removal	Clear obstructions off end of Runway 21	2014	\$199,000
Runway Safety Area Slope Improvements	Improve slopes along the sides of the runway so they can be maintained	2015	\$619,000
Fuel Farm	Self service with credit card machine	2016	\$100,000
Perimeter Fencing	Fence perimeter of airport property	2017	\$443,000

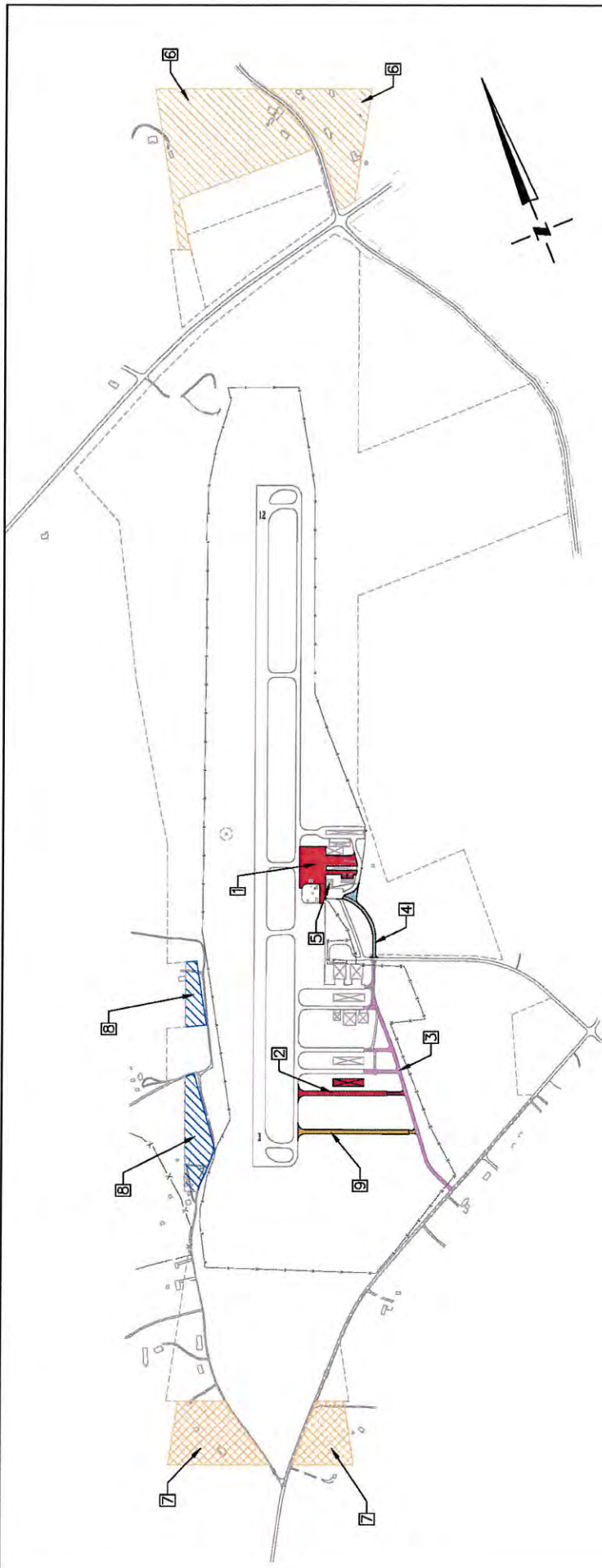
Total all improvements \$1,361,000.00

I CERTIFY THAT THE PROJECTS REQUESTED IN THIS 2015-2021 TIP SUBMISSION HAVE BEEN REVIEWED BY THE GOVERNING BOARD OF THE SPONSOR RESPONSIBLE FOR FUNDING THE LOCAL SHARE OF THE PROJECT AND THAT SAID BOARD HAS FORMALLY APPROVED THE SUBMISSION OF THESE REQUESTS FOR STATE AID TO AIRPORTS (AND THE STATE BLOCK GRANT PROGRAM WHERE APPLICABLE)

Signed _____

Date _____

Name & Title (print) _____



PROJECT DESCRIPTION

- 2014 1. APRON REHABILITATION
- 2014 2. HANGAR DEV. AREA TAXILANES & ACCESS ROAD (PHASE I—PAVING & T—HANGAR BUILDING)
- 2015 3. TAXILANE EXTENSION AND HANGAR ACCESS ROAD
- 2016 4. RELOCATE AIRPORT ENTRANCE ROAD
- 2017 5. TERMINAL BUILDING
- 2018 6. LAND ACQUISITION — RW 21 FUTURE APPROACH
- 2018 7. AVIGATION EASEMENT — RW 3 FUTURE APPROACH
- 2019 8. LAND ACQUISITION — BUILDING RESTRICTION LINE
- 2020 9. HANGAR DEV. AREA TAXILANES & ACCESS ROAD (PHASE II)



FISCAL YEAR 2014–2020 PROJECTS
 TRANSPORTATION IMPROVEMENT PROGRAM
 FOR THE
 ASHEBORO REGIONAL AIRPORT
 ASHEBORO, NORTH CAROLINA

WK DICKSON
 preliminary infrastructure consultants

DATE: 05/20/2013
 ASSESSOR: J. B. BROWN
 COUNTY: WYOMING
 PROJECT NO.: 13-001
 SHEET NO.: 1

Office Locations:
 Durham, NC 919-486-3300
 Raleigh, NC 919-384-3388
 South Carolina
 803-333-0330

ROCKINGHAM COUNTY / SHILOH AIRPORT
 CAPITAL IMPROVEMENT PLAN TIP
 2014-2017

Proj Request #	Year	Project Description	Rank	Estimated \$ for State Share	Estimated \$ for County Share	Design Status
2122	2014	EXTEND RUNWAY TO 5,500'	1	\$ 1,229,000.00	\$ 122,900.00	DESIGN NOT INITIATED/NOT FUNDED
2539	2014	RUNWAY STRENGTHENING TO 30,000# DWG	1	\$ 1,062,000.00	\$ 106,200.00	DESIGN NOT INITIATED/NOT FUNDED
2540	2014	PERIMETER SECURITY FENCING	1	\$ 213,000.00	\$ 21,300.00	DESIGN NOT INITIATED/NOT FUNDED
2945	2014	LAND ACQUISITION	1	\$ 450,000.00	\$ 45,000.00	DESIGN NOT INITIATED/NOT FUNDED
2541	2014	T-HANGAR TAXILANES/T-HANGARS	2	\$ 691,000.00	\$ 69,100.00	DESIGN NOT INITIATED/NOT FUNDED
		Total for 2014		\$ 3,645,000.00	\$ 364,500.00	
<hr/>						
2542	2015	TERMINAL APRON EXPANSION	3	\$ 2,265,000.00	\$ 226,500.00	DESIGN NOT INITIATED/NOT FUNDED
		Total for 2015		\$ 2,265,000.00	\$ 226,500.00	
<hr/>						
2544	2016	CORPORATE HANGAR DEVELOPMENT	4	\$ 1,787,000.00	\$ 178,700.00	DESIGN NOT INITIATED/NOT FUNDED
		Total for 2016		\$ 1,787,000.00	\$ 178,700.00	
<hr/>						
2545	2017	RUNWAY STRENGTHENING TO 60,000# DWG	5	\$ 1,242,000.00	\$ 124,200.00	DESIGN NOT INITIATED/NOT FUNDED
2546	2017	TAXIWAY STRENGTHENING TO 60,000# DWG	5	\$ 508,000.00	\$ 50,800.00	DESIGN NOT INITIATED/NOT FUNDED
		Total for 2017		\$ 1,750,000.00	\$ 175,000.00	
<hr/>						
		Total		\$ 9,447,000.00	\$ 944,700.00	



PIEDMONT TRIAD
RURAL PLANNING ORGANIZATION

A g e n d a I t e m

Agenda Item VI

2014 Meeting Dates

Background

The following are meeting dates scheduled for 2014, please mark your calendars accordingly. Meeting times may vary due to conflicts with the large conference room:

February 19

April 16

June 18

August 20

October 15

December 17

Action Requested

Adoption of the meeting dates.



Agenda Item

Agenda Item VII

Updated Funding Amounts for FY 2014 (Current Fiscal Year)

Background

The NCDOT Strategic Planning Office informed the Piedmont Triad RPO as well as other RPOs around the State that the Secretary has approved an increase in funding to assist with the Strategic Transportation Investments and the SPOT 3.0 process. The amount of grant funding for the current fiscal year has been increased by \$10,005, which includes a local match requirement increase of \$2,502 for a total increase of \$12,507. The following table shows how the local match requirement is distributed by population to our 4 RPO Counties.

**Piedmont Triad
Rural Transportation Planning Organization**

Local Match Amendments for FY 2013-14

RPO County	Percent of Total	DRAFT Total Funds	Rounded	\$ Change from Previous
Caswell	9.33%	\$ 2,338.32	\$ 2,338	233.00
Montgomery	10.99%	\$ 2,754.51	\$ 2,755	275.00
Randolph	42.78%	\$ 10,721.46	\$ 10,721	1,070.00
Rockingham	36.90%	\$ 9,248.71	\$ 9,249	924.00
	100.0%	\$ 25,063.00	\$ 25,063.00	2,502.00
Total Match		\$ 25,063.00		
Total Grant		\$ 100,250.00		
Total RPO		\$ 125,313.00		

Action Requested

Consideration of the funding amounts to be included in an update of the Planning Work Program



STATE OF NORTH CAROLINA
DEPARTMENT OF TRANSPORTATION

PAT MCCRORY
GOVERNOR

ANTHONY J. TATA
SECRETARY

October 21, 2013

MEMORANDUM

TO: RPOs

FROM: Susan Pullium *SP*
Director of Strategic Planning

SUBJECT: Increased Funding for FY 2014

The Transportation Planning Branch recently completed a review of the RPO funding process. Based on this review, the Secretary has approved changes to the current RPO funding formula. These changes include: increasing the minimum allocation to \$92,500, increasing the maximum allocation to \$115,625, and increasing the base amount to \$75,000 (see attached table).

These changes are in recognition of the increased responsibilities placed on RPOs by NCDOT since their inception in 2001. These additional responsibilities include: assisting the Department with public engagement processes, representing local constituents on merger teams in the project development process, and playing a bigger role in the project prioritization process.

The increased funds will be made available starting this fiscal year. Elina Zlotchenko will be providing guidance in the near future on how to modify your current work program to allocate these increased funds.

If you have any questions, please contact Mike Bruff, P.E. at 919-707-0901 or mbruff@ncdot.gov.

MAILING ADDRESS:
NC DEPARTMENT OF TRANSPORTATION
TRANSPORTATION PLANNING BRANCH
1554 MAIL SERVICE CENTER
RALEIGH NC 27699-1554



<https://connect.ncdot.gov/projects/planning/>

LOCATION:
TRANSPORTATION BUILDING
1 SOUTH WILMINGTON STREET
RALEIGH, NC 27601
Phone: 919-707-0900
Fax: 919-733-9794



PIEDMONT TRIAD
RURAL PLANNING ORGANIZATION

A g e n d a I t e m

Agenda Item VIII

County Prioritization Public Workshop Results

Background

County TIP Committee meetings were held in the 4 RPO counties to review existing projects and identify priority projects for each County. These workshops were not intended to rank projects, only provide recommendations for existing or new projects in all modes. The workshops were also an opportunity to educate the public on the new transportation legislation.

Randolph County October 29th – 30 Attendees

Rockingham County October 30th – 8 Attendees

Caswell County November 4th - 4 Attendees

Montgomery County November 6th – 9 Attendees

The meetings were moderately attended and feedback was received at each meeting. The project input is reflected in the project list under Agenda Item IV - PTRPO Projects for SPOT 3.0 Submission.

Action Requested

For your information.

DIVISION 7
Rockingham County
Fall 2013 Meeting Input
New Project Ideas

New Highway Projects

- Upgrade US 220 to Interstate standards in Rockingham County
- NC 87/65 at Wentworth St. and Sandy Cross Rd. Intersection upgrade to 1 – lane roundabout

Comments:

- Accelerate funding for the NC 68 and US 220 Connector

Bicycle and Pedestrian Projects

No new projects submitted

Comments:

- Rural roads such as US 158, Church Street Ext., Witty Road, NC 65 and Sandy Cross Road need lane widening and bicycle lanes
- All new construction to consider bicycle lanes and provide fund for pedestrian pathways
- High volume of bicycle traffic in SW Rockingham County along Witty Road, NC 65, US 158, Bethany Road, etc.

Rail Projects

No new projects submitted

Aviation Projects

See airport submittal list

Comments:

Provide funding for the extension of the Shiloh Airport runway to 5,500 feet

Transit Projects

Expansion vehicles to provide SKAT bus service in Western Rockingham County

**DIVISION 7
Caswell County
Fall 2013 Meeting Input
New Project Ideas**

New Highway Projects

- NC 86 – Provide passing lanes in key locations to improve travel times
- NC 62 – Provide passing lanes in key locations to improve travel times

Intersection Improvements

- NC 86/Park Spring Road Stoplight
- NC 86/Old NC 86 Stoplight
- NC 86/Walters Mill Road Turn lanes

Bicycle and Pedestrian Projects

No new projects submitted

Rail Projects

No new projects submitted

Aviation Projects

Not applicable

Transit Projects

No new projects submitted

Other Items

**DIVISION 8
Randolph County
Fall 2013 Meeting Input
New Project Ideas**

New Highway Projects

- NC 42 from Dublin Rd to US 64 – widen to 4 lane divided with sidewalks and align Dublin and Dublin Sq Rd intersection
- Old Liberty Rd. from US 220 Business to Deep River – widen to 12 foot lanes with paved shoulders
- Pineview Street from US 220 to N. Fayetteville Street – add turning lane to existing two lane roadway and widen lanes, add paved shoulder

Intersection Improvements

- US 220 Business/Presnell Street Intersection – Add left turn lanes on all corners of intersection
- US 220 Business from Presnell St. to Birkhead Dr. – intersection and safety improvements
- Zoo Parkway/Pine Grove Intersection- need a flashing light when car is at the intersection
- W. Academy Street/W. Naomi Street – install roundabout

Comments:

- Safety concern exit from US 220/I-73/74 to US 64 East – need flashing lights and stop sign
- Valley Farm Road was on a list to be paved, highly suggest it be kept on the list as a priority as two schools buses run up and down this road and there are blind spots
- Support the Liberty Bypass (SPOT H090256 and TIP R 3803) as a priority for Liberty

Bicycle and Pedestrian Projects

- Church St./Walker Ave./Albermarle Rd./Cooper St. loop – add bicycle accommodations
- NC 42 from Elm St. to Dublin Rd. – Install sidewalks on both sides of the street

Rail Projects

No new projects submitted

Aviation Projects

See airport submittal list

Transit Projects

Expansion vehicles for expanded service

**DIVISION 8
Montgomery County
Fall 2013 Meeting Input
New Project Ideas**

New Highway Projects

No new highway projects submitted

Comments:

NC 211 (SPOT H090158) is partially complete, the three sections need to be modified in the SPOT database

NC 109 (SPOT H090598) turn lanes are installed and shoulders have been added

Bicycle and Pedestrian Projects

No new projects submitted

Rail Projects

No new projects submitted

Comments:

The Aberdeen Carolina Western Railroad should be available for Statewide or Regional Impact funding, concerned that funds are ineligible on these rail corridors

Aviation Projects

Runway 21 Obstruction Removal

Runway Safety Area Slope Improvements

Fuel Farm – Self service credit card machine

Perimeter Fencing

Transit Projects

Expansion vehicles to keep up with demand