

GREEN GROWTH TOOLBOX



Brooke Massa

Piedmont Land Conservation Biologist

NC Wildlife Resources Commission



Linking Lands & Communities





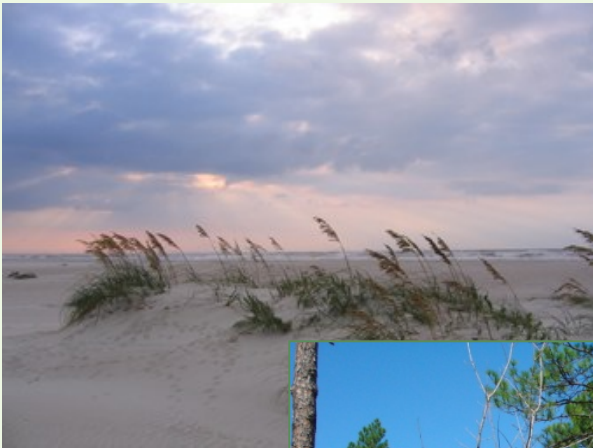
Overview

- ◎ What is Green Growth?
- ◎ Benefits of Green Growth
- ◎ Green Growth Toolbox
- ◎ Case studies
- ◎ Potential applications in the Eden area



What is Green Growth?

Conserving **priority wildlife habitat** while building homes, businesses & shopping centers





Nature-friendly planning

Green Growth Pays Dividends



Top Ten Benefits of Green Growth

- 1. Better health all around*
- 2. Economic returns*
- 3. Environmental safeguards*
- 4. Avoid environmental conflicts*
- 5. Attract new economy businesses*
- 6. Increase prosperity*
- 7. Generate tourist income*
- 8. Reduce costs to taxpayers and local governments*
- 9. Respond to public demand*
- 10. Improve quality of life*



What is the Green Growth Toolbox?

- Handbook
- Conservation data and GIS maps
(Conservation Planning Tool)
- Training workshops
- Technical assistance
- www.ncwildlife.org/greengrowth



Marbled Salamander



Prothonotary Warbler



Box Turtle



Chestnut-sided Warbler

Steps to Green Growth

Land Use Planning

- Identify natural resources in the community
- Define goals and objectives related to natural resource protection

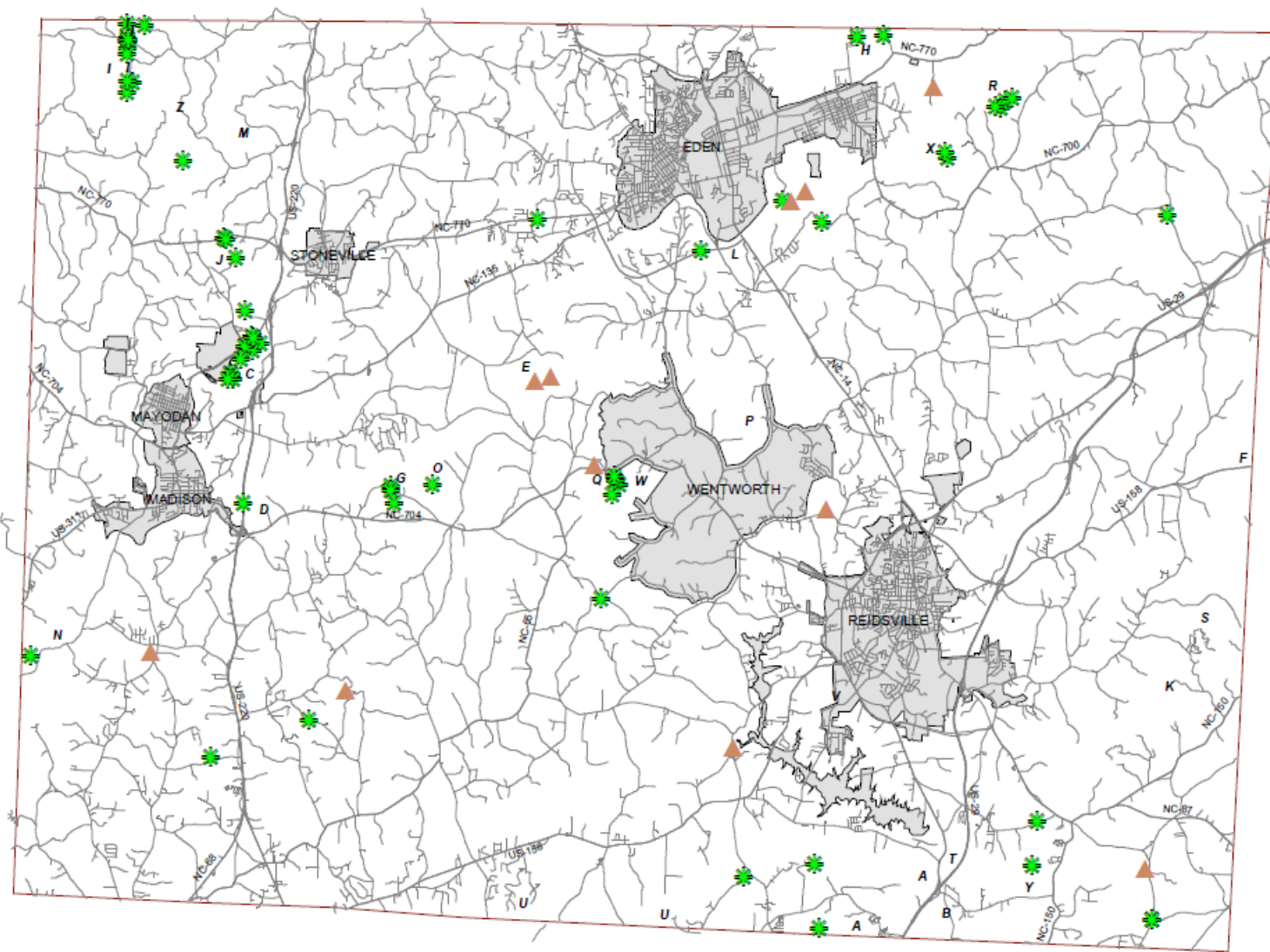
Land Use Policy

- Create ordinances or voluntary incentives to help your community reach its goals

Habitat Management



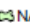

- Utilize best practices to ensure long-term protection of natural resources on protected lands

Using Conservation Data in: Visioning and Plan-Making



MAP 13 A

- A. Banaja Alluvial Forest and Creek Wetlands 226.76 ac
- B. Candy Creek Beaver Pond 21.17 ac
- C. Cedar Mountain 151.83 ac
- D. Collins Bridge Bluffs 48.60 ac
- E. Dan River Aquatic Habitat 567.71 ac
- F. Hoger's Creek Wetland and Slopes 457.89 ac
- G. Jacobs Creek Slopes 14.51 ac
- H. Leaksville Loom Forests 163.02 ac
- I. Mayo River Argill Mill Bluffs 113.09 ac
- J. Mayo River Aquatic Habitat 203.85 ac
- K. McKinney Road Forest 37.61 ac
- L. Mabane Bridge Slope 18.63 ac
- M. Paw Paw Creek Tributaries and Dike 123.27 ac
- N. Pine Hill Slopes 130.37 ac
- O. Pleasantville Basic Forest 137.01 ac
- P. Roach Creek Slope 48.50 ac
- Q. Rock House Creek Slopes 65.68 ac
- R. Rocky Branch Conglomerate Exposure 60.13 ac
- S. Tate Road Forest 269.97 ac
- T. Troublesome Creek Marsh 92.83 ac
- U. Upper Haver River Floodplain and Slopes 655.94 ac
- V. Werf Allfield Forest 67.56 ac
- W. Wentworth Woods 123.24 ac
- X. Wide Mouth Creek Conglomerate Exposure 24.10 ac
- Y. Williamsburg Alluvial Forest 150.20 ac
- Z. Whitler's Overlook 185.83 ac
- Total Acres "4,396.43"

-  HISTORIC SITES
-  NATURAL HERITAGE ELEMENTS
-  NATURAL HERITAGE AREAS
-  MUNICIPALITY

ROCKINGHAM COUNTY DEVELOPMENT CONSTRAINTS NATURAL HERITAGE AND HISTORIC SITES

NOT ALL HISTORIC SITES SHOWN DUE TO ADDRESS RESTRICTIONS

Develop Goals & Objectives specific to conservation

Knowing the general location of these areas can be valuable in guiding the location of future development in order to balance the impacts of economic development with protection of the environment.

A Land Use Plan for Managing Growth: Rockingham County, North Carolina 14



Moore County Land Use Plan

Benefits of Open Space Conservation



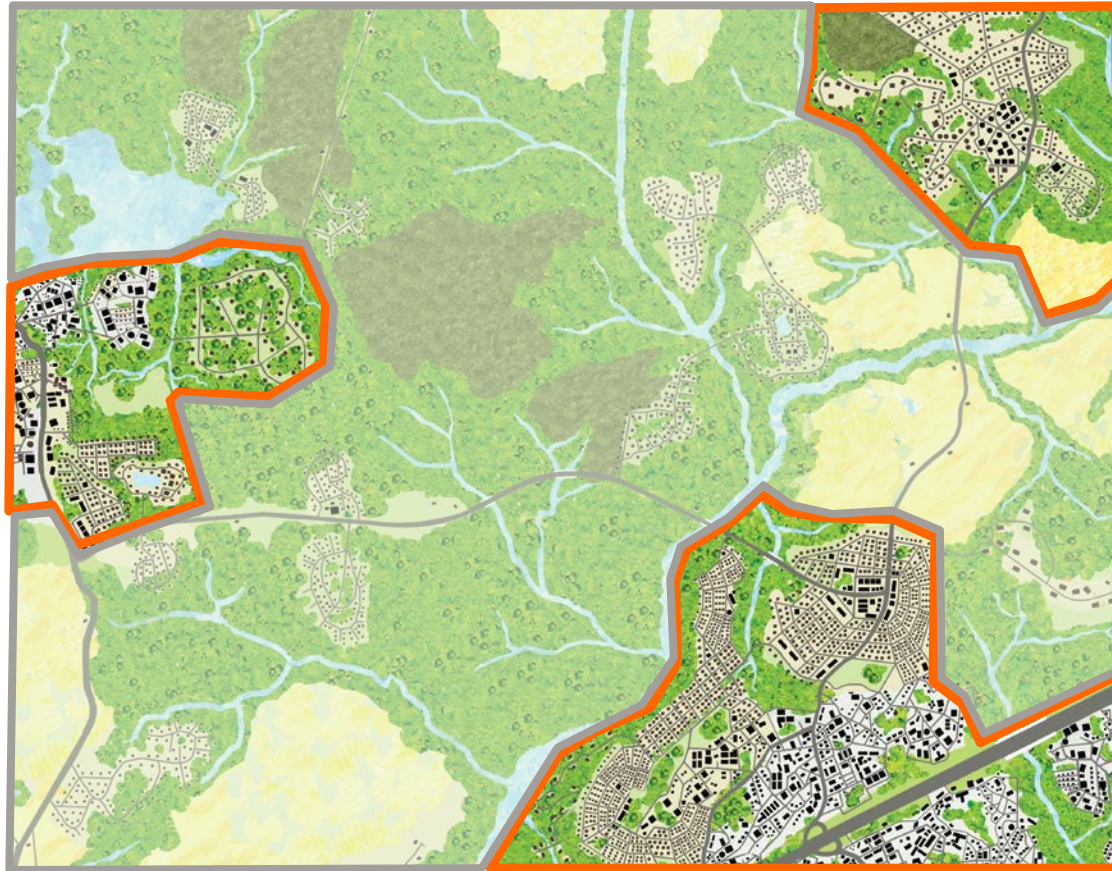
- increases property values
- improves and maintains ecosystem services
- reduces the implementation of costly regulation

Moore County Land Use Plan

Action Items

- ◎ Utilize existing policies, such as the Working Lands Protection Plan and the **Green Growth Toolbox**, to guide conservation of rural lands.
- ◎ Develop an **Open Space Conservation Plan and Policy**
- ◎ Identify, map and preserve the County's historical, natural, and cultural assets **utilizing all available conservation data.**

Using Conservation Data in: Greening Ordinances



Graphic developed by Echo 3 Creative, Star NC

- ⊙ Habitat conservation measures
- ⊙ Zoning districts
- ⊙ Density
- ⊙ Encourage clustering
- ⊙ Stream buffers
- ⊙ Habitat connectivity
- ⊙ Example ordinances from NC & US



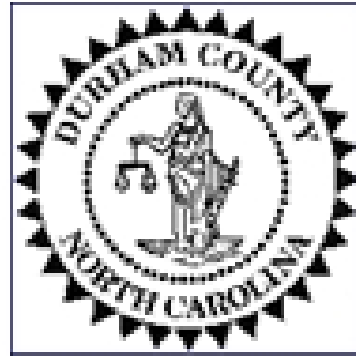
Urban Service Area

HB 74

AN ACT TO IMPROVE AND STREAMLINE THE REGULATORY PROCESS IN ORDER TO STIMULATE JOB CREATION, TO ELIMINATE UNNECESSARY REGULATION, TO MAKE VARIOUS OTHER STATUTORY CHANGES, AND TO AMEND CERTAIN ENVIRONMENTAL AND NATURAL RESOURCES LAWS.

SECTION 10.2(a) Notwithstanding any other provision of law and except as authorized by this section, a city or county may not enact an ordinance that regulates a field that is also regulated by a State or federal statute enforced by an environmental agency or that regulates a field that is also regulated by a rule adopted by an environmental agency. A city or county may enact an ordinance that regulates a field that is also regulated by a State or federal statute enforced by an environmental agency or that regulates a field that is also regulated by a rule adopted by an environmental agency if the ordinance is approved by a unanimous vote of the members present and voting.

Using Conservation Data in: Greening Ordinances



- ◎ **Durham Inventory Site Protection Standards**
 - Encourages protection of conservation sites using various ordinances, such as Open Space and Tree Protection
 - Based on Natural Heritage Inventory Data

Using Conservation Data in: Greening Ordinances

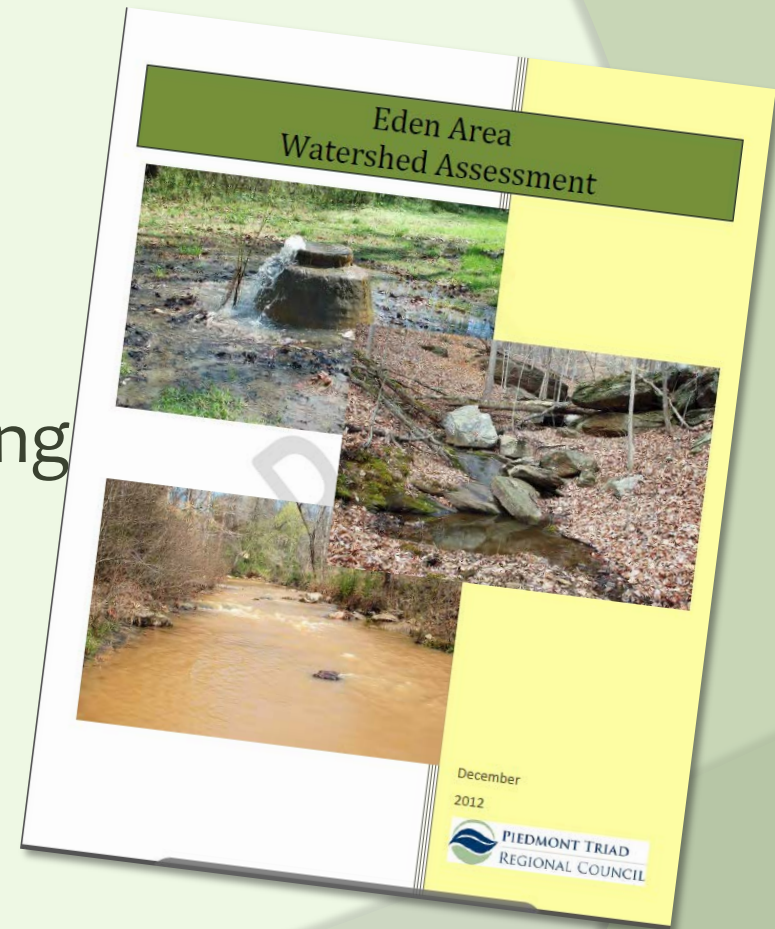


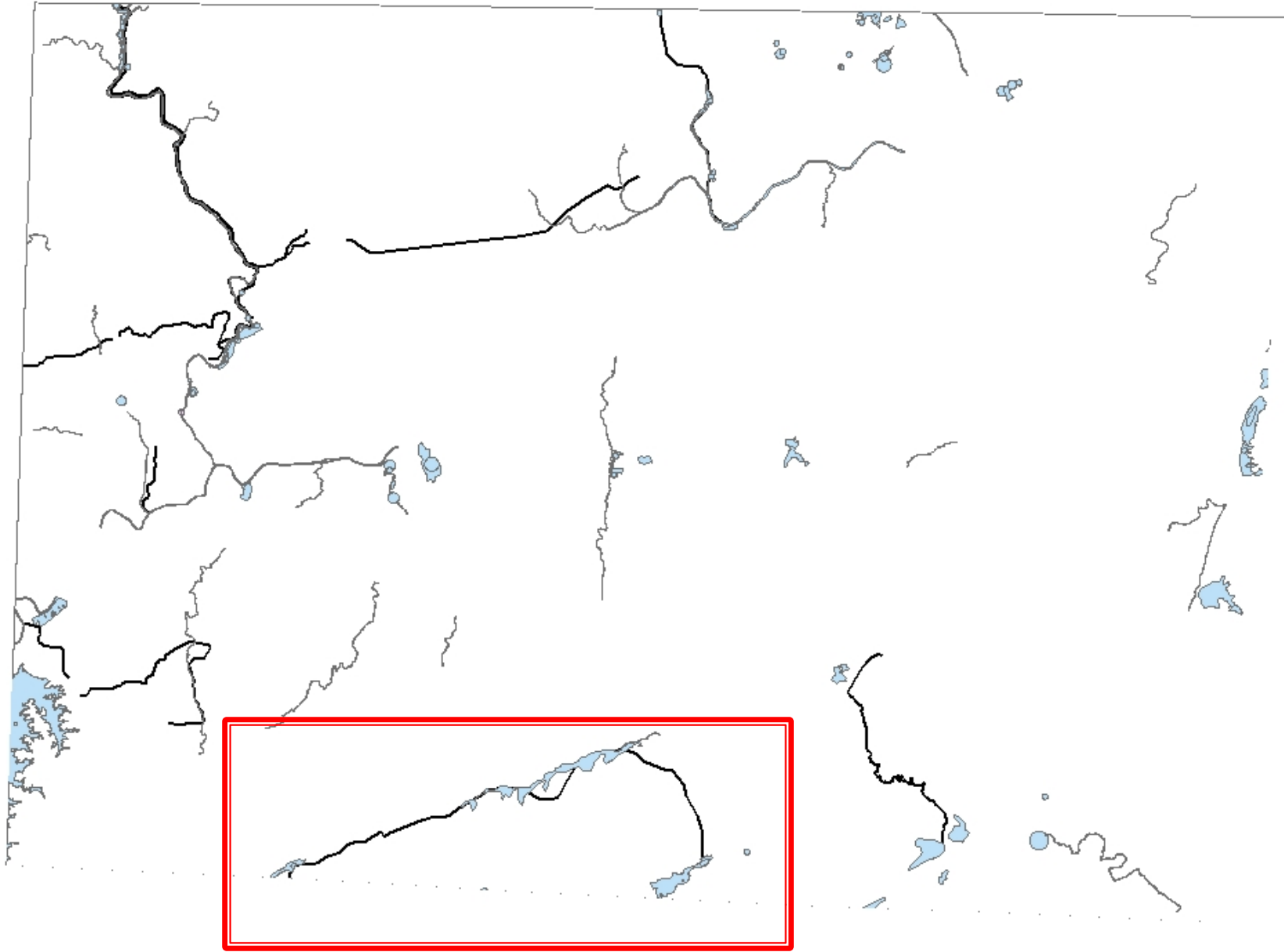
- ◎ **Randolph County Cluster Subdivision Overlay**
 - Requires 50% set-aside for natural areas
 - Rural and secondary growth areas
 - Density bonuses available
 - Encourages developments that protect sensitive areas

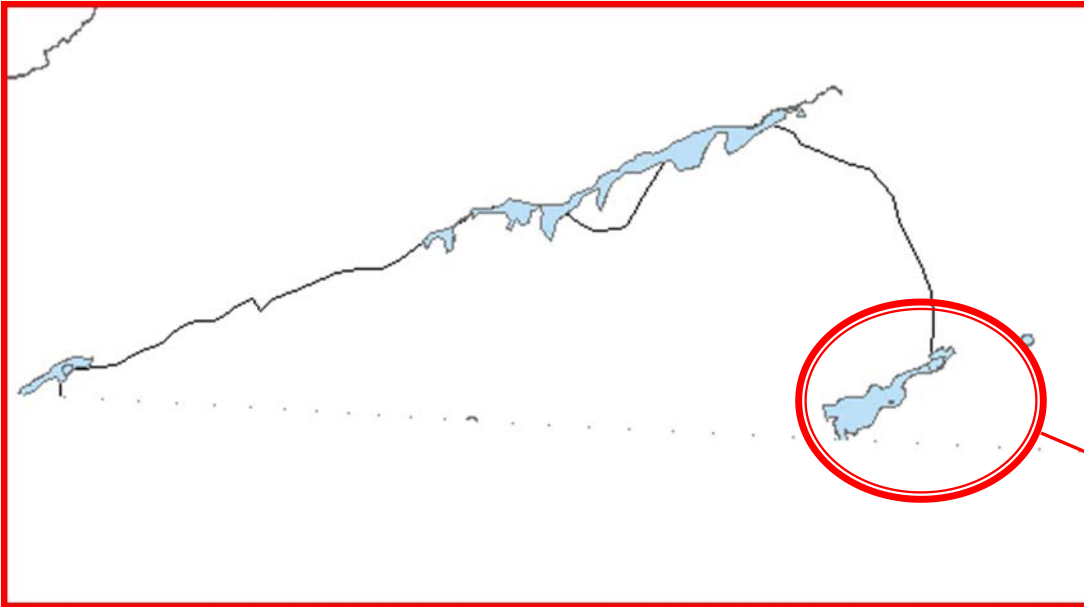
Eden Area Watershed

◎ The Big Question

- Adoption of plan
- Increase access to conservation data and training resources
 - DRBA Trails







Rare Aquatics



Nature-friendly planning

Summary

- ◎ Green Growth Toolbox is a resource for you!
 - Conservation data
 - Case studies
 - Technical assistance

www.ncwildlife.org/greengrowth



QUESTIONS?



Funding for the Green Growth Toolbox provided by State Wildlife Grants, the Wildlife Conservation Society-Doris Duke Charitable Foundation, and the NC Non-Game Tax Checkoff Fund