



Technical Coordinating Committee (TCC) Meeting
Tuesday, June 16th, 2015
12:00 p.m.
PTRC Office, Kernersville

AGENDA

Welcome and Ethics Statement

Michael Poston

Action Items

- | | | |
|------|---------------------------------------------|--------------------|
| I. | TCC Minutes – April 14 th , 2015 | Michael Poston |
| II. | FY 15-16 Budget Amendment | Elizabeth Jernigan |
| III. | CMAQ Resolution of Support | Elizabeth Jernigan |

Discussion Items

- | | | |
|-----|---------------------------|-----------|
| IV. | SPOT 4.0 Workgroup Update | Jesse Day |
|-----|---------------------------|-----------|

Informational Items

- | | | |
|-------|----------------------------------|--------------------|
| V. | NC Mountains to Sea Trail Update | Kate Dixon |
| VI. | Division 9 Updates | Diane Hampton |
| VII. | Division 11 Updates | Dean Ledbetter |
| VIII. | TPB Update | Vernia Wilson |
| IX. | RPO Update | Elizabeth Jernigan |

New Business

TCC Members

Adjournment

Michael Poston

Next Meeting
Tuesday, August 18th, 2015, Yadkin County



Agenda Item

Agenda Item I

TCC Meeting Minutes from April 1th, 2015

Background

The minutes from the meeting are attached.

Action Requested

Consideration of the minutes



Technical Coordinating Committee (TCC) Meeting
Tuesday, April 14th, 2015
12:00 p.m.
The Pilot Center

MINUTES

Attendance

John Rhyne, NCDOT –Div 9	Scott Bufkin, Jonesville
David Sudderth, Stokes County	Michael Poston, Yadkin County
Andrew Meadwell, Davie County	Dean Ledbetter, NCDOT – Div 11
Michael Poston, Yadkin County	Lisa Hughes, Yadkin County
George Crater, Elkin	Elizabeth Jernigan, PTRC
Andy Goodall, Mt. Airy	Jesse Day, PTRC
Homer Dearmin, King	

Welcome and Ethics Statement

George Crater read the ethics statement. Nobody had a conflict of interest.

Action Items

I. *TCC Minutes – December 16, 2014*

George Crater asked if committee members had a chance to review the minutes from the last meeting. Andrew Meadwell made a motion to approve the minutes. Michael Poston seconded the motion. The minutes were approved.

II. *2015 Officers*

Since the February TCC meeting was cancelled, election of officers was pushed to the April meeting. Andrew Meadwell made a motion for Michael Poston as Chair. George Crater seconded the motion. All were in favor. George Crater nominated Kim Bates as Vice Chair. The motion was seconded by Andrew Meadwell. All were in favor.

III. *Stokes County Connector*

Elizabeth Jernigan requested the TCC recommend removing the Stokes County Connector, TIP project R-3823, from the Winston-Salem Urban Area MPO 2040 Metropolitan Transportation Plan. The project received low scores in the STI process and was originally proposed under the assumption a more vibrant economy would increase travel demand between King and Walnut Cove. David Sudderth made a motion to recommend the TAC to endorse removing the project from the Winston-Salem Urban Area MPO 2040 Metropolitan Transportation Plan. Andrew Meadwell seconded the motion. All were in favor.

IV. *PWP FY 14-15 Amendment*

Elizabeth Jernigan requested the TCC recommend amending the PWP to move \$7,500 from “Comprehensive Transportation Plan Development” to “General Transportation Planning” where it will be used for the streetscape program. She also requested an amendment to “Miscellaneous Expenses – Administration” to include Google SketchUp to aid in the development of the streetscape program. There were no changes to the budgeted amount. Andrew Meadwell made a motion to approve the amendment. George Crater seconded the motion. All were in favor.

V. *PWP FY 15-16 and 5-Year Calendar*

Elizabeth Jernigan updated the TCC on the FY 15-16 PWP including a continuation of the Downtown Streetscape Assessment program, an update to the Environmental Justice Scan, Comprehensive Safety Planning and other reoccurring items such as data collection, planning, support, census mapping, administration and other planning items. The NWPRPO will also support the Stokes County Greenway Corridor Study and Stokes County CTP. Scott Buffkin made a motion to approve the PWP and 5-year Calendar and Andrew Meadwell seconded the motion. All were in favor.

VI. *NWPRPO Dues*

Elizabeth Jernigan requested the TCC recommend adopting the FY 2015-16 budget. Attendees discussed the layout of the invoice and suggested PTRC look at a less confusing template. It was also advised to investigate the discrepancy between the NWPRPO dues and the total amount required by NCDOT as match. David Sudderth made a motion to approve the budget. Michael Poston seconded the motion. All were in favor.

Discussion Items

VII. *SPOT 4.0 Workgroup Update*

Jesse Day provided an overview of the STIP process and the SPOT 4.0 Workgroup. The workgroup is charged with coming up with criteria for TIP Prioritization and making recommendations to the board of transportation. Recent decisions involve finalizing criteria for aviation, rail public transit and bike/ped.

Informational Items

VIII. *Division 9 Updates*

John Rhyne updated the TCC on the progress of projects in Division 9.

IX. *Division 11 Updates*

Dean Ledbetter updated the TCC on the progress of projects in Division 11.

X. *TPB Update*

Vernia Wilson was sick and unable to attend.

XI. *RPO Update*

Elizabeth Jernigan updated members on the Streetscape Assessment Program.

New Business

TCC members discussed how the NC Mountains to Sea Trail will impact their communities. Elizabeth Jernigan said she would reach out to the MST Coordinator and

see if she could present at the June meeting. Members also expressed concern for fading sign and sign placement directing visitors to Hanging Rock and Pilot Mountain State Parks.

Adjournment

George Crater asked for a motion to adjourn. Michael Poston made the motion and David Sudderth seconded the motion. The next meeting is scheduled for Tuesday, April 16th, 2015 at 12pm in Kernersville.

Michael Poston, Chair
Transportation Coordinating Committee

Elizabeth Jernigan, Secretary
Transportation Coordinating Committee



Agenda Item

Agenda Item III

CMAQ Resolution of Support

Background

NWPRPO is eligible to submit grant applications for organizations wishing to implement projects that improve air quality in Davie County. NWPRPO is working with IdleAir to submit an application to provide advanced truck stop electricification stations for long-haul truckers. In order for applications to be eligible, the TAC must endorse projects.

Action Requested

Recommend adopting a resolution of support for CMAQ projects.

**NORTHWEST PIEDMONT RURAL PLANNING ORGANIZATION
RESOLUTION ENDORSING CANDIDATE CMAQ PROJECT PROPOSALS**

A motion was made by _____ and seconded by _____ for the adoption of the following resolution and upon being put to a vote was duly adopted.

WHEREAS, the Safe, Accountable, Flexible, Efficient Transportation Equity Act: A Legacy for Users (SAFETEA) (Public Law 109-59, August 10, 2005) continues the Congestion Mitigation and Air Quality Improvement Program (CMAQ) (23 U.S.C. § 149); and

WHEREAS, CMAQ is a Federal program that funds transportation projects and programs in air quality nonattainment and maintenance areas to help achieve and maintain national standards for pollutants; and

WHEREAS, the North Carolina Department of Transportation (NCDOT) administers the CMAQ program on behalf of non-attainment and maintenance areas within North Carolina; and

WHEREAS, the Northwest Piedmont Rural Planning Organization has administered a CMAQ project selection process among local area jurisdictions in air quality non-attainment and maintenance counties; and

WHEREAS, the resulting candidate project proposals meet the requirements of CMAQ and the guidelines established by NCDOT to administer the program;

NOW THEREFORE, be it resolved that by the Northwest Piedmont Rural Planning Organization endorses the attached listing of proposed CMAQ candidate projects provided here on this, the ____ day of _____, 20__.

I, _____, TAC Chair, do hereby certify that the above is a true and correct copy of an excerpt from the minutes of a meeting of the TAC duly held on this, the ____ day of _____, 20__.

Chairman, Transportation Advisory Committee

Secretary, Transportation Advisory Committee

Agenda Item IV

SPOT 4.0 Workgroup Update

Background

The P4.0 Workgroup concluded on May 18th with the recommendations on changes to the Strategic Prioritization Process for Prioritization 4.0. These recommendations were presented to the Board of Transportation on June 4th with approval anticipated in July.

Projects to be Retained or Removed from the Database in the new Prioritization Process (P4.0)

The following types of projects will automatically carry-forward from the P3.0 database to the P4.0 database:

- Projects that are programmed in years 6-10 of the Final STIP (projects that are programmed in years 1-5 do not need to carry forward because they will not need to go through STI again)
- “Siblings” of programmed projects (e.g. Section A of the project was funded in the STIP, so Sections B and C will carry forward for consideration in P4.0)
- Projects with a completed NEPA document, or that had project planning actively underway as of December 31, 2014

Any project that received any amount of local input points in P3.0 (in either regional or division category, from either MPO/RPO or NCDOT Division)

Any project from P3.0 that does not meet one of the criteria above for automatic carry-over will be placed in a “holding tank” within SPOT Online. If the RPO wishes to resubmit one of these projects (subject to the limitations discussed below on the number of new submittals), I will be able to select it from the holding tank so that the project information does not have to be completely re-entered from scratch.

This process will apply to all modes..

A draft spreadsheet is attached showing the list of projects in the NWPRPO that would carry-forward or be removed based on these criteria. Please note that this list is still draft/subject to change if there are changes between the draft STIP and the final STIP, and subject to a double-check of which projects will meet the NEPA criterion. It is also time to consider proposing any new projects that have never been submitted.

Agenda Item

Number of New Project Submittals

Each MPO/RPO is allowed 10 new submittals, plus 1 for each 100,000 in population (rounded to nearest), up to a max of 20. So, for example, an RPO with a population of 200,000 would be allowed to submit 12 (10 + 2) new projects. This is the same method as in P3.0.. The table below shows the number allowed for each RPO:

Albemarle RPO	12	Mid Carolina RPO	12
Cape Fear RPO	11	Mid East RPO	11
Down East RPO	12	Northwest Piedmont RPO	12
Eastern Carolina RPO	12	Peanut Belt RPO	11
High Country RPO	12	Piedmont Triad RPO	13
Isothermal RPO	11	Rocky River RPO	11
Kerr-Tar RPO	12	Southwestern RPO	11
Land of Sky RPO	11	Triangle Area RPO	12
Lumber River RPO	12	Upper Coastal Plain RPO	12

Please note that you will be allowed to submit up to this number of projects within *each mode* – in other words, if you are allowed to submit 11 projects, then you are allowed 11 highway projects, 11 bike/ped projects, 11 aviation projects, etc.

The NCDOT Division Engineers will each be allowed to submit up to 7 new projects.

Project Modifications

You will be allowed to modify existing projects within the “carry-over” list without impacting your number of new submittals. For example, if you had a large project that was being automatically carried-forward from the P3.0 database and wanted to break it into three smaller segments, you could do that without having it count against your number of new submittals.

Number of Local Input Points

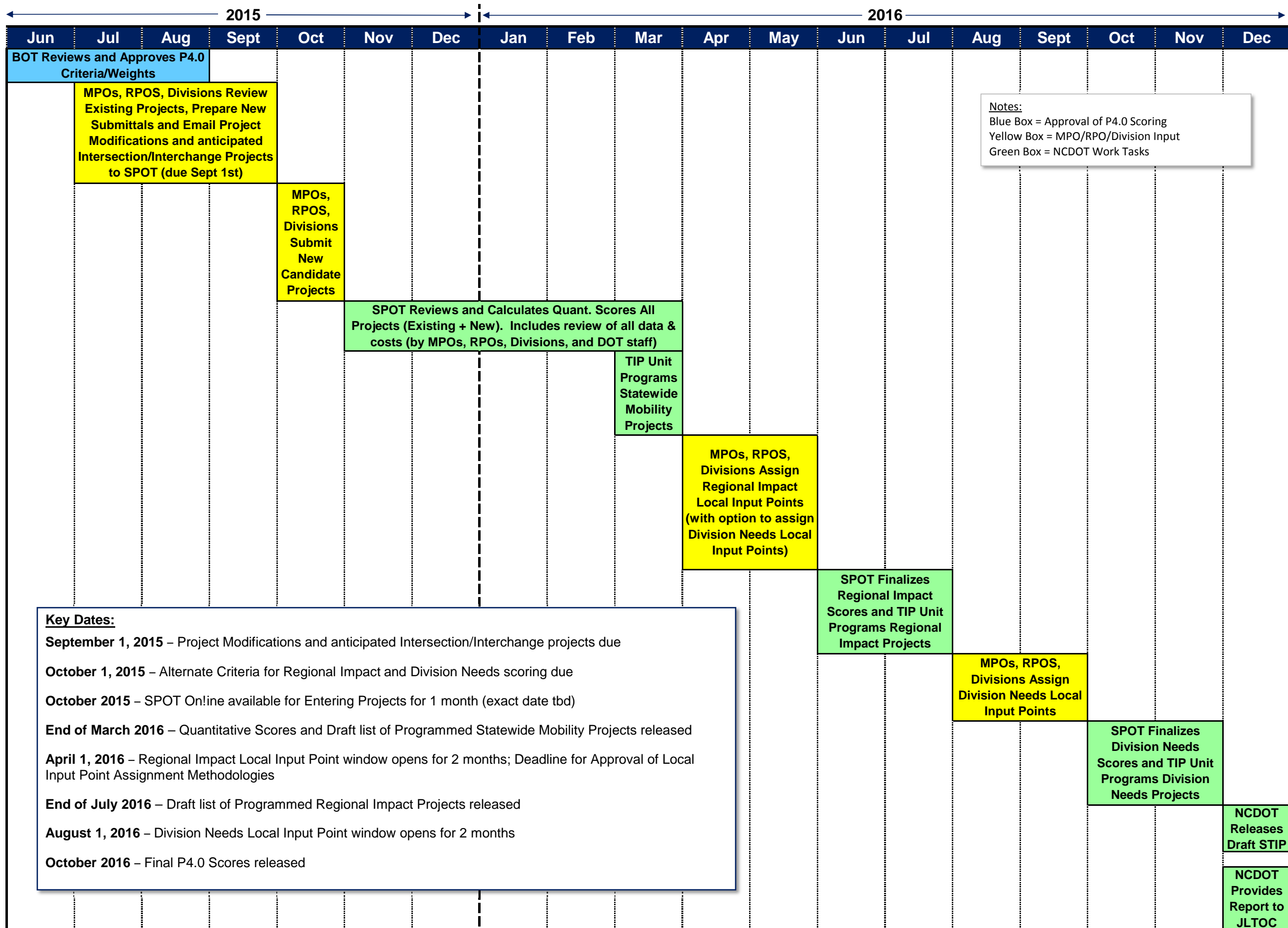
Each MPO, RPO, and Division receives a minimum of 1000 points, plus an additional 100 points per 50,000 population (rounded to nearest). This is the same as in P3.0. **The NWPRPO will be allowed to assign 1300 points.**

You will have the same number of points to assign in both the regional and division categories (e.g. if your RPO has 1100 points, you can assign 1100 in the regional assignment and 1100 in the division assignment).

Action Requested

Please review attached project list and timeline.

Prioritization 4.0 Schedule



SPOT ID	Mode	Project Category	TIP	Route / Facility Name	From / Cross Street	To	Description	Specific Improvement Type	Cost to NCDOT	STATEWIDE MOBILITY Quantitative / Total Score (Out of 100)	REGIONAL IMPACT Total Score (out of 100)	DIVISION NEEDS Total Score (out of 100)	Construction Cost	Right-Of-Way Cost	Utilities Cost	Actual Project Cost	Other Funds	Cost to NCDOT	Amount Programmed (16-25)	Other Funds Source	Fully Funded in Statewide Mobility Category	Funding Category	ROW SCHEDULE CONSTR SCHEDULE	Highway / Non-Highway	Status for P4.0	Sibling Project?	Is at Least One Sibling Programmed?	Family #	P3.0 Local Input Points	Completed NEPA	
NORTHWEST PIEDMONT RPO																															
Projects Funded in Draft STIP Years 1-5 (do not need to go through P4.0)																															
H141044	Highway	Division Needs	R-5730	SR-1605 Old US 421	SR 1146 (Shacktown Road)	SR 1711 (Speer Bridge Road)	Construct new roadway to realign SR 1605 (Old US 421) with SR 1711 (Speer Bridge Road) and construct a roundabout at the intersection with SR 1146 (Shacktown Road).	5 - Construct Roadway on New Location	\$ 31,443,000	N/A	N/A	51.85	\$ 25,628,000	\$ 5,192,000	\$ 623,000	\$ 31,443,000		\$ 31,443,000	\$ 31,400,000		0	DIVISION	20 22	Highway	Programmed and Committed (Yrs 1-5)					Yes	
H141629	Highway	Regional Impact	R-5714	US-601	US 52	SR 1365 (Forrest Drive)	Upgrade intersection of US 601 and US 52; Conduct a corridor study to determine the best treatment for the corridor between US 52 and Forrest Drive; Analyze the potential benefits of the original CTP recommendation to convert the existing five-lane major thoroughfare into a four-lane divided boulevard with a raised median and turn bays at major intersections	11 - Access Management	\$ 6,182,000	N/A	57.36	71.46	\$ 4,284,000	\$ 1,695,000	\$ 203,000	\$ 6,182,000		\$ 6,182,000	\$ 6,200,000		0	REGIONAL	20 22	Highway	Programmed and Committed (Yrs 1-5)					Yes	
H142039	Highway	Regional Impact	U-5809	US-601 State Street	US 421	SR 1146 (Lee Avenue)	Construct median and roundabouts.	11 - Access Management	\$ 10,270,000	N/A	48.45	65.08	\$ 8,590,000	\$ 1,500,000	\$ 180,000	\$ 10,270,000		\$ 10,270,000	\$ 10,300,000		0	DIVISION	19 21	Highway	Programmed and Committed (Yrs 1-5)					Yes	
H142225	Highway	Regional Impact	R-5728	US-601	Salisbury Street		Install a new 90 degree intersection and close the end of Salisbury Street (Former SPOTID: H141405)	10 - Improve Intersection	\$ 2,325,000	N/A	54.92	68.11	\$ 1,875,000	\$ 450,000	\$ -	\$ 2,325,000		\$ 2,325,000	\$ 2,325,000		0	DIVISION	17 18	Highway	Programmed and Committed (Yrs 1-5)					Yes	
Projects that Carry Forward from P3.0 to P4.0 Database																															
B141944	BikeandPed	Division Needs	0	US 158	SR 1600 (Milling Road)	Dogwood Lane	Widen paved shoulders to 4' along US 158 from SR 1600 (Milling Road) to Dogwood Lane	3. Add or widen paved shoulder	\$ 494,500	N/A	N/A	27.93	\$ 346,150	\$ -	\$ -	\$ 494,500	\$ -	\$ 494,500	0					Non-Highway	P3.0 Local Input Points					Yes	
H090022	Highway	Statewide Mobility		I-74 , US-52	NC 65 in Winston-Salem	I-74 in Surry County	NC 65 in Winston-Salem to I-74 in Surry County. Upgrade to interstate Standards	17 - Upgrade Freeway to Interstate Standards	\$ 27,474,000	21.56	25.87	14.01	\$ 27,474,000	\$ -	\$ -	\$ 27,474,000		\$ 27,474,000		0				Highway	P3.0 Local Input Points					Yes	
H090656	Highway	Regional Impact		NC-65	NC 8	US 311 in Walnut Cove	Widen to 2 - 12 Foot Lanes	16 - Modernize Roadway	\$ 8,892,000	N/A	26.50	33.12	\$ 8,892,000	\$ -	\$ -	\$ 8,892,000		\$ 8,892,000		0				Highway	P3.0 Local Input Points					Yes	
H140443	Highway	Statewide Mobility		I-40	US 601	NC 801	Add lanes to I-40	1 - Widen Existing Roadway	\$ 87,526,000	26.50	31.02	15.65	\$ 87,526,000	\$ -	\$ -	\$ 87,526,000		\$ 87,526,000		0				Highway	P3.0 Local Input Points					Yes	
H090241-B	Highway	Regional Impact	R-3602B	US-64	Davie County Line	US 52 in Lexington	US 601 South of Mocksville to US 52 in Lexington. Widen to Multi-Lanes and Upgrade interchange at US 52. Section B: US 64 from Davie County Line to US 52 in Lexington.	1 - Widen Existing Roadway	\$ 65,169,000	N/A	47.96	13.77	\$ 54,834,000	\$ 9,228,000	\$ 1,107,000	\$ 65,169,000		\$ 65,169,000		0				Highway	P3.0 Local Input Points	Sibling		57	Yes		
H090241-A	Highway	Regional Impact	R-3602A	US-64	US 64 from US 601 South of Mocksville	Davidson County Line	US 601 South of Mocksville to US 52 in Lexington. Widen to Multi-Lanes and Upgrade interchange at US 52. Section A: US 64 from US 601 South of Mocksville to Davidson County Line.	1 - Widen Existing Roadway	\$ 113,232,000	N/A	46.30	12.26	\$ 75,468,000	\$ 33,718,000	\$ 4,046,000	\$ 113,232,000		\$ 113,232,000		0				Highway	P3.0 Local Input Points	Sibling		57	Yes		
H090843	Highway	Regional Impact		US-601	I-74	SR 1104 (Cody Trail)	Expand Existing Facility to 4-Lane Road.	1 - Widen Existing Roadway	\$ 49,344,000	N/A	52.33	15.85	\$ 47,424,000	\$ 1,714,000	\$ 206,000	\$ 49,344,000		\$ 49,344,000		0				Highway	P3.0 Local Input Points					Yes	
H090856	Highway	Regional Impact		US-158	SR 1410 (Farmington Road)	SR 1600 (Milling Road)	Widen to a 4-Lane Facility. Greater Than 2-Foot Shoulder For Bicycles on US 158 from Milling Road to Harvest Way.	1 - Widen Existing Roadway	\$ 12,939,000	N/A	32.59	13.03	\$ 10,260,000	\$ 2,392,000	\$ 287,000	\$ 12,939,000		\$ 12,939,000		0				Highway	P3.0 Local Input Points					Yes	
H090862	Highway	Regional Impact		US-21	I-77	Iredell County Line	Widen Lanes to 2 12-Foot Lanes with 2 Foot Shoulder.	16 - Modernize Roadway	\$ 29,412,000	N/A	24.45	6.86	\$ 29,412,000	\$ -	\$ -	\$ 29,412,000		\$ 29,412,000		0				Highway	P3.0 Local Input Points					Yes	
H090865	Highway	Division Needs		SR-1605 East Main Street	US 601	SR 1765 (Unifi Industrial Road),	Widen to a 3-Lane Facility.	1 - Widen Existing Roadway	\$ 6,164,000	N/A	N/A	36.89	\$ 3,762,000	\$ 2,145,000	\$ 257,000	\$ 6,164,000		\$ 6,164,000		0				Highway	P3.0 Local Input Points					Yes	
H090923	Highway	Regional Impact		NC-89	SR 1420	NC 18	Roadway Improvements to NC 89 to Accommodate Truck Traffic including Widening of a Portion of the Existing Roadway and a Portion of New Location.	16 - Modernize Roadway	\$ 8,664,000	N/A	27.01	9.25	\$ 8,664,000	\$ -	\$ -	\$ 8,664,000		\$ 8,664,000		0				Highway	P3.0 Local Input Points					Yes	
H141289	Highway	Regional Impact		US-311	NC 65		Upgrade intersection with railroad crossing improvements	10 - Improve Intersection	\$ 2,325,000	N/A	50.04	52.22	\$ 1,875,000	\$ 450,000	\$ -	\$ 2,325,000		\$ 2,325,000		0				Highway	P3.0 Local Input Points					Yes	
H141643	Highway	Regional Impact		US-601	US 421	SR 1150 (Hoots Road) - Southern Planning Boundary	Widen US 601 from a 2-lane to a 3-lane major thoroughfare with center turn lane from the southern planning area boundary to US 421.	1 - Widen Existing Roadway	\$ 7,521,000	N/A	47.16	14.56	\$ 7,010,000	\$ 456,000	\$ 55,000	\$ 7,521,000		\$ 7,521,000		0				Highway	P3.0 Local Input Points					Yes	
T130090	Transit	Regional Impact	0	PART Surry Express #3			Expansion fleet vehicle - 40' Bus to expand passenger capacity on PART Express system operating on route corridors along US 52.	Expansion-Fixed Route - Headway Reduction	\$ 40,000	N/A	22.11	6.21			\$ 400,000	\$ 360,000	\$ 40,000			Federal and Local Match				Non-Highway	P3.0 Local Input Points					Yes	
A130400	Aviation	Division Needs	AV-5751	MWK - Mount Airy/ Surry County Airport			Extend runway from 4,300' to 5,500'. Project also includes extension of the parallel taxiway. (Includes Project Request Numbers: 2595)	535 - Taxiway Extension	\$ 2,160,000	N/A	N/A	69.28			\$ 2,400,000	\$ -	\$ 2,160,000	\$ 2,160,000	0	0	DIVISION	21	Non-Highway	Programmed and Subject to Reprioritization (Yrs 6-10)						Yes	
A130404	Aviation	Division Needs	AV-5758	MWK - Mount Airy/ Surry County Airport			Extend runway from 4,300' to 5,500'. Project also includes extension of the parallel taxiway. (Includes Project Request Numbers: 2596)	805 - Install runway edge lighting system / Emergency replacement	\$ 1,260,000	N/A	N/A	59.96			\$ 1,400,000	\$ -	\$ 1,260,000	\$ 1,260,000	0	0	DIVISION 6%	23	Non-Highway	Programmed and Subject to Reprioritization (Yrs 6-10)						Yes	
A130408	Aviation	Division Needs	AV-5757	ZEF - Elkin Municipal Airport			The existing runway safety area (RSA) extends only 100 feet beyond the current runway end. The FAA required minimum RSA for thisA-II Airport is 150 feet wide x 300 feet long. This Project would bring the existing runway 7 end into compliance with FAA requirements. (includes Project Request Numbers: 2219)	210 - Construct, expand, or repair	\$ 2,520,000	N/A	N/A	62.45			\$ 2,800,000	\$ -	\$ 2,520,000	\$ 2,520,000	0	0	DIVISION 6%	23	Non-Highway	Programmed and Subject to Reprioritization (Yrs 6-10)						Yes	
A130410	Aviation	Division Needs	AV-5759	ZEF - Elkin Municipal Airport			A 500 foot runway extension is proposed in order to increase safety at the airport and accommodate the variation of general aviation aircraft that utilize the airfield. A taxiway turnaround at the Runway 25 end will also increase safety and allow aircraft to pull off the runway after back taxiing. Project also includes and environmental assessment and preliminary engineering in order to properly assess all impacts. (includes Project Request Numbers: 2981)	535 - Taxiway Extension	\$ 2,124,000	N/A	N/A	59.43			\$ 2,360,000	\$ -	\$ 2,124,000	\$ 2,124,000	0	0	DIVISION 6%	23	Non-Highway	Programmed and Subject to Reprioritization (Yrs 6-10)						Yes	

B142114	BikeandPed	Division Needs	EB-5725	Mt. Airy Middle School Greenway Connector	S. Main Street	Mt. Airy Middle School	Construct a new sidewalk from S. Main Street to Mt. Airy Middle School (Total Length: 2,500 feet) and a greenway connector from Hamburg Street to the school (Total Length: 250 feet).	2. Construct multi-use trail / greenway / sidepath or on road bike lane on local roadway	\$ 192,500	N/A	N/A	77.28	\$ 134,750	\$ -	\$ 192,500	\$ -	\$ 192,500	\$ 154,000	0		DIVISION	22	Non-Highway	Programmed and Subject to Reprioritization (Yrs 6-10)				Yes	
H090838	Highway	Regional Impact	R-5736	US-601	SR 1345 (Blaise Church Road)	SR 1408 (Cana Road)	Widen to Multi-Lane Facility from SR 1345 (Blaise Church Road) to Boyce Drive. Widen to 3-Lane Facility from Boyce Drive to SR 1408 (Cana Road).	1 - Widen Existing Roadway	\$ 8,778,000	N/A	50.73	65.94	\$ 6,042,000	\$ 2,443,000	\$ 293,000	\$ 8,778,000	\$ 8,778,000	\$ 8,778,000	0		DIVISION	21	22	Highway	Programmed and Subject to Reprioritization (Yrs 6-10)				Yes
H111145	Highway	Division Needs	R-5733	SR-1415	700 Feet South of Beamer/Billy Reynolds Rd	US 421/Bemer Rd Interchange	A New interchange is Needed on US 421 South of Billy Reynolds Rd (SR 1134) and Beamer Rd (SR 1415) intersect to Provide A Naltemate Access Point on US 421. This interchange in Conjunction with Proposed Connector from Is Needed to Relieve Traffic from US 601/US 421 Area.	5 - Construct Roadway on New Location	\$ 12,736,000	N/A	N/A	45.86	\$ 12,654,000	\$ 73,000	\$ 9,000	\$ 12,736,000	\$ 12,736,000	\$ 12,900,000	0		DIVISION	21	23	Highway	Programmed and Subject to Reprioritization (Yrs 6-10)				Yes
Projects Removed (Cut) from Database																													
A130392	Aviation	Division Needs	0	MWK - Mount Airy/ Surry County Airport			Acquire land from Bannertown Volunteer Fire Department, Holly Springs Baptist Church, James Love and Lucy Cook for use in the runway extension project. Appraisals of first three properties have been completed. Negotiations are complete with the BVFD and are underway with Love and the Church. Cook is a willing seller. (includes Project Request Numbers: 3251)	1115 - Land Acquisition-Taxiway Construction	\$ 360,000	N/A	N/A	26.99	\$ 400,000	\$ -	\$ 360,000	\$ -	\$ 360,000	0	0					Non-Highway					No
A130393	Aviation	Division Needs	0	MWK - Mount Airy/ Surry County Airport			Construct Partial Parallel Taxiway to meet the requirement of a taxiway turnaround. Taxiway is approximately 800' long. (includes Project Request Numbers: 2553)	1125 - Clearing / Grading / Drainage / Paving / Marking / Lighting / Signage	\$ 960,300	N/A	N/A	27.92	\$ 1,067,000	\$ -	\$ 960,300	\$ -	\$ 960,300	0	0					Non-Highway					No
A130394	Aviation	Division Needs	0	MWK - Mount Airy/ Surry County Airport			Construct general aviation apron in vicinity of new terminal building. All tie-down spaces are currently used. This project will increase the aircraft parking apron by approximately 14,500 square yards adding an additional 12 tie-down spaces and space for itinerant aircraft parking. Construct aircraft storage hangars to accommodate additional aircraft. (includes Project Request Numbers: 2594/2602/2604/2609)	1220 - Permitting/mitigation / Preliminary Engineering	\$ 5,373,000	N/A	N/A	8.25	\$ 5,970,000	\$ -	\$ 5,373,000	\$ -	\$ 5,373,000	0	0					Non-Highway					No
A130395	Aviation	Division Needs	0	MWK - Mount Airy/ Surry County Airport			New Terminal Building, Parking Lot, and Entrance Road. (includes Project Request Numbers: 2601)	1305 - Construct new terminal building	\$ 936,000	N/A	N/A	11.69	\$ 1,040,000	\$ -	\$ 936,000	\$ -	\$ 936,000	0	0					Non-Highway					No
A130396	Aviation	Division Needs	0	MWK - Mount Airy/ Surry County Airport			Installation of approach lighting system to Runway 36. (includes Project Request Numbers: 2605)	1705 - Install MALS / MALSf / MALSr (for precision runway only)	\$ 450,000	N/A	N/A	11.85	\$ 500,000	\$ -	\$ 450,000	\$ -	\$ 450,000	0	0					Non-Highway					No
A130397	Aviation	Division Needs	0	MWK - Mount Airy/ Surry County Airport			Construct an access road to allow for future corporate development. (includes Project Request Numbers: 2598)	2100 - Hangars and Economic Development	\$ 144,000	N/A	N/A	8.29	\$ 160,000	\$ -	\$ 144,000	\$ -	\$ 144,000	0	0					Non-Highway					No
A130398	Aviation	Division Needs	0	MWK - Mount Airy/ Surry County Airport			Relocate existing utilities to new road right of way. This is a new cost item for the project. Cost was originally believed to be covered by utility companies due to agreements with NCDOT. Work does not need to be performed until the runway extension is underway. (includes Project Request Numbers: 2559)	3000 - Other	\$ 1,107,000	N/A	N/A	15.86	\$ 1,230,000	\$ -	\$ 1,107,000	\$ -	\$ 1,107,000	0	0					Non-Highway					No
A130399	Aviation	Division Needs	0	MWK - Mount Airy/ Surry County Airport			Acquire 15 parcels on east side of the airport to protect airport environment. (includes Project Request Numbers: 2603)	305 - Land Acquisition / Obstruction removal / Easement - RPZ	\$ 1,776,600	N/A	N/A	17.11	\$ 1,974,000	\$ -	\$ 1,776,600	\$ -	\$ 1,776,600	0	0					Non-Highway					No
A130401	Aviation	Division Needs	0	MWK - Mount Airy/ Surry County Airport			Widen runway from 75' to 100'. (includes Project Request Numbers: 2597)	540 - Widening	\$ 1,620,000	N/A	N/A	16.15	\$ 1,800,000	\$ -	\$ 1,620,000	\$ -	\$ 1,620,000	0	0					Non-Highway					No
A130402	Aviation	Division Needs	0	MWK - Mount Airy/ Surry County Airport			Rehabilitate runway pavement and strengthen to 30,000# dual wheel gear aircraft. (includes Project Request Numbers: 2599)	605 - Runway Overlay	\$ 1,890,000	N/A	N/A	15.85	\$ 2,100,000	\$ -	\$ 1,890,000	\$ -	\$ 1,890,000	0	0					Non-Highway					No
A130403	Aviation	Division Needs	0	MWK - Mount Airy/ Surry County Airport			Strengthen runway to 45,000# dual wheel gear aircraft to handle increased corporate aircraft that currently use the airport. (includes Project Request Numbers: 2607)	605 - Runway Overlay	\$ 1,890,000	N/A	N/A	9.55	\$ 2,100,000	\$ -	\$ 1,890,000	\$ -	\$ 1,890,000	0	0					Non-Highway					No
A130405	Aviation	Division Needs	0	ZEF - Elkin Municipal Airport			This project includes construction of a 35-foot wide paved turnaround taxiway at the Runway 7 end, which will also be part of the future Parallel taxiway. A taxiway turnaround will increase safety and allow aircraft to pull off the runway after back taxiing. Approximately 2.6 acres of additional land (fee simple) on the northwest side of the airport needs to be acquired for this project. (includes Project Request Numbers: 2220)	1125 - Clearing / Grading / Drainage / Paving / Marking / Lighting / Signage	\$ 1,858,500	N/A	N/A	25.97	\$ 2,065,000	\$ -	\$ 1,858,500	\$ -	\$ 1,858,500	0	0					Non-Highway					No
A130406	Aviation	Division Needs	0	ZEF - Elkin Municipal Airport			Construction of a parallel taxiway serving the existing 4000 foot runway ends with an additional connector taxiway between the new end of runway 25 and the main connector taxiway into the aircraft parking ramp and includes medium intensity taxiway edge lighting and pavement markings. A full-length parallel taxiway will minimize the potential for runway incursions during periods of heavy activity and will increase the overall capacity of the airfield. (includes Project Request Numbers: 2226)	1125 - Clearing / Grading / Drainage / Paving / Marking / Lighting / Signage	\$ 4,068,000	N/A	N/A	7.67	\$ 4,520,000	\$ -	\$ 4,068,000	\$ -	\$ 4,068,000	0	0					Non-Highway					No
A130407	Aviation	Division Needs	0	ZEF - Elkin Municipal Airport			New Terminal Building to serve the airport, transient pilots, flight training and improve aesthetics for the patrons. Improvement to the airport's safety and security, access to the apron, airfield, and aircraft by controlling access through the new terminal building at an improved location and with improved fencing. (includes Project Request Numbers: 2223)	1305 - Construct new terminal building	\$ 1,534,500	N/A	N/A	6.44	\$ 1,705,000	\$ -	\$ 1,534,500	\$ -	\$ 1,534,500	0	0					Non-Highway					No

A130409	Aviation	Division Needs	0	ZEF - Elkin Municipal Airport			This project will prepare multiple individual hangar location for build out by the airport or individuals, provide additional T-hangers and box hangars on the eastside of the terminal area and expand the apron and provide additional tie-downs. This project will increase the number of tie-downs, provide an additional taxi lane to facilitate aircraft movements. This project can be phased. (includes Project Request Numbers: 2222/2225/2227)	2100 - Hangers and Economic Development	\$ 3,784,500	N/A	N/A	5.74		\$ 4,205,000	\$ -	\$ 3,784,500	0	0							Non-Highway							No
A130411	Aviation	Division Needs	0	ZEF - Elkin Municipal Airport			The Elkin Municipal Airport is located at the start of the North Carolina mountains, where the local weather conditions can vary greatly from alternative airports in the region. The airport would like to install an AWOS-III or better weather system to provide accurate weather information to the pilots. (includes Project Request Numbers: 2982)	915 - AWOS installation	\$ 148,500	N/A	N/A	6.30		\$ 165,000	\$ -	\$ 148,500	0	0							Non-Highway							No
B141946	BikeandPed	Division Needs	0	US 601	US 64 (Lexington Road)	Southwood Drive	Construct a sidewalk along US 601 from downtown Mocksville to Davie County High School	5. Construct Sidewalk	\$ 595,000	N/A	N/A	14.50	\$ 416,500	\$ -	\$ 595,000	\$ -	\$ 595,000	0							Non-Highway							No
B142081	BikeandPed	Division Needs	0	Hospital Sidewalk Network - S. South Street	Worth Street	Rockford Street	Construct a sidewalk along 1) S. South Street from Worth Street to Rockford Street (Total Length: 1,520 feet); 2) Rockford Street from Penn Street to US 52 (Total Length: 1,500 feet); and 3) Worth Street from South Street to US 52 (Total Length: ap	2. Construct multi-use trail / greenway / sidepath or on road bike lane on local roadway	\$ 298,900	N/A	N/A	23.60	\$ 209,230	\$ -	\$ 298,900	\$ -	\$ 298,900	0							Non-Highway							No
B142102	BikeandPed	Division Needs	0	Riverside Drive	E Pine Street	City Limits	Construct a new sidewalk connection to Jones Intermediate School along Riverside Drive (Total Length: 6,000)	5. Construct Sidewalk	\$ 420,000	N/A	N/A	17.64	\$ 294,000	\$ -	\$ 420,000	\$ -	\$ 420,000	0							Non-Highway							No
B142108	BikeandPed	Division Needs	0	Mt. Airy High School Greenway Connector	Orchard Street	Emily B. Taylor Greenway	Construct a greenway connector from Orchard Street through the Mt. Airy High School campus to the Emily B. Taylor Greenway (Total Length: 1,000 feet) and complete the sidewalk gap connection on Orchard Street to N. South Street (Total Length: 1,050)	2. Construct multi-use trail / greenway / sidepath or on road bike lane on local roadway	\$ 143,500	N/A	N/A	20.95	\$ 100,450	\$ -	\$ 143,500	\$ -	\$ 143,500	0							Non-Highway							No
B142147	BikeandPed	Division Needs	0	Mount Airy Greenway - Northern Connector	Emily B. Taylor Greenway	Ararat River Greenway	Construct the northern connector of the Mount Airy Greenway System to connect the Emily B. Taylor and Ararat River Greenways	2. Construct multi-use trail / greenway / sidepath or on road bike lane on local roadway	\$ 1,000,000	N/A	N/A	10.41	\$ 700,000	\$ -	\$ 1,000,000	\$ -	\$ 1,000,000	0							Non-Highway							No
B142213	BikeandPed	Division Needs	0	SR 1605 (Old US 421)	Forsyth County	Flint Hill Road	Upgrade roadway to bicycle standards, including 4' wide paved shoulders	3. Add or widen paved shoulder	\$ 840,000	N/A	N/A	15.87	\$ 588,000	\$ -	\$ 840,000	\$ -	\$ 840,000	0							Non-Highway							No
B142226	BikeandPed	Division Needs	0	SR 1600 (Milling Road)	US 158	Elisha Creek Dr	Construct a sidewalk along Milling Road from US 158 to Elisha Creek Dr (Former SPOTID: B141950)	5. Construct Sidewalk	\$ 569,450	N/A	N/A	8.19	\$ 398,615	\$ -	\$ 569,450	\$ -	\$ 569,450	0							Non-Highway							No
H090180	Highway	Regional Impact	R-2640	NC-268	South Key Street	Old US 52	Pilot Mountain, South Key Street to Old US 52. Two Lanes on Multi-Lane Right of Way, New Location.	5 - Construct Roadway on New Location	\$ 11,141,000	N/A	13.47	10.28	\$ 10,032,000	\$ 990,000	\$ 119,000	\$ 11,141,000								Highway							No	
H090211	Highway	Regional Impact	R-3111	- New Route - Mocksville Bypass	US 64 East of Mocksville	US 601 West of Mocksville	US 64 East of Mocksville to US 601 West of Mocksville. Four-Lane Bypass of Mocksville on Four Lane Right of Way, New Location. (includes R-3326)	5 - Construct Roadway on New Location	\$ 208,579,000	N/A	17.49	12.20	\$ 182,400,000	\$ 23,374,000	\$ 2,805,000	\$ 208,579,000								Highway							No	
H090234	Highway	Regional Impact	R-3423	NC-268	East of Veneer Street in Elkin	SR 2048 (Shoals Road)/SR 2099 (Barney Venable Road) in Pilot Mountain	East of Veneer Street in Elkin to SR 2048 (Shoals Road)/SR 2099 (Barney Venable Road) in Pilot Mountain. Upgrade Roadway and Provide Turn Lanes.	16 - Modernize Roadway	\$ 86,982,000	N/A	9.16	6.90	\$ 86,982,000	\$ -	\$ -	\$ 86,982,000								Highway							No	
H090246	Highway	Regional Impact	R-3605	NC-268	Key Street	SR 2048 (Shoals Road)	Widen to Multi-Lanes with Curb and Gutter.	1 - Widen Existing Roadway	\$ 12,301,000	N/A	21.43	17.57	\$ 11,742,000	\$ 499,000	\$ 60,000	\$ 12,301,000								Highway							No	
H090313	Highway	Division Needs	R-5101	- New Route	West Side of Yadkin River	East Side of Yadkin River	Construct New Crossing of Yadkin River.	5 - Construct Roadway on New Location	\$ 34,389,000	N/A	N/A	4.79	\$ 34,200,000	\$ 169,000	\$ 20,000	\$ 34,389,000								Highway							No	
H090345	Highway	Division Needs	U-2553	- South Street	US 601 (Rockford Street)	US 52 Business (West Lebanon Street)	US 601 (Rockford Street) to US 52 Business (West Lebanon Street). Widen to Multi-Lanes and Improve Intersections at Worth and Grace Streets.	6 - Widen Existing Roadway and Construct Part on New Location	\$ 24,144,000	N/A	N/A	11.28	\$ 8,550,000	\$ 13,923,000	\$ 1,671,000	\$ 24,144,000								Highway							No	
H090860	Highway	Regional Impact		US-601	SR 1134 (Country Club Road)	Surry County Line	Widen Lanes to 12 Feet, and Add 2 Foot Paved Shoulder. - install Turn Lane at US 601/Country Club Road intersection (SR 1503. - install Passing Lanes on Sections of Roadway Where there Are Few Existing Opportunities to Pass.	16 - Modernize Roadway	\$ 25,422,000	N/A	11.56	8.63	\$ 25,422,000	\$ -	\$ -	\$ 25,422,000								Highway							No	
H090254	Highway	Regional Impact	R-3801	NC-8	NC 89 (Southern Intersection) North of Walnut Cove	Virginia State Line	NC 85 at Germantown to the Virginia State Line. Upgrade Two Lane Facility to Two 12-Foot Lanes. This Project Has Been Completed from NC 65/NC8 intersection in Germantown to NC 8/NC 89 intersection North of Walnut Cove.	16 - Modernize Roadway	\$ 54,455,000	N/A	9.14	6.74	\$ 43,800,000	\$ 5,300,000	\$ 5,355,000	\$ 54,455,000								Highway							No	
H090260	Highway	Division Needs	R-3823	- New Route	US 52	US 311	US 52 to US 311. Two Lanes Utilizing Existing Secondary Roads Where Possible, Some New Location.	6 - Widen Existing Roadway and Construct Part on New Location	\$ 89,837,000	N/A	N/A	7.48	\$ 84,588,000	\$ 4,687,000	\$ 562,000	\$ 89,837,000								Highway							No	
H090547	Highway	Regional Impact		NC-801	US 158	Redland Road	NC 801 - Widen to Multi-Lanes. 3 Lanes from US 158 to Redland Road.	1 - Widen Existing Roadway	\$ 16,391,000	N/A	20.87	16.90	\$ 13,794,000	\$ 2,319,000	\$ 278,000	\$ 16,391,000								Highway							No	
H090861	Highway	Regional Impact		US-311	NC 65	NC 89	Widen US 311 to Four Lane Facility in Two Different Locations Where there Is No on-Street Parking. - NC 65 to Second Street in Walnut Cove. - Seventh Street to NC-89 intersection in Walnut Cove. - Second Street to Seventh Street Will Be Left Alone Du	1 - Widen Existing Roadway	\$ 22,416,000	N/A	14.81	11.33	\$ 17,214,000	\$ 4,645,000	\$ 557,000	\$ 22,416,000								Highway							No	
H090863	Highway	Division Needs		SR-1801 Deadmon Road	US 601	NC 801	Widen to 2 12-Foot Lanes.	16 - Modernize Roadway	\$ 10,716,000	N/A	N/A	5.16	\$ 10,716,000	\$ -	\$ -	\$ 10,716,000								Highway							No	
H090864	Highway	Division Needs		- New Route - SR 1765 (Unifi Industrial Road) Extension	SR 1605 (East Main Street)	SR 1500 (Mackie Road)	2Nd Phase of US 601 - US 421 Connector. Extension of Unifi Industrial Road (SR 1765). This Facility Would Complete the Outer Loop of Yadkinville.	5 - Construct Roadway on New Location	\$ 7,493,000	N/A	N/A	10.36	\$ 7,068,000	\$ 379,000	\$ 46,000	\$ 7,493,000								Highway							No	
H090866	Highway	Division Needs		- New Route - SR 1544 (McKinney Road) Extension	SR 1544 (McKinney Road)	NC 89(Pine Street)	Extend McKinney Road (SR 1544) to NC 89. This Extension Would Connect US 601 to NC 89 in Mount Airy.	5 - Construct Roadway on New Location	\$ 6,748,000	N/A	N/A	13.62	\$ 6,498,000	\$ 223,000	\$ 27,000	\$ 6,748,000								Highway							No	
H111142	Highway	Regional Impact		NC-8	Piney Grove Church Rd SR - 1496	Virginia State Line	Widening to 2-12 Foot Lanes with 2 Foot Shoulder. Heavy Truck Traffic, Logging Trucks, with Narrow Roads Make This a Hazardoustrip. Part to Tip Project R-3801.	16 - Modernize Roadway	\$ 9,918,000	N/A	7.38	5.32	\$ 9,918,000	\$ -	\$ -	\$ 9,918,000								Highway							No	
H111152	Highway	Regional Impact		NC-89	Landmark Ct	Round Peak Church Rd (SR 1397)	Widen to 3-Lanes Where Area Is Not Existing Multi-Lane.	1 - Widen Existing Roadway	\$ 16,170,000	N/A	11.76	9.61	\$ 14,706,000	\$ 1,307,000	\$ 157,000	\$ 16,170,000								Highway							No	
H111156	Highway	Division Needs		SR-1144	Cc Camp Rd (SR 1138)	Hugh Chatham Memoria Hospital	Improve to 3-Lane Facility from Cc Camp to Hospital.	1 - Widen Existing Roadway	\$ 6,201,000	N/A	N/A	8.39	\$ 5,130,000	\$ 956,000	\$ 115,000	\$ 6,201,000								Highway							No	

H141409	Highway	Division Needs		SR-1765 Unifi Industrial Drive Ext.	SR 1605 (East Main Street)	SR1134 (Country Club Road)	Construct a two-lane minor thoroughfare on new location, extending Unifi Industrial Drive from Main Street (SR 1605) to Country Club Road (SR 1134)	5 - Construct Roadway on New Location	\$ 9,776,000	N/A	N/A	10.92	\$ 9,232,000	\$ 486,000	\$ 58,000	\$ 9,776,000	\$ 9,776,000	0	Highway	No
H141623	Highway	Regional Impact		US-601 , US-52	US 52		Improve intersection by upgrading signalization, installing pedestrian crossings, and improving railroad crossing	10 - Improve Intersection	\$ 2,325,000	N/A	24.28	17.47	\$ 1,875,000	\$ 450,000	\$ -	\$ 2,325,000	\$ 2,325,000	0	Highway	No
H141674	Highway	Division Needs		I-77	Asbury Church Road		Convert grade separation to interchange at Asbury Church Road and I-77	9 - Convert Grade Separation to Interchange	\$ 4,805,000	N/A	N/A	5.77	\$ 3,875,000	\$ 930,000	\$ -	\$ 4,805,000	\$ 4,805,000	0	Highway	No
H141733	Highway	Regional Impact		NC-704	NC 8	Rockingham County Line	Widen NC 704 from the existing 10-foot lanes to 12-foot lanes from NC 8 to NC 770 and then from NC 772 to the Rockingham County Line	16 - Modernize Roadway	\$ 12,647,000	N/A	10.44	6.86	\$ 12,647,000	\$ -	\$ -	\$ 12,647,000	\$ 12,647,000	0	Highway	No



Agenda Item

Agenda Item V

NC Mountains to Sea Trail Update

Background

The NC Mountains to Sea Trail goes through Surry, Yadkin & Stokes Counties. Kate Dixon will be discussing the planning process, what a “Trail Town” is and the economic impact the trail will bring to your community.

Action Requested

Please review attached route information.

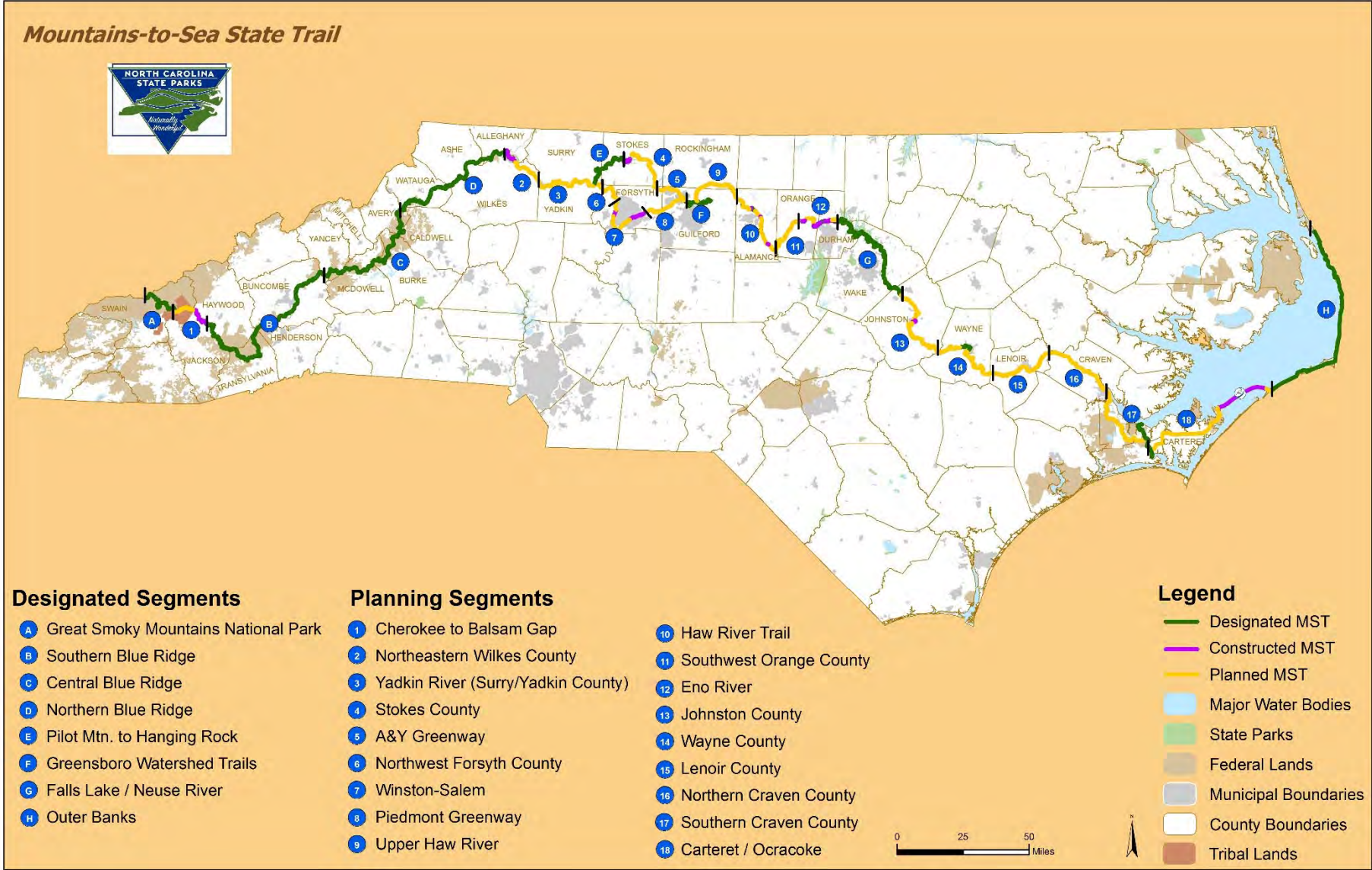
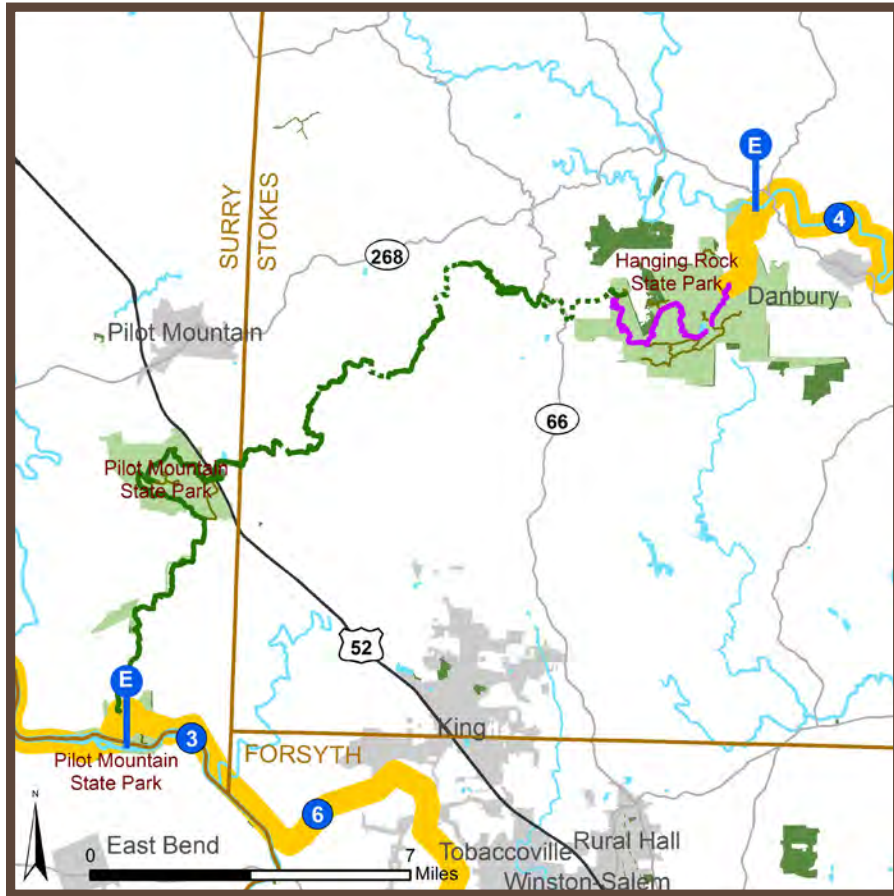


Figure 3. North Carolina Statewide Map of the Designated and Planning Segments for the MST

SEGMENT E: Pilot Mountain to Hanging Rock State Park



Description

From: Pilot Mountain State Park

To: Hanging Rock State Park

This segment of the MST stretches from Pilot Mountain State Park in Surry County to Hanging Rock State Park in Stokes County using State Park trails and the Sauratown Trail. The Sauratown Trail is an equestrian and hiking trail, managed by a local non-profit, that crosses private farms and rural woodlands.

Segment Details

Designated Trail Length: ~ 31 miles

Route Alignment: State parks, Sauratown Trail on private property

Segment Managers: [NC Division of Parks and Recreation](#), [Sauratown Trails Association](#), [Friends of Sauratown Mountains](#)

Additional Planning Stakeholders: [Surry County](#), [Stokes County](#), [Northwest Piedmont RPO](#), [Piedmont Triad Regional Council](#)

Plan Your Trip

- [The Historic Martin Rockhouse](#)
- [Sauratown Trails information](#)
- [Hanging Rock State Park](#)
- [Pilot Mountain State Park](#)

Trail Maintainers/Volunteers

The Sauratown Trails Association, Friends of Sauratown Mountains, and the NC Division of Parks and Recreation are also the trail maintainers.

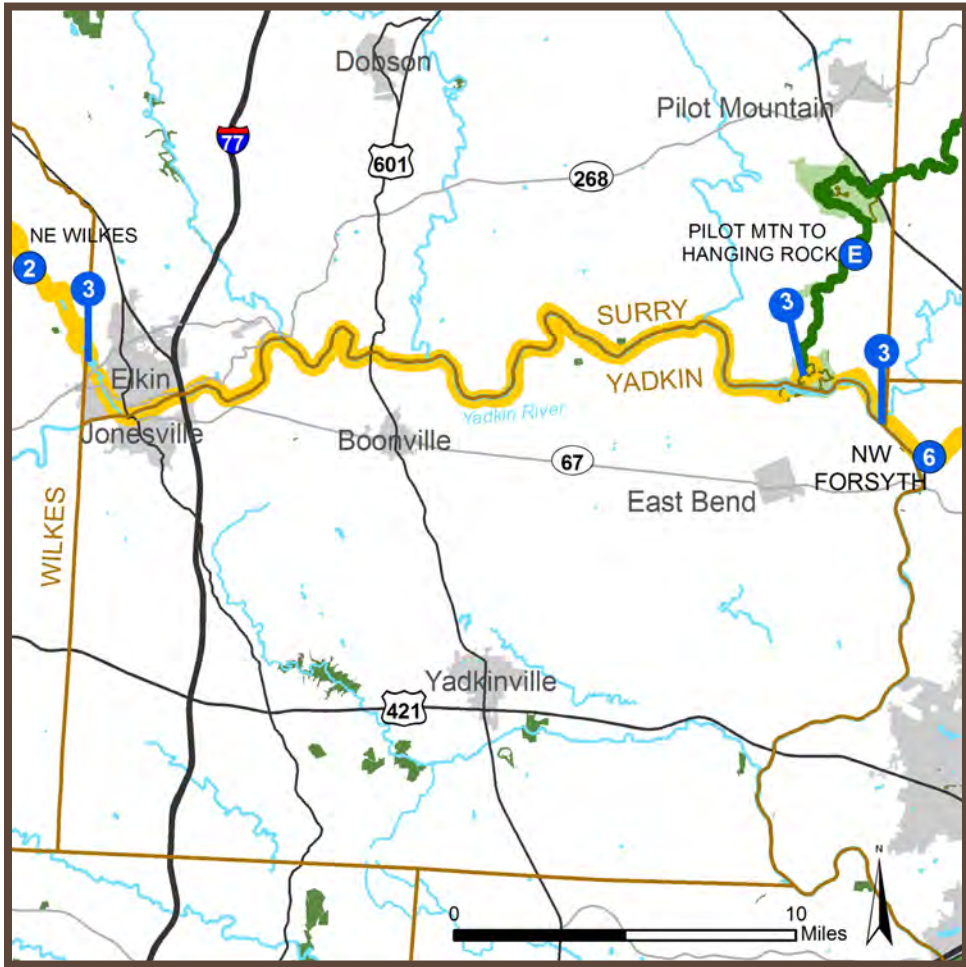
Legend

MST Status	County Boundary	Interstate
Constructed	State Park	NC Route
Designated	Open Space	US Route
Planned Route (1/4 mi. buffer)	Institutional	Major Hydrography
Adjacent Segment	Municipal Boundary	Proposed Trail
Segment Start and End Points	State Boundary	Other Trail

SEGMENT 3: Yadkin River (Surry/Yadkin County)

Planning Priority

Near-Term Mid-Term Long-Term



Legend

MST Status

- Constructed
- Designated
- Planned Route (1/4 mi. buffer)
- Adjacent Segment
- Segment Start and End Points

- County Boundary
- State Park
- Open Space
- Institutional
- Municipal Boundary
- State Boundary
- Interstate
- NC Route
- US Route
- Major Hydrography
- Proposed Trail
- Other Trail

Description

From: Wilkes County

To: Pilot Mountain State Park

This segment runs from Wilkes County near Elkin to the existing MST at Pilot Mountain State Park.

Planning Strategies

The Stone Mountain to Pilot Mountain Master Plan (2014) identifies the preferred route for this segment. The MST is also addressed in Surry County and Yadkin County park and trail plans.

Opportunities

The proposed MST route follows the Yadkin River throughout this segment. There are some public lands that may be used for the trail, depending on the final route. Large parcels intersect about half of the planned corridor, which could streamline coordination of easements.

x	Large Landholdings	x	Stream/River Corridors		Staff Resources
x	Public Land		Sidewalk/Bicycle Network		Federal Property
	Local Planning		Floodplain/Wetlands		Abandoned RR ROW

Challenges

River crossings and developing the final alignment are the primary challenges.

x	Stream/River Crossings		Coordinating Easements	x	Local Planning
x	Detailed Alignment		Urbanized Corridor		Federal Property
	Major Roadway Crossing		Floodplain/Wetlands		

Segment Details

Constructed Trails: None constructed

Route Alignment: Yadkin River

Key Properties: None

Approximate Length: 34 miles

Potential Segment Manager(s):
[Yadkin County](#), [Surry County](#), [Elkin](#),
[Jonesville](#), [Pilot Mtn. State Park](#)

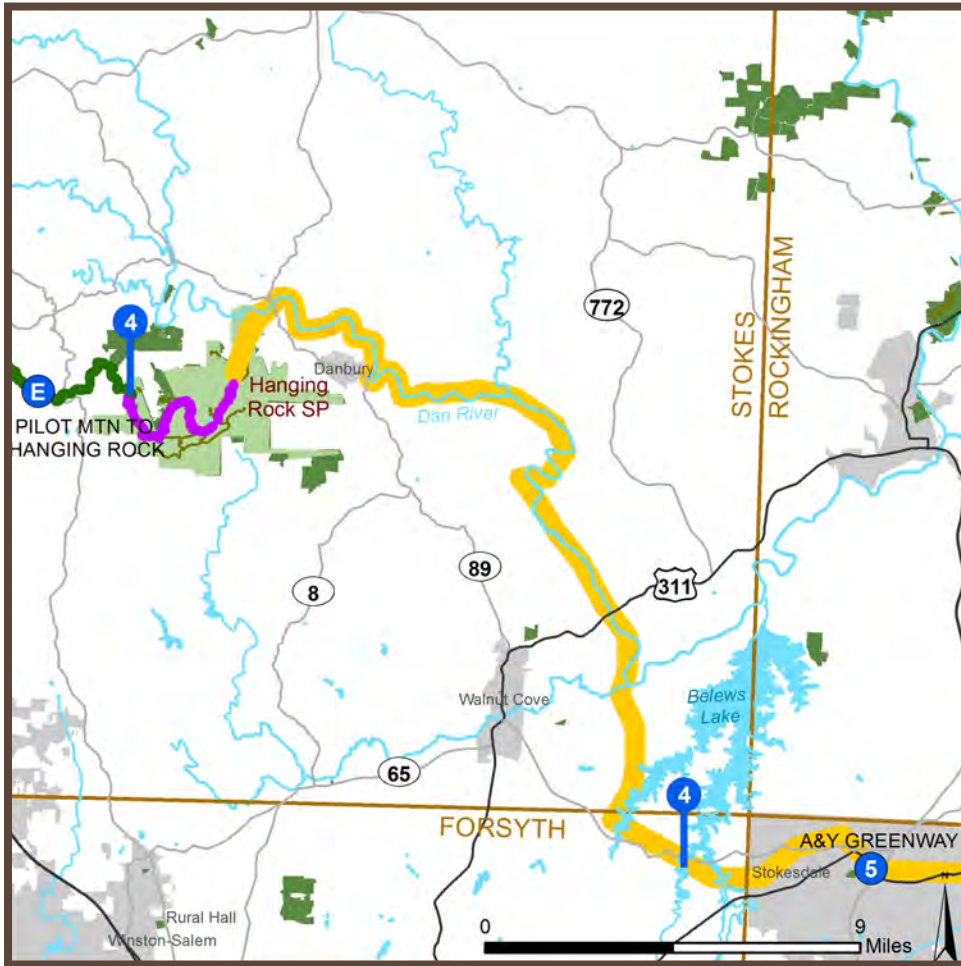
Additional Planning Stakeholders:
[Boonville](#), [Northwest Piedmont RPO](#)

Designated Segments within Planned Segment: None.

SEGMENT 4: Stokes County

Planning Priority

Near-Term Mid-Term Long-Term



Legend

MST Status

- Constructed
- Designated
- Planned Route (1/4 mi. buffer)
- Adjacent Segment
- Segment Start and End Points

County Boundary

- State Park
- Open Space
- Institutional
- Municipal Boundary
- State Boundary

Interstate #

- NC Route #
- US Route #
- Major Hydrography
- Proposed Trail
- Other Trail

Description

From: Hanging Rock State Park

To: Belews Lake (Forsyth County)

This segment connects Hanging Rock State Park to the future Atlantic and Yadkin Greenway extension terminus at Belews Lake. Belews Lake is owned by the Duke Power Company.

Planning Strategies

An updated Comprehensive Plan and Parks and Recreation Plan in Stokes County will address the MST and strategies to move forward trail plans along the Dan River and private property.

Opportunities

The Dan River offers a potential corridor from Hanging Rock State Park to just north of Belews Lake. There are large land parcels, which could help to streamline acquisition of easements.

x	Large Landholdings	x	Stream/River Corridors		Staff Resources
	Public Land		Sidewalk/Bicycle Network		Federal Property
	Local Planning		Floodplain/Wetlands		Abandoned RR ROW

Challenges

Planning is needed to determine the exact alignment of the MST between the Dan River and Belews Lake. While there is some staff availability, there is not a dedicated parks and recreation department in Stokes County.

	Stream/River Crossings	x	Coordinating Easements	x	Local Planning
x	Detailed Alignment		Urbanized Corridor		Federal Property
	Major Roadway Crossing		Floodplain/Wetlands		

Segment Details

Constructed Trails: None constructed

Route Alignment: Dan River, Private Property

Key Properties: Hanging Rock State Park, Duke Energy (Belews Lake)

Approximate Length: 32 miles

Designated Segments within Planned Segment: None

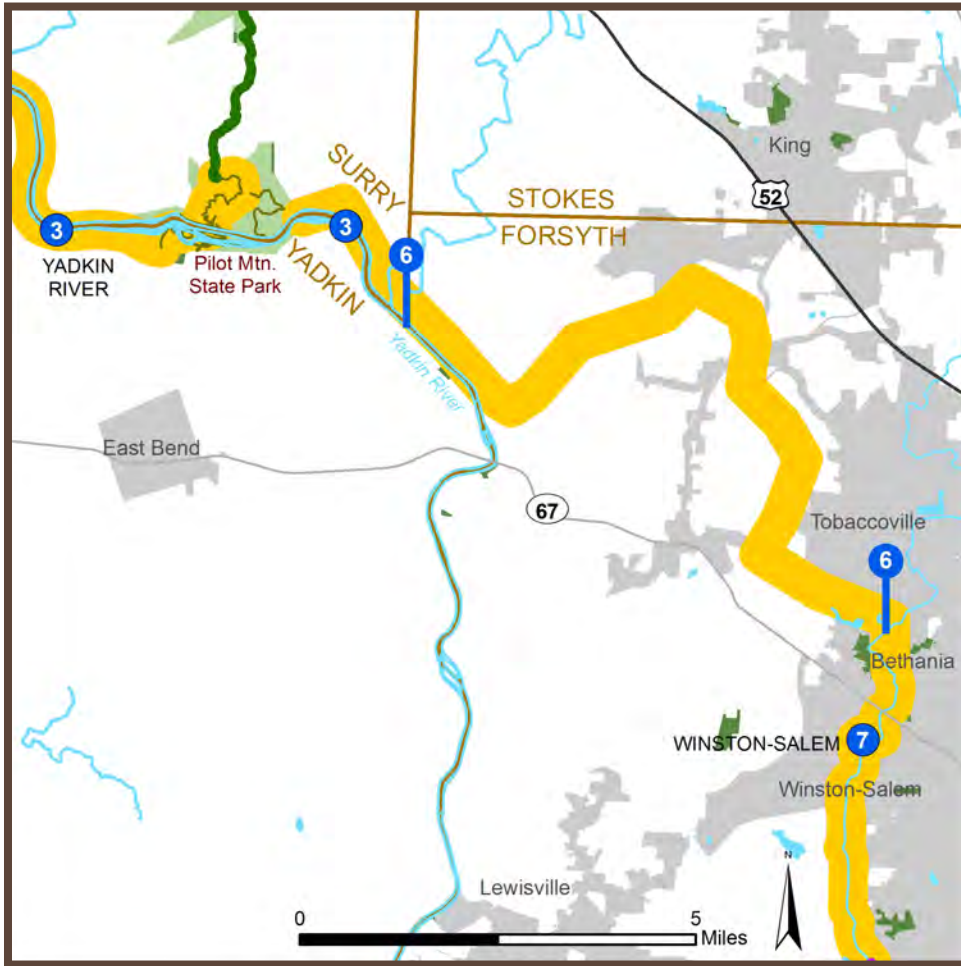
Potential Segment Manager(s): Stokes County, Forsyth County

Additional Planning Stakeholders: Hanging Rock State Park, Duke Energy (Belews Lake), Danbury, Northwest Piedmont RPO, Winston-Salem MPO

SEGMENT 6: Northwest Forsyth County

Planning Priority

Near-Term Mid-Term Long-Term



Legend

MST Status	County Boundary	Interstate #
Constructed	State Park	NC Route #
Designated	Open Space	US Route #
Planned Route (1/4 mi. buffer)	Institutional	Major Hydrography
# Adjacent Segment	Municipal Boundary	Proposed Trail
# Segment Start and End Points	State Boundary	Other Trail

Description

From: Pilot Mountain State Park

To: Winston-Salem City Limits

This segment extends from Pilot Mtn. State Park to the northwestern municipal limits of Winston-Salem near the town of Bethania.

Planning Strategies

The 2012 Forsyth County Greenway Plan and the Piedmont Triad Regional Council's regional trail inventory and plan address the MST. Future planning is needed to finalize the alignment of this segment.

Opportunities

The future trail could utilize the Yadkin River and/or several creeks in the area.

Large Landholdings	x	Stream/River Corridors	x	Staff Resources
Public Land		Sidewalk/Bicycle Network		Federal Property
Local Planning		Floodplain/Wetlands		Abandoned RR ROW

Challenges

The primary challenge is the lack of planning focus on this segment. Most support for trails and greenways in Forsyth County is within Winston-Salem and Kernersville.

x	Stream/River Crossings	x	Coordinating Easements	x	Local Planning
x	Detailed Alignment	x	Urbanized Corridor		Federal Property
	Major Roadway Crossing		Floodplain/Wetlands		

Segment Details

Constructed Trails: None constructed

Approximate Length: 14 miles

Route Alignment: Yadkin River, Private Property

Potential Segment Manager(s): Forsyth County, Bethania, Surry County, Yadkin County

Key Properties: Pilot Mountain State Park, Historic Bethania

Additional Planning Stakeholders: Tobaccoville, Northwest Piedmont RPO, Winston-Salem MPO

Designated Segments within Planned Segment: None



Agenda Item

Agenda Item VI

Division 9 Update

Background

Diane Hampton will provide an update on projects in Division 9.

Action Requested

Please review attached project list.

**Northwest Piedmont
Transportation Update
June 16, 2015**

WBS / TIP No.	Description	Let Date	Completion Date	Status	Construction Cost	Contractor	Comments
Projects Under Construction							
B-4645	Replace Bridges #29 and #30 over Little Yadkin River on US 52 in Stokes County.	Aug., 2013	Oct. 15, 2015 <i>(perm. vegetation established by April 12, 2016)</i>	72.6% Complete	\$6,399,752	Smith-Rowe, LLC	The Contractor has shifted the NB traffic onto the old SB bridge. Girders have been set on the center span of NB bridge. Remaining girder to be set before end of June.
BD-5109AE	Replace Bridge #45 on SR 1998 (Mtn. View Church Rd) over an Unnamed Creek in Stokes County	June 24, 2015	March 31, 2016 <i>(perm. vegetation established by 110 days from start date)</i>	Availability date July 20, 2015 - Aug. 14, 2015	\$475,000	TBD	Currently advertised for let
BD-5109AF	Replace Bridge #108 on SR 1674 (Delta Church Rd) over Snow Creek in Stokes County	June 24, 2015	June 30, 2016 <i>(perm. vegetation established by 160 days from start date)</i>	Availability date July 20, 2015 - Nov. 13, 2015	\$1,000,000	TBD	Currently advertised for let
17BP.9.R.24	Replace Bridge #23 over Peoples Creek on SR 1650 (Peoples Creek Rd) in Davie County.	Oct. 22, 2014	July 31, 2015 <i>(perm. vegetation established by May 7, 2015)</i>	99% Complete	\$371,114	Miller Engineering Co., Inc.	Work began Jan. 19, 2015. and completed May 7, 2015. Road open to traffic. Awaiting perm. vegetation establishment.
17BP.9.R.29	Replace Bridge #119 over Beaver Island Creek on SR 1636 (Buffalo Rd) in Stokes County.	Dec. 10, 2014	June 5, 2015 <i>(perm. vegetation established by Sept. 12, 2015)</i>	95% Complete	\$838,593	R.E. Burns & Sons Co., Inc.	Work began Jan. 12, 2015 and scheduled to complete on June 5, 2015. Contractor has completed everything except placing final pavement markings. Road is scheduled to be reopened to traffic on June 5, then will be in permanent vegetation establishment period.
17BP.9.R.34	Rehabilitation and bridge beam painting of (4) bridges in Davidson County, (1) in Forsyth County, (3) in Rowan County, and (1) in Stokes County.	April, 2012	Nov. 1, 2015	87.3% Complete	\$12,585,775	Crowder Construction Co.	Design Build Project –(Br. #115) Pine Hall Rd. The contractor will close Pine Hall Rd (6/10 - 7/2) to switch traffic to new bridge, install a 72" pipe under roadway, and NS Railroad will be installing a new crossing. Once this is complete, the road will be reopened to traffic and the old bridge will be demolished and removed.
17BP.9.R.61	Replace (2) Bridges in Davidson, (1) in Davie, (3) Bridges in Rowan, and (4) Bridges in Stokes County.	May 19, 2015	June 30, 2019	Availability date June 2, 2015	\$10,642,621	Smith-Rowe, LLC	Bridge #73 (SR 1324, Ollie Harkey Rd) in Davie, Bridges #86 (SR 1691, Stacy Rothrock Rd), 104 (SR 1695, Dodgetown Rd), 129 (SR 1484, Dan George Rd), and 224 (SR 1647, Tom Shelton Rd) in Stokes County.
9CR.10851.160 9CR.20851.160	Contract resurfacing on 15.267 miles including NC 8 from NC 89 to Virginia State line, and (2) sections of Secondary routes in Stokes County.	June 16, 2015	Nov. 6, 2015	Availability date July 27, 2015	\$1,800,000	TBD	

WBS / TIP No.	Description	Let Date	Completion Date	Status	Construction Cost	Contractor	Comments
Division Administered Projects Under Construction							
BD-5109AA	Replace Bridge #60 over Peeler Creek on SR 1802 (Will Boone Rd) in Davie Co.	May 27, 2015	Dec. 30, 2015 <i>(perm. vegetation established by 100 days from work start)</i>	Availability date June 22, 2015 - July 13, 2015	\$339,147	Smith-Rowe, LLC	Preconstruction meeting has not yet been scheduled.
ER-2973I	Landscaping at I-40 and US 601 Interchange in Davie Co.	Oct. 22, 2014	March 31, 2015 <i>(final completion with plants still living May 1, 2016)</i>	98% Complete	\$65,566	Country Boy Landscaping	Planting complete on March 31, 2015. Observation period for live plants in effect until May 1, 2016.
9SP.20305.1	Contract resurfacing - Asphalt Surface Treatment (AST) on 13.35 miles of various secondary routes in Davie County	April 8, 2015	October 2, 2015	Availability date April 27, 2015	\$284,636	Whitehurst Paving Co., Inc	
9SP.20855.2	Contract resurfacing - Asphalt Surface Treatment (AST) on 25.602 miles of various secondary routes in Stokes Co.	April 8, 2015	October 2, 2015	Availability date April 27, 2015	\$514,341	Whitehurst Paving Co., Inc	
9CR.10301.160 9CR.20301.160	Contract Resurfacing on 9.42 miles of Secondary routes in Davie Co.	June 10, 2015	November 6, 2015	Availability date July 20, 2015	\$1,350,000	TBD	Currently advertised for let
9SP.20305.2	Contract resurfacing - Asphalt Surface Treatment (AST retreatment) on 19.07 miles of various secondary routes in Davie Co.	June 10, 2015	May 20, 2016	Availability date July 20, 2015		TBD	Currently advertised for let
9SP.20855.3	Contract resurfacing - Asphalt Surface Treatment (AST retreatment) on 25.98 miles of various secondary routes in Stokes Co.	June 10, 2015	May 20, 2016	Availability date July 20, 2015		TBD	Currently advertised for let
Projects Under Development							
B-4819	Replace Bridge #105 over Snow Creek on SR 1697 (Pitzer Rd.) in Stokes County	July, 2018	TBD	ROW July, 2017	\$1,700,000	TBD	Schedules based on DRAFT 2015-2025 STIP Planning and Design in progress.
B-5509	Replace Bridge #62 over Neatman Creek on SR 1961 (Payne Rd.) in Stokes County	Oct., 2019	TBD	ROW Oct., 2018	\$2,025,000	TBD	Schedules based on DRAFT 2015-2025 STIP
B-5766	Replace Bridge #82 over the Dan River on SR 1674 (Sheppard Mill Rd.) in Stokes County	FY 2022	TBD	ROW FY 2021	\$4,350,000	TBD	Schedules based on DRAFT 2015-2025 STIP

WBS / TIP No.	Description	Let Date	Completion Date	Status	Construction Cost	Contractor	Comments
Projects Under Development							
B-5768	Replace Bridge #38 over Cedar Creek on NC 801 in Davie County	FY 2024	TBD	ROW FY 2023	\$865,000	TBD	Schedules based on DRAFT 2015-2025 STIP
B-5784	Replace Bridge #125 over North Double Creek on SR 1484 (Dan George Rd) in Stokes County.	FY 2025	TBD	ROW FY 2024	\$1,085,000	TBD	Schedules based on DRAFT 2015-2025 STIP
I-5765	Pavement Rehabilitation on I-40 from 1.5 mi. E. of US 64 to 1.2 mi. E. of SR 1410 (Farmington Rd), in Davie County.	FY 2017	TBD		\$11,283,000	TBD	Schedules based on DRAFT 2015-2025 STIP Coordinate with I-5823
I-5794	Pavement Rehabilitation on I-40 from 1.5 mi. E. of SR 1442 (Redland Rd) to 1.4 mi. E. of NC 801, in Davie County.	FY 2018	TBD		\$1,505,000	TBD	Schedules based on DRAFT 2015-2025 STIP
I-5823	Pavement Rehabilitation on I-40 from 1 mi. E. of SR 1143 (Davie Academy Rd) to 0.7 mi. E. of US 601, in Davie County.	FY 2019	TBD		\$11,381,000	TBD	Schedules based on DRAFT 2015-2025 STIP Coordinate with I-5765
I-5887	US 52 / Future I-74 at SR 1102 (Trinity Ch. Rd) - Convert existing grade separation to a full movement interchange	FY 2025	TBD	ROW FY 2024	\$10,260,000	TBD	Schedules based on DRAFT 2015-2025 STIP
R-5728	Intersection Improvements on US 601 at S. Salisbury St. in Mocksville in Davie County.	FY 2018	TBD	ROW FY 2017	\$1,875,000	TBD	Schedules based on DRAFT 2015-2025 STIP
R-5736	Widen to Multi-lanes - US 601 from SR 1345 (Blaise Church Rd) to SR 1408 (Cana Rd) in Davie County.	FY 2022	TBD	ROW FY 2021	\$6,042,000	TBD	Schedules based on DRAFT 2015-2025 STIP
17BP.9.P.3	Bridge Painting on Bridges #136, 150 in Davidson; #'s 29,32,85,86 in Davie; #'s 53,54,55,78,115,185,297,322 in Forsyth; and #94 in Rowan County.	TBD	TBD		\$5,000,000	TBD	Funding source has changed. Will need to determine plan revisions and new letting date.
17BP.9.R.5	Replace Bridge #58 over Ricker's Branch on US 311 in Stokes County	June, 2015	TBD	Finalizing proposal for advertisement	\$600,000	TBD	
17BP.9.R.22	Replace Bridge #103 over Branch of Dan River on SR 1707 (Stewart Rd) in Stokes County.	Dec., 2015	TBD	ROW Acquisition in progress	\$200,000	TBD	All plans complete, awaiting final ROW acquisition
17BP.9.R.25	Replace Bridge #83 over Fork of Cedar Creek on SR 1436 (Pinebrook School Rd) in Davie County.	June, 2015	TBD	75% Plans Complete	\$400,000	TBD	ROW acquisition in progress; one parcel remaining
17BP.9.R.27	Replace Bridge #11 over East Prong of Yadkin River on SR 1166 (YMCA Camp Rd) in Stokes County.	August, 2015	TBD	90% Plans Complete	\$475,000	TBD	Due to utility issues let date has been delayed until August, 2015. Awaiting utility relocation plans for Duke Energy.
17BP.9.R.41	Replace Bridge #176 over Lick Creek on SR 1926 (Fagg Rd) in Stokes County.	FY 2016 Funding Dependent	TBD	90% Plans Complete	\$623,000	TBD	

WBS / TIP No.	Description	Let Date	Completion Date	Status	Construction Cost	Contractor	Comments
Completed Projects							
17BP.9.R.28	Replace Bridge #98 over Sandy Branch on SR 1945 (Rosebud Rd) in Stokes County.	June 25, 2014	Dec. 5, 2014 <i>(perm. Vegetation established by April 17, 2015)</i>	100% Complete	\$438,826	APAC-Atlantic, Inc. Thompson Arthur Division	
9CR.10301.150 9CR.20301.150	Milling, Resurfacing, and Shoulder Reconstruction on NC 801 and 4 Secondary routes in Davie County	June 11, 2014	Nov. 15, 2014	100% Complete	\$1,601,556	APAC-Atlantic, Inc. Thompson Arthur Division	
9CR.10851.150 9CR.20851.150	Milling, Resurfacing, and Shoulder Reconstruction on NC 89 from NC 66 to Surry Co., NC 704 from NC 8 to SR 1434 (Aaron's Corner Ch. Rd), and 8 sections of Secondary routes in Stokes County	July 17, 2014	May 29, 2015	100% Complete	\$2,259,560	APAC-Atlantic, Inc. Thompson Arthur Division	
43675	Construction of sidewalks, milling, paving, curb & gutter, curb ramps and Thermoplastic for Crosswalks along US 311 (Main St.) from Brookcove Rd./Third St. to Walnut Cove Shopping Center in Walnut Cove, Stokes County	April, 2014	Oct.13, 2014	100% Complete	\$317,327	Reliable Concrete Construction	
U-5540	Construction of new Access Road off SR 1345 (Interstate Dr) to serve new manufacturing site in Mocksville. Includes construction of Bridge #129 over Unnamed Tributary to Bear Creek on Gildan Dr on SR 1345 (Interstate Dr) in Davie County (42679.3.D1)	Oct. 22, 2014	May 31, 2015	Bridge 100% Complete Roadway 100% Complete	Total cost \$1,750,000 Bridge Contract \$246,894	Roadway work by State Forces Bridge construction by Smith-Rowe, LLC	