



Davie County Comprehensive Land Development Plan

Growth Strategy Sub-Committee

5.9.18 • Davie County Development Services

Jesse Day, Planning Director

Joe Furstenberg, Regional Planner

Cameron Colvin, Regional Planner

Lawrence Holdsworth, Regional Planner



PIEDMONT TRIAD
REGIONAL COUNCIL



Purpose

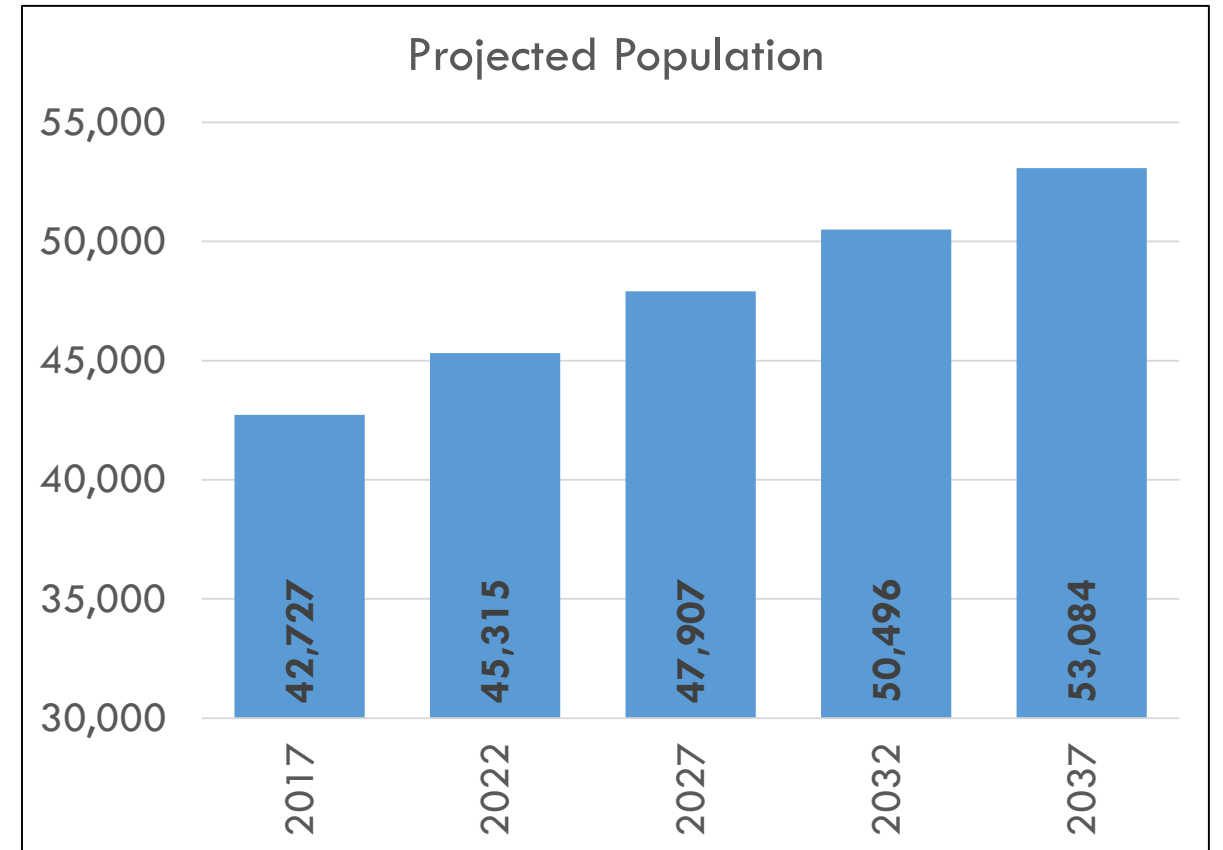


Updated Housing and Employment Data



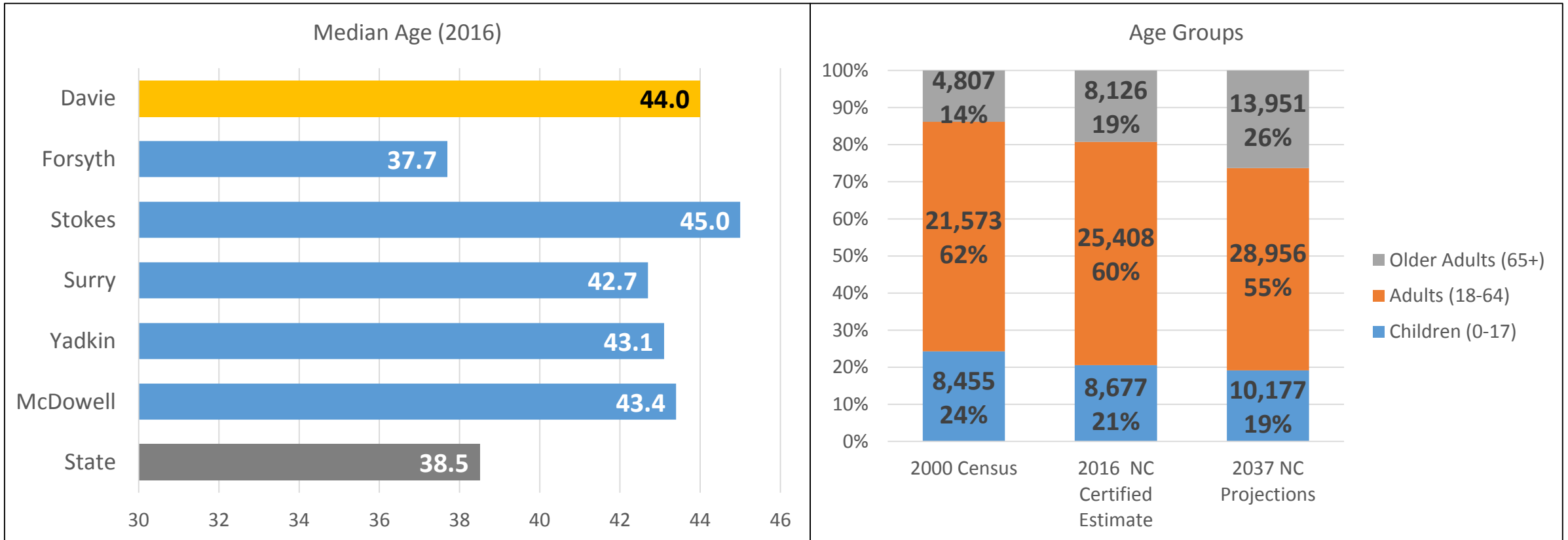
Projected Population

- Over the next 20 years, Davie County's population will grow 24% to over 53,000 residents.
- Higher than Forsyth County's growth rate (21%) and the State (22%).
- Other sources (Woods and Poole) project a population of 64,000 by 2050

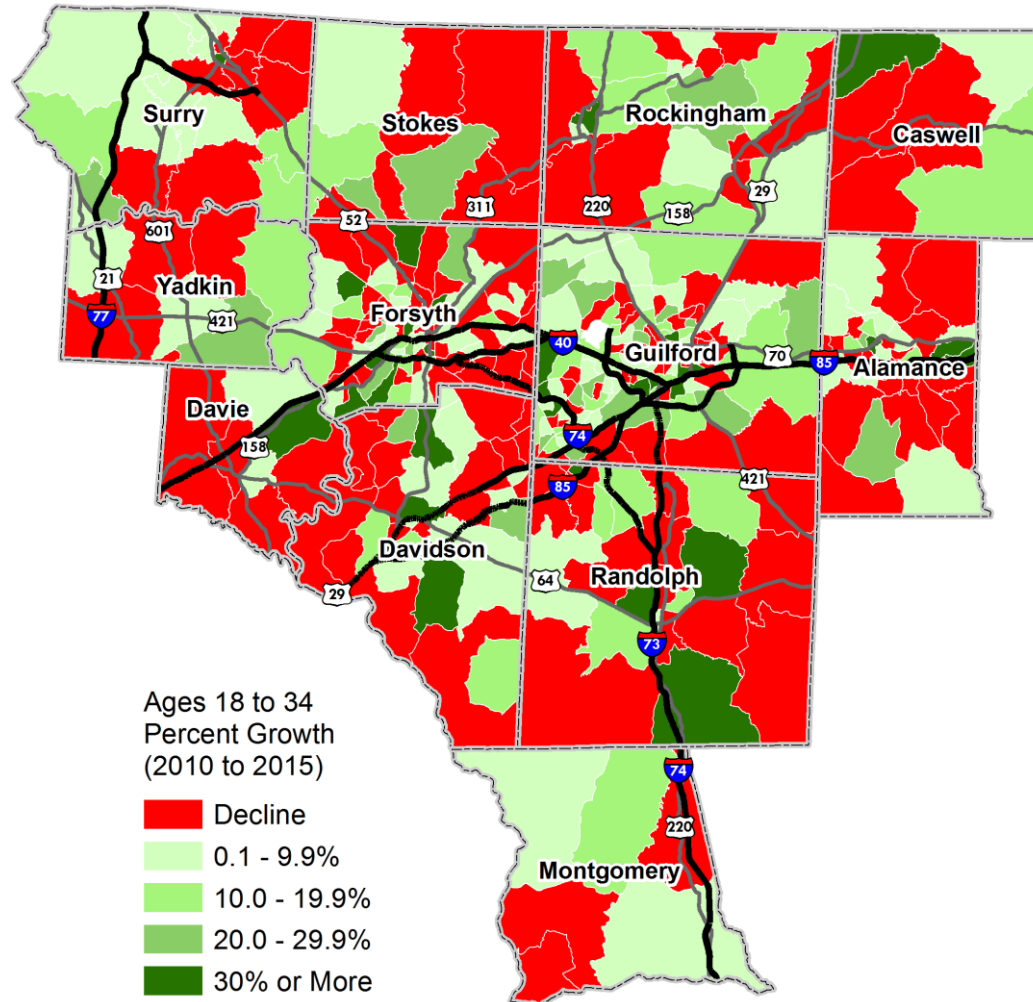


Age of the Population

- County population is aging
- Older adult age group is the fastest growing

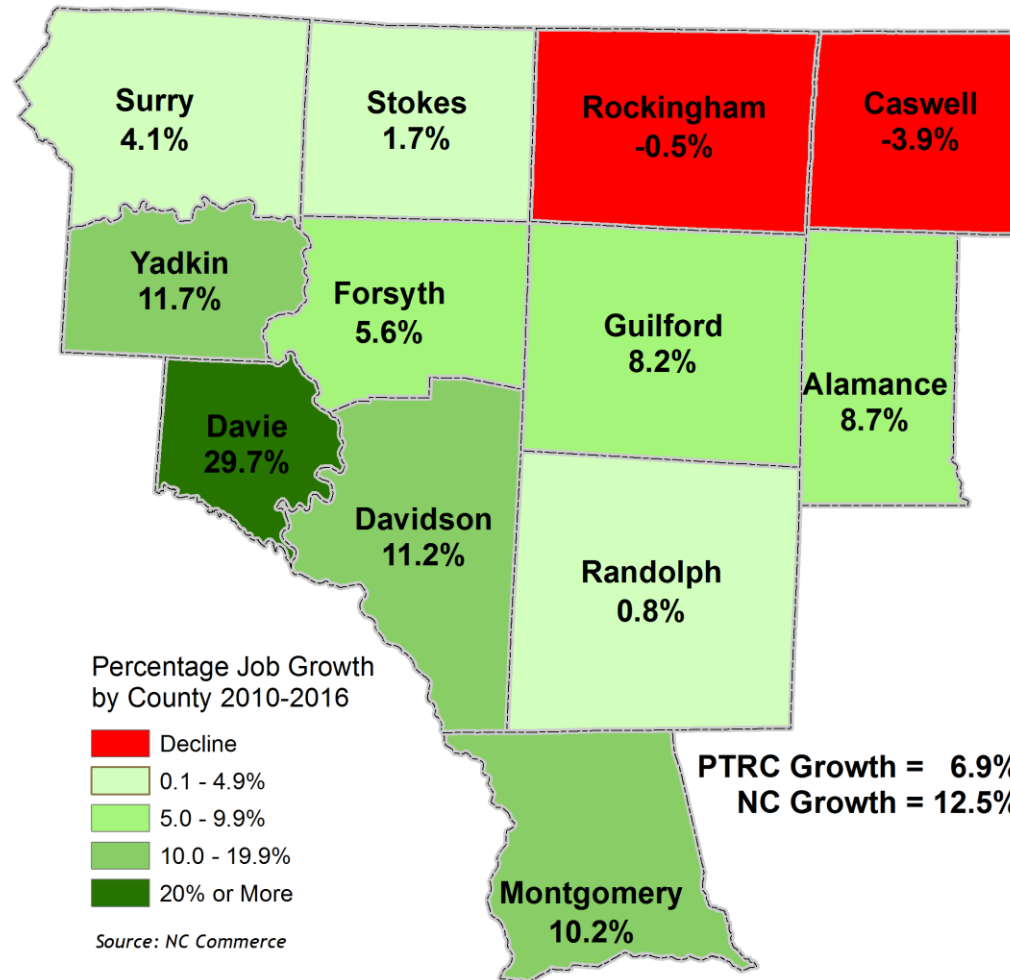


Region's Population Growth By Census Tract



**Population
Growth
Ages 18-34
2010-2015**

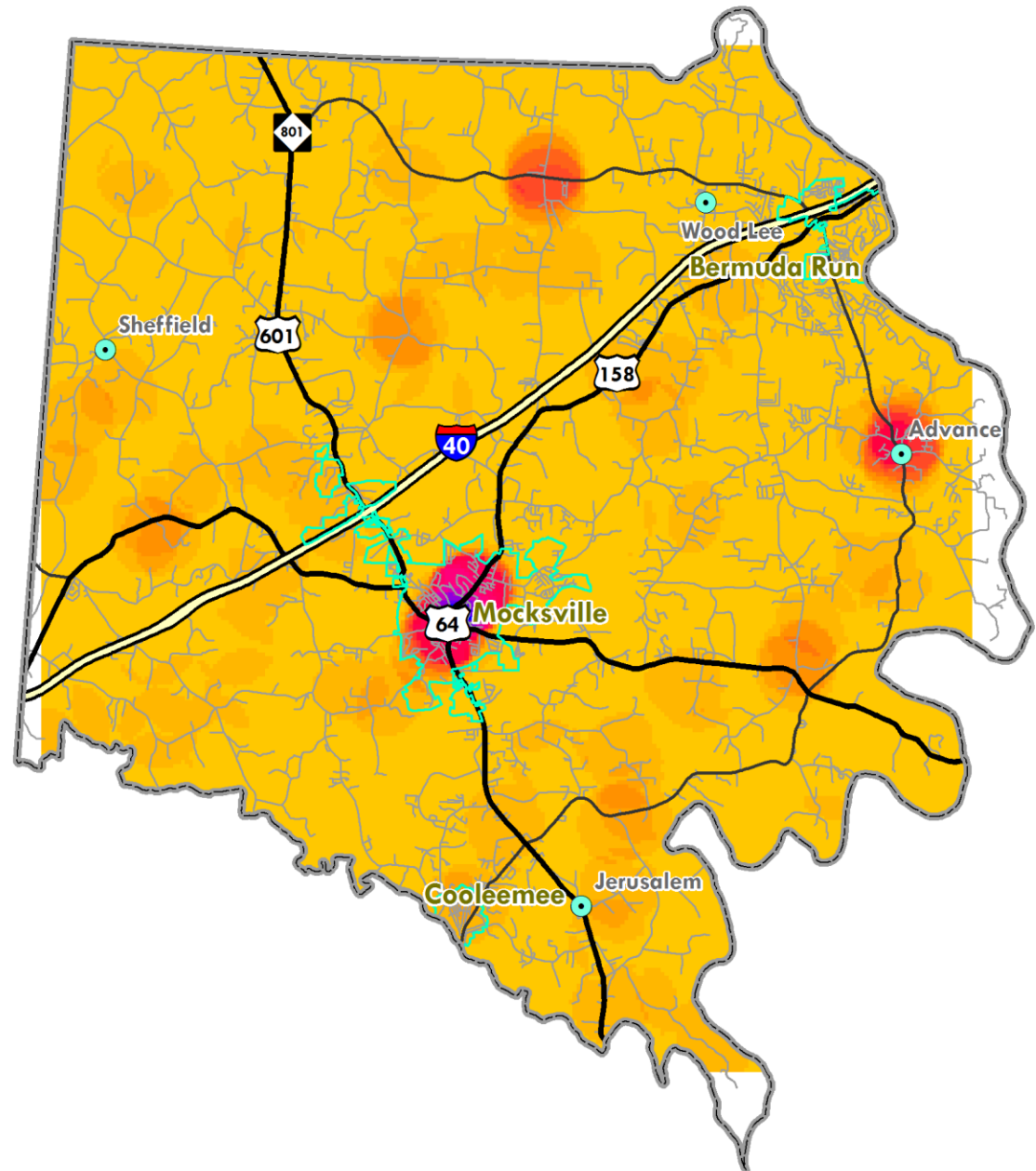
Region's Job Growth By County



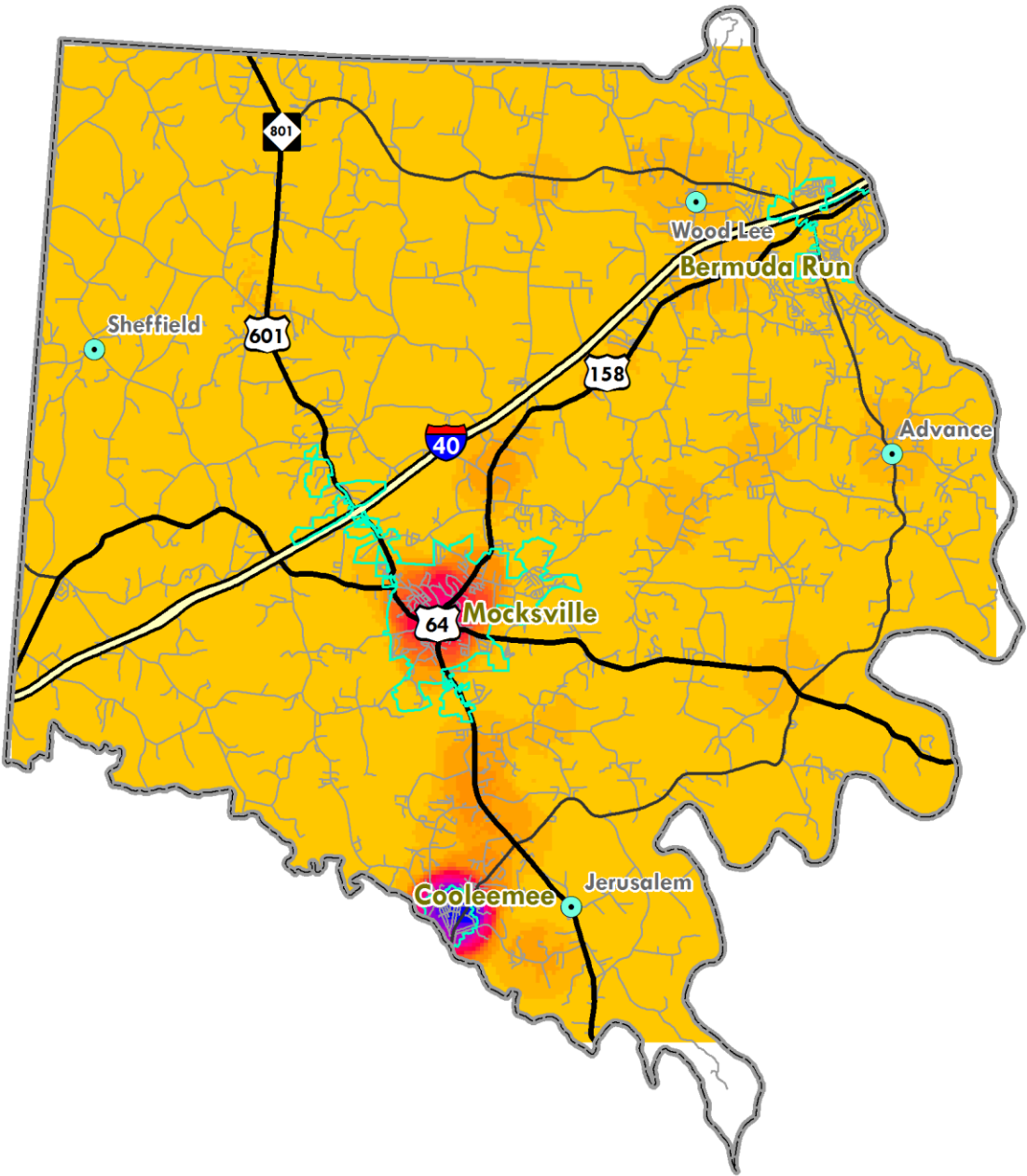
**JOB GROWTH
BY COUNTY
2010 – 2016**

PTRC Growth = 6.9%
NC Growth = 12.5%

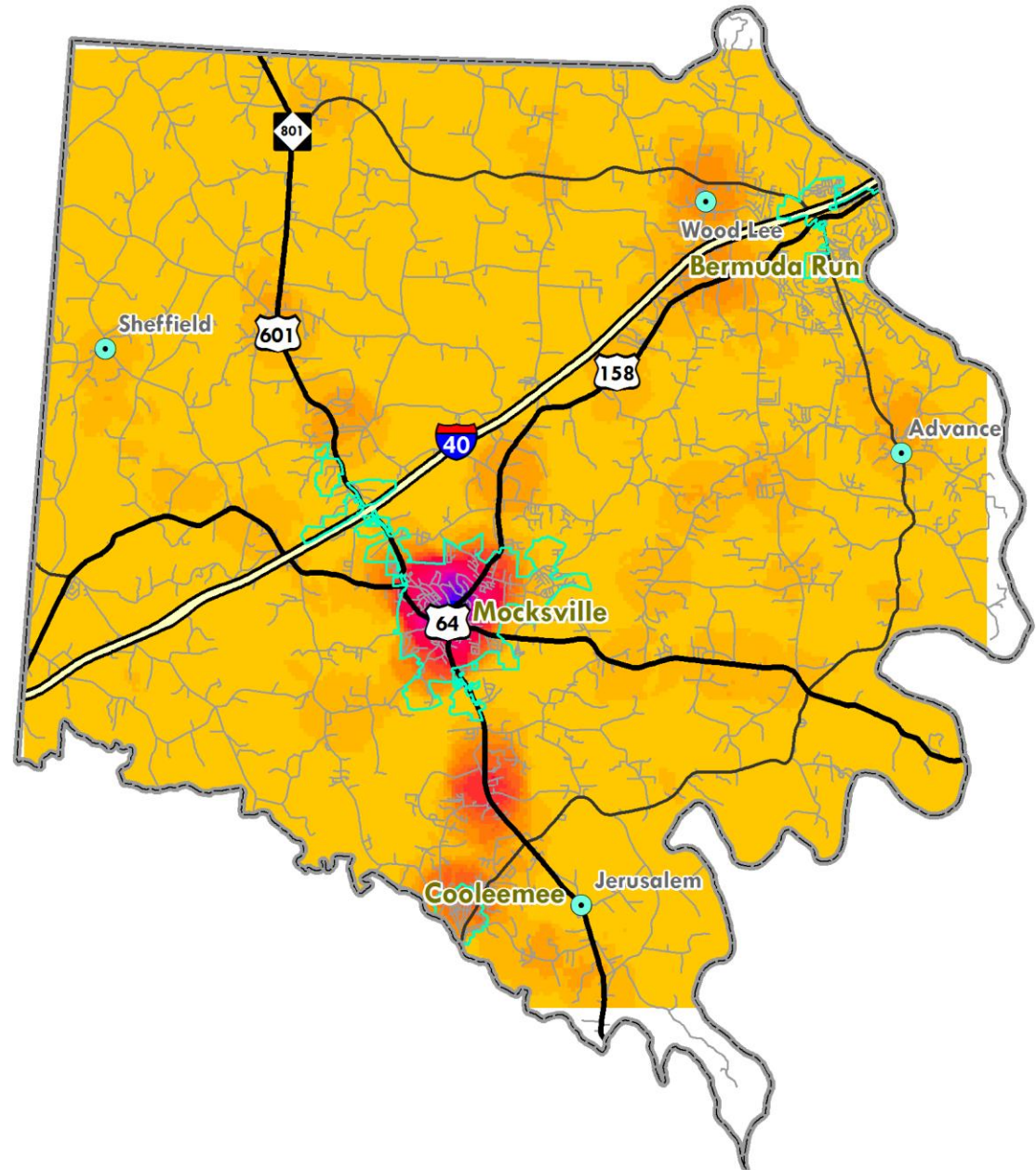
Year Built: Housing 1800's



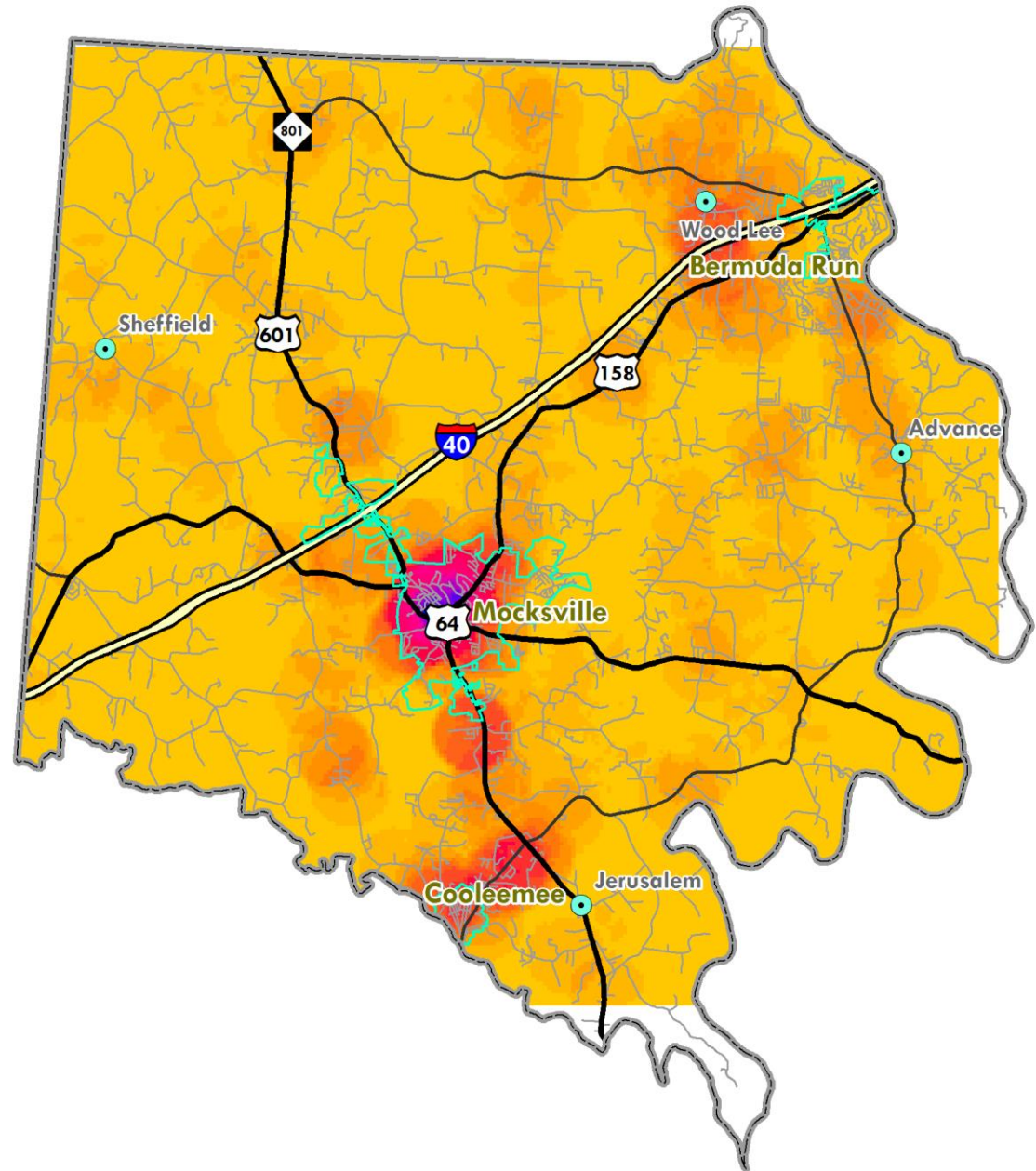
Year Built:
1900-1949



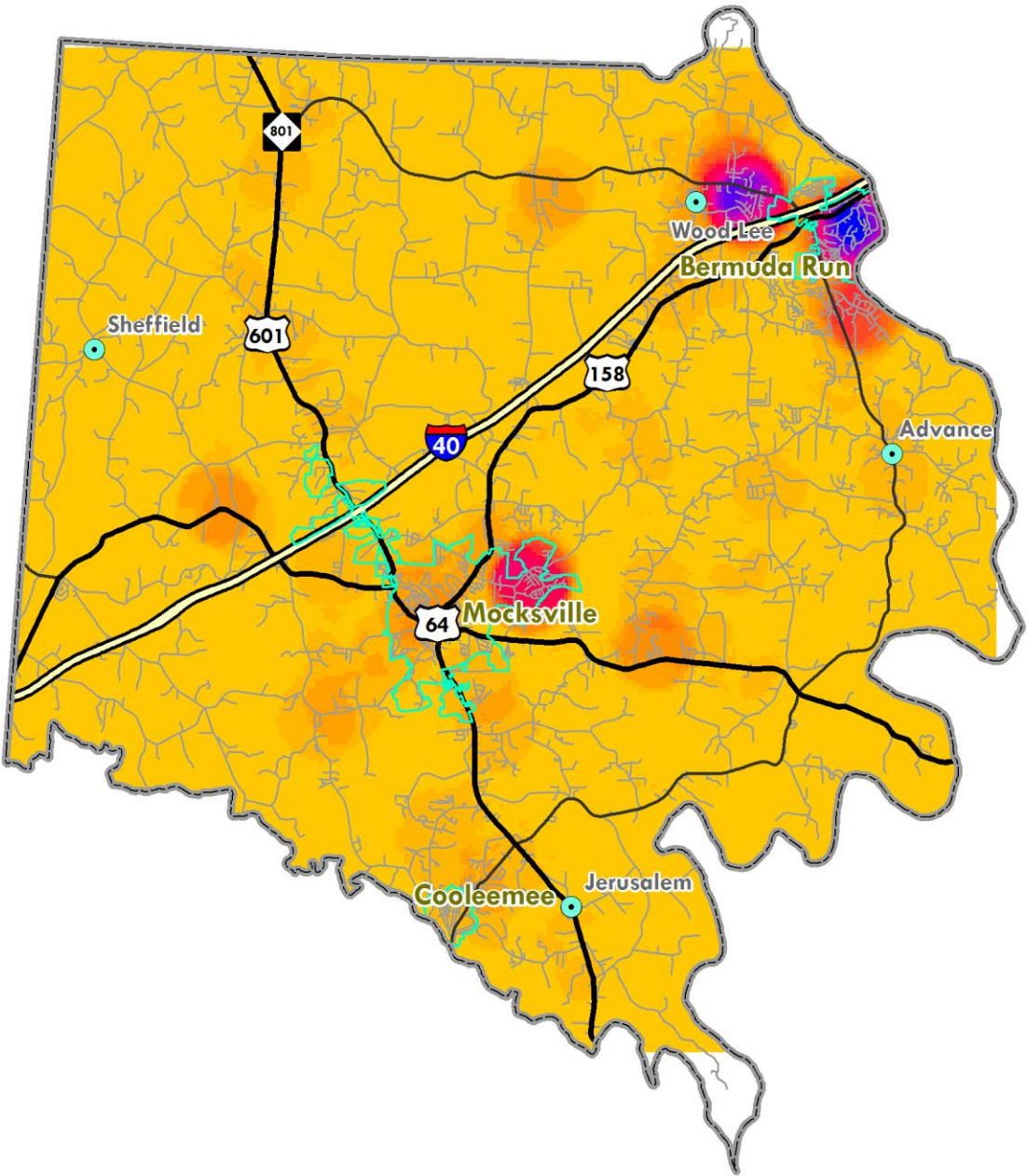
Year Built:
1950-1959



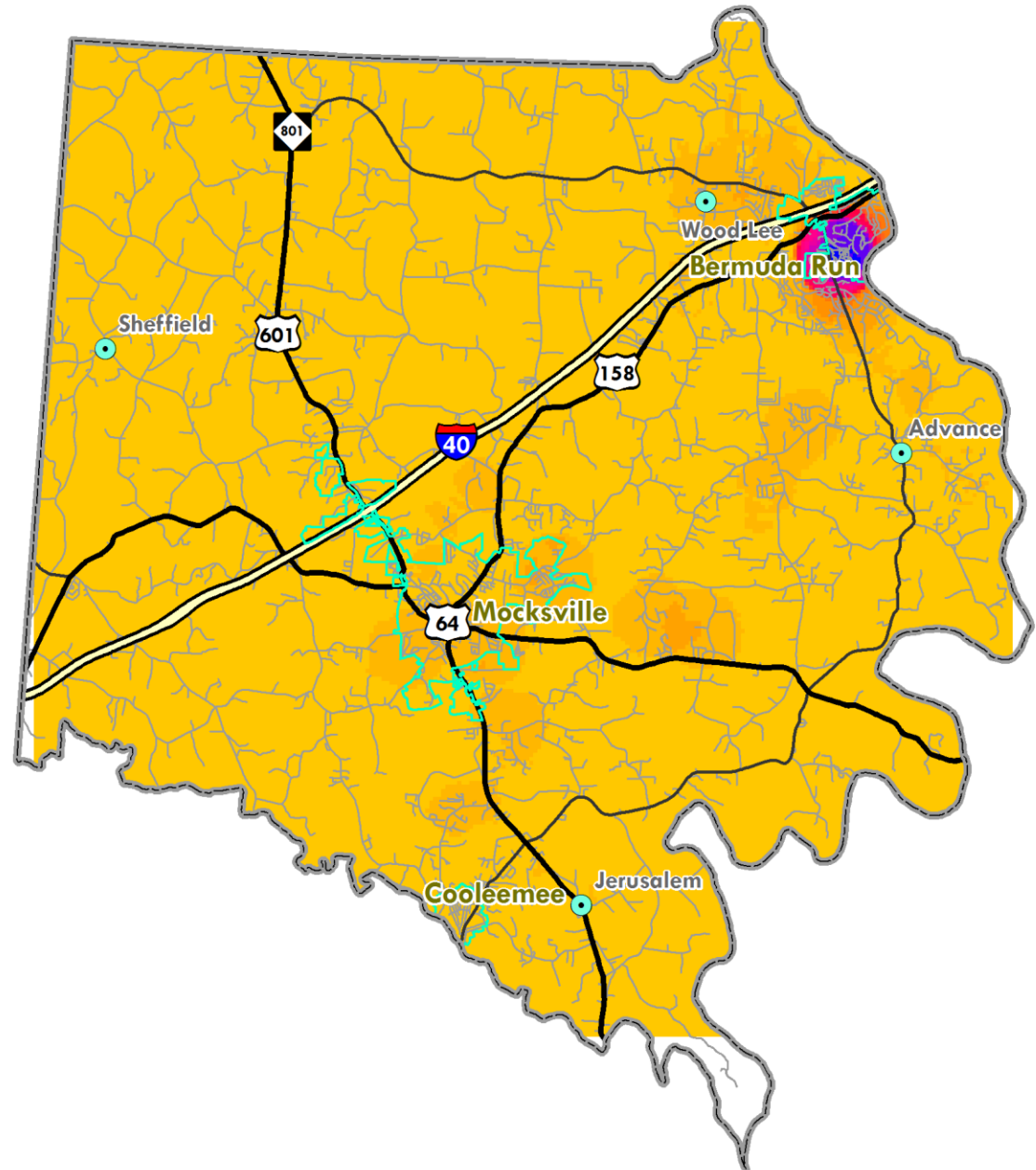
Year Built:
1960-1969



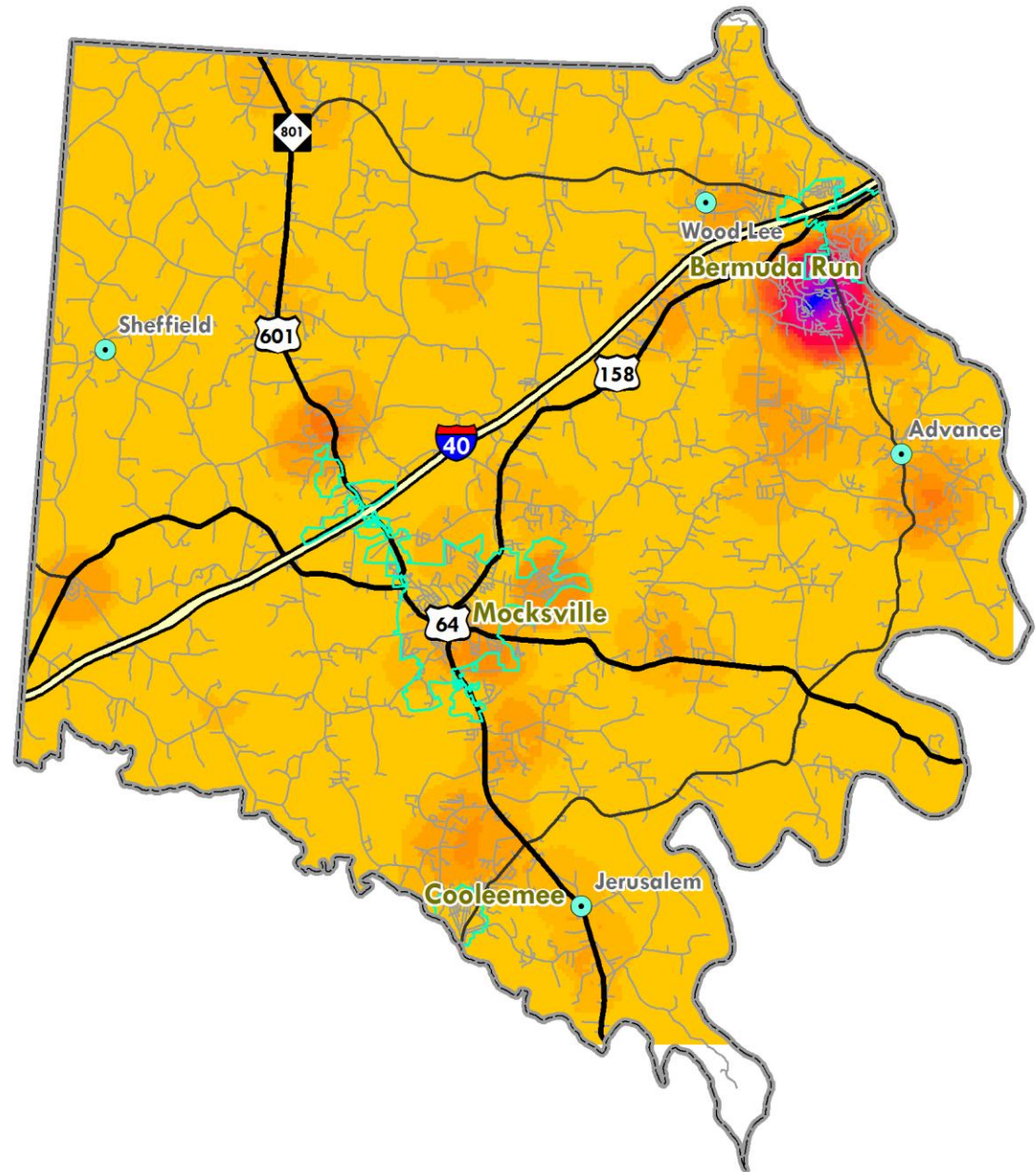
Year Built:
1970-1979



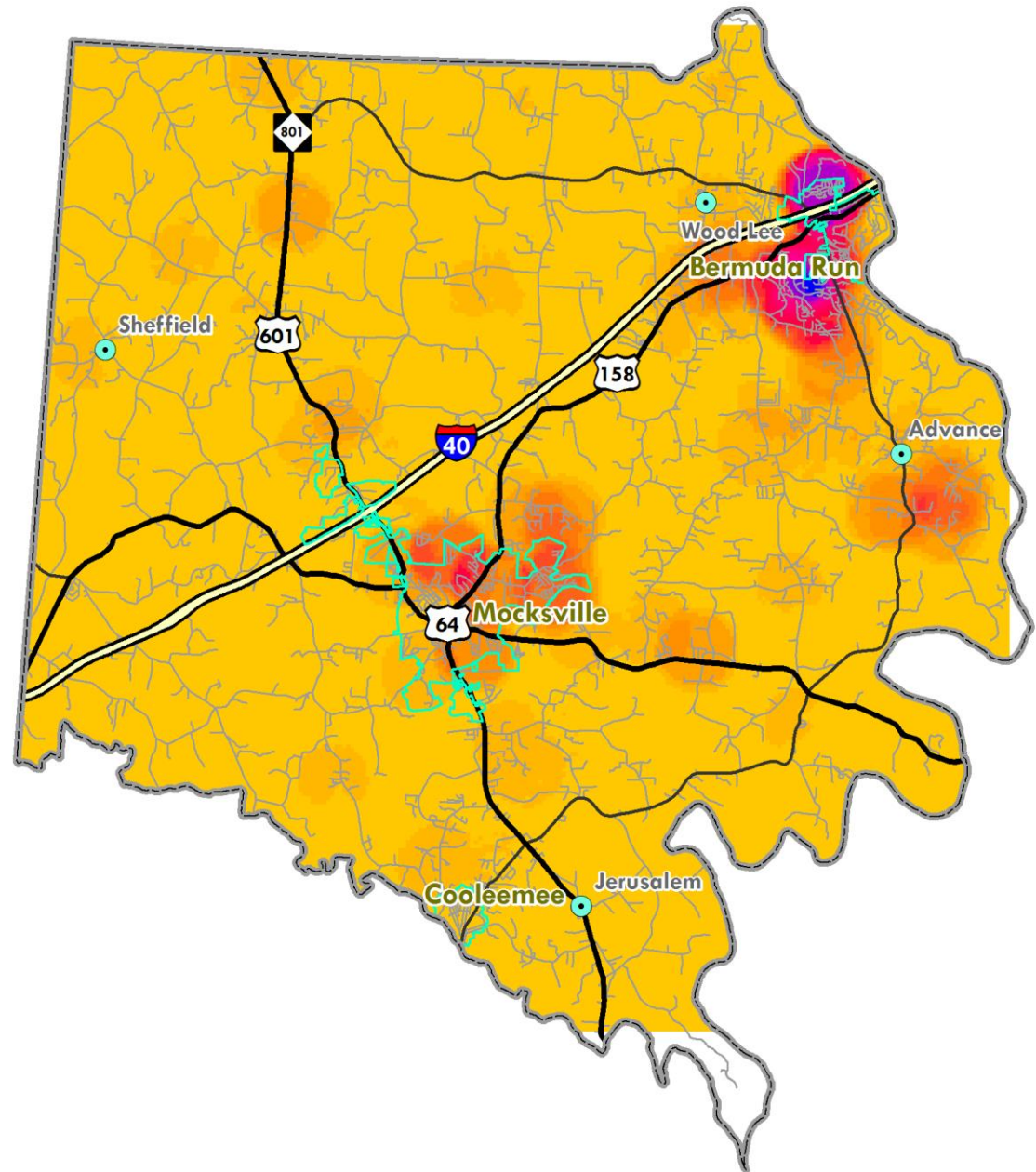
Year Built:
1980-1989



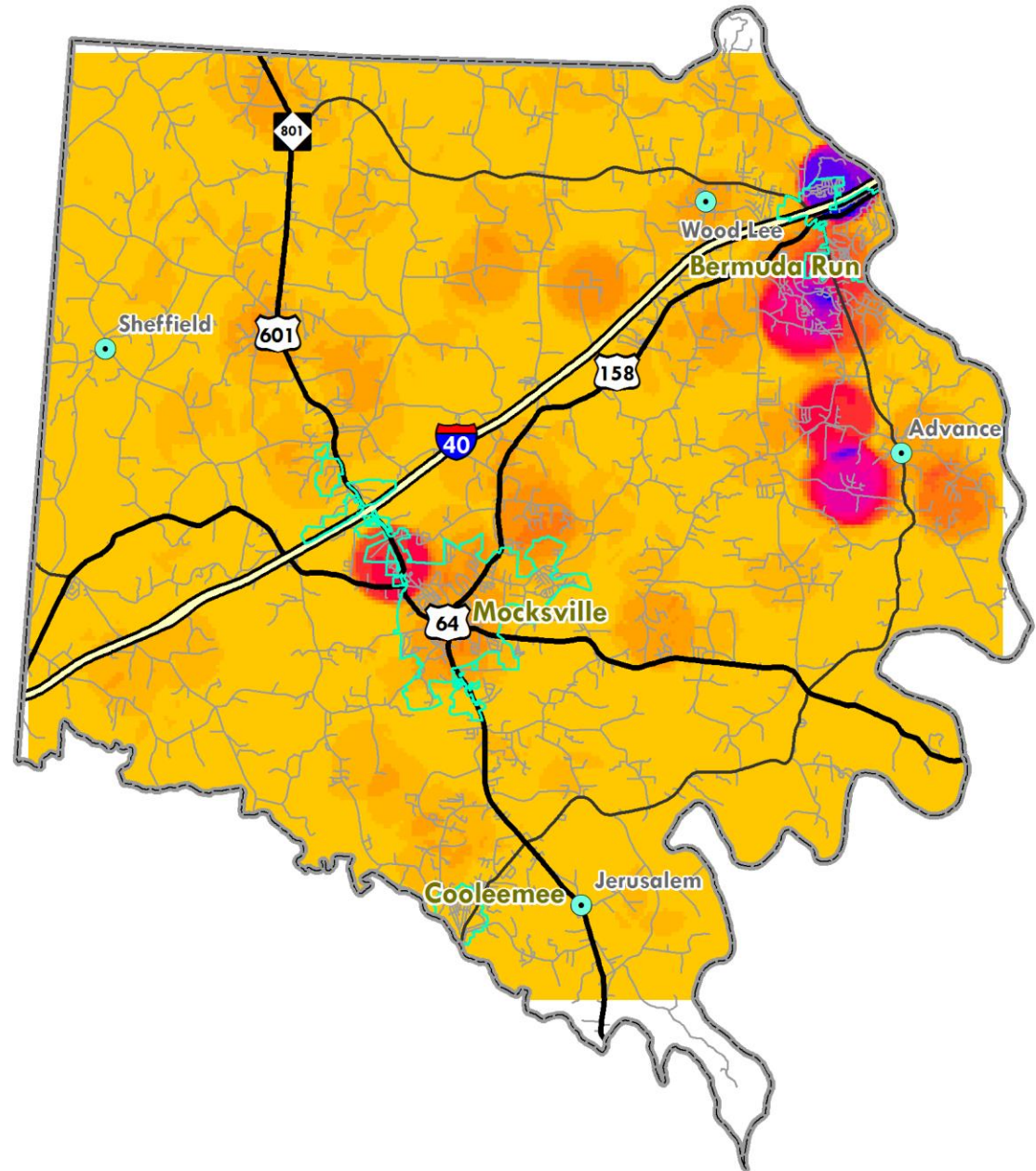
Year Built:
1990-1999



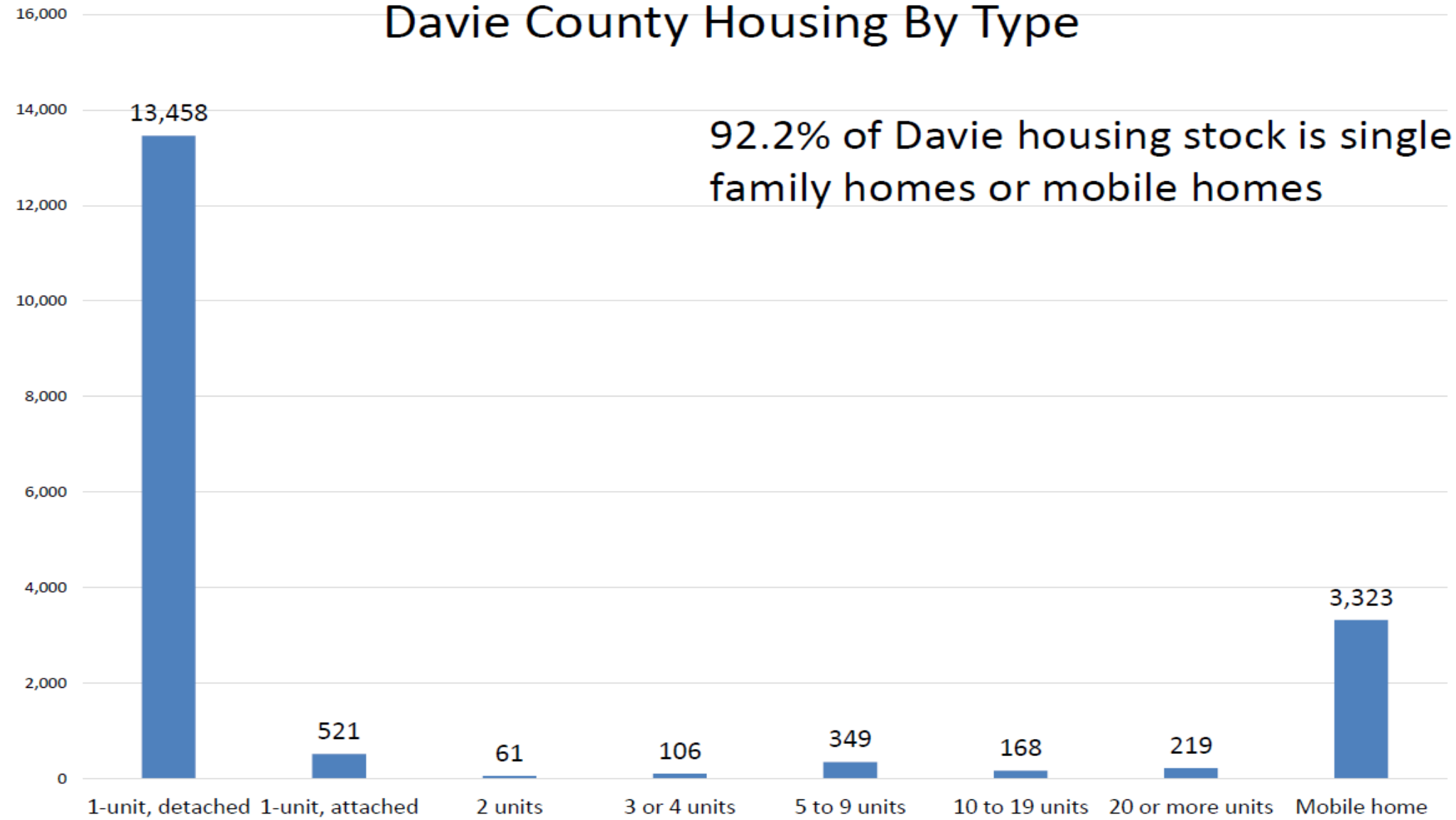
Year Built:
2000-2009



Year Built:
2010-2017

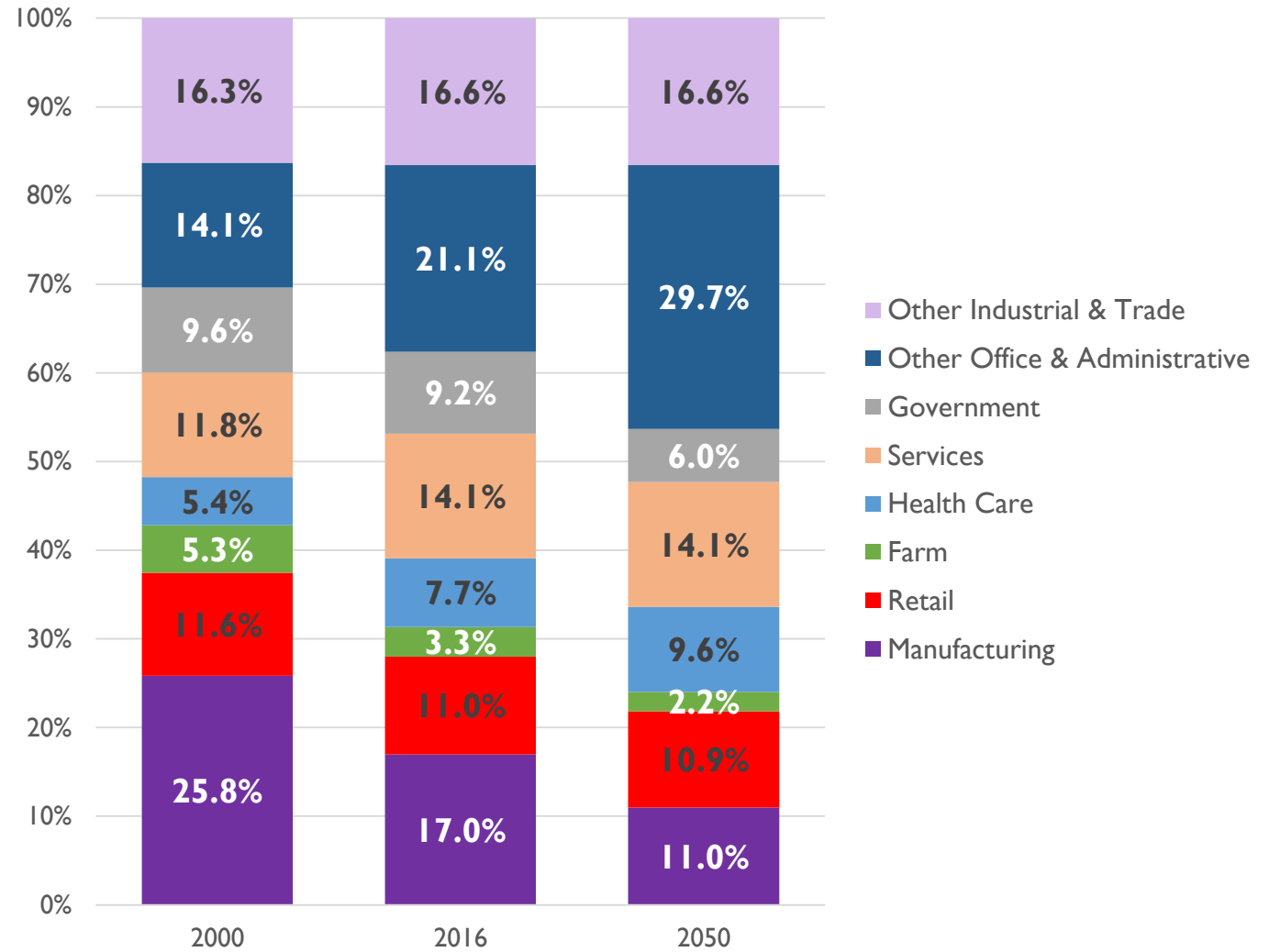


Davie County Housing By Type

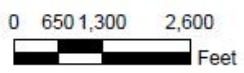
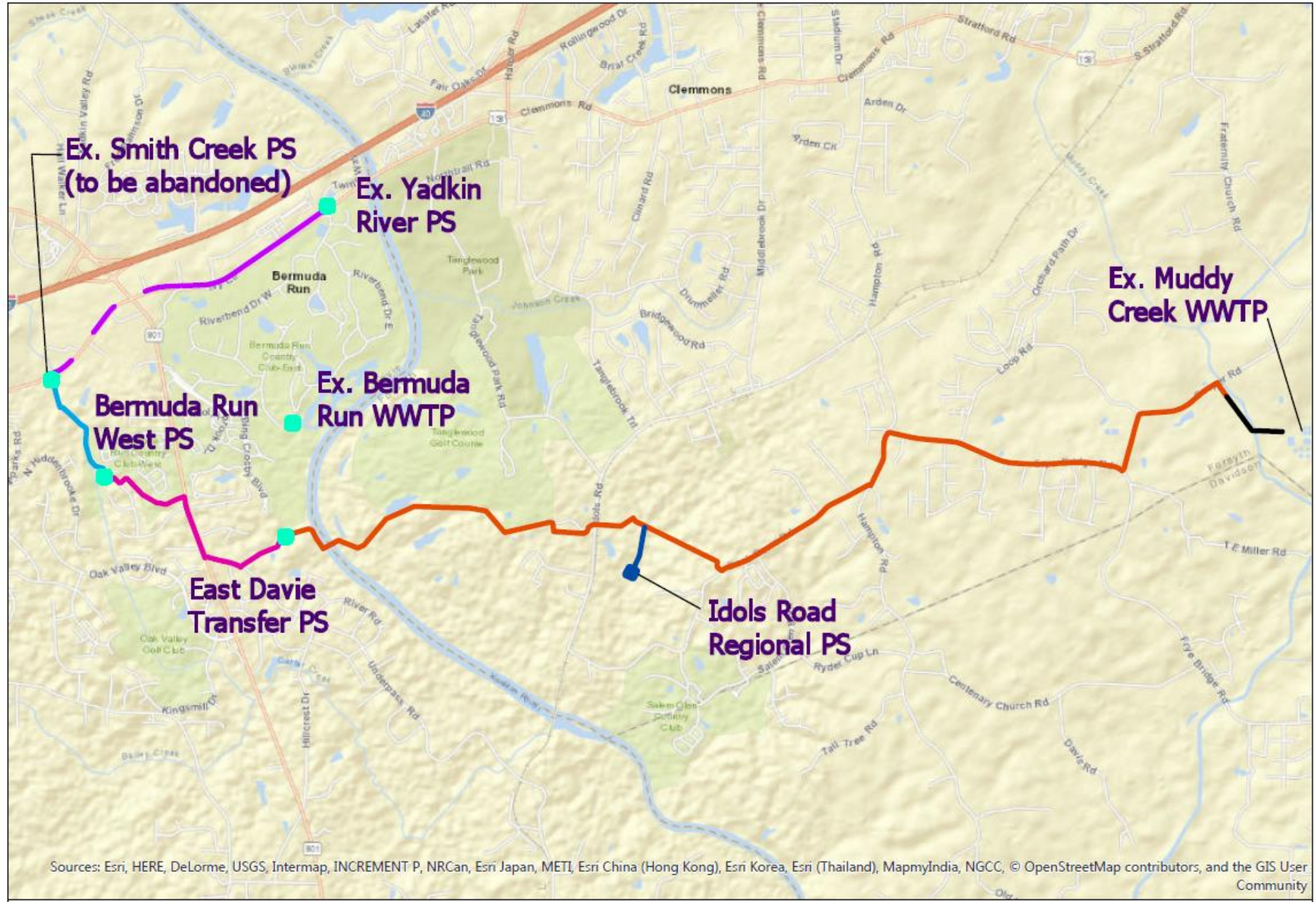


Source: US Census Bureau

Job Projections By Sector 2050



Wastewater System Upgrades 2018-2020

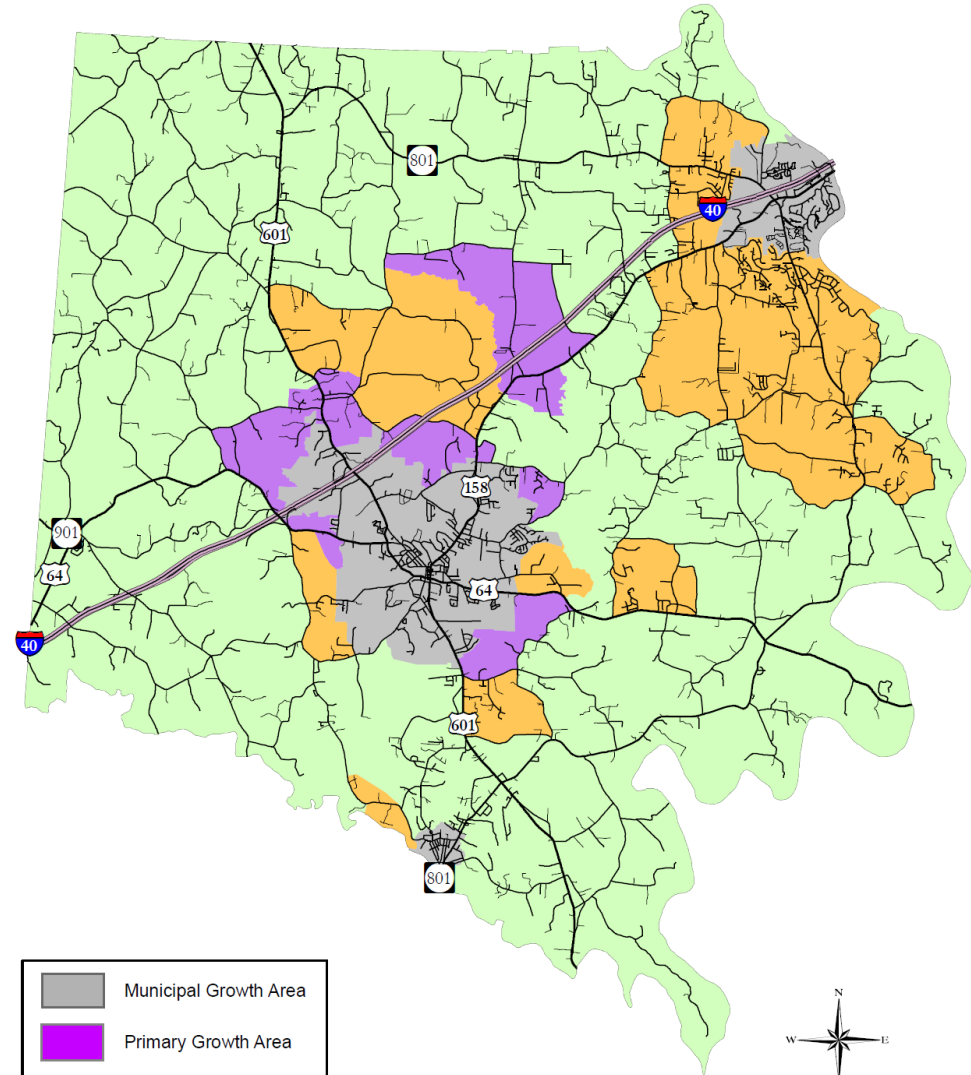


OVERALL PROJECT LOCATION EAST DAVIE WASTEWATER COLLECTION SYSTEM

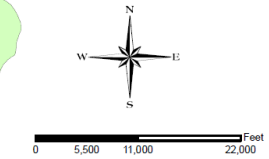


2010 Growth Enhancement Strategy Map

Growth Enhancement Map



- Municipal Growth Area
- Primary Growth Area
- Secondary Growth Area
- Rural Growth Area
- Conservation Area

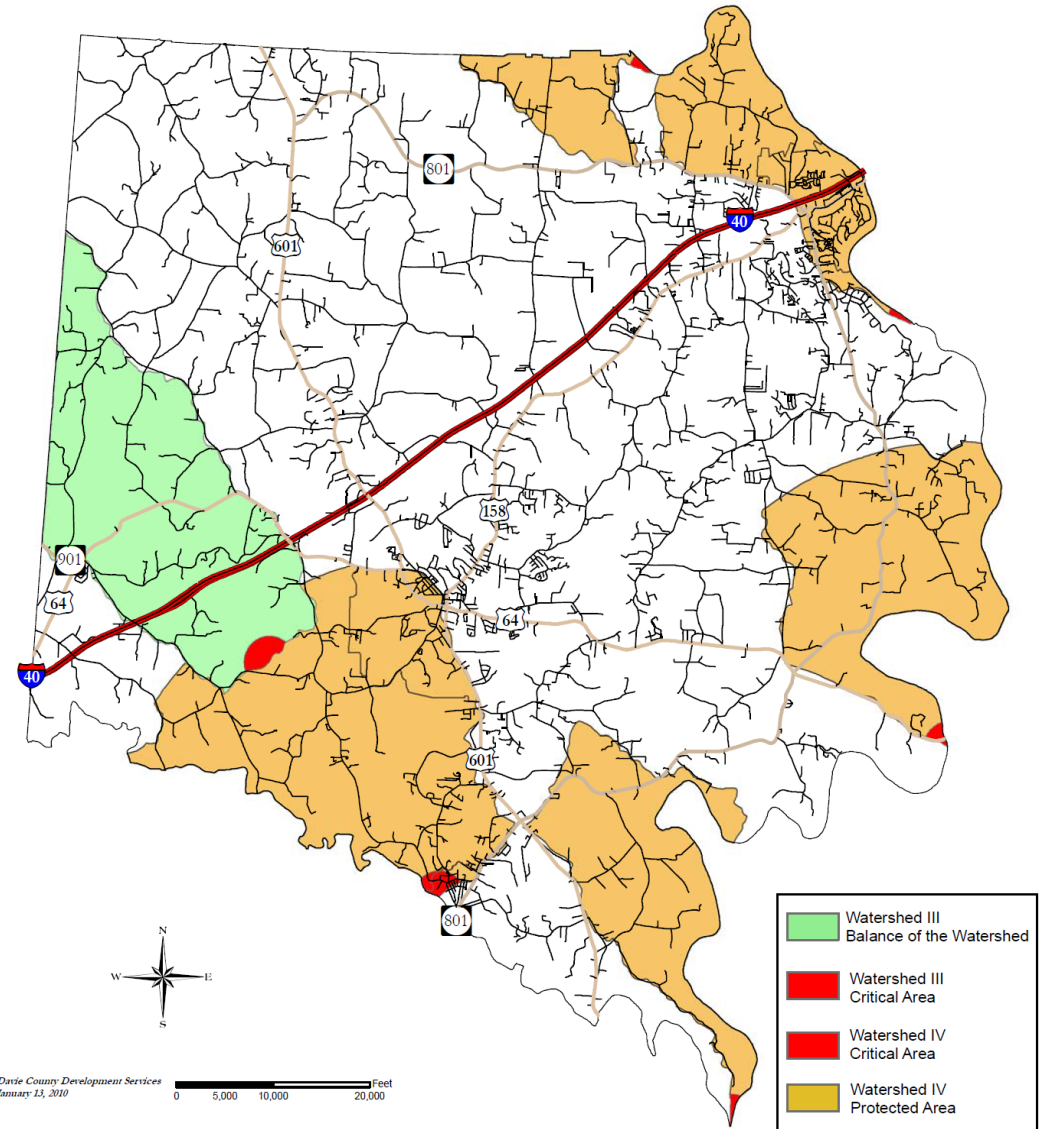


Davie County Development Services
February 3, 2010

Davie County has compiled this map from various sources and makes no warranties or representations, expressed or implied, in fact or in law, including without limitation the implied warranties of merchantability and fitness for a particular purpose. Users are encouraged to notify the GIS Department of inconsistencies in the map so that corrections can be made in future printings.

2010 Growth Enhancement Strategy Watershed Map

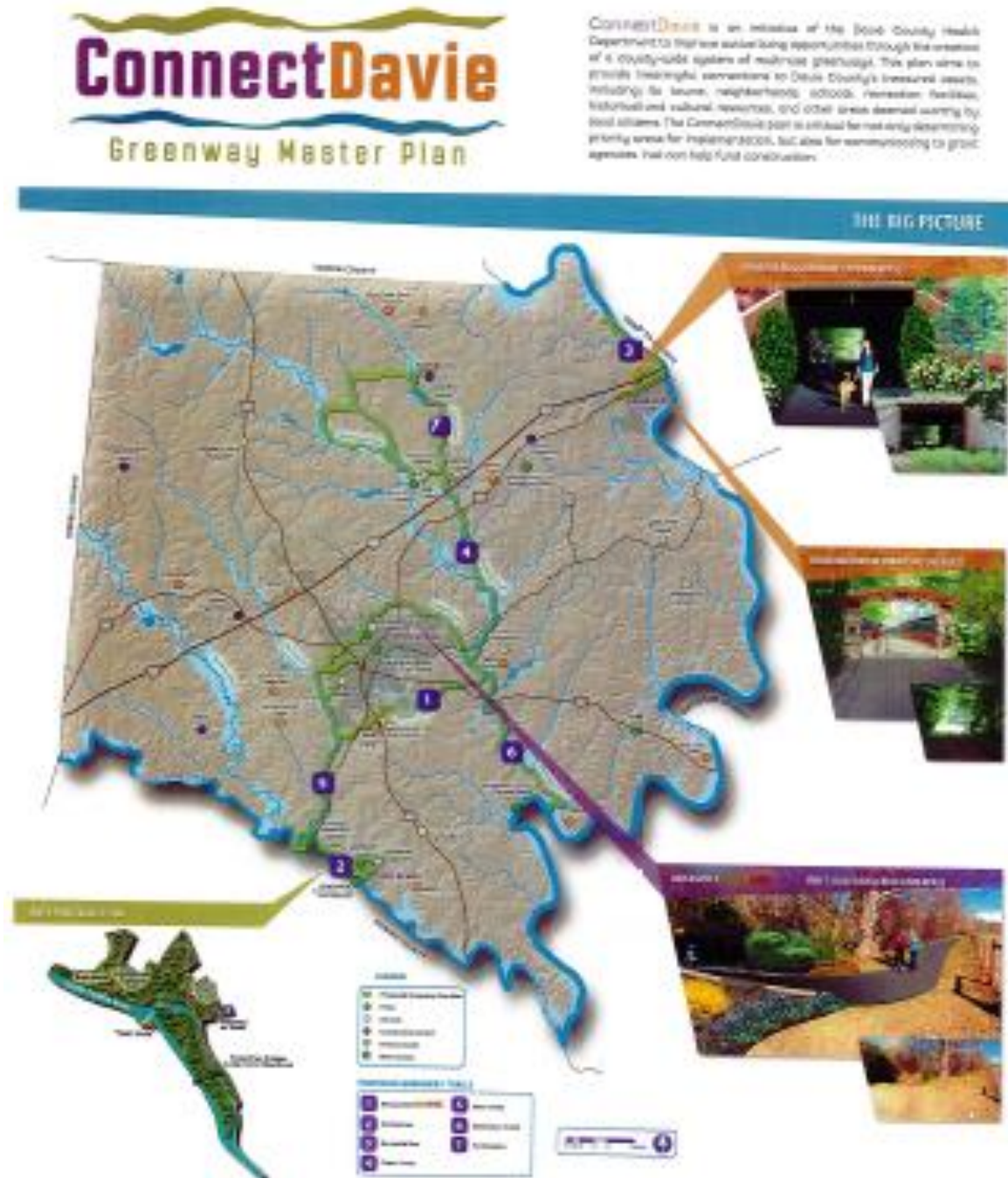
Davie County Watershed



Davie County Development Services
January 13, 2010

Davie County has compiled this map from various sources and makes no warranties or representations, expressed or implied, in fact or in law, including without limitations the implied warranties of merchantability and fitness for a particular purpose. Users are encouraged to notify the GIS Department of inconsistencies in the map so that corrections can be made in future printings.

Davie County Proposed Greenway Map



Thanks!

Jesse Day
jday@ptrc.org



PIEDMONT TRIAD
REGIONAL COUNCIL

336.904.3000 • www.ptrc.org