

An aerial photograph of a park area. A wide, light-colored paved path runs horizontally across the middle of the frame. To the right of the path, there is a dense area of green trees and bushes. The background shows a mix of greenery and what appears to be a parking lot or paved area. The overall scene is a well-maintained urban park space.

Downtown Stoneville Pocket Park

Paul Kron

Foothills Planning + Design, PLLC

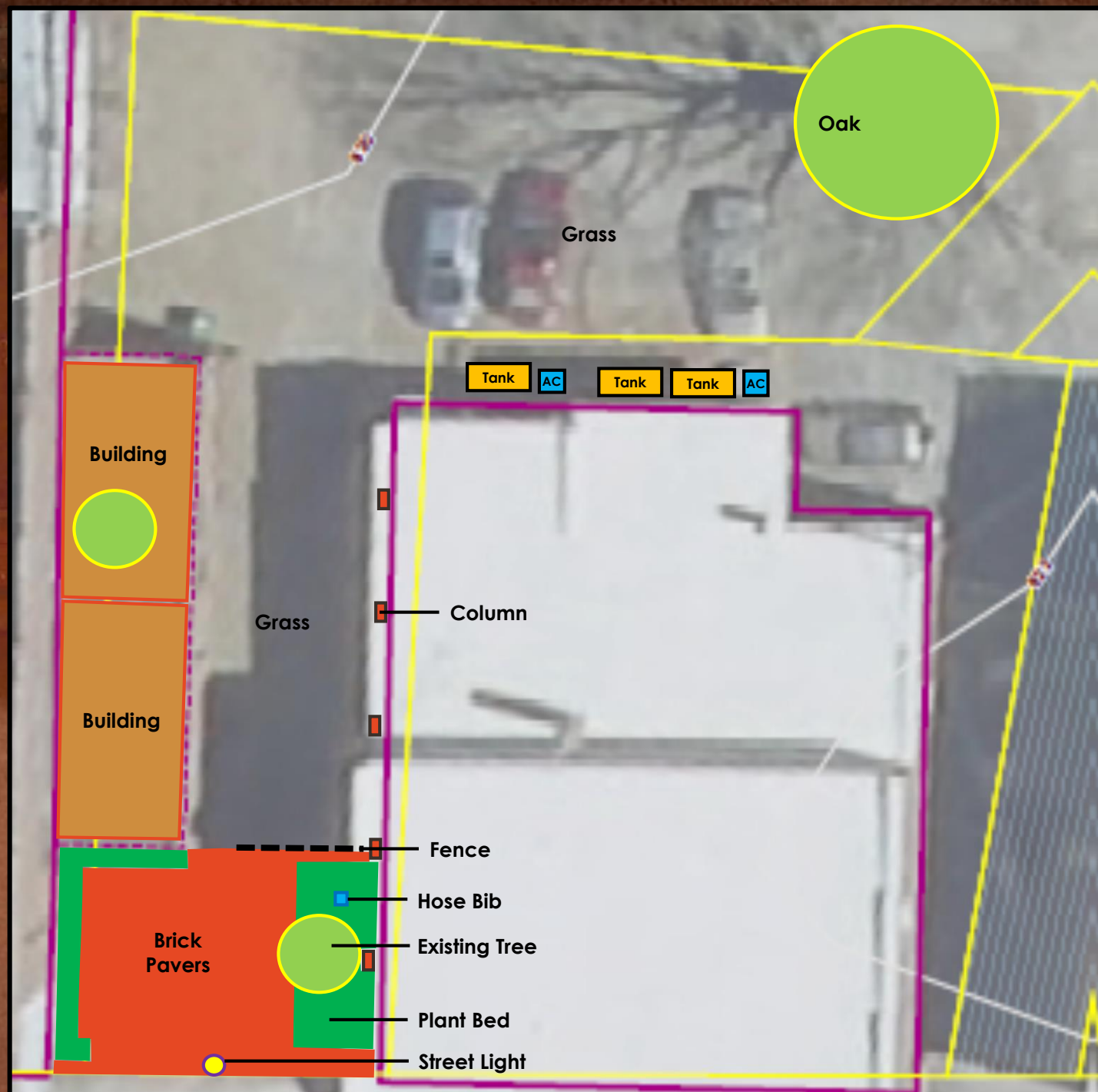
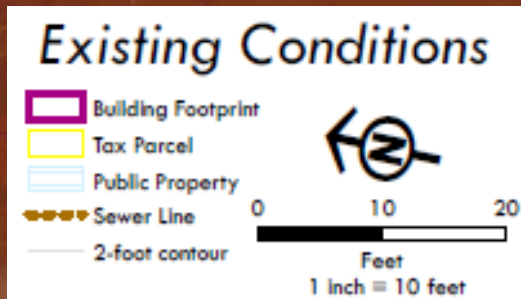
Project Timeline

- 5/11/17 – Core Group Meeting & Site Analysis
- 5/25/17 – Core Group / Community Meeting #1
- 6/8/17 – Core Group / Community Meeting #2
- 6/16/17 – Final Concept to Core Group for Review
- 7/14/17 – Construction Drawings & Product List
- 9/1/17 – Final Plans, Drawings & Cost Estimates
- 9/5/17 – Joint Council/Committee Meeting
- 12/31/17 – Complete Phase 1 Construction

Park Site Context



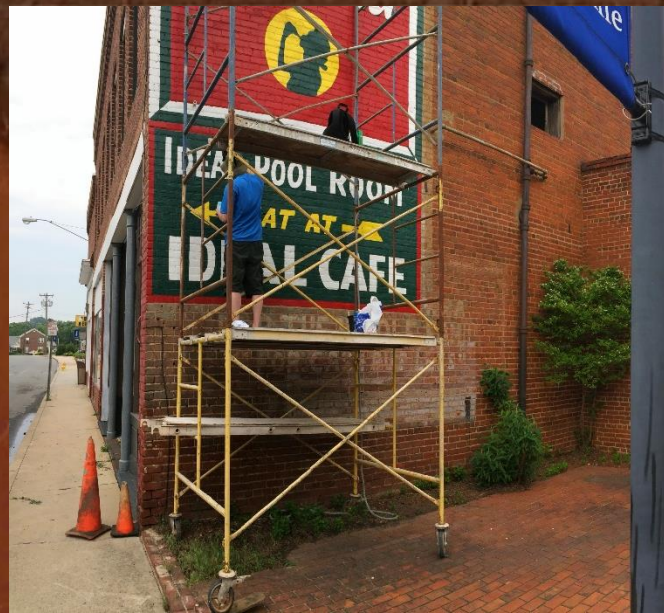
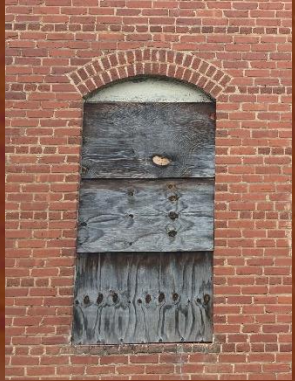
Existing Conditions



Park Site



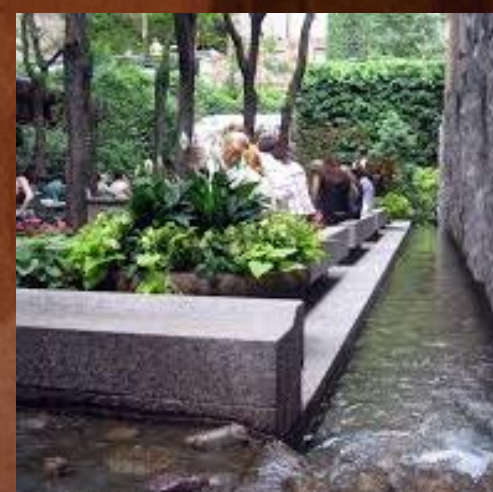
Park Site



Pocket Park Ideas...

- Rooms & Alcoves
- Doors & Windows
- Walls, Floors & Ceilings
- Stoops, Porches & Decks
- Circulation & Furnishings
- Materials & Textures
- Color & Lighting
- Sounds, Smells & Tastes
- Scale (Public/Private)
- Stoneville's Story?





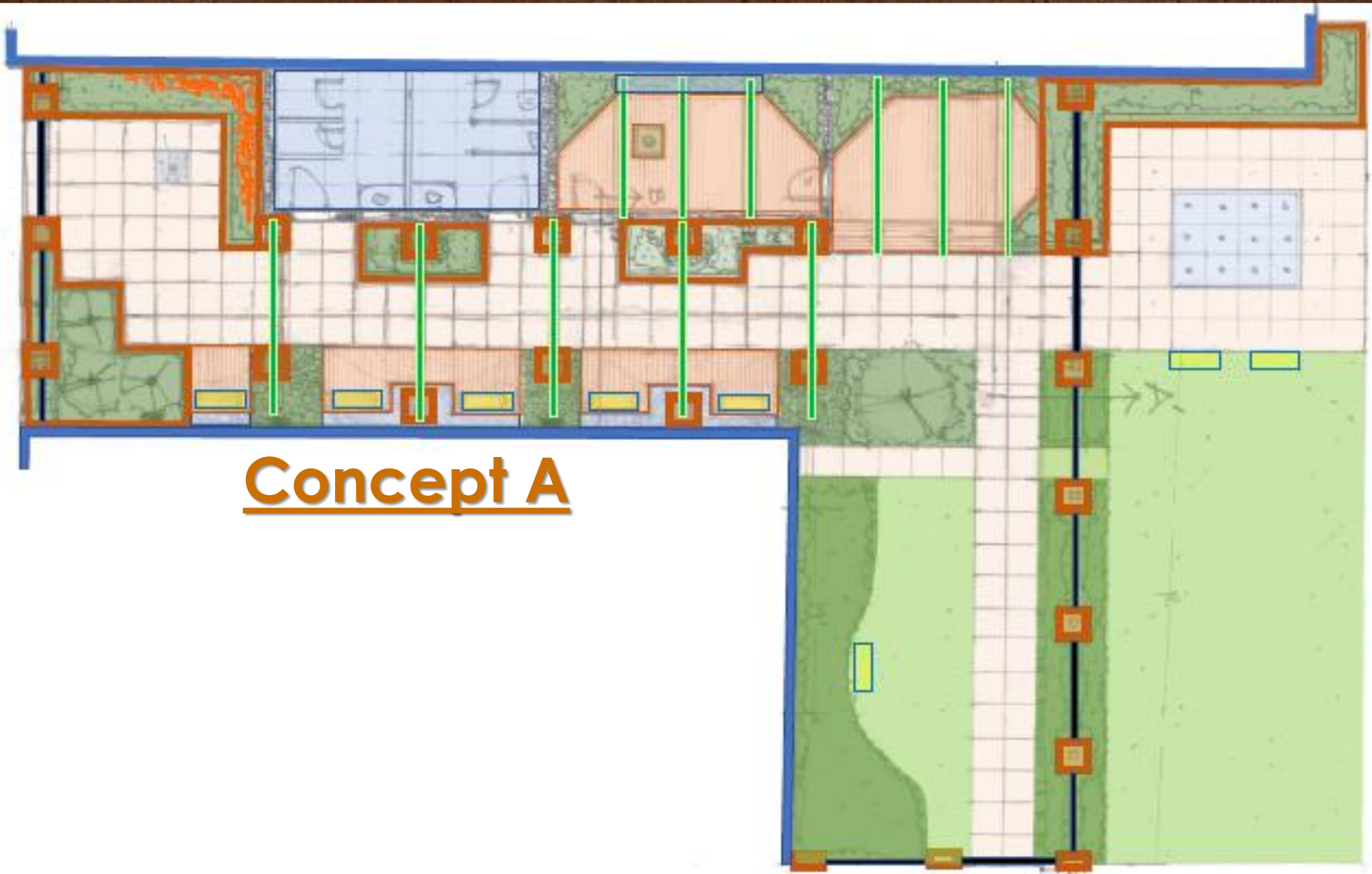
Design Workshop #1 – May 25, 2017

- Fill out a survey
- Share your ideas with your group
- Diagram design elements
- Draw & label your map
- Share your ideas with everyone
- Discuss common ideas & themes

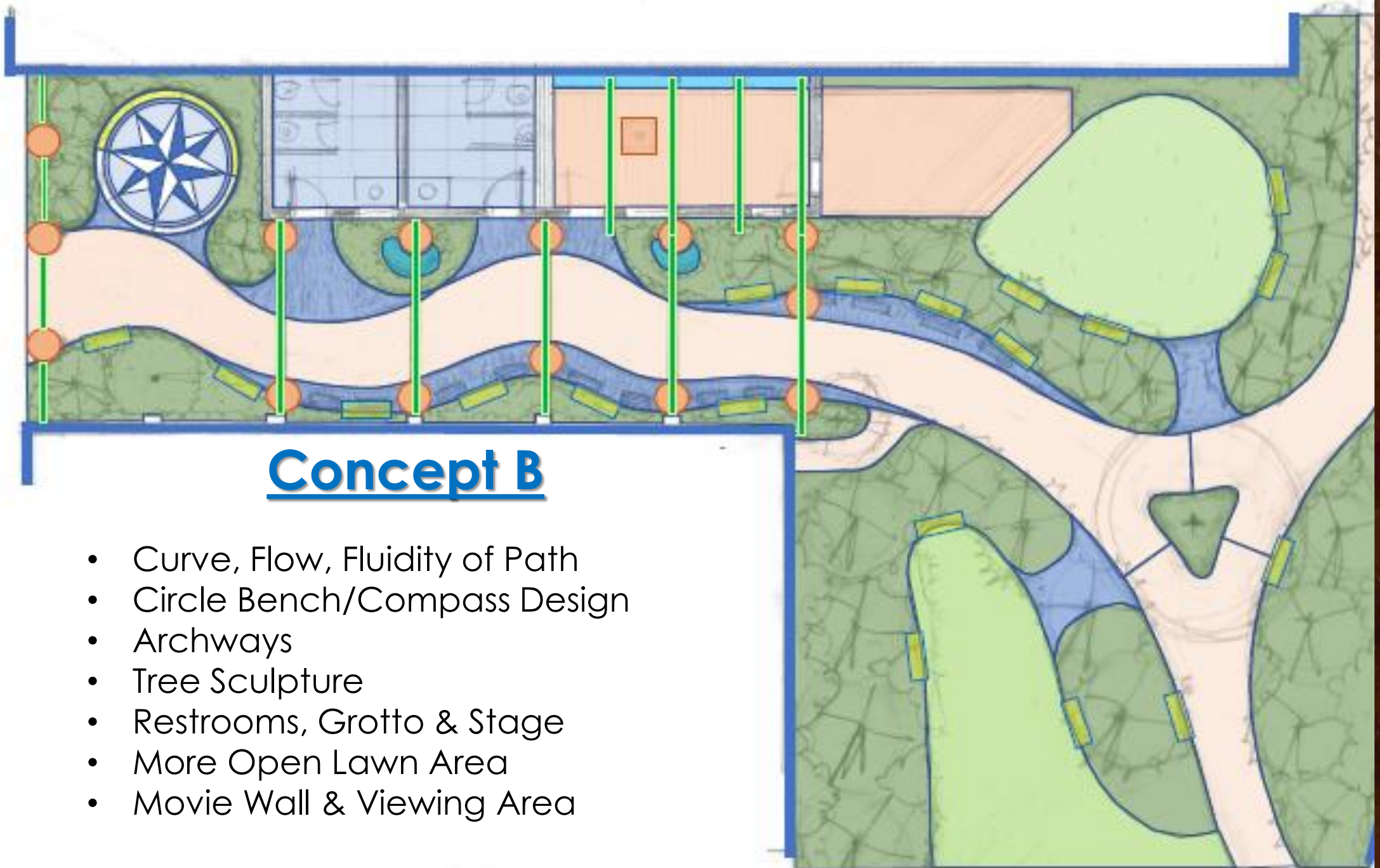


Key Design Workshop #1 Ideas

- Keep both brick buildings
- Public Restrooms
- Benches & Tables
- Water Features
- Overhead Arches & Arbors
- Lighting
- Local Public Art
- Movie Wall
- Public Chalk Board
- Open lawn Area
- Multiple pavement types
- Security Fence & Gate
- Lots of Shade
- Sustainability / Fund Raising

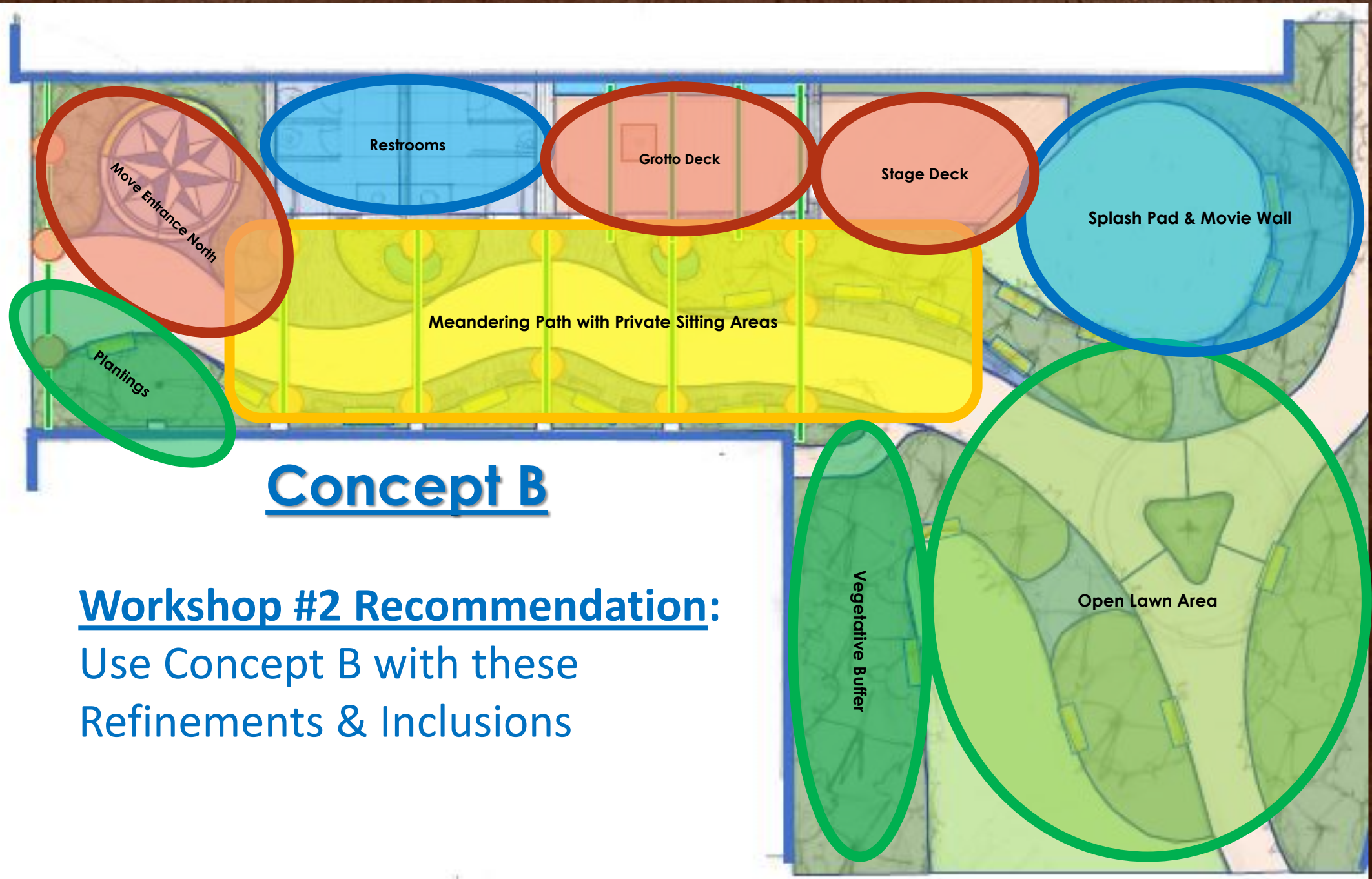


Concept A



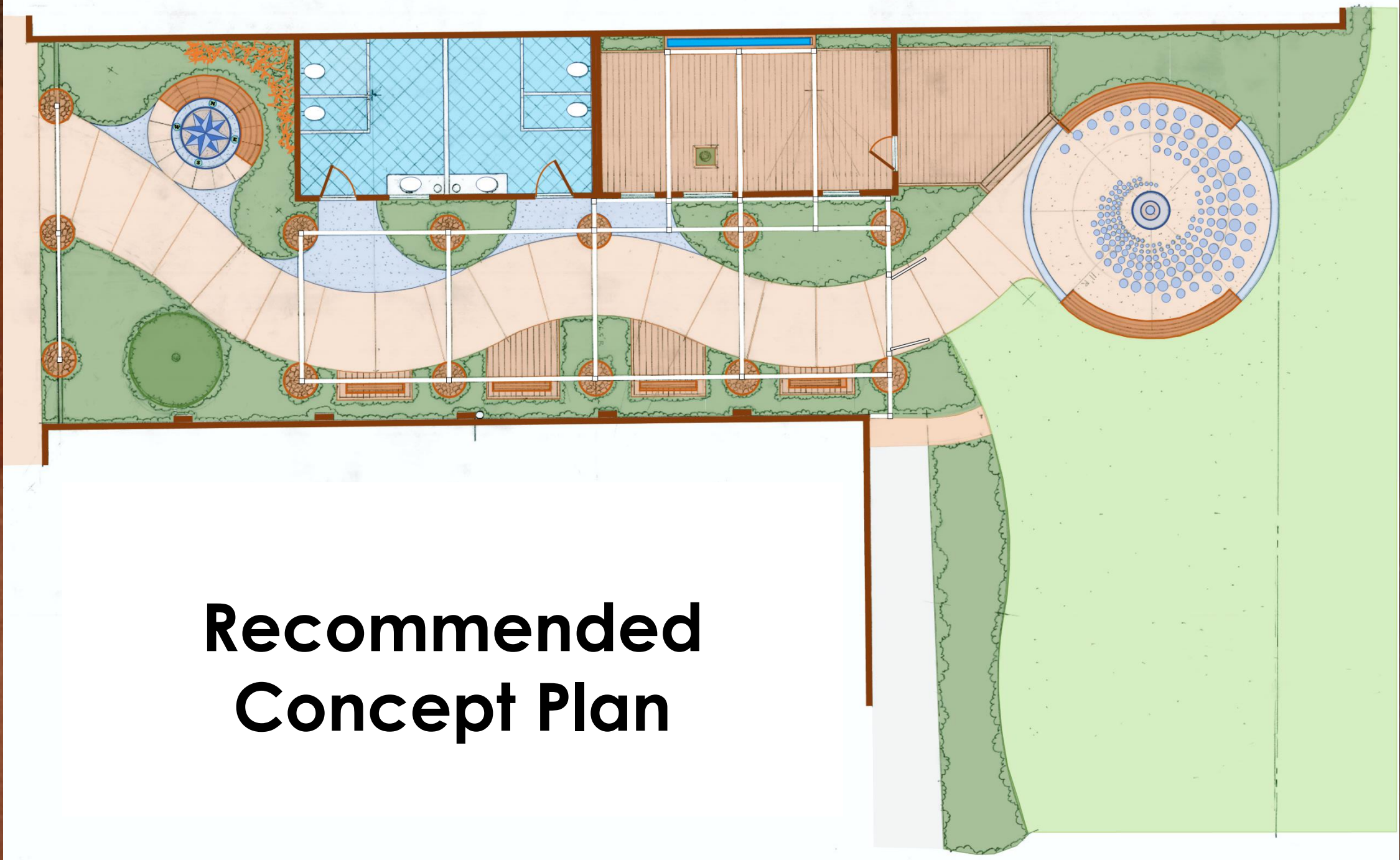
Concept B

- Curve, Flow, Fluidity of Path
- Circle Bench/Compass Design
- Archways
- Tree Sculpture
- Restrooms, Grotto & Stage
- More Open Lawn Area
- Movie Wall & Viewing Area

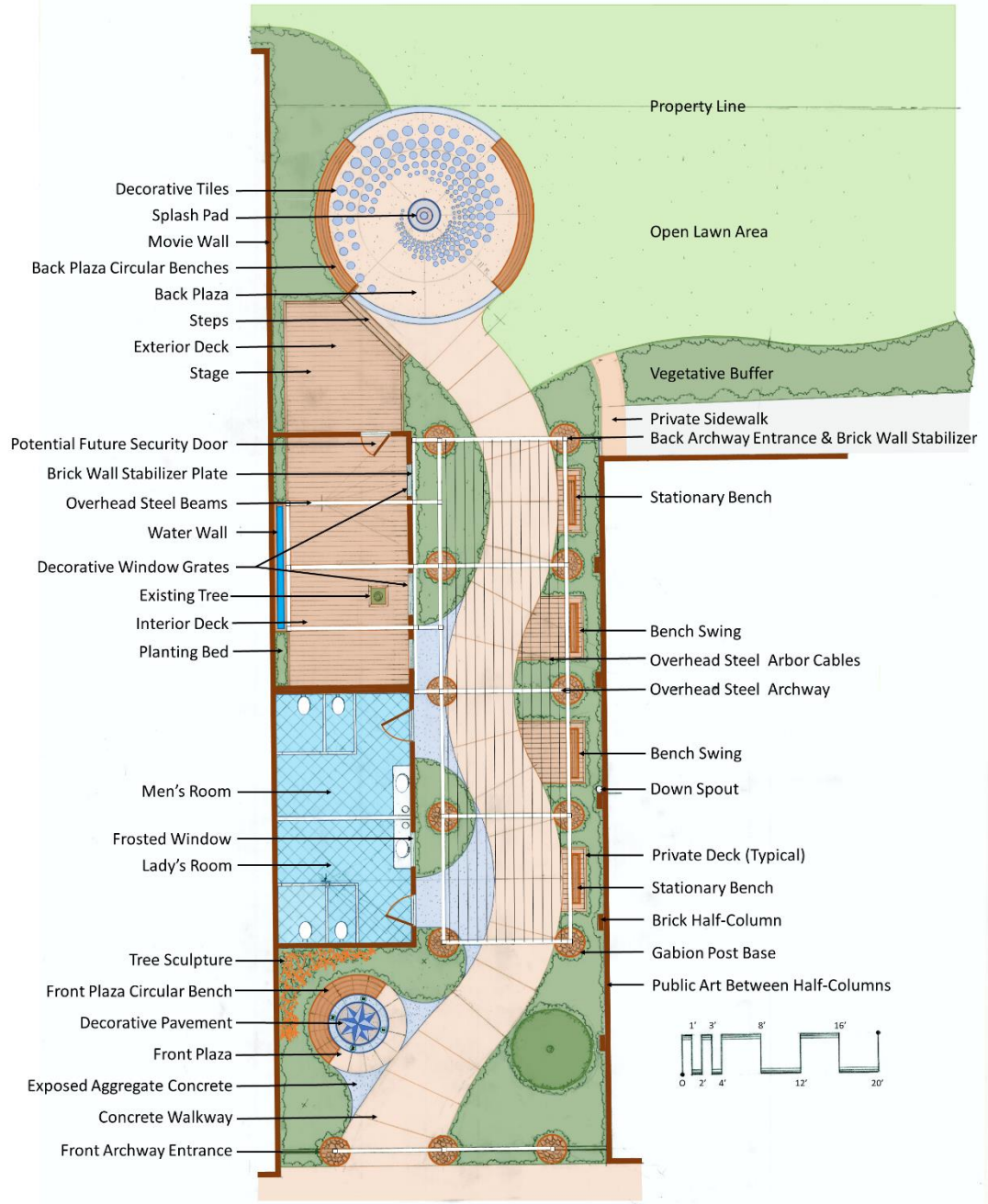


Concept B

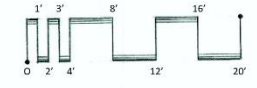
Workshop #2 Recommendation:
Use Concept B with these
Refinements & Inclusions



Recommended Concept Plan

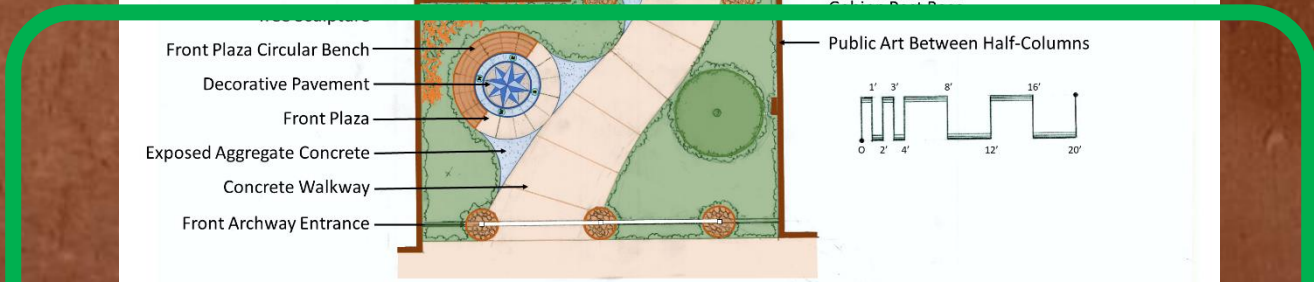
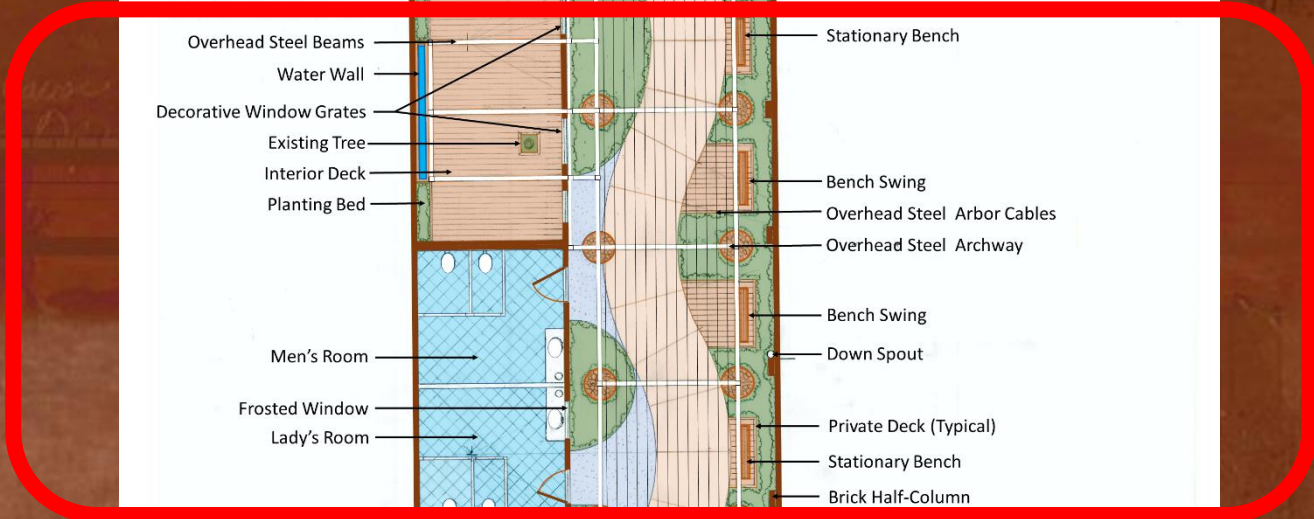
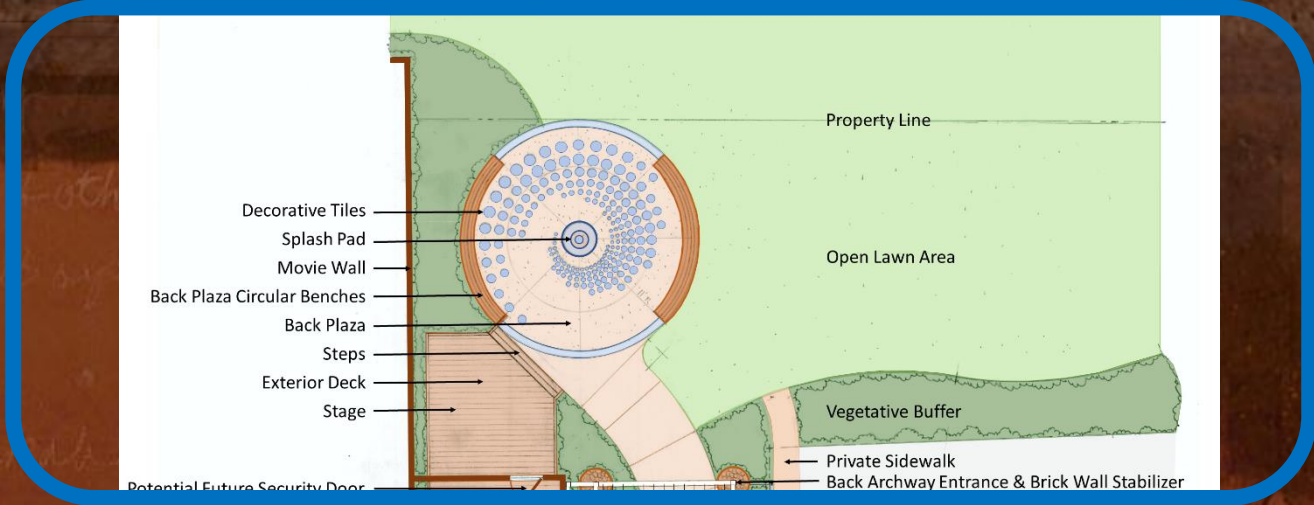


- Property Line
- Open Lawn Area
- Decorative Tiles
- Splash Pad
- Movie Wall
- Back Plaza Circular Benches
- Back Plaza
- Steps
- Exterior Deck
- Stage
- Vegetative Buffer
- Private Sidewalk
- Back Archway Entrance & Brick Wall Stabilizer
- Potential Future Security Door
- Brick Wall Stabilizer Plate
- Overhead Steel Beams
- Water Wall
- Decorative Window Grates
- Existing Tree
- Interior Deck
- Planting Bed
- Stationary Bench
- Bench Swing
- Overhead Steel Arbor Cables
- Overhead Steel Archway
- Bench Swing
- Down Spout
- Men's Room
- Frosted Window
- Lady's Room
- Private Deck (Typical)
- Stationary Bench
- Brick Half-Column
- Gabion Post Base
- Public Art Between Half-Columns
- Tree Sculpture
- Front Plaza Circular Bench
- Decorative Pavement
- Front Plaza
- Exposed Aggregate Concrete
- Concrete Walkway
- Front Archway Entrance

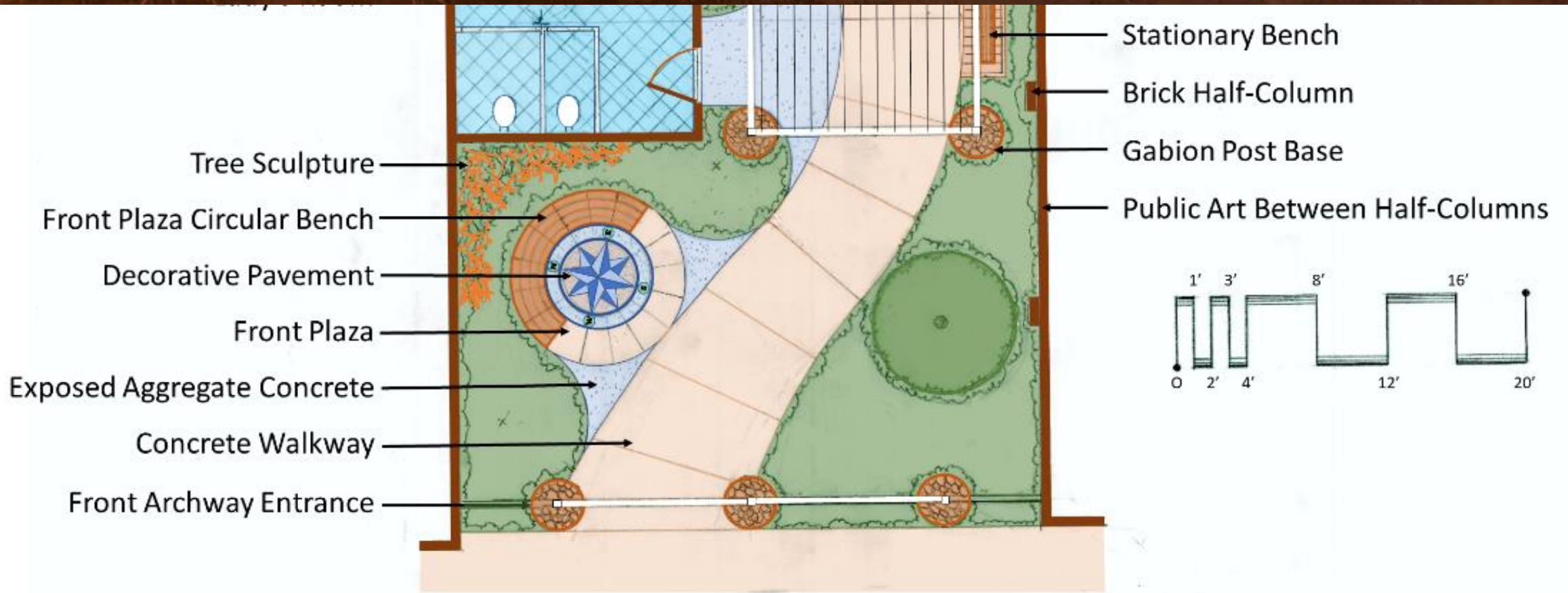


Stoneville Downtown Pocket Park Design

Foothills Planning + Design, PLLC and PTRC

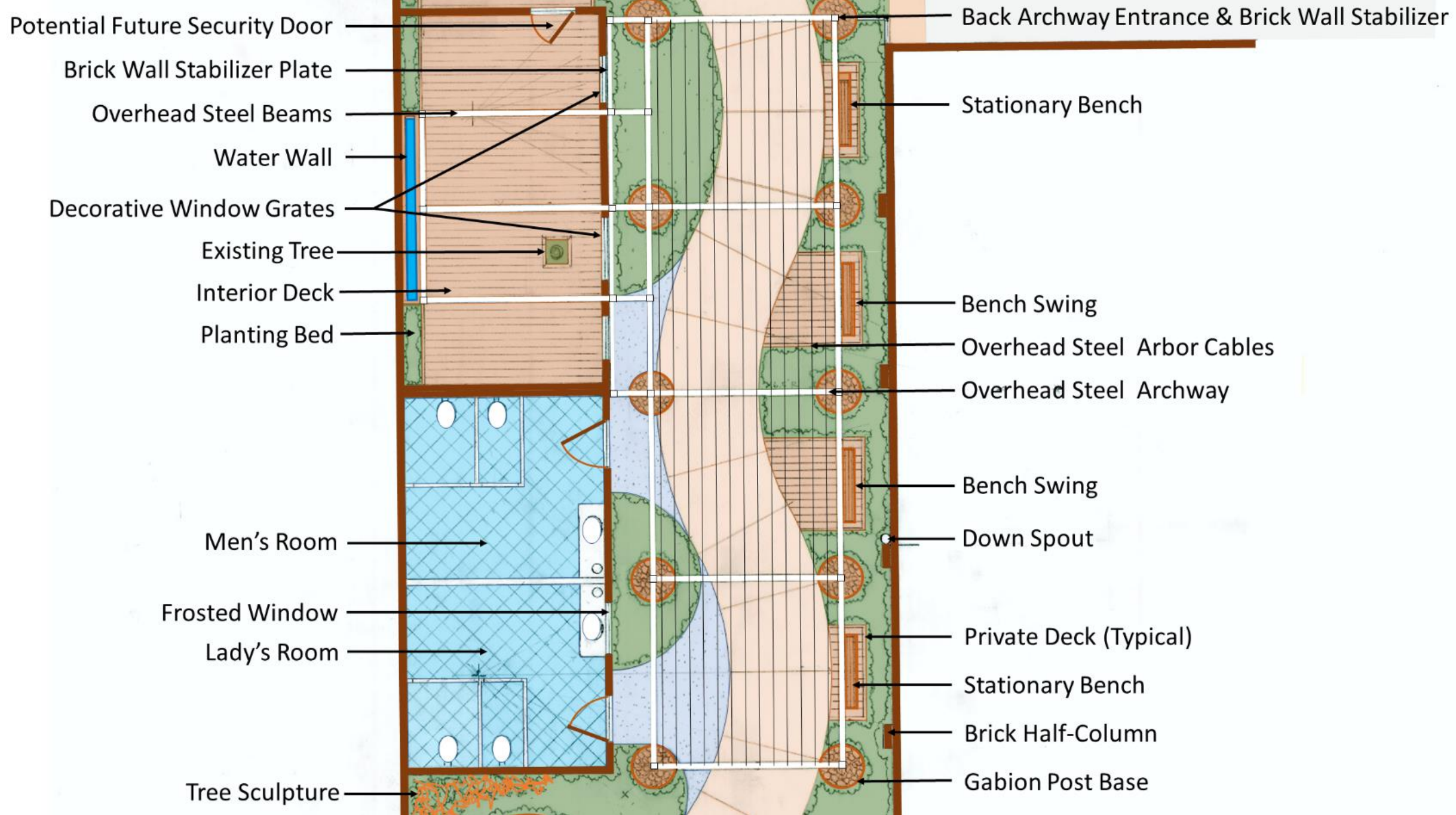


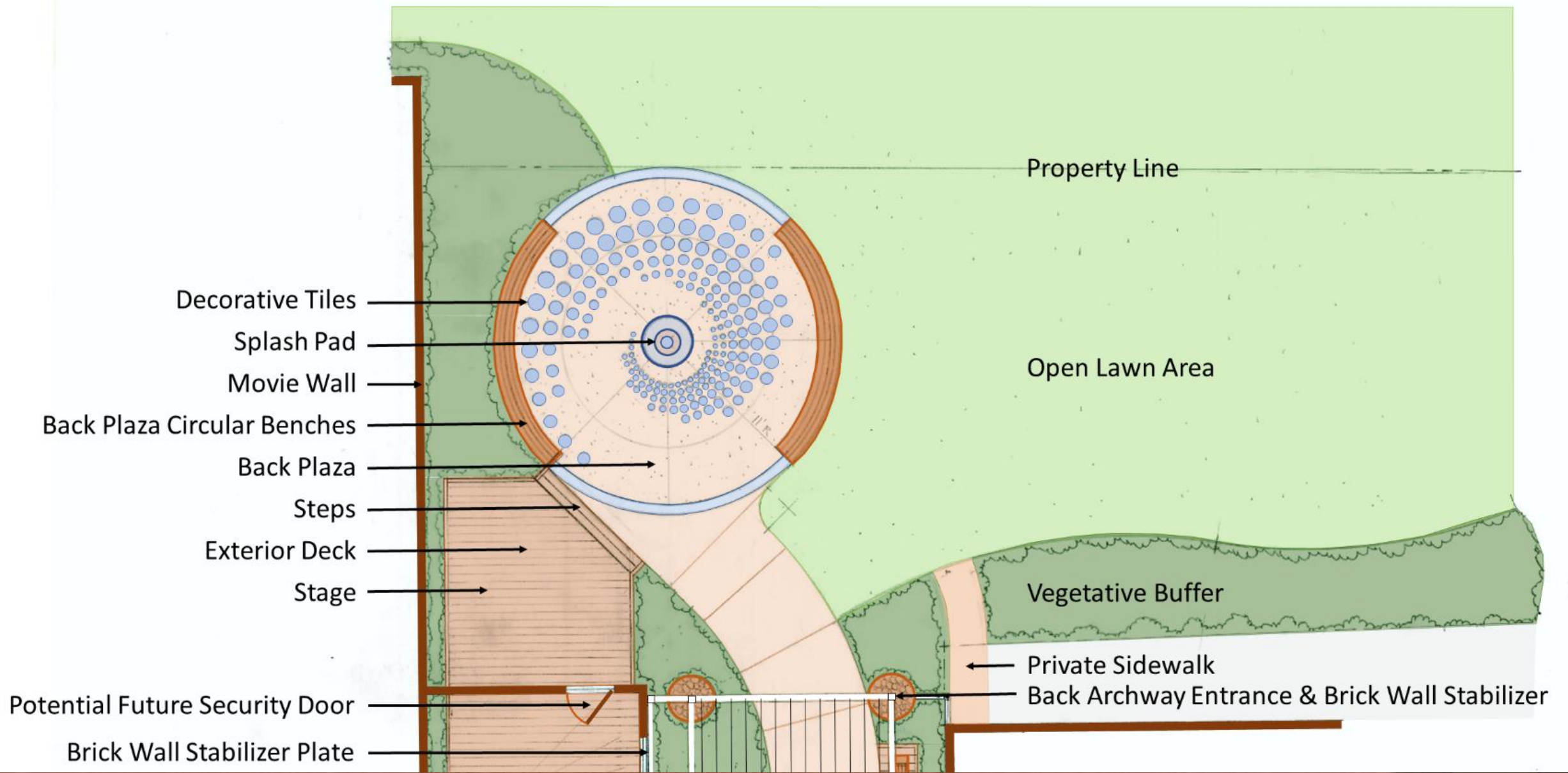
Stoneville Downtown Pocket Park Design

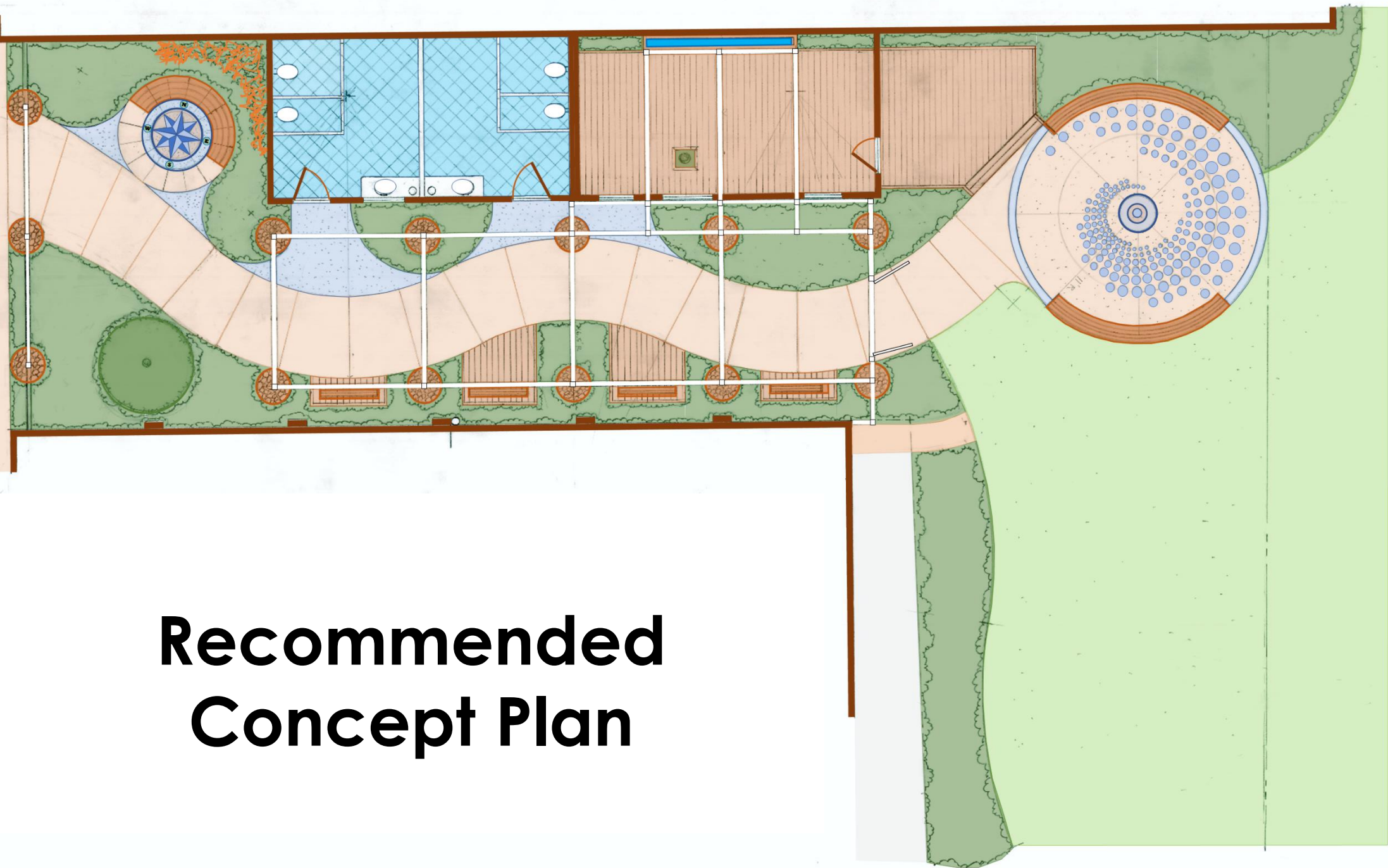


Stoneville Downtown Pocket Park Design

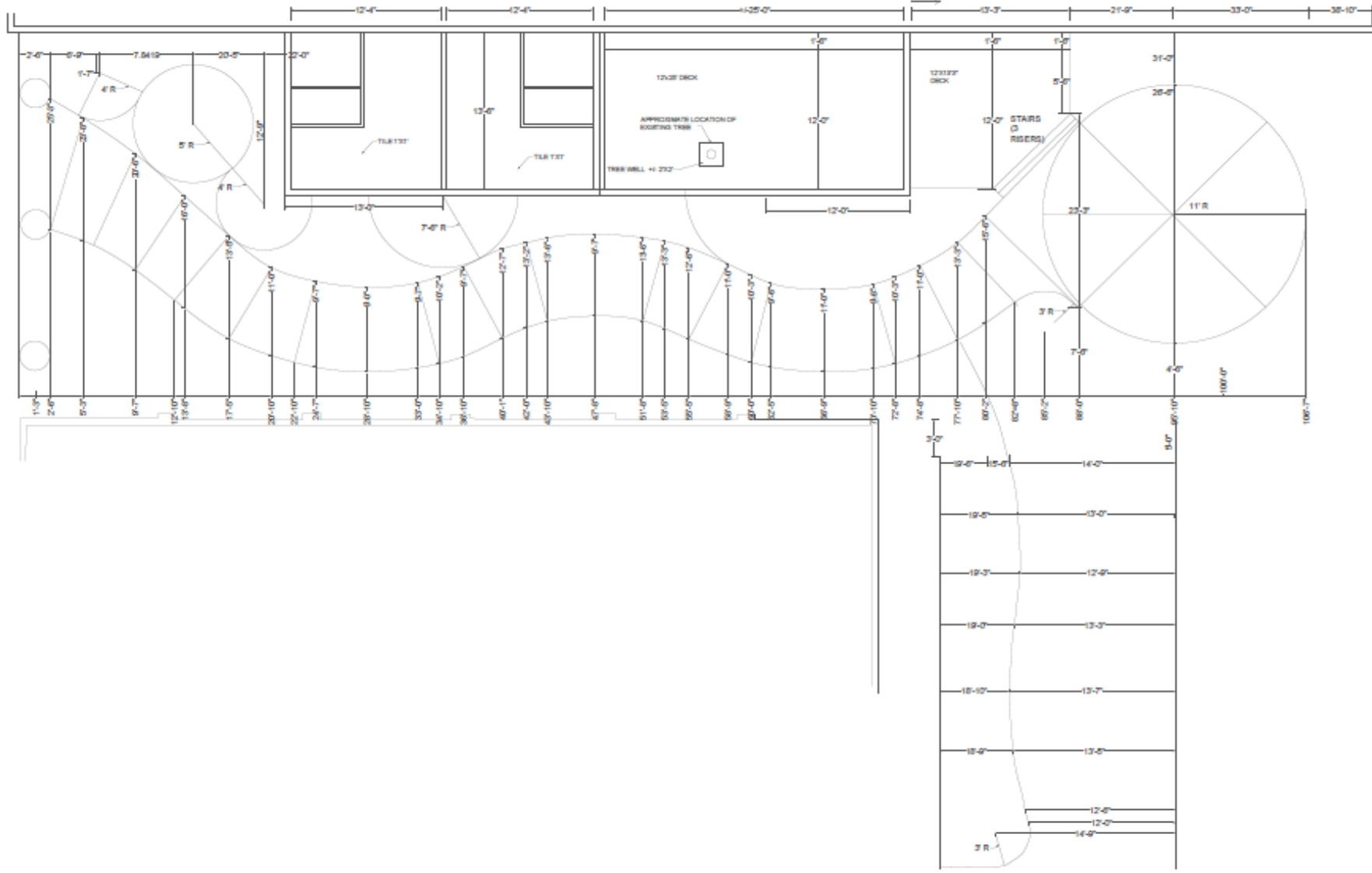
Foothills Planning + Design, PLLC and PTRC







Recommended Concept Plan



LAYOUT PLAN

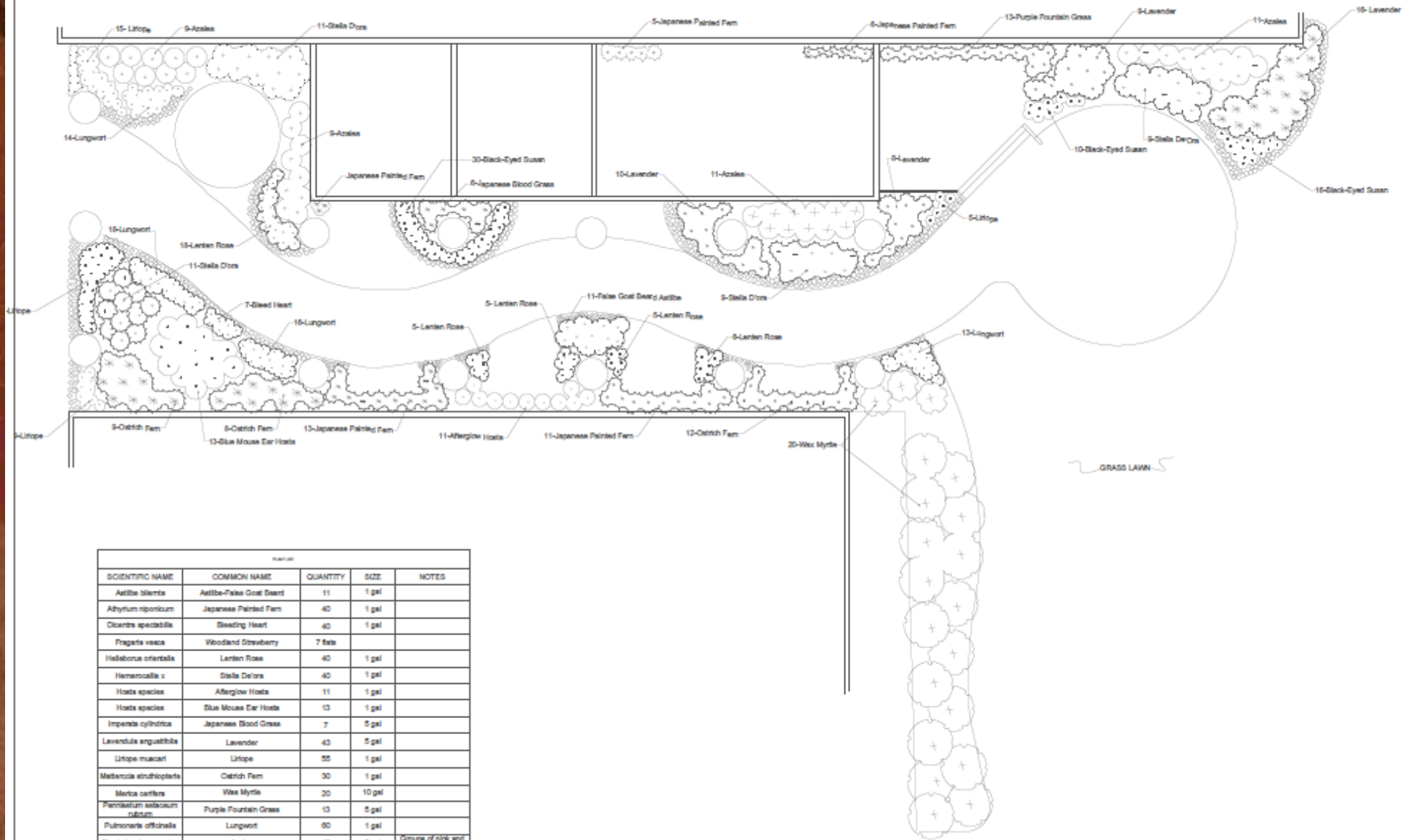
SHEET:
LAYOUT L1

DATE:
8/13/2017

DRAWN BY: JCW

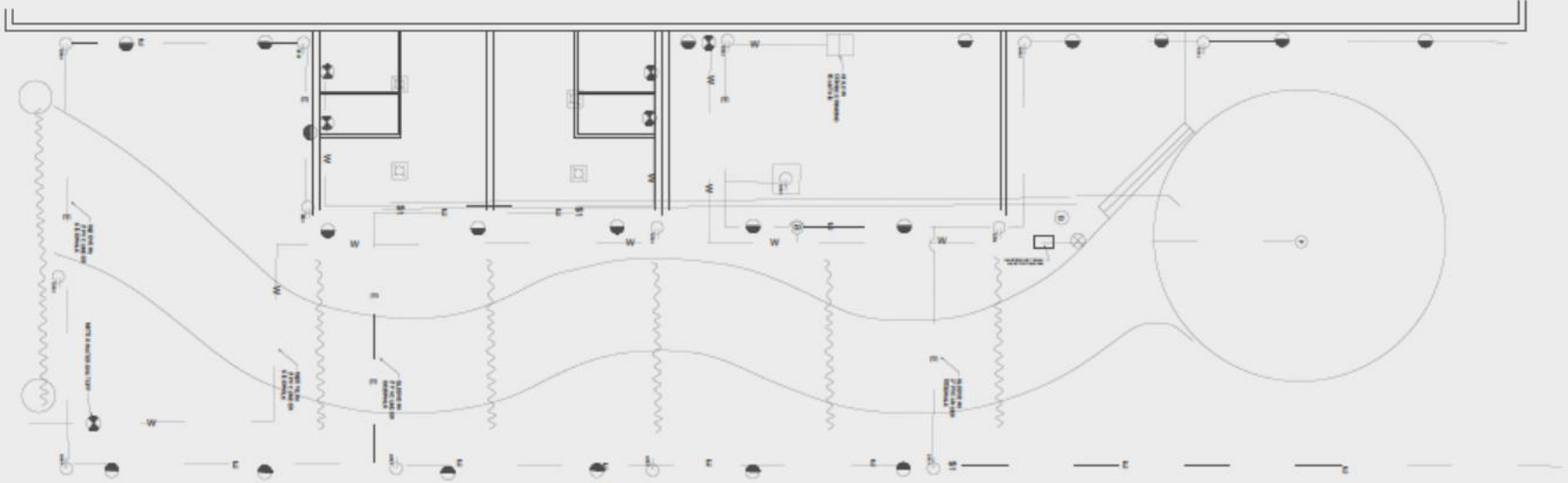
STONEVILLE POCKET PARK
STONEVILLE, NC
Town Manager: Ken Gamble

FOOTHILLS PLANNING & DESIGN, PLLC
519 SOUTH HAWTHORNE ROAD
WINSTON SALEM, NC



SCIENTIFIC NAME	COMMON NAME	QUANTITY	SIZE	NOTES
<i>Azalea filicula</i>	Azalea-Falae Goat Beard	11	1 gal	
<i>Athyrium niponicum</i>	Japanese Painted Fern	40	1 gal	
<i>Dicentra spectabilis</i>	Bleeding Heart	40	1 gal	
<i>Fragaria vesca</i>	Woodland Strawberry	7 beds		
<i>Hebeboea orientalis</i>	Lenten Rose	40	1 gal	
<i>Hemerocallis s.</i>	Stella De'Ora	40	1 gal	
<i>Hosta species</i>	Afferglow Hosta	11	1 gal	
<i>Hosta species</i>	Blue Mouse Ear Hosta	13	1 gal	
<i>Impatiens cylindrica</i>	Japanese Blood Grass	7	5 gal	
<i>Lavandula angustifolia</i>	Lavender	43	5 gal	
<i>Liriope muscari</i>	Liriope	55	1 gal	
<i>Mertensia struthioflora</i>	Oleth Fern	30	1 gal	
<i>Mertensia cataractae</i>	Wax Myrtle	20	10 gal	
<i>Pennisetum setaceum rubicm.</i>	Purple Fountain Grass	13	5 gal	
<i>Pulmonaria officinalis</i>	Lungwort	80	1 gal	
<i>Rhododendron species</i>	Azalea	40	5 gal	Group of pink and purple
<i>Ruthicola hirta</i>	Black-Eyed Susan	80	1 gal	

PLANTING PLAN



-  GFCI 20A RECEPTACLE
-  LED SPOT LIGHT
-  RECESSED CAN LIGHT 6"
-  WATER HOSE BIB
-  20A ELECTRICAL SWITCH
-  WATER VALVE SHUTOFF
-  LED ROPE LIGHT
-  ELECTRICAL LINE
-  WATER LINE

UTILITIES PLAN

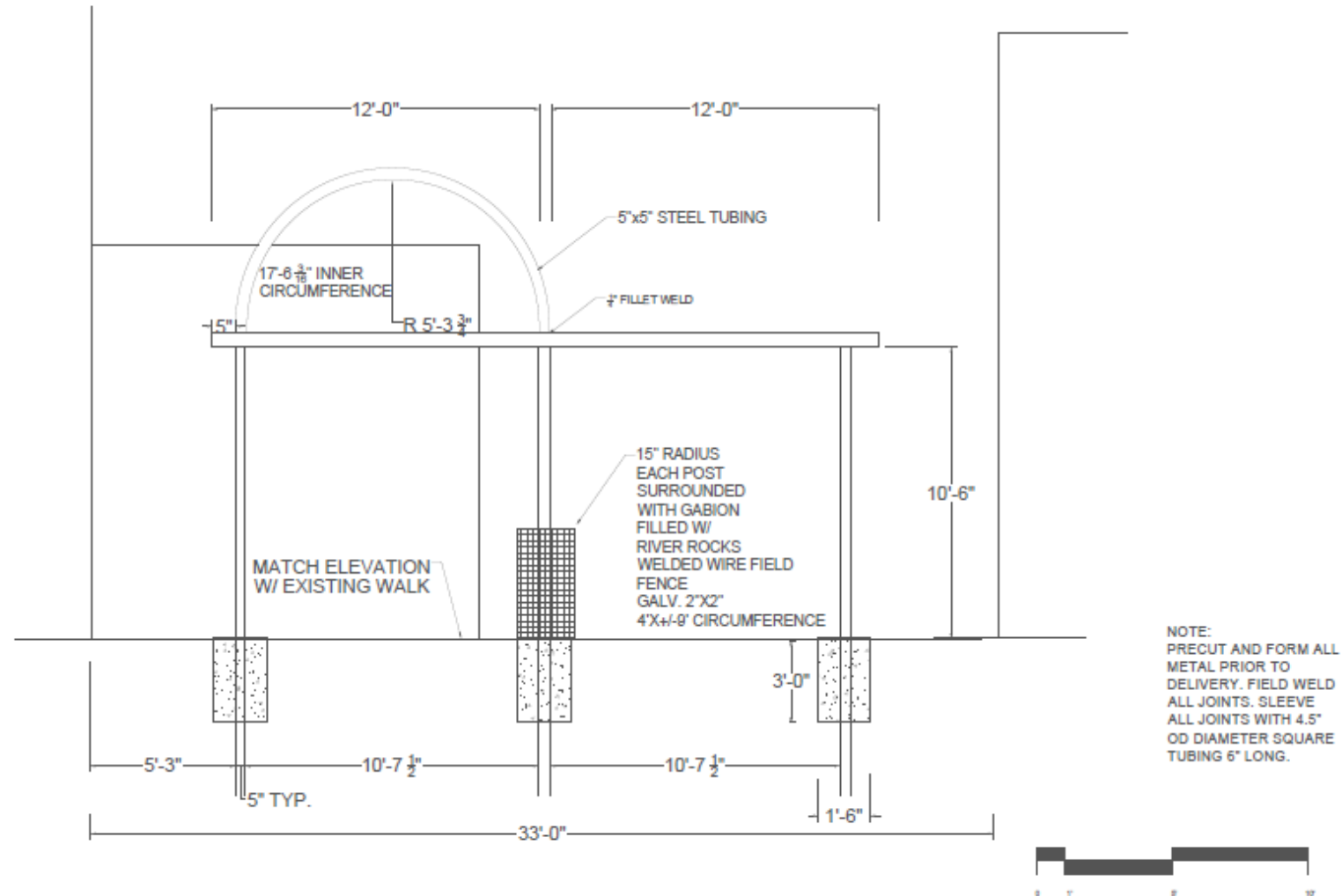
SHEET:
RESTROOM
FIXTURES
DRAWN BY: JCW

DATE:
8/13/2017

STONEVILLE POCKET PARK
STONEVILLE, NC
Town Manager: Ken Gamble

FOOTHILLS PLANNING & DESIGN, PLLC
519 SOUTH HAWTHORNE ROAD
WINSTON SALEM, NC

ENTRANCE ARCHWAY DETAIL



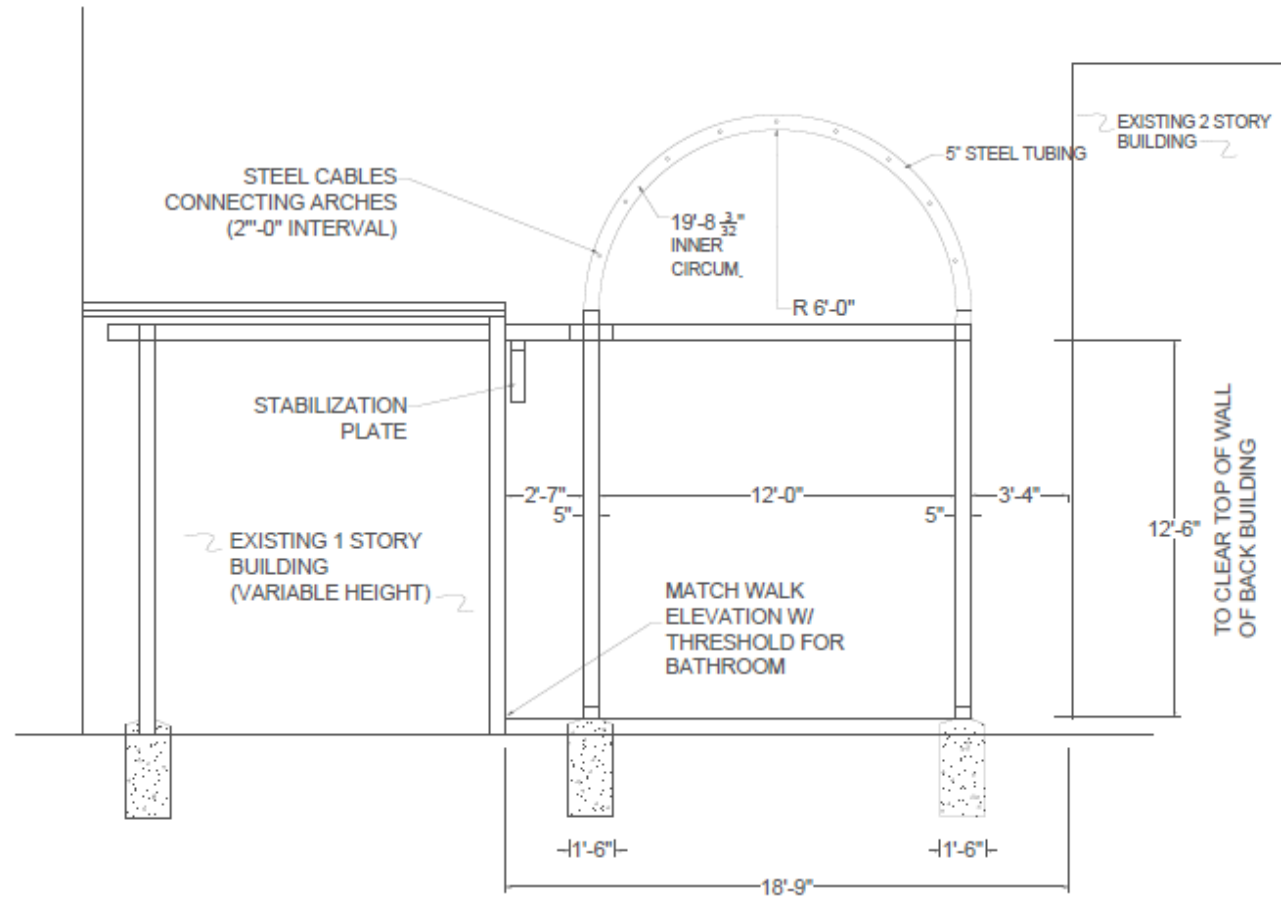
FOOTHILLS PLANNING & DESIGN, PLLC
 519 SOUTH HAWTHORNE ROAD
 WINSTON SALEM, NC

STONEVILLE POCKET PARK
 STONEVILLE, NC
 Town Manager: Ken Gamble

SHEET:
 FRONT
 ENTRANCE
 DRAWN BY: JCW

DATE:
 8/13/2017



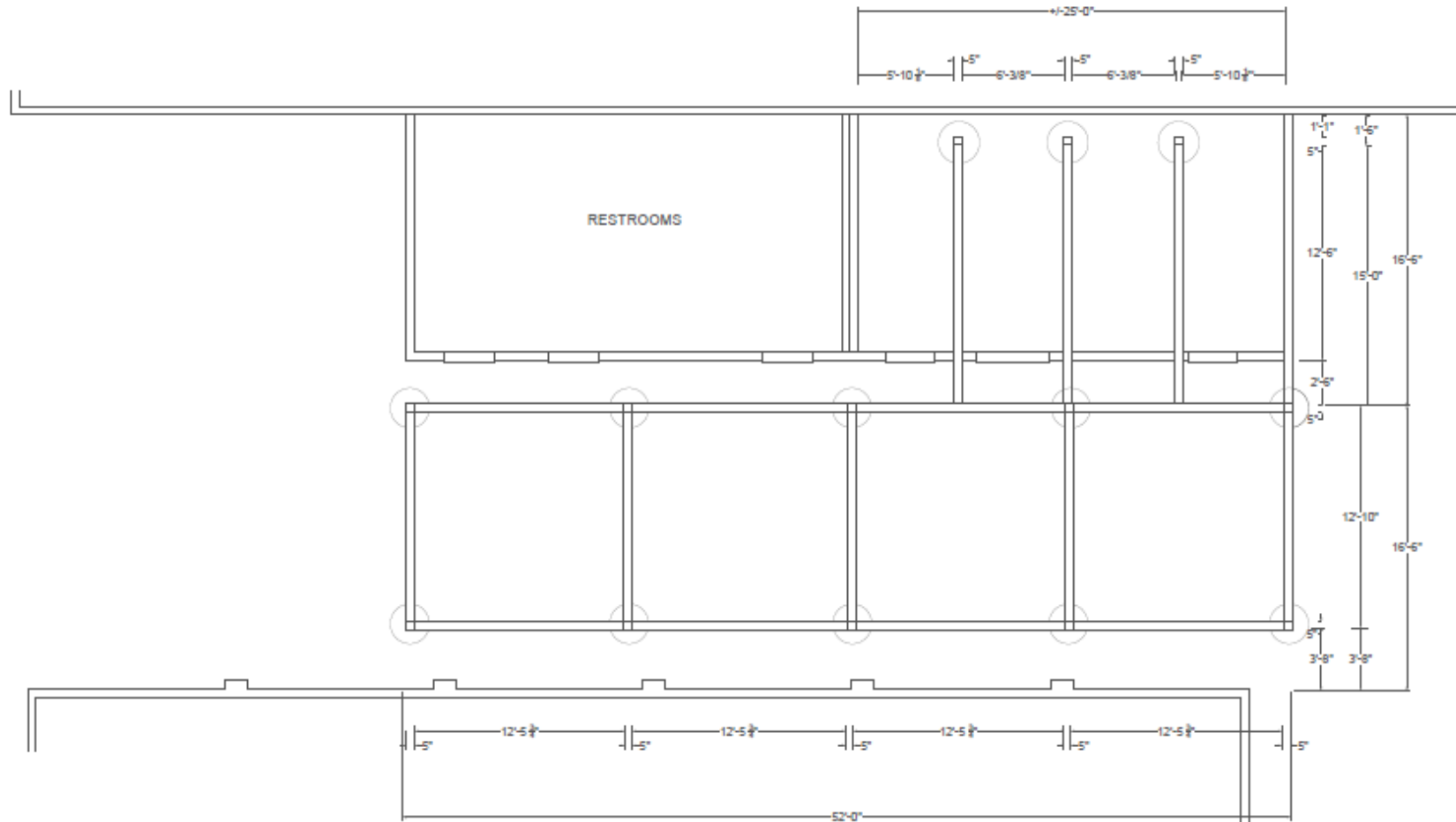


OVERHEAD ARCHWAY

FOOTHILLS PLANNING & DESIGN, PLLC
 519 SOUTH HAWTHORNE ROAD
 WINSTON SALEM, NC

STONEVILLE POCKET PARK
 STONEVILLE, NC
 Town Manager: Ken Gamble

SHEET: ARCHWAY ELEVATION
 DATE: 8/13/2017
 DRAWN BY: JCW



OVERHEAD ARCHWAY

SHEET:
ARCHWAY
LAYOUT PLAN

DATE:
8/13/2017

DRAWN BY: JCW

STONEVILLE POCKET PARK
STONEVILLE, NC
Town Manager: Ken Gamble

FOOTHILLS PLANNING & DESIGN, PLLC
519 SOUTH HAWTHORNE ROAD
WINSTON SALEM, NC

Phase 1 Goals

- Open up, use & appreciate entire site ASAP;
- Show how the park will look, feel & function;
- Facilitate organic park development over time;
- Encourage & inspire generosity & support.

Phase 1 – Top-Priority Elements:

- Remove existing fence, pavers, poles & debris;
- Trim existing tree(s)
- Stabilize back brick building;
- Paint brick building doors & windows;
- Stake out major design features;
- Install foundations for overhead structures;
- Install water, sewer & electric (**Town**);
- Add top soil & rough grade;
- Install walkway & back plaza in rock dust;
- Install front plaza in concrete;
- Install planting beds, borders, mulch (& some plants?);
- Install fund-raising sign (**Town**);
- Commission & install fund-raising Tree Sculpture (**Town**).

Phasing Plan and Cost Estimates

- Phase 1 Budget: \$ 23,000
- Phase 2 Cost Estimate: \$ 30,000
- Phase 3 Cost Estimate: \$ 25,000
- Phase 4 Cost Estimate \$ 25,000
- Phase 5 Cost Estimate \$ 20,000
- Phase 6 Cost Estimate: \$ 27,000

- **TOTAL COST ESTIMATE: \$150,000**



Downtown Stoneville Pocket Park Plan

Downtown Stoneville Pocket Park

Thank you!

Paul Kron – Foothills Planning + Design, PLLC
336-287-7365 paul@foothillsdesign.us