



Davie County Comprehensive Land Development Plan

Focus Group Meeting

8.12.18 • Brock Recreation Center

Cameron Colvin, Regional Planner

Anna Leonard, Environmental Programs Coordinator



**PIEDMONT TRIAD
REGIONAL COUNCIL**



What a Comprehensive Plan?

A Community's Vision for the Future

State-required planning document

Guides infrastructure, development, County policies, and public services over the next 10-20 years.

Purpose



Why a Comp Plan is Needed

- 1 Development Patterns
- 2 Workforce Housing Needs
- 3 Transportation Issues
- 4 Aging Population

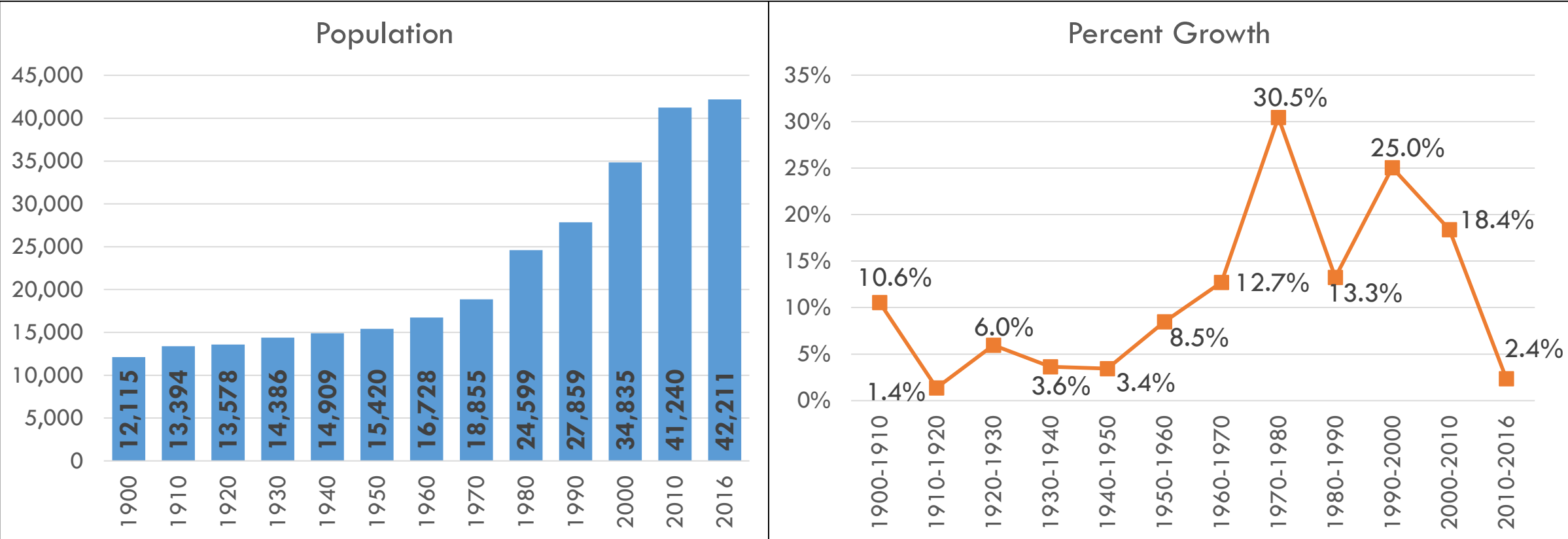


Current Trends, Population and Demographics Overview



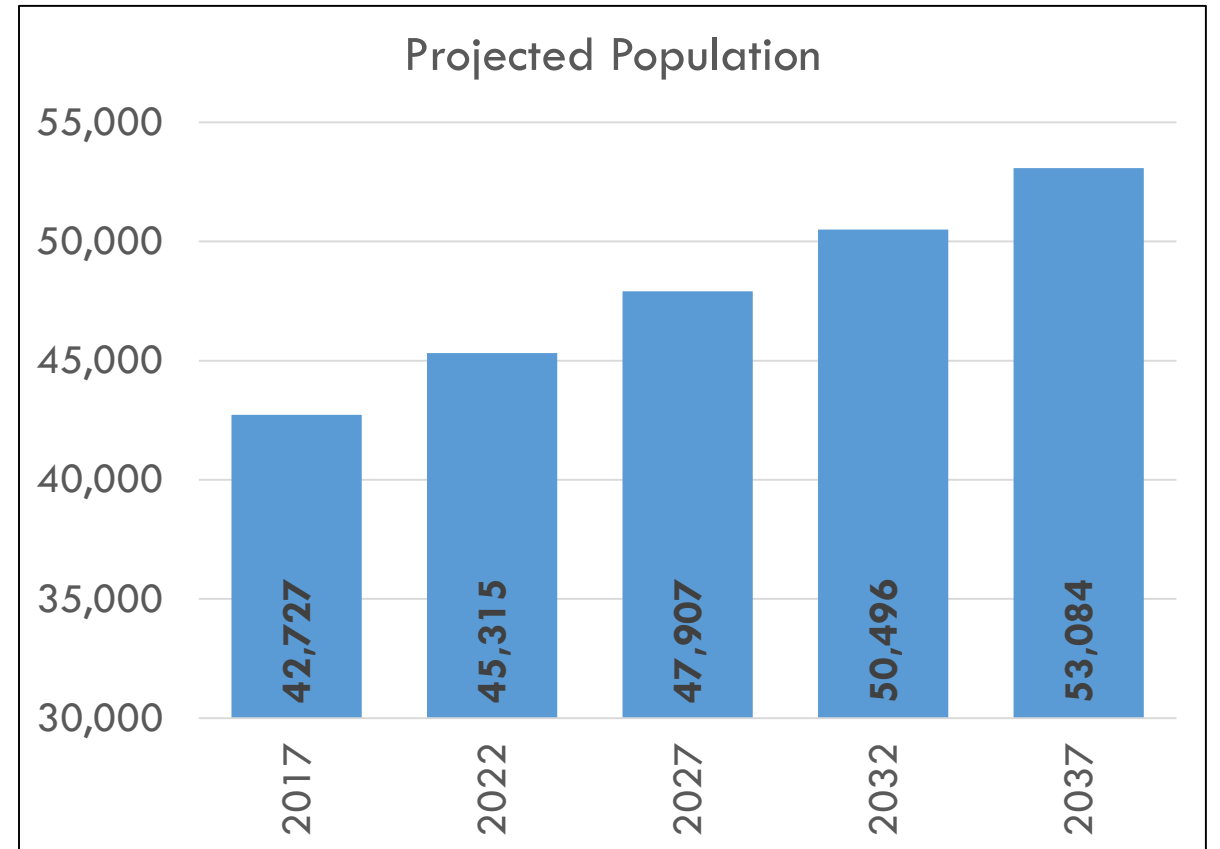
Davie County Population

- Since 1970, Davie County's population has more than doubled and started growing at a faster rate than Forsyth County and the State



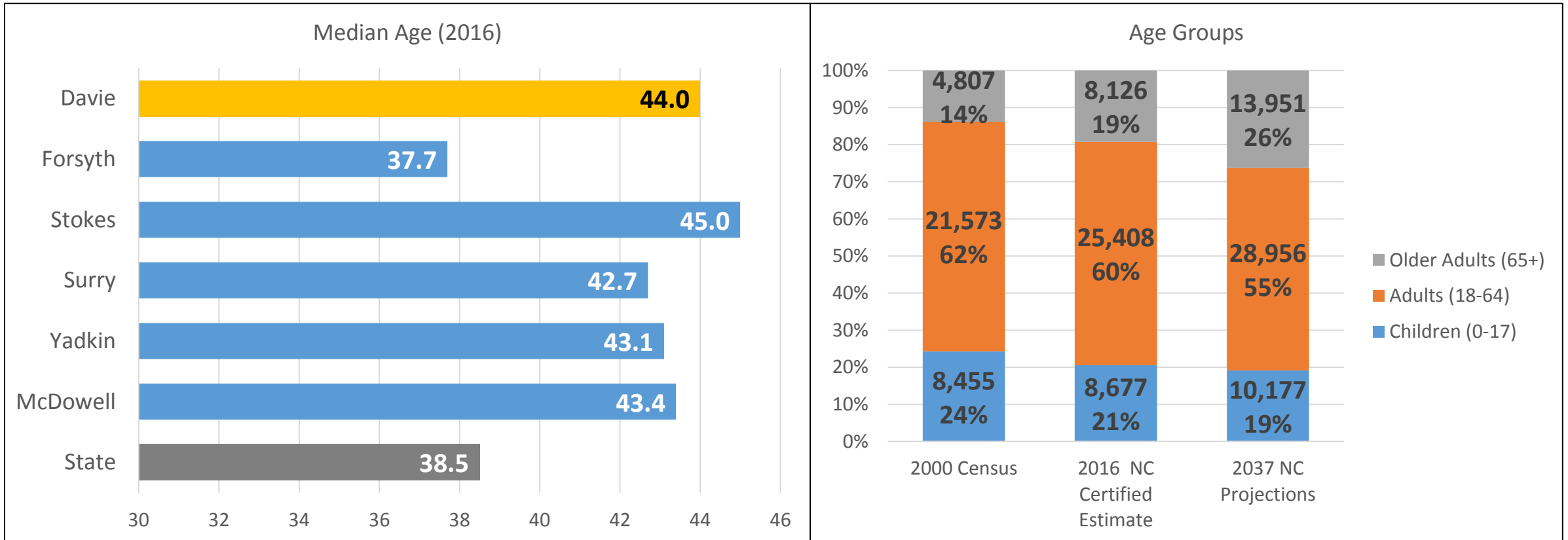
Projected Population

- Over the next 20 years, Davie County's population will grow 24% to over 53,000 residents.
- Higher than Forsyth County's growth rate (21%) and the State (22%).

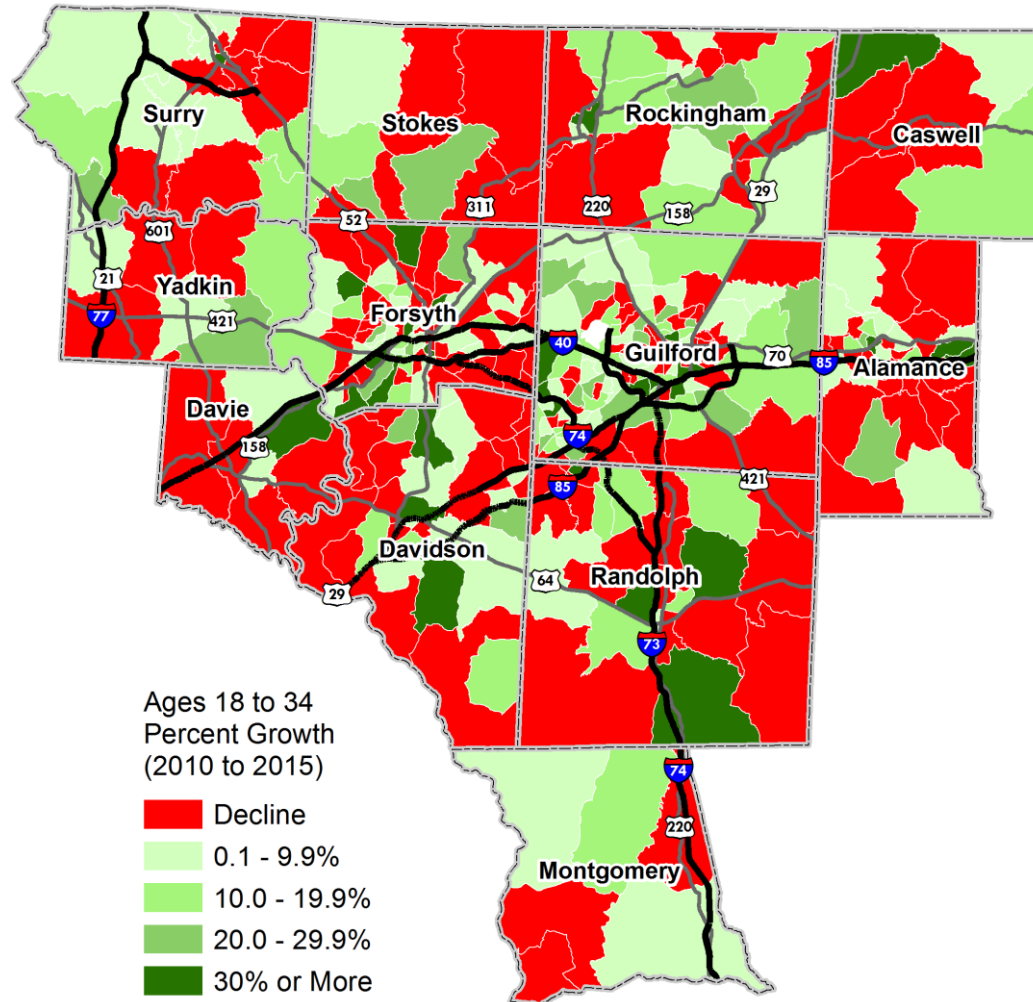


Age of the Population

- County population is aging
- Older adult age group is the fastest growing



Region's Population Growth By Census Tract

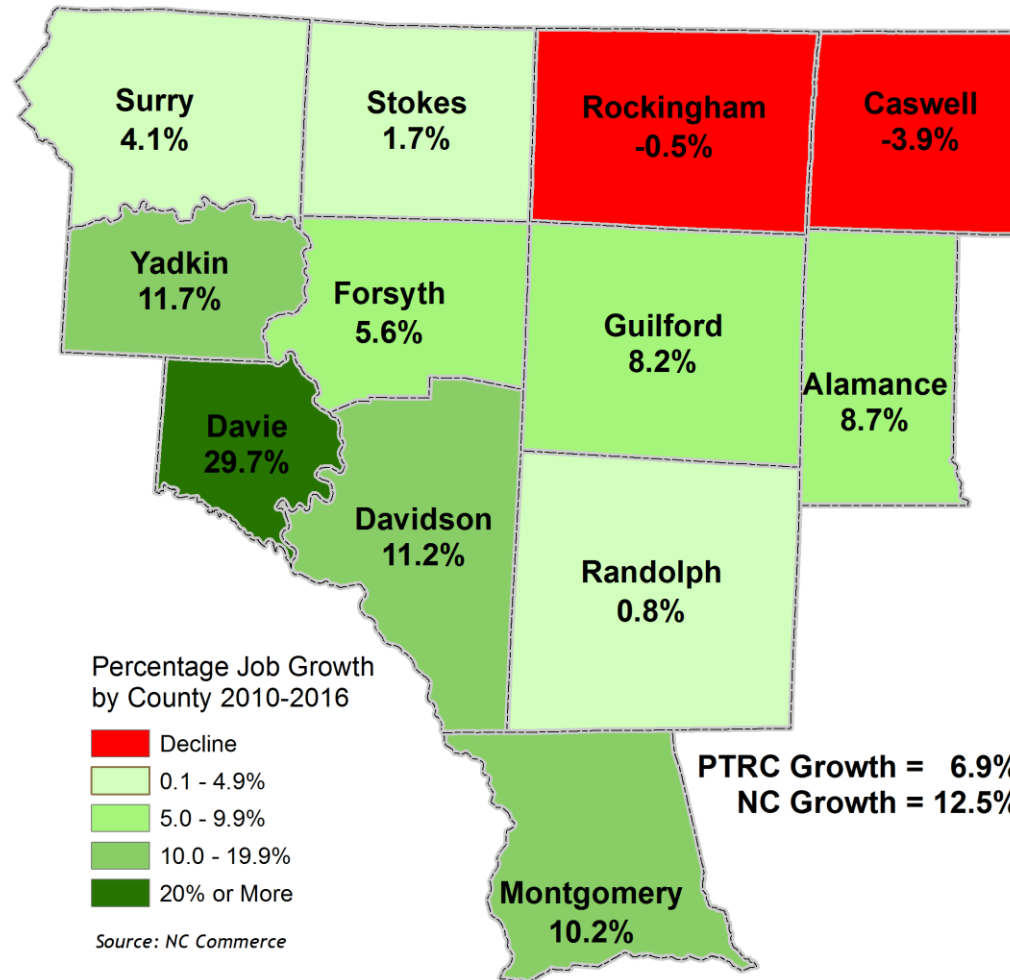


**Population
Growth
Ages 18-34
2010-2015**

Ages 18 to 34
Percent Growth
(2010 to 2015)

- Decline
- 0.1 - 9.9%
- 10.0 - 19.9%
- 20.0 - 29.9%
- 30% or More

Region's Job Growth By County



**JOB GROWTH
BY COUNTY
2010 – 2016**

PTRC Growth = 6.9%
NC Growth = 12.5%

Transportation Issues

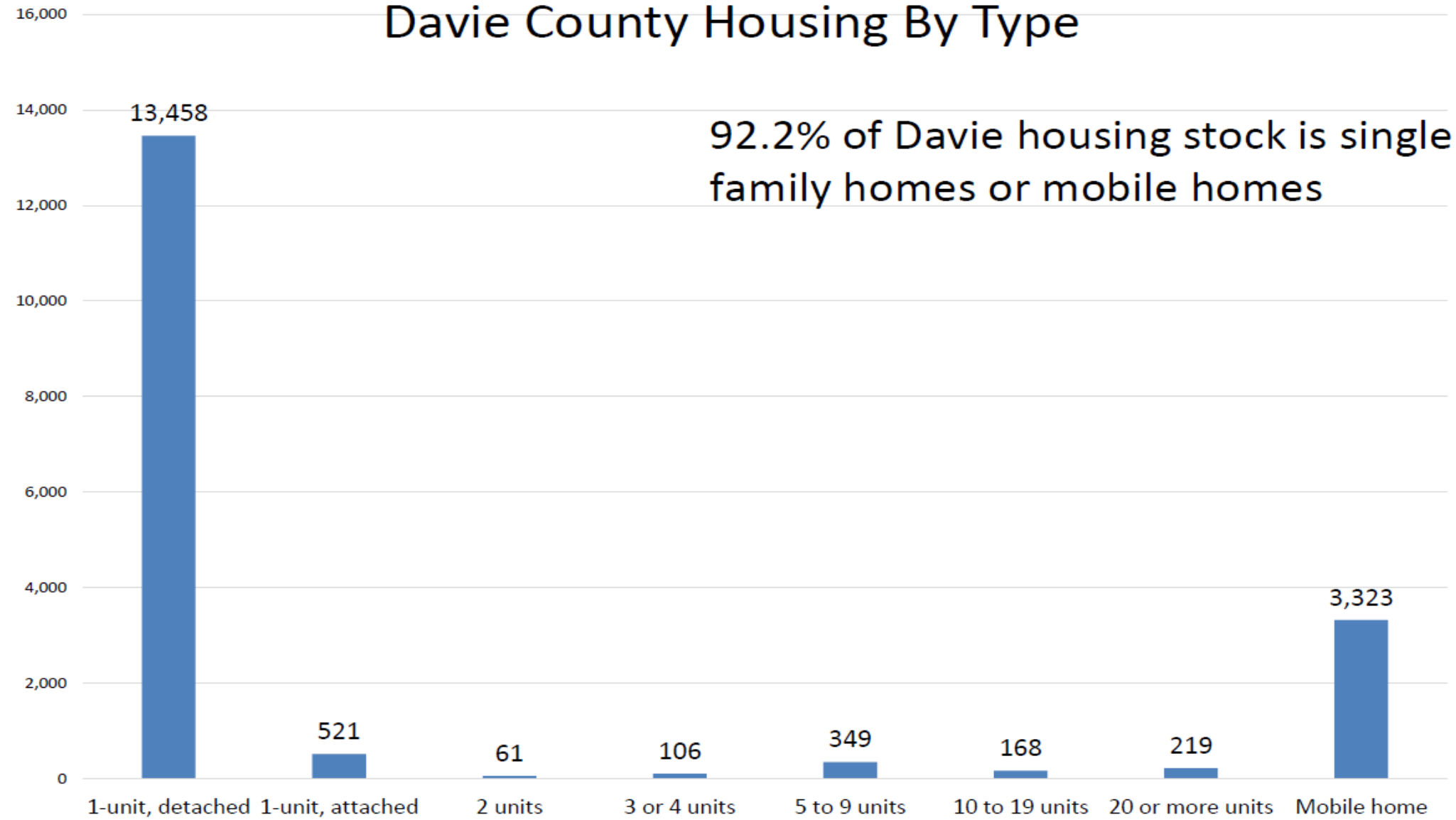


Commuting Patterns

- Of the County's resident workforce population (17,694):
 - 25% live and work in Davie County (4,479 people)
 - 30% commute to Forsyth County (net loss of 3,450 jobs)
 - 7% commute to Guilford County (net loss of 959 jobs)
- Of the County's employment population (11,698):
 - 38% live and work in Davie County (4,479 people)
 - 15% commute from Forsyth County (1,755)
 - 6% commute from Davidson County (180)

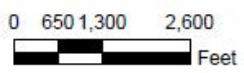
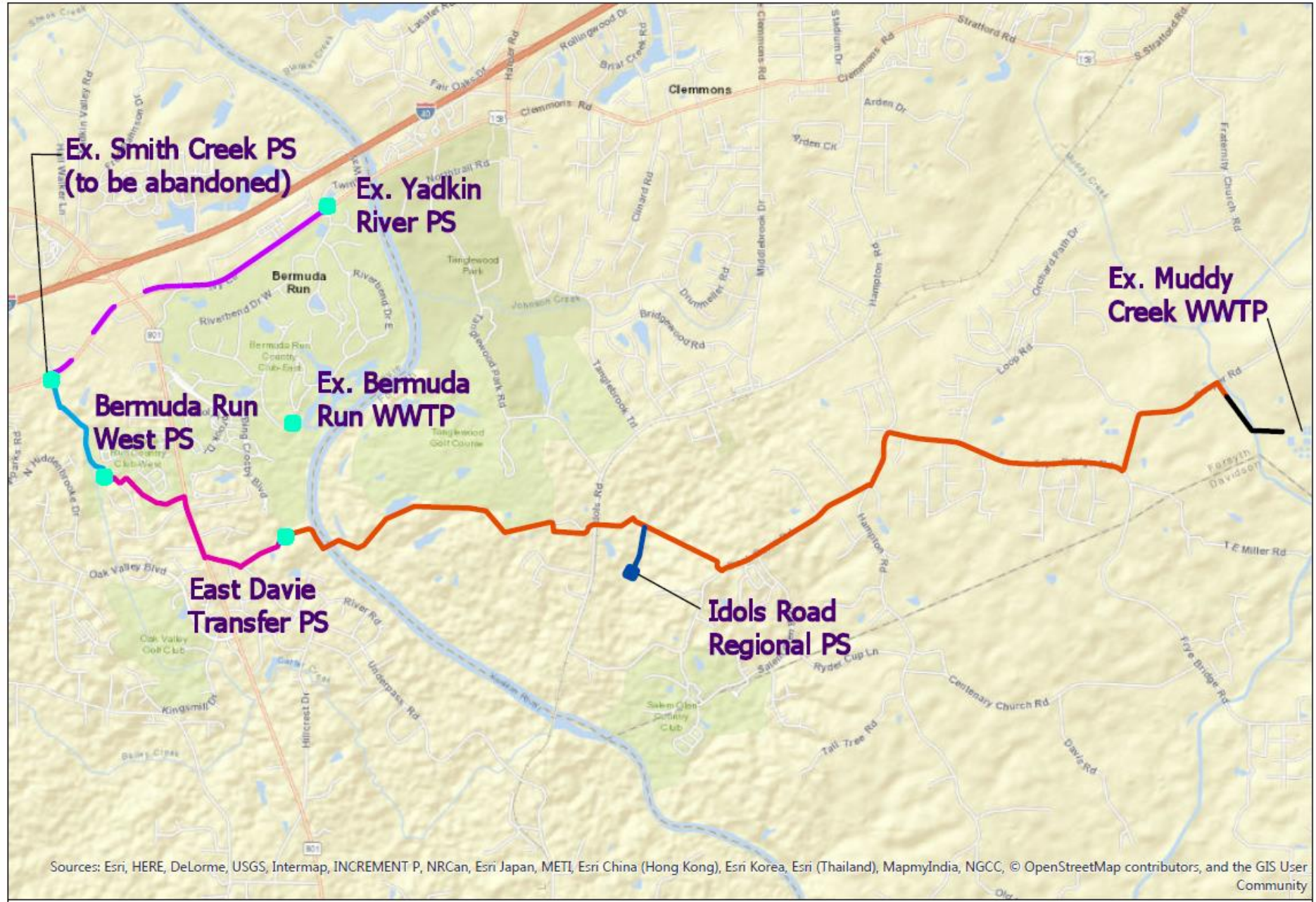
Source: 2015 Census LEHD (OnTheMap) – only jobs that pay state unemployment taxes are included (excludes self-employed and farm workers)

Davie County Housing By Type



Source: US Census Bureau

Wastewater System Upgrades 2018-2020



OVERALL PROJECT LOCATION EAST DAVIE WASTEWATER COLLECTION SYSTEM



School Graduation Rate and Test Scores

Graduation Rate

4 Year Cohort

2008-2009 Entering 9th Graders Graduating 2011-2012 or Earlier

83.2% Davie County Schools

80.4% State

Davie County High School

83.1% Graduation Rate

Davie County Early College High School

92.5% Graduation Rate

Davie County Schools had the highest SAT schools among any of our neighboring school districts, and ranked 11th highest out of 115 school districts in N.C.

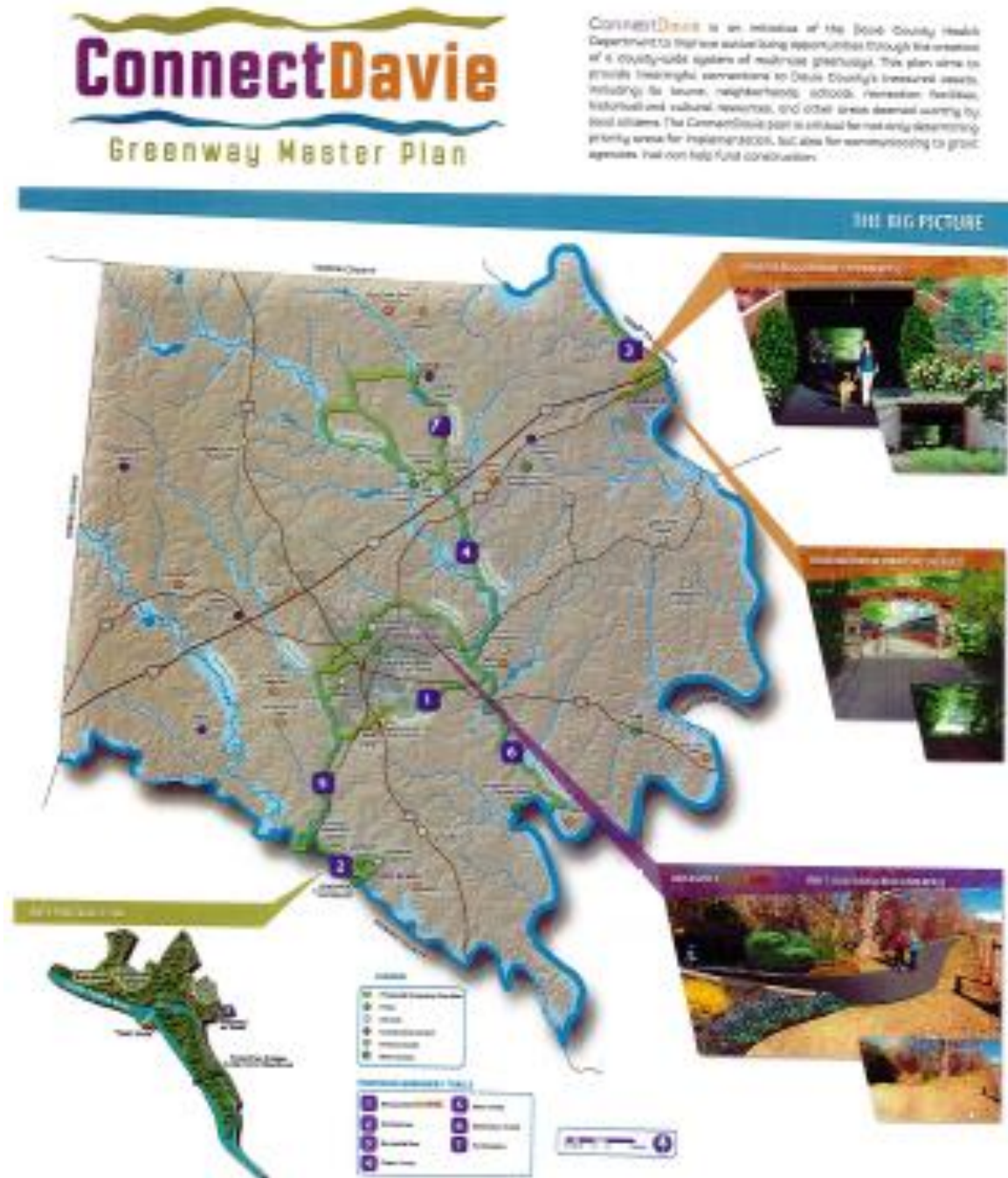
SAT Scores

2011-2012 SAT	# Tested	% Tested	Math Score	CR Score	Writing Score	M+CR+W
Davie County Schools	235	61.8	531	510	487	1528
Early College	35	87.5	522	523	495	1540
United States	1,664,479	52.0	514	496	488	1498
North Carolina	63,271	68.0	506	491	472	1469

Note: United States and North Carolina totals include all schools (public and non-public). Percent tested is the number of students taking the SAT divided by the 8th month 12th grade membership.

Source: Davie County School System 2011-2012 Annual Report

Davie County Proposed Greenway Map



Thanks!

Cameron Colvin

Regional Planner

336.904.0300

ccolvin@ptrc.org



PIEDMONT TRIAD
REGIONAL COUNCIL

336.904.3000 • www.ptrc.org