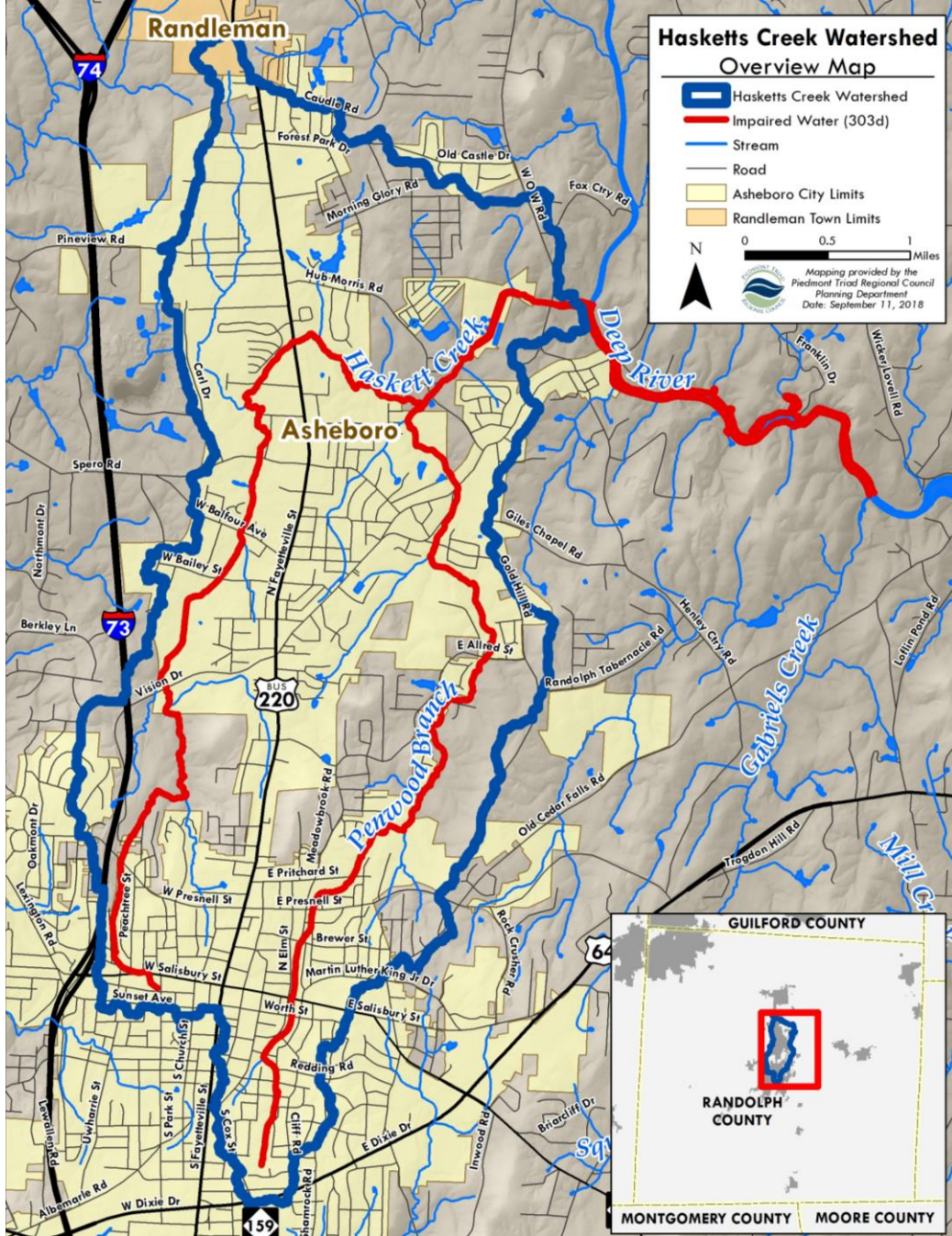




HASKETT CREEK WATERSHED PLAN

STAKEHOLDER MEETING #1



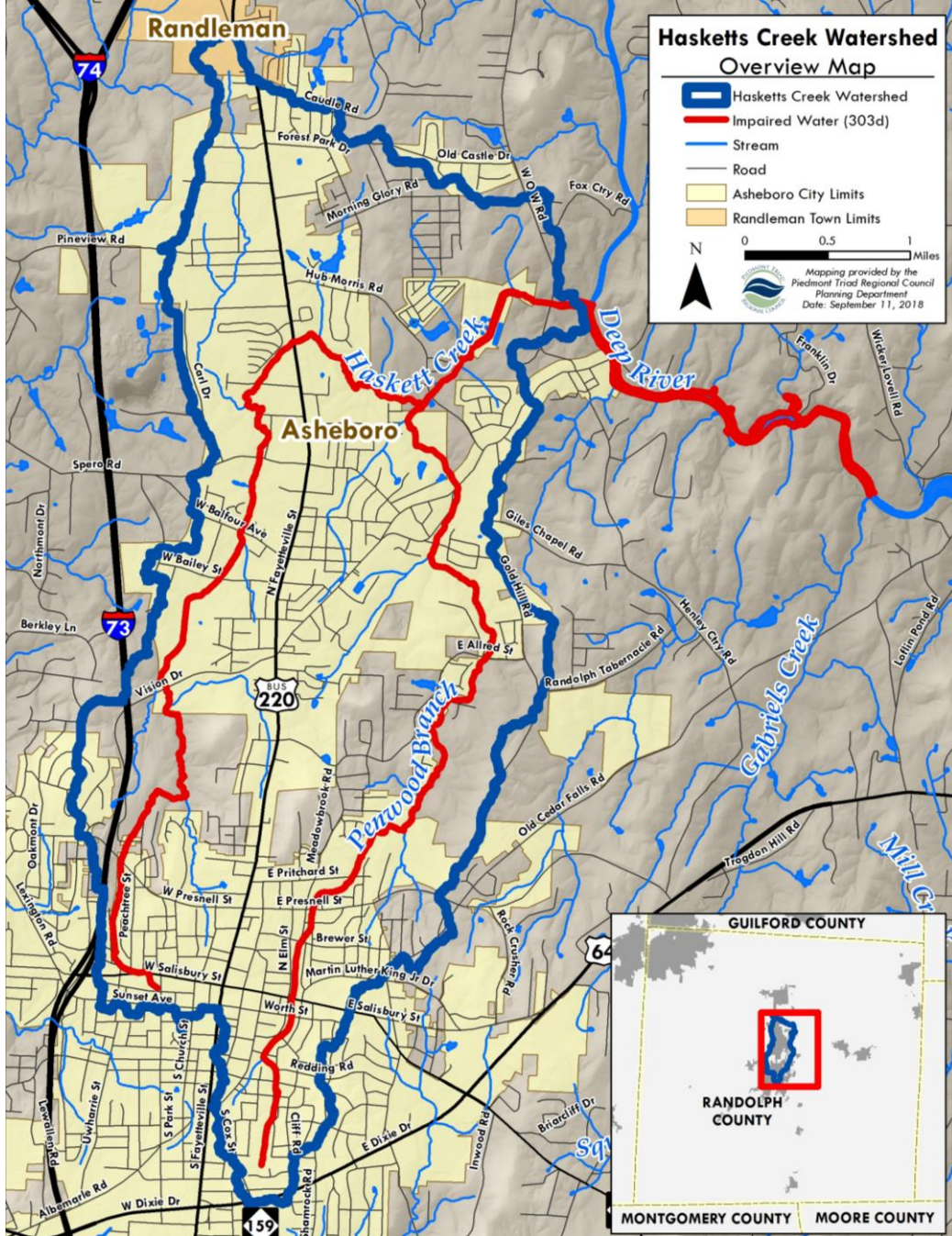


BACKGROUND

- NC DWR seeking to increase number of areas with approved watershed plans to fulfill federal obligations
- Haskett Creek is 1 of 58 watersheds prioritized for plan development
- State reached out to PTRC to help develop plans for watersheds within our region

Water Quality

- Listed on 303(d) list for several decades
- Haskett Creek – DO*, “Poor” Benthos, & Copper
- Penwood Branch – “Fair” Benthos
- Likely caused by variety of factors



GRANT OVERVIEW

- Applied for & awarded 205(j) grant to support project
- Somewhat limited budget: \$18,201
- Will need to track in-kind match from project partners
- Timeline: Now – March 31st, 2020

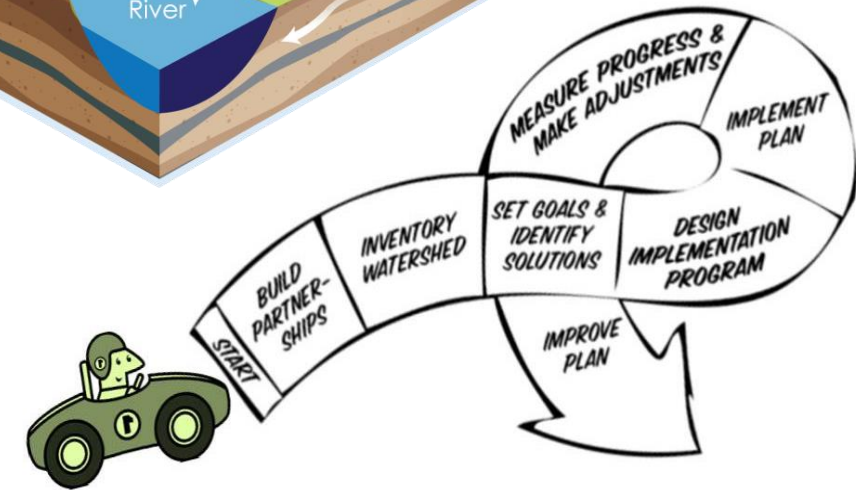
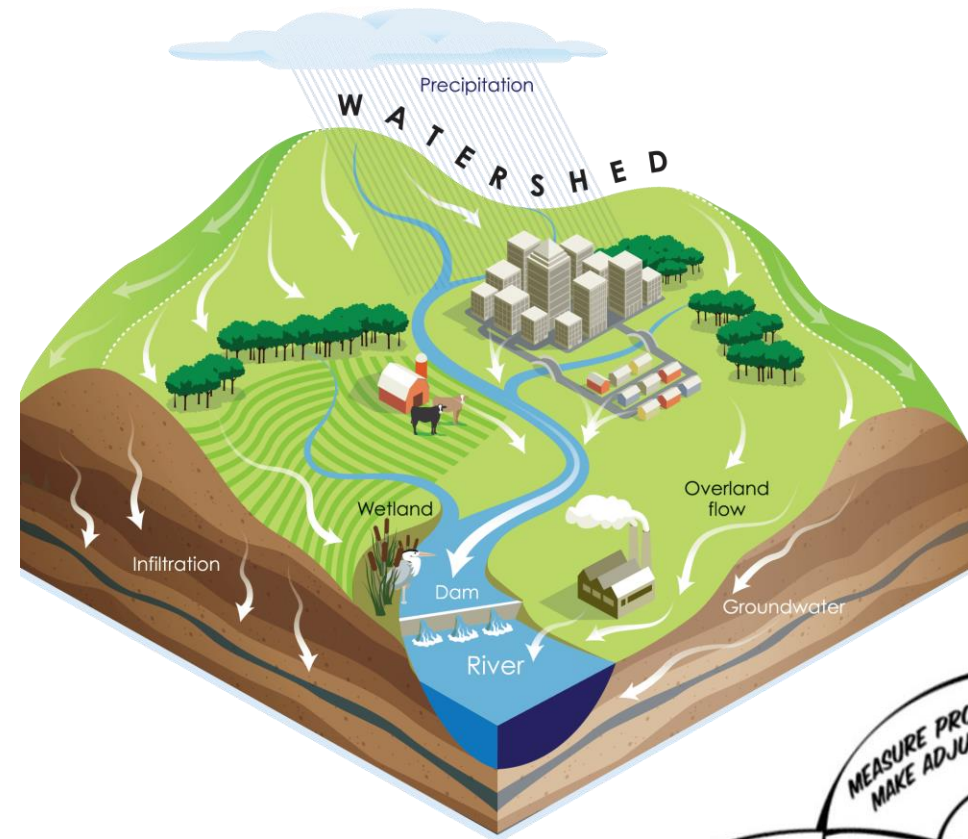
Project Goals

- Assemble stakeholder group
- Identify sources of impairment
- Develop restoration goals
- Identify solutions
- Develop a realistic implementation plan



WHAT IS A WATERSHED PLAN?

- Detailed work plan that identifies threats to water resources and a framework to address these issues
- In order to qualify for 319 funding, EPA requires all watershed plans include 9-elements:
 - A. Causes and sources of pollution
 - B. Water quality goals & load reductions needed
 - C. Management measures to address water quality concerns
 - D. Technical & financial assistance needed
 - E. Educational outreach component
 - F. Project schedule
 - G. Interim, measurable milestones
 - H. Indicators to measure progress
 - I. Monitoring component





PROJECT SCOPE & SCHEDULE

Haskett Creek Watershed Plan			Proposed Project Schedule											
			1st Quarter			2nd Quarter			3rd Quarter			4th Quarter		
			Month											
Task #	Sub-Task	Task Description	1	2	3	4	5	6	7	8	9	10	11	12
1		Watershed Inventory												
	1.1	Desktop Analysis	★											
	1.2	Fieldwork				★	▲							
2		Set Restoration Goals						★	▲					
3		Identify Solutions								★				
4		Estimate Reductions										▲		
5		Develop Implementation Plan									★	▲		
6		Draft Final Report/Web Map											★	▲

★ Stakeholder Meeting

▲ Deliverable



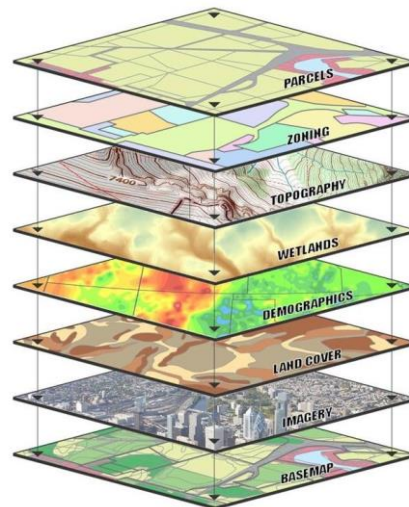
WATERSHED INVENTORY

The watershed inventory will examine potential sources of pollution and include information about natural characteristics, land uses, activities, and other factors that could influence water quality.



Desktop Analysis

- Water Quality Data
- Aerial Imagery
- GIS Analysis
- Ordinance Review



Field Work

- Confirm initial findings
- Identify additional areas of concern/BMP opportunity areas
- NC DWR has developed series of field work applications to assist with watershed planning





WATERSHED PLANNING APPLICATIONS

Source & Conveyance Identification Tool (SCITS)

- Tool to help tag and rank sources or conveyances of pollution
- Can also help prioritize project sites

Field Observations & Assessment Tool (FOATS)

- Tool for collecting field observations on water resource conditions

Qualitative Flow Comparison Method (QFCM)

- Helps document changes in flow as a result of SCMs or other activities

Water Resource Valuation Tool (WR Val)

- Helps value water resources and evaluate return on investments for SCMs or other watershed management projects

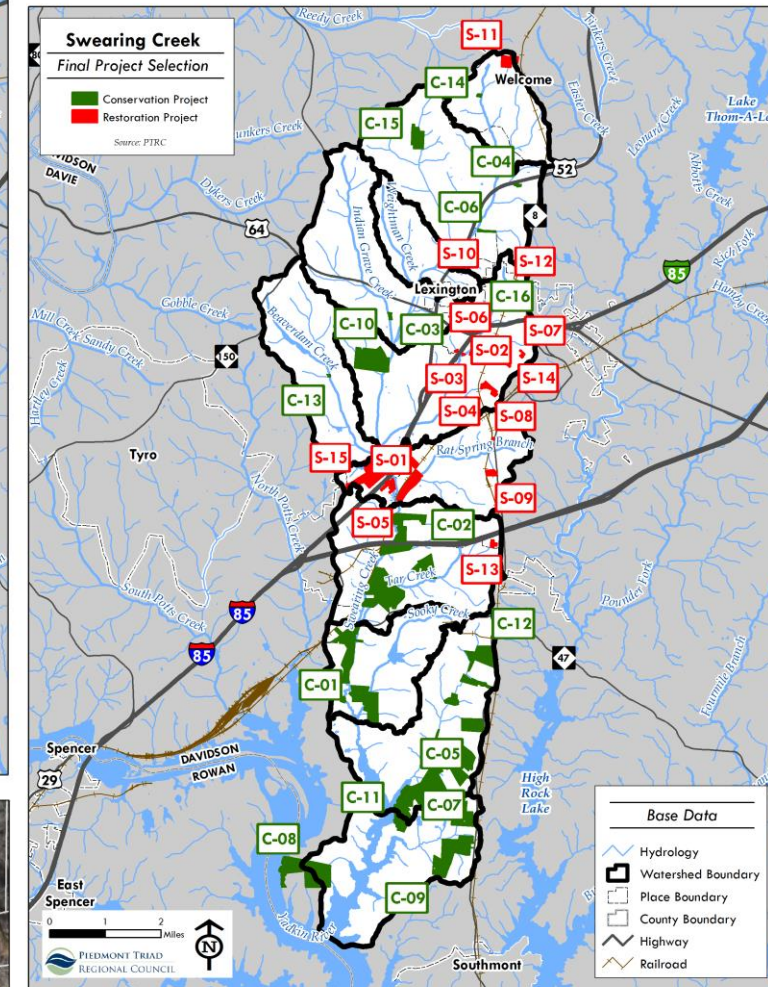
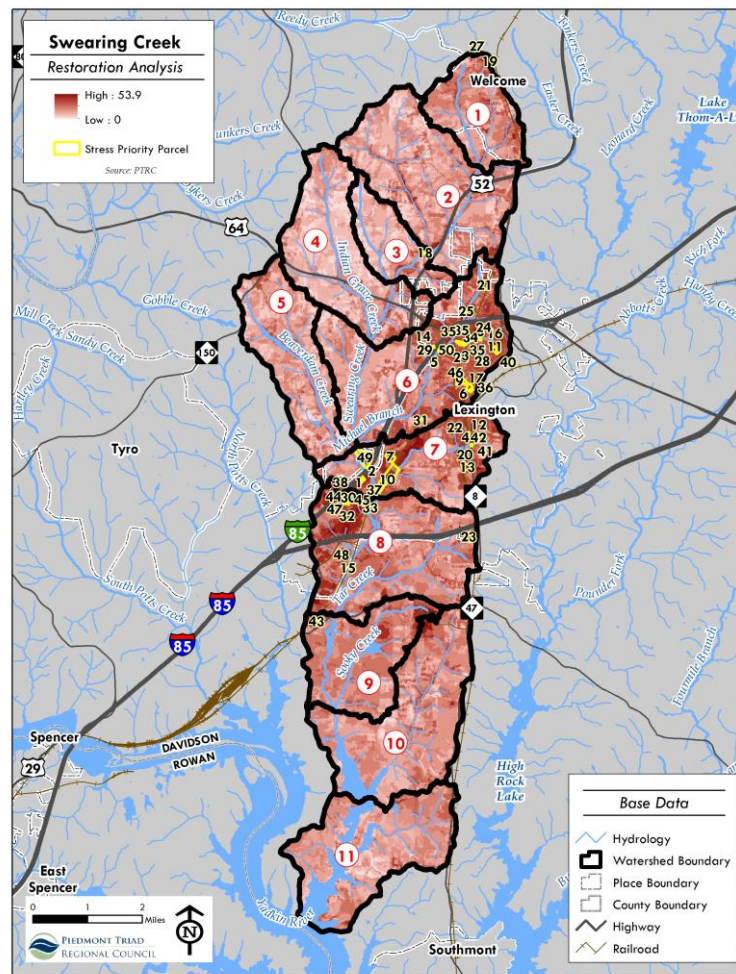
Other Tools in Development

- Implementation Project Tracking
- Barrier Evaluation Tool
- Protection Assessment Tool



IDENTIFYING SOLUTIONS

- Used combination of GIS modelling & fieldwork on previous projects
 - Stress Model
 - Conservation Model
- Project Atlas
- Could also include policy/program recommendations





STORY MAPS



What are they?

- Interactive web map template that allows users to combine maps with narrative text, images, and multimedia content

Benefits

- Accessibility
- Interactive
- Simplify Implementation

Examples

- <https://grid-arendal.maps.arcgis.com/apps/Cascade/index.html?appid=caf411c40c3442b782406de631bddb2f>
- Haskett Template:
 - <https://ptrc.maps.arcgis.com/apps/MapSeries/index.html?appid=a6e3940d17904d659f0b6477c8920b63>



DISCUSSION

1. What is already being done?
2. What data is available?
 - What do we need to do to get access?
3. What other stakeholders/community groups should we reach out to?
 - Any that would be willing to assist with fieldwork?
4. Outreach strategy?
 - Any educational opportunities/events to tie into?
5. Any other things we should consider?





THANK YOU



ccolvin@ptrc.org



www.ptrc.org

