



Whitaker Park

Overview

- Gift transacted in April 2017
- 1.7 million square feet
- Approximately 120 acres
- West and East Campus
- Owned by WPDA, Inc., a 501(c)(3) not for profit





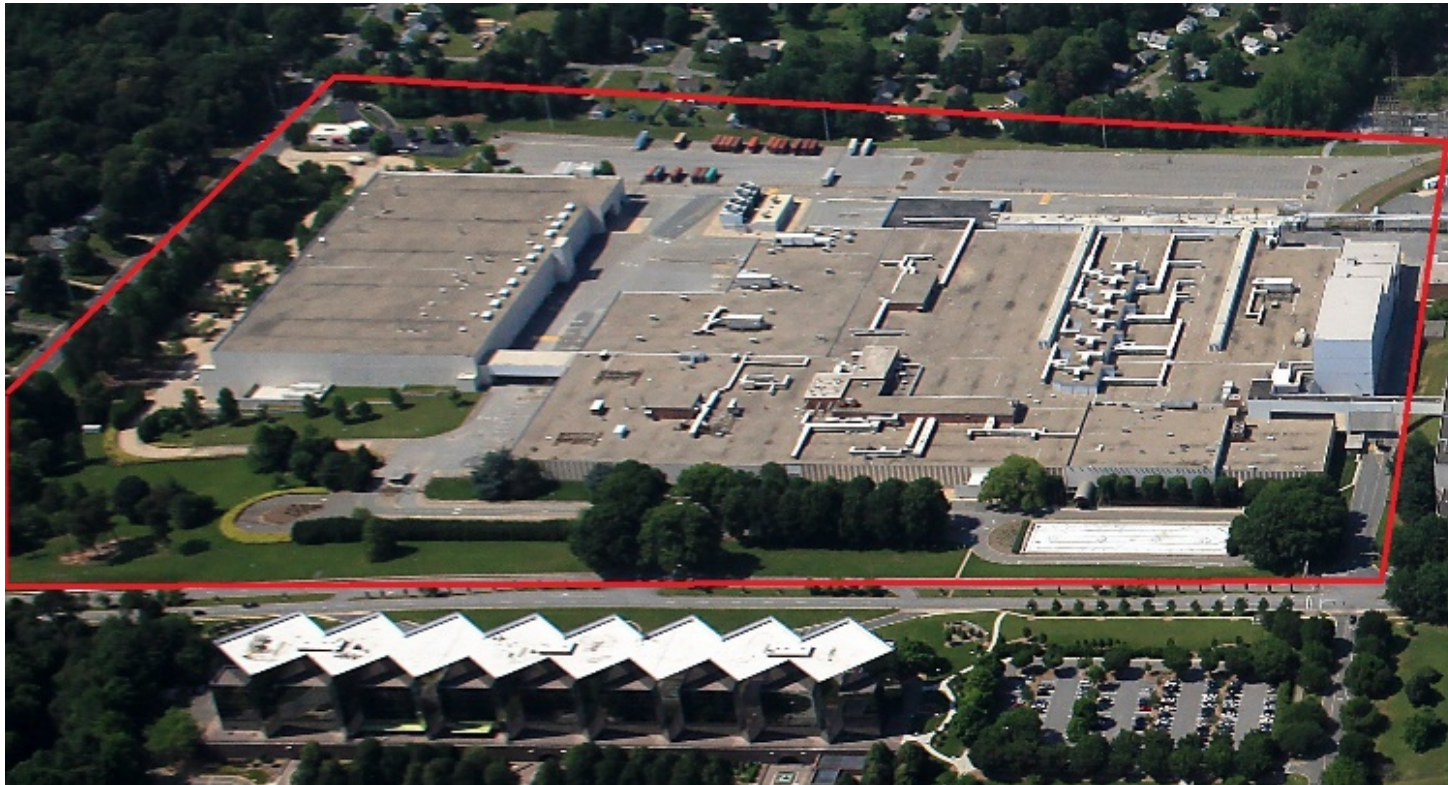
Whitaker Park

Targets

- To be re-developed as a mixed use business park
- Advanced manufacturing
- Assembly
- Distribution
- Lab
- Data Centers
- Residential
- Hotel

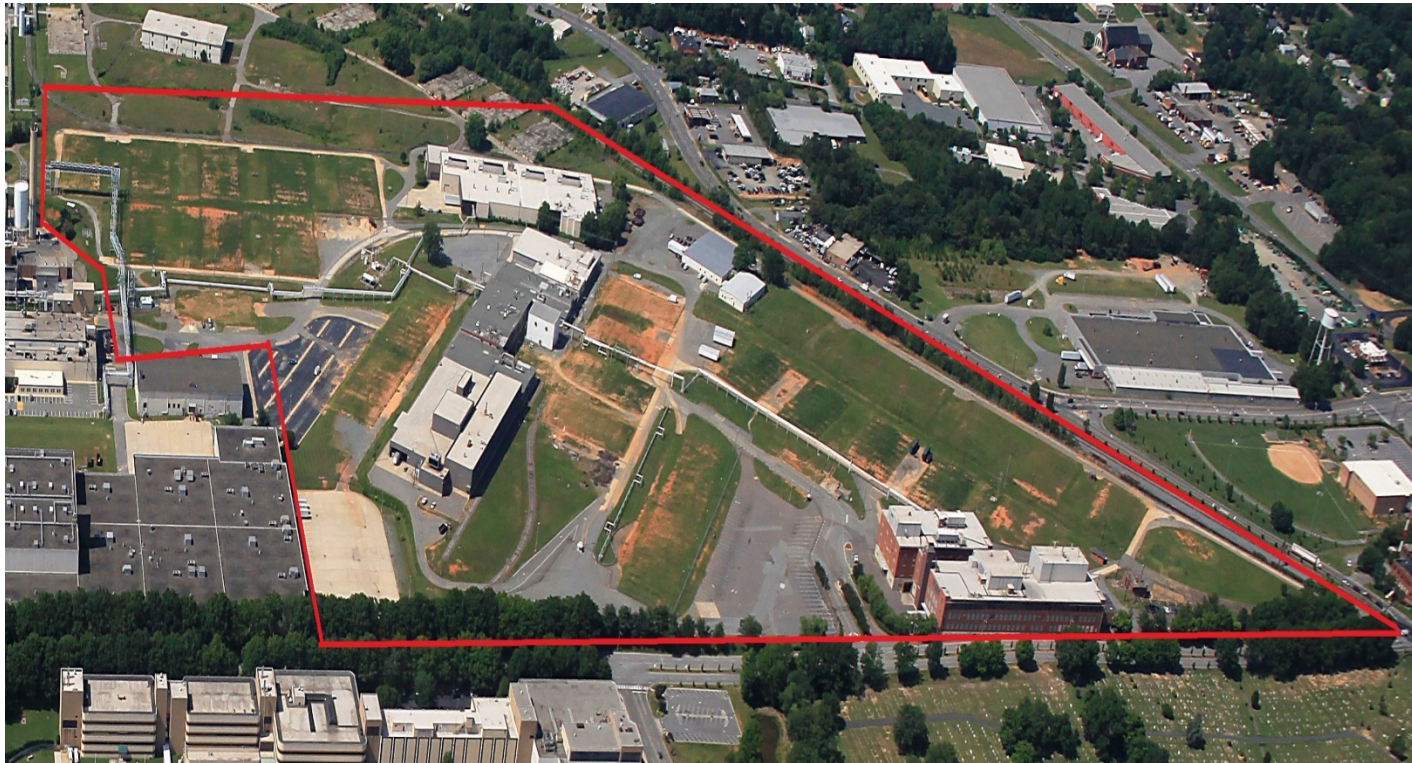


Whitaker Park- West Campus



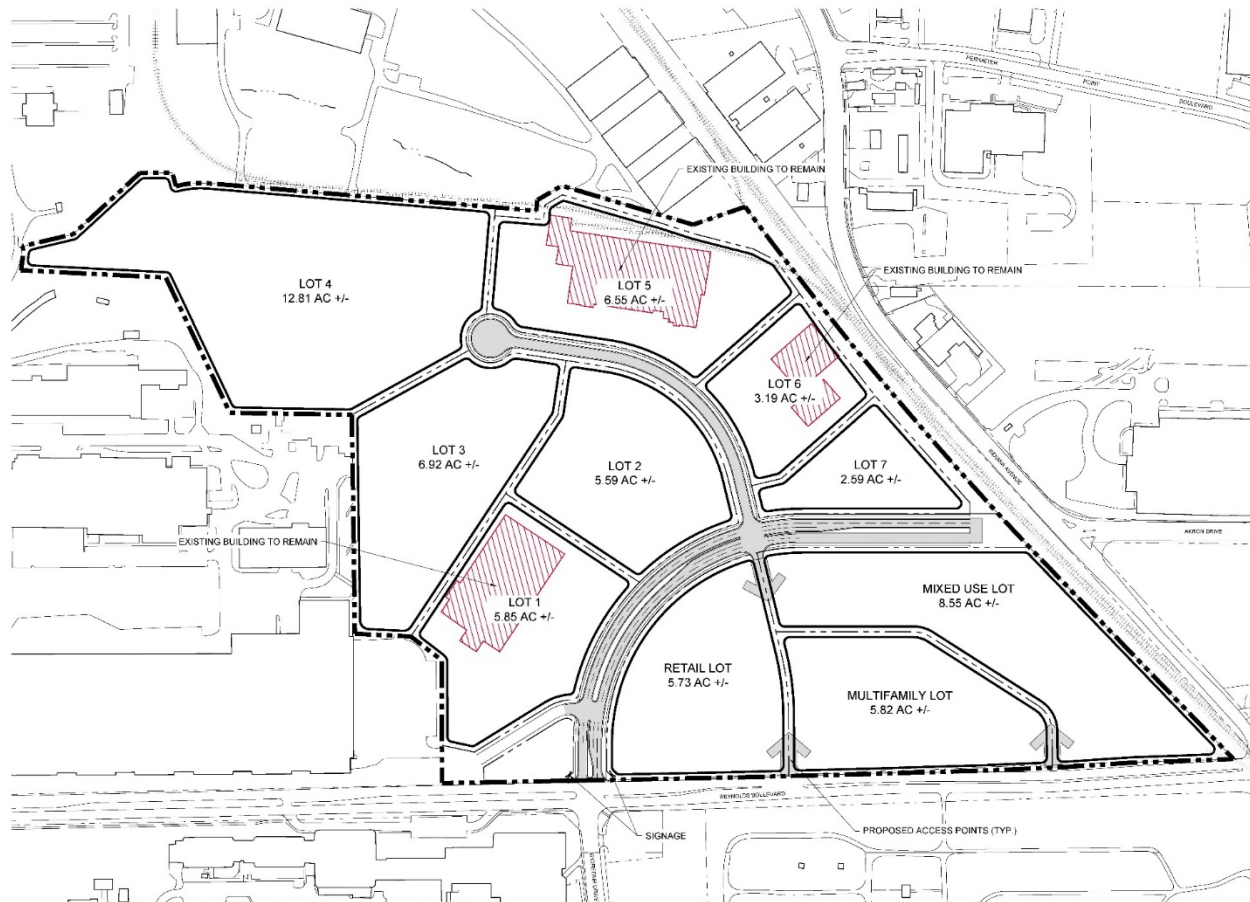
- Two facilities
- 601-1/850,000 sq/ft
- 601-11/426,000 sq/ft
- Approximately 50 acres
- Cook Medical purchased 601-1 in December 2019
- 601-11 under discussion with two projects

Whitaker Park-East Campus



- Approximately 70 total acres
- 8 buildings
- 605-12: 95,000 sq/ft
- 605-11,1,13 and 130: totals 150,000 sq/ft
- 605-7 and 605-10 total 26,450 sq/ft
- 2-1 and 2-1: 214,000 sq/ft- Under Contract with company looking to utilize Opportunity Zone funds.

Whitaker Park-East Campus Plan



Development Plan

- Road Construction to start soon.
- Completion by end of 2019.
- Working with NS Rail for a crossing to Akron Drive.