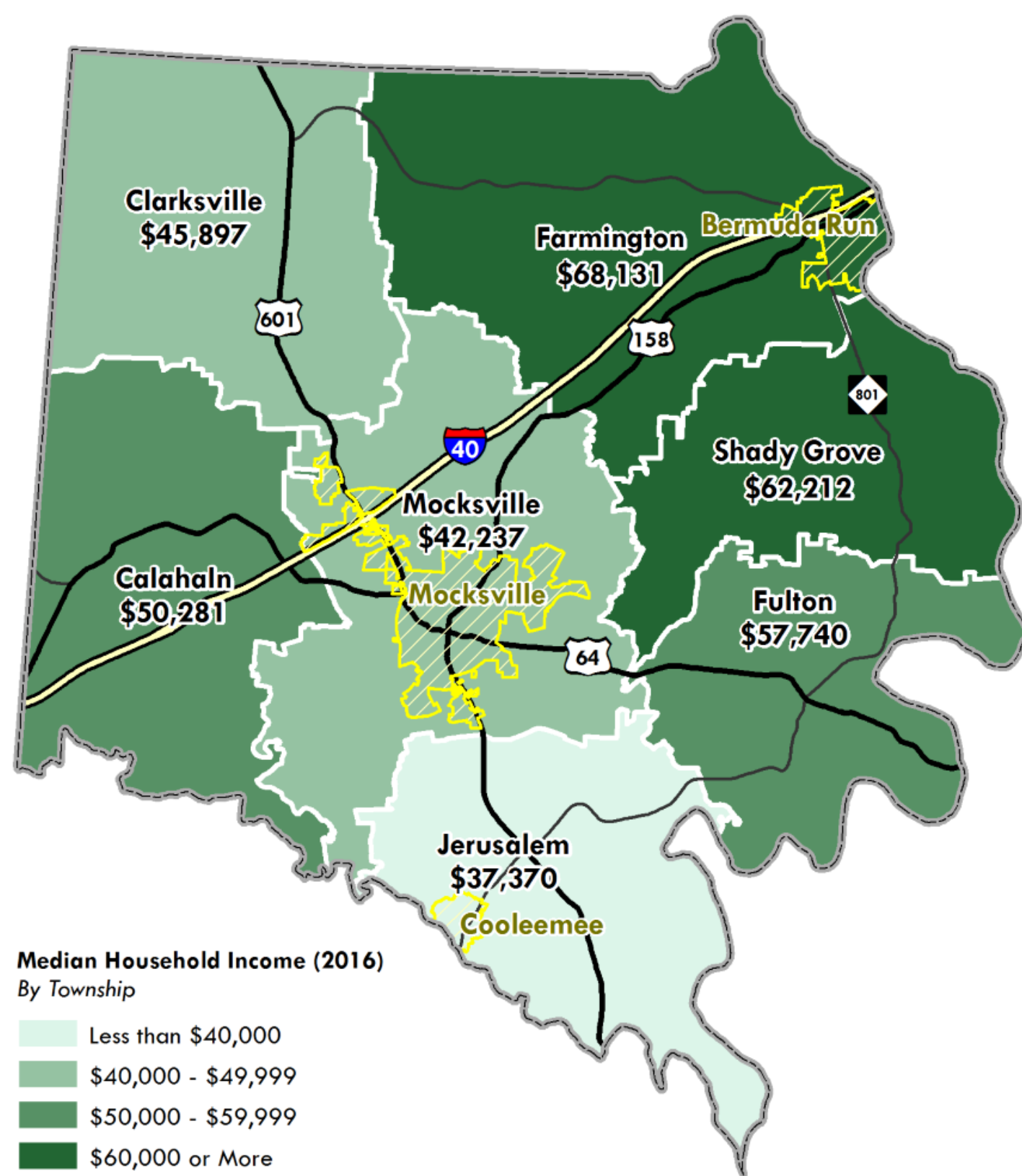


ECONOMIC DEVELOPMENT



Davie County had the highest job growth in the Piedmont region during FY 2010-2016.

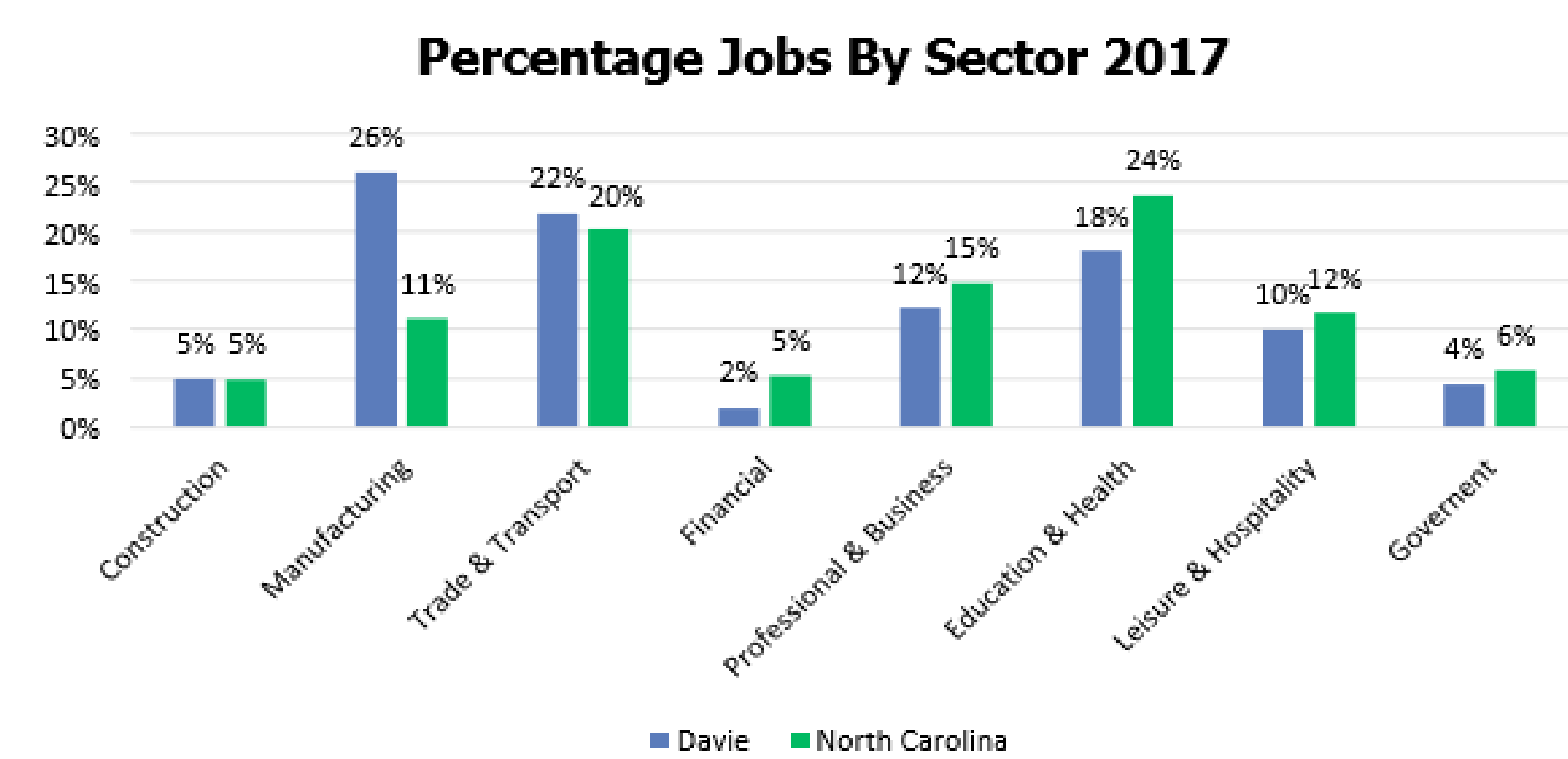
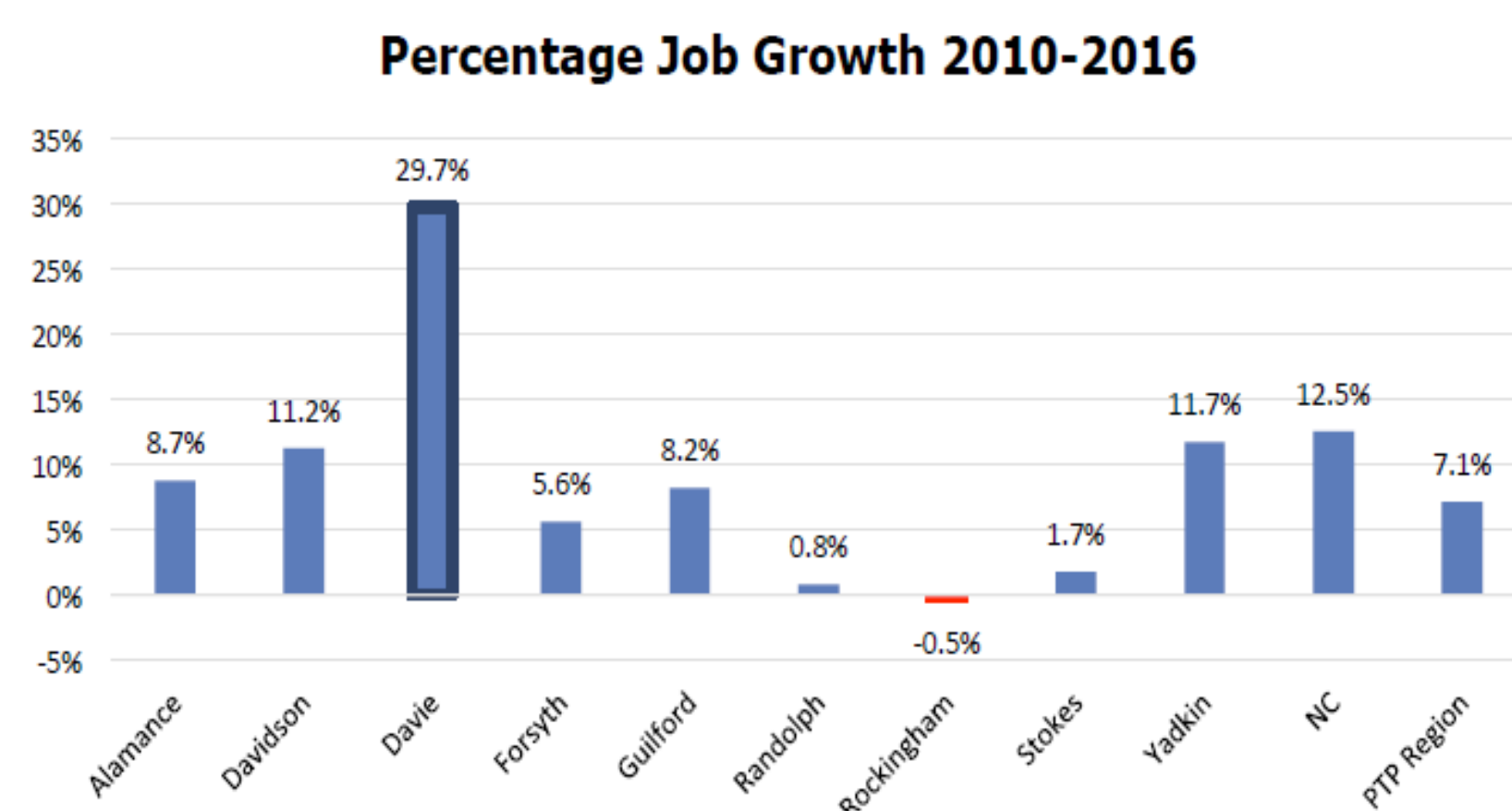
- 29.7% job growth in Davie County during FY 2010-2016.
- The runner-up county is Yadkin at 11.7%

Manufacturing jobs dominate Davie County.

- They make up 26% of all jobs, compared to 11% statewide.
- The second largest sector is Trade and Transport with 22% of jobs.

Workforce Development is the prime focus area of Davie County's Economic Development initiatives.

- Davie County's median income is \$53,493, which is higher than North Carolina median income \$52,752 and lower than the US median income \$60,336.



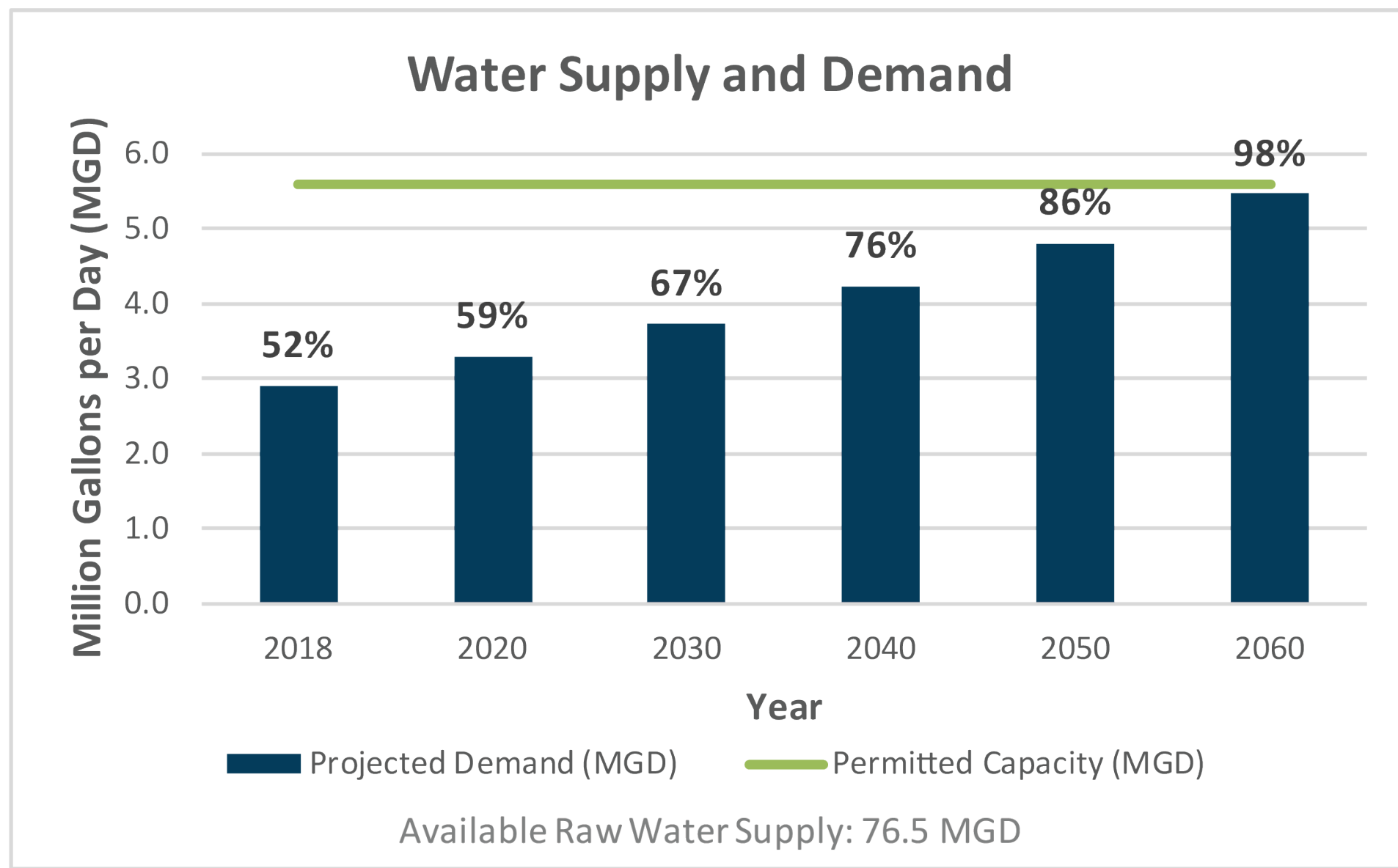
GOALS

1. Promote aggressive client generation, marketing and branding.
2. Improve the Davie County product.
3. Implement workforce improvements.
4. Promote leadership development.

COMMENTS

What else would you like to see?

WATER AND SEWER



Davie County provides drinking water to 26,500 people.
• A majority of water in Davie County is used for residential purposes (86%).

Davie County has significant water resources to support future growth.

- Water demand averages 2.91 million gallons per day (MGD) and is anticipated to increase to 5.46 MGD by 2060.
- Davie County Water Treatment Plants have a permitted capacity of 5.6 MGD and 73.5 MGD of available raw water supply.

Davie County provides sewer service to approximately 2,480 homes & businesses.

- Davie County's Cooleemee Wastewater Treatment Plant is rated to treat and discharge 1.5 MGD and averages daily flows of 0.49 MGD.

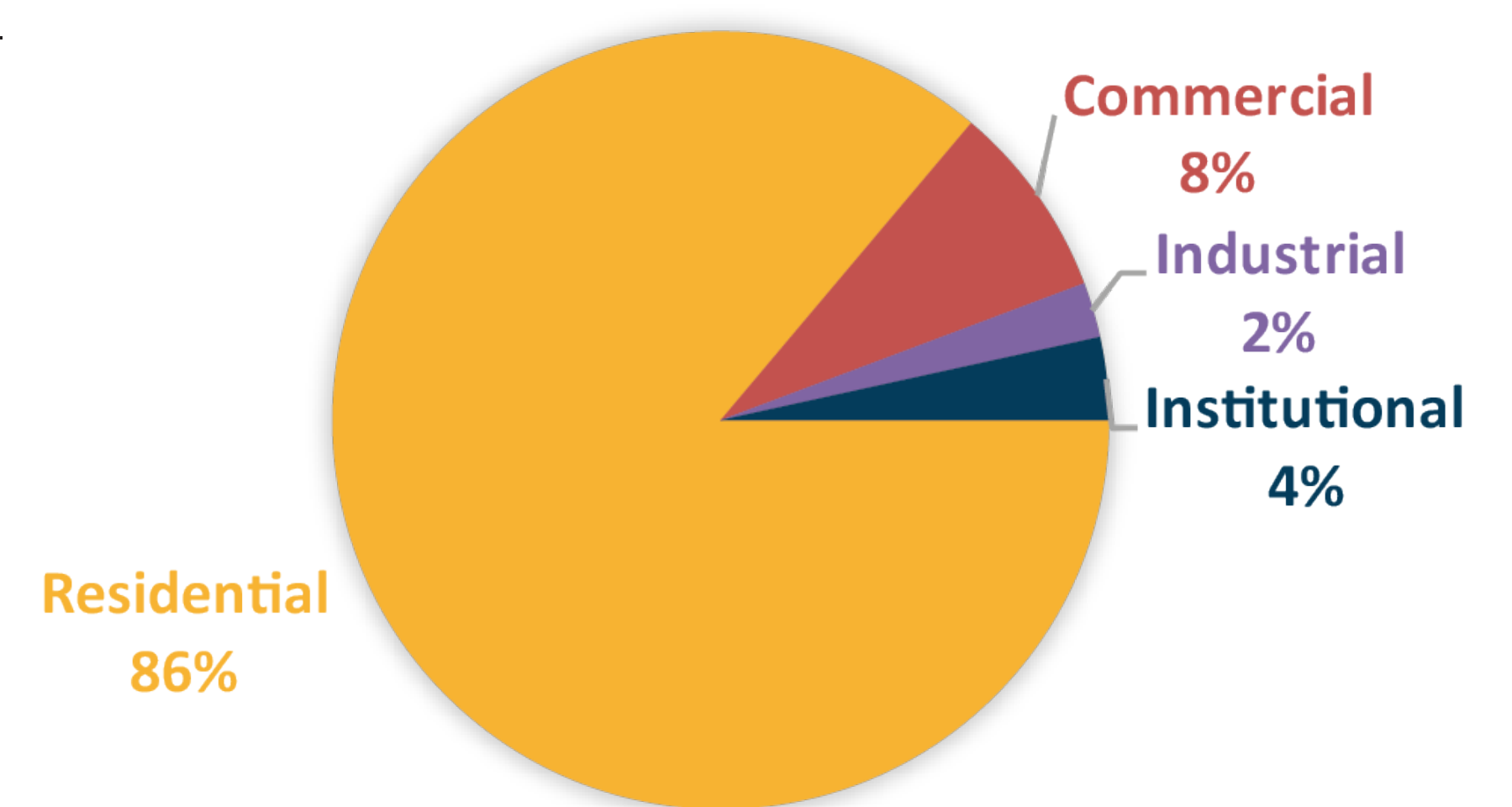
Davie County is working to expand sewer services in Eastern Davie.

- Over the next few years, Davie County will be installing over 42,000 feet of new sewer lines in eastern Davie to accommodate future growth.
- Davie County works closely with Winston-Salem/Forsyth County Utilities Commission to treat wastewater in the eastern part of the County.

Several county residents rely on private septic systems.

- There are an estimated 12,417 septic systems in the County - 253 reported malfunctions between 2013 and 2018.
- Much of the soil throughout the county is "somewhat limited" to "very limited" for septic systems due to its high clay content.

WATER USE BY TYPE



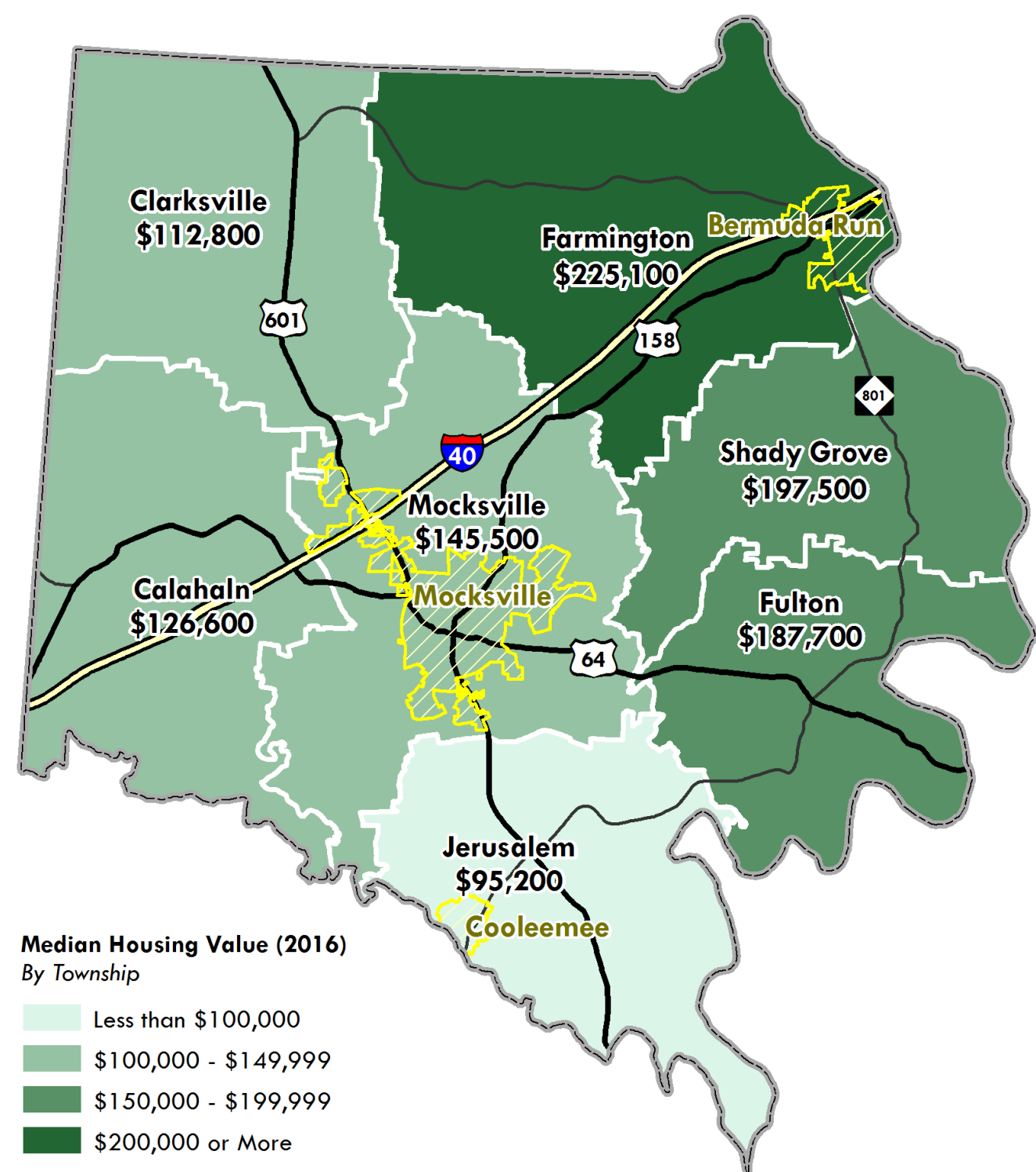
GOALS

- 1. Establish wastewater capacity allocations for Davie County sewer service to municipalities.**
- 2. Work with the Town of Mocksville to coordinate the extension and improvement of sewer service for primary and secondary growth areas.**
- 3. Increase utilization of existing sewer infrastructure.**
- 4. Maximize the public benefit of extending water and wastewater infrastructure.**

COMMENTS

What else would you like to see?

HOUSING



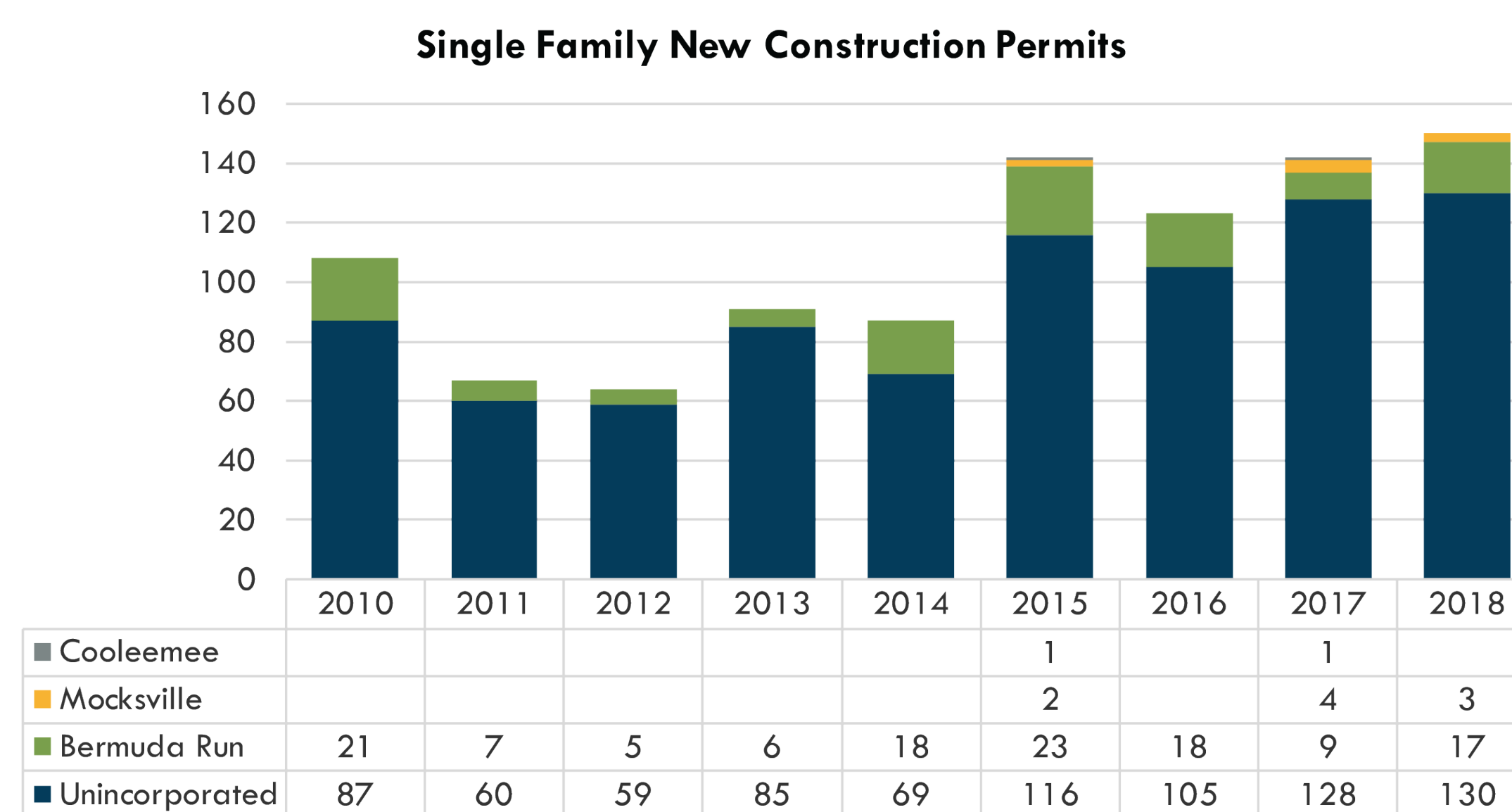
The vacancy and rental rates are increasing.

- The vacancy rate rose from 8% in 2000 to 14.2% in 2016.
- The rental rate rose from 16.7% in 2000 to 22.7% in 2016.

The majority of the housing stock (77%) consists of single family detached dwelling units.

- The other housing stock are mobile homes (18%) and multi-family units (5%).

Between 2010 and 2018, 974 new single family construction homes and 5 apartment complexes (total of about 302 units) have been built.



GOALS

1. Increase housing options across Davie County and its municipalities, including multi-family, single-family, patio homes, and other options where infrastructure allows.
2. Improve existing housing stock age and quality.
3. Increase housing supply.
4. Increase education and awareness around housing options and types.
5. Improve the appearance of higher density developments.

COMMENTS

What else would you like to see?

HEALTH

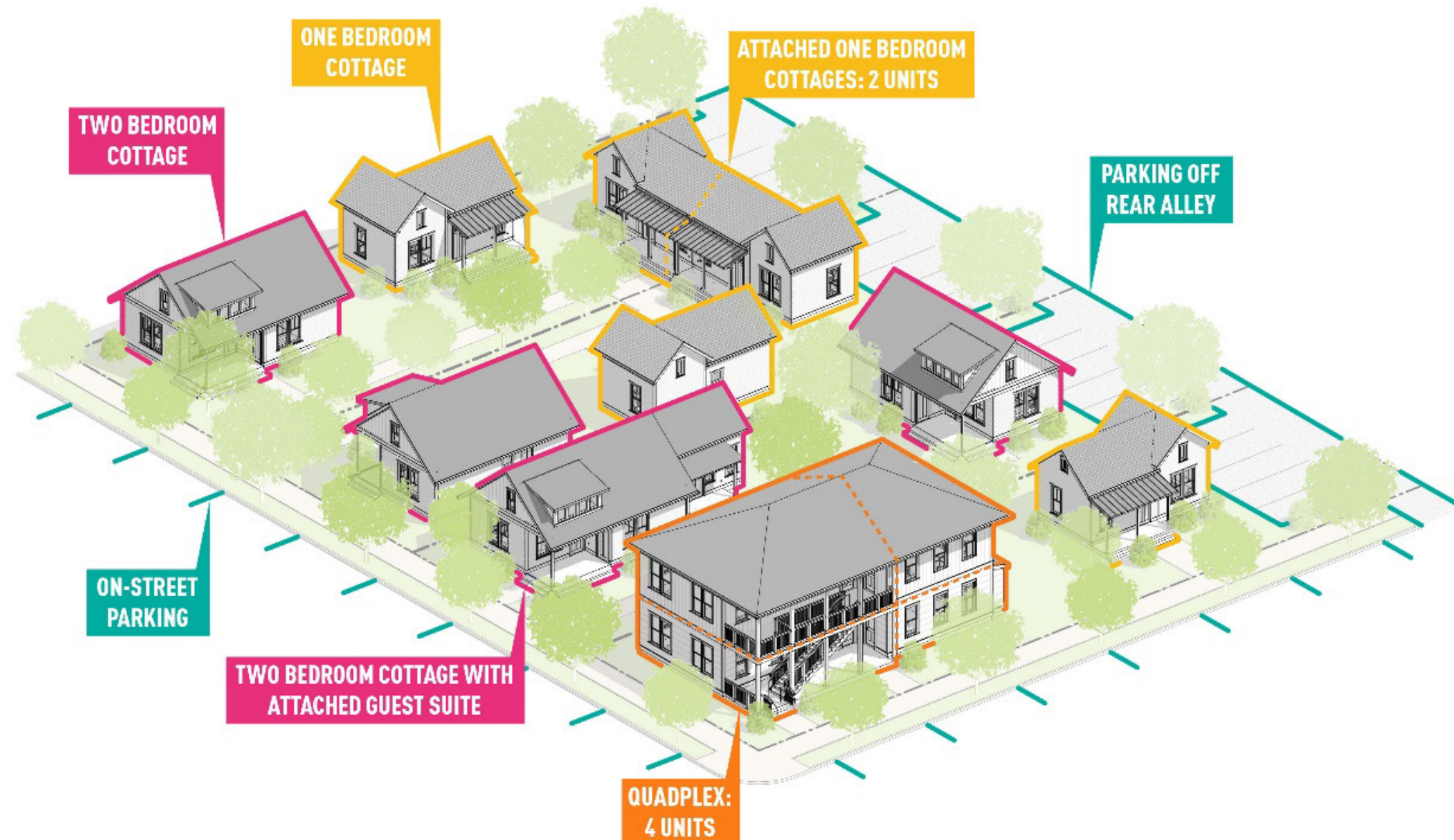
The older adult population (65+) is the fastest growing demographic.

- The population has nearly doubled since the year 2000
- Aging service priority areas are: housing, transportation, and financial wellbeing.

The ratio of doctors to population is well below the state average.

- In 2017, Davie County had 35 physicians with a rate of 8.2 physicians per 10,000 population compared to a rate of 23.8 physicians per 10,000 population across the state.

Housing options for the aging population are a top priority from surveyed seniors.



	Davie		NC
	Count	Rate	Rate
All Physicians	35	8.2	23.8
Primary Care Physicians	13	3.0	7.0
Family Practice	8	1.9	2.6
Internal Medicine	1	0.2	1.9
Obstetrics/Gynecology	1	0.2	1.1
Pediatric	4	0.9	1.5
Geriatrics	0	0.0	0.2
Dentists			
Dentists	14	3.3	5.0
Dental Hygienists	30	7.0	6.0
Nurses			
Registered Nurses	209	48.9	100.7
Nurse Practitioners	10	2.3	6.5
Certified Midwives	0	0.0	0.3
Licensed Practical Nurses	62	14.5	17.9

Health Care Professionals (2017)
Source: NC Health Professions Data System

Leading Causes of Death in Davie County in 2015

Rank	Cause	Number	%
1	Cancer	109	22.7
2	Diseases of heart	83	17.3
3	Cerebrovascular diseases	38	7.9
4	Chronic lower respiratory disease	31	6.4
5	Alzheimer's disease	21	4.4
6	All other unintentional injuries	20	4.2
	Influenza and pneumonia	20	4
8	Diabetes mellitus	12	3
	Septicemia	12	2.5
10	Chronic liver disease and cirrhosis	9	1.9
	All other causes (Residual)	126	26.0
Total Deaths - All Causes		481	100

GOALS

1. Continue to enhance data driven approaches to understanding population health.
2. Explore initiatives and investments that increase community access to health-care.
3. Support efforts for preventative care and chronic disease management.
4. Support and expand efforts to address drug misuse and abuse prevention and education.
5. Ensure that seniors and other vulnerable populations are prioritized in service design and provision.
6. Take advantage of emerging opportunities through Medicaid transformation.

COMMENTS

What else would you like to see?

AGRICULTURE & NATURAL RESOURCES

Davie County farms support the local economy.

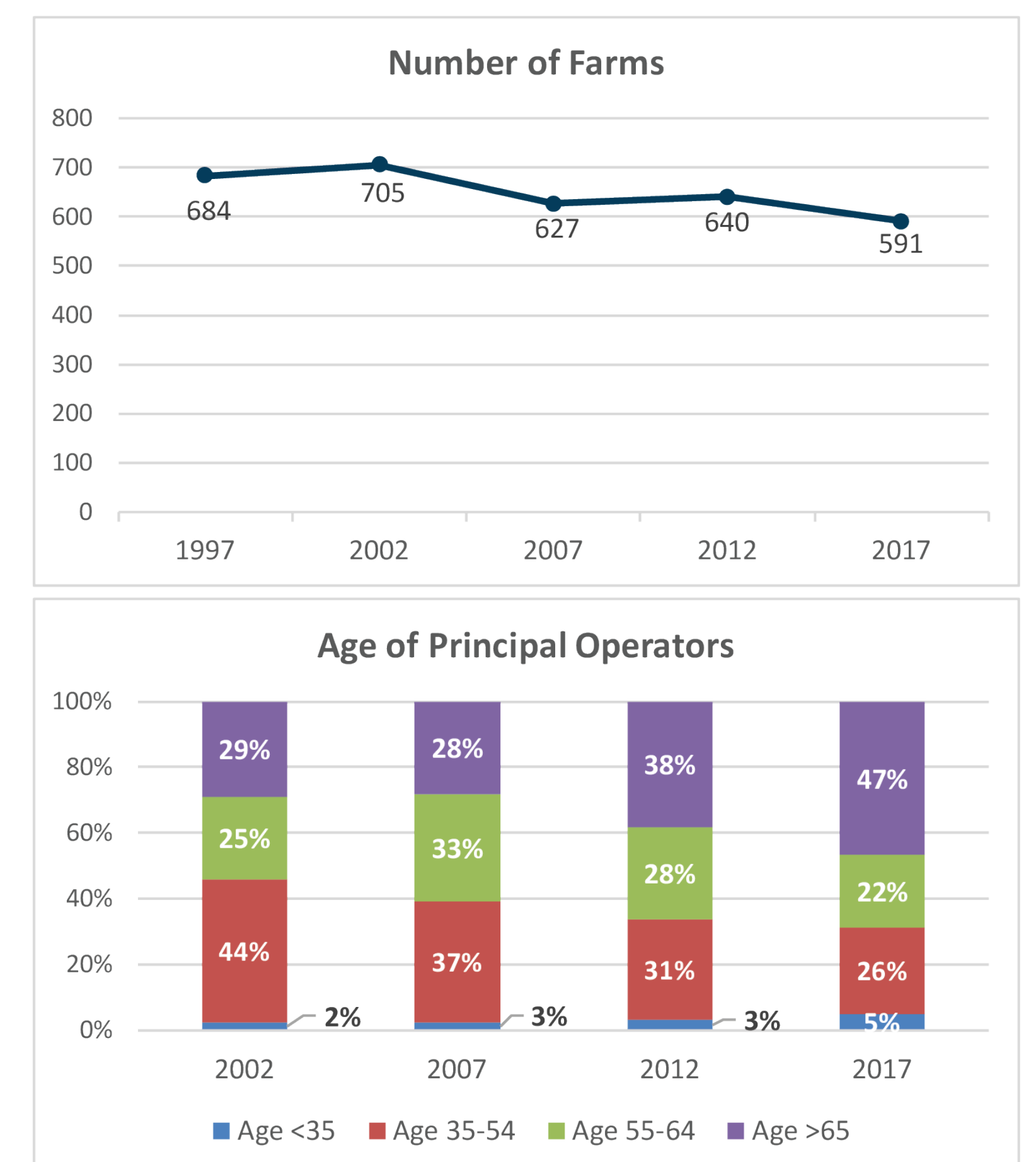
- Davie County farms employ 265 workers and generate \$26.9 million in gross sales annually. (Source: Census of Agriculture)
- Forestry, logging, and forest product industries in Davie County help support 707 jobs and had a total economic contribution of approximately \$149.3 million in 2016. (Source: NCSU Extension Forestry)

While there are fewer farms and cropland in Davie County, the amount of farmland is increasing.

- Over the last 20 years, the number of farms and amount of cropland in Davie County fell by 13.6% and 11.7%, respectively. However, during that same time total farmland increased by 9%. (Source: Census of Agriculture)

Farmers in Davie County are getting older.

- Almost half of principal farm operators in Davie County are 65 or older. (Source: Census of Agriculture)
- Between 2002 and 2017, the average age of principal farm operators increased from 57.2 to 60.9. (Source: Census of Agriculture)



GOALS

1. Promote farmland protection through Present Use Value taxation.
2. Promote farmland protection through Voluntary Agriculture Districts and Enhanced Voluntary Agricultural Districts.
3. Promote the value and quality of locally grown foods.
4. Promote outreach and education on land taxation, estate planning, conservation easements and development planning.
5. Support agricultural training and education at the K-12, community college and university levels.
6. Support marketing and production training and facilitate greater diversity in agricultural enterprises.
7. Maintain and encourage open dialogue between growers and elected officials.
8. Identify and prioritize prime farmland that is most at risk and develop strategies with landowners to preserve their land.
9. Strengthen support for agricultural economic development.
10. Strengthen disaster preparedness for disease, drought and other natural disasters.
11. Continue promotion of Best Management Practices for conservation of land and natural resources.

COMMENTS

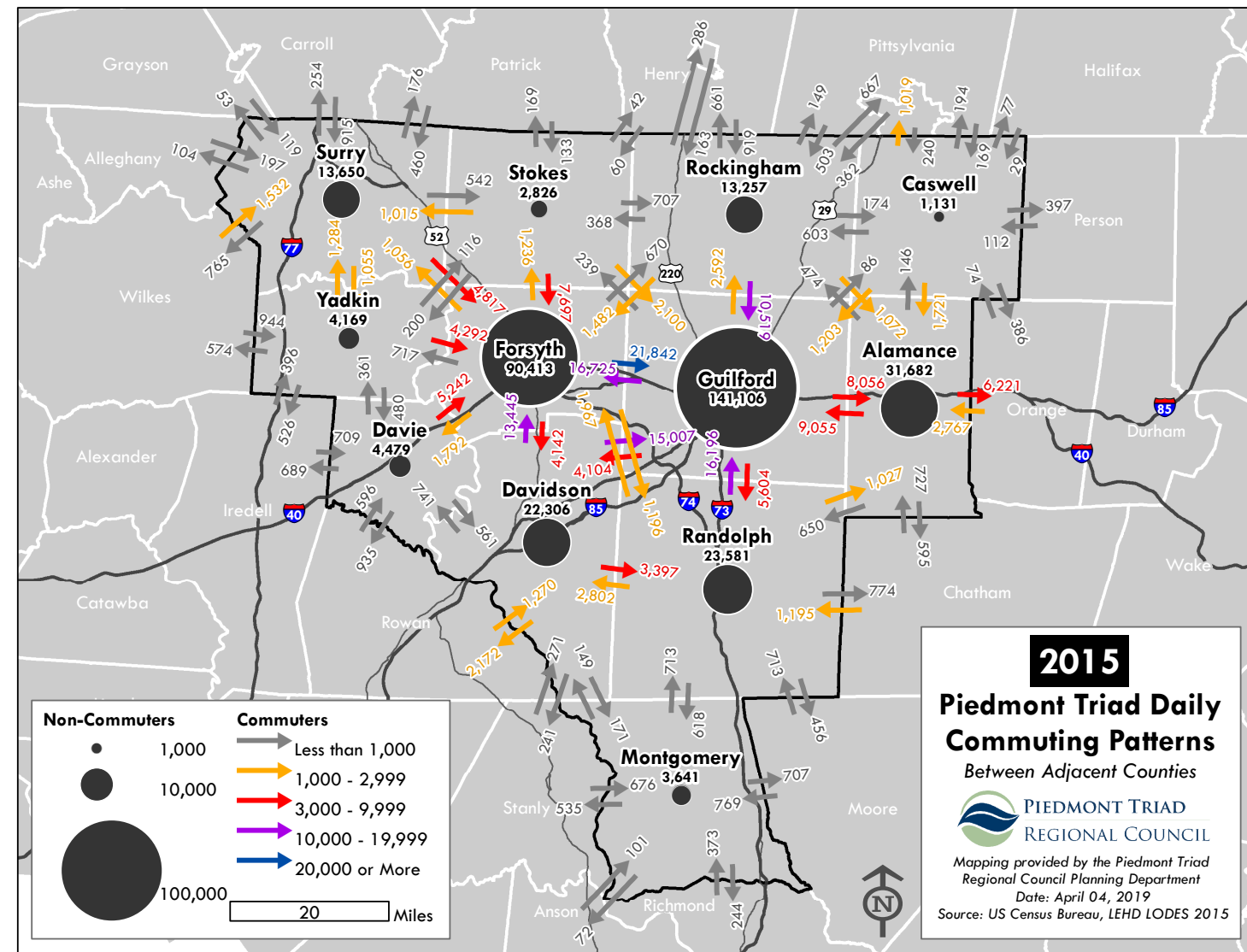
What else would you like to see?



TRANSPORTATION

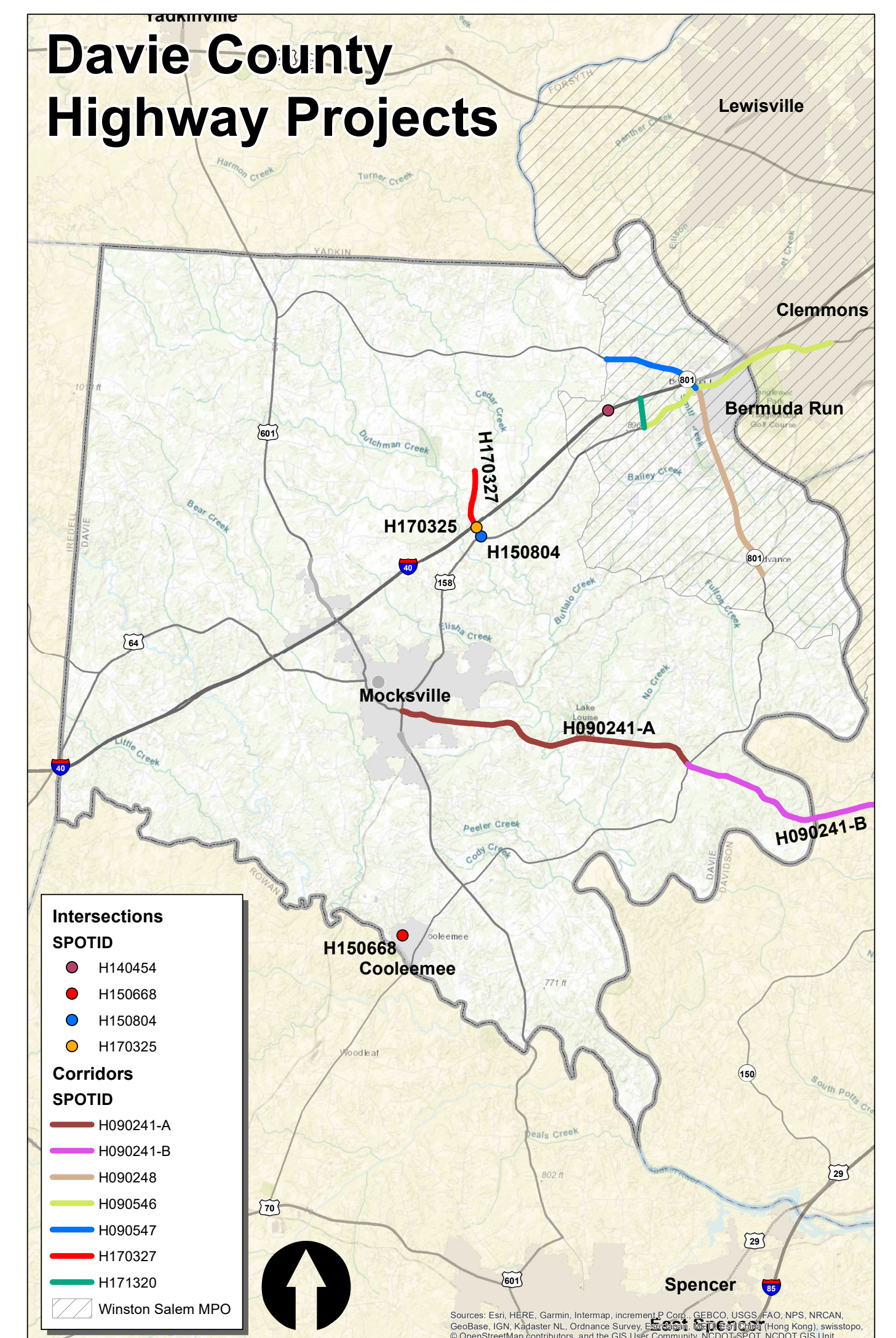
2020-2029 STIP (State Transportation Improvement Projects) will bring close to \$400M in highway and pedestrian improvement projects.

Davie County has nearly 17 miles of existing sidewalk.



Over 30,000 vehicles travel along I-40 every day in Davie County.

- Tractor trailers make up roughly 12% of that traffic.



GOALS

1. Continue to support regional efforts to create a connected multimodal network.
2. Continue activities that support the development of complete streets, and mobility options for all users on the existing road network.
3. Utilize context sensitive design for highly visible infrastructure.
4. Ensure new industrial development has safe and reliable access to major highways.
5. Promote Safe Routes to School.
6. Identify Locations for future park and ride lots Along I-40, US 158 and US 601.
7. Explore additional revenue options for funding transportation improvement and planning.

COMMENTS

What else would you like to see?

LAND USE & COMMUNITY APPEARANCE

Davie County Growth Projections

DAVIE COUNTY TOTAL	Base Year (2016)	Horizon Year (2050)	Change
Population	42,211	64,135	21,924
Dwelling Units	15,888	24,140	8,252
Single-Family	12,087	18,829	6,742
Multi-Family	793	1,207	414
Mobile Homes	3,008	4,104	1,095
Employment	18,498	27,736	9,238
Retail/Office	6,969	12,949	5,980
Industrial	6,149	7,553	1,404
Institutional	5,380	7,234	1,854

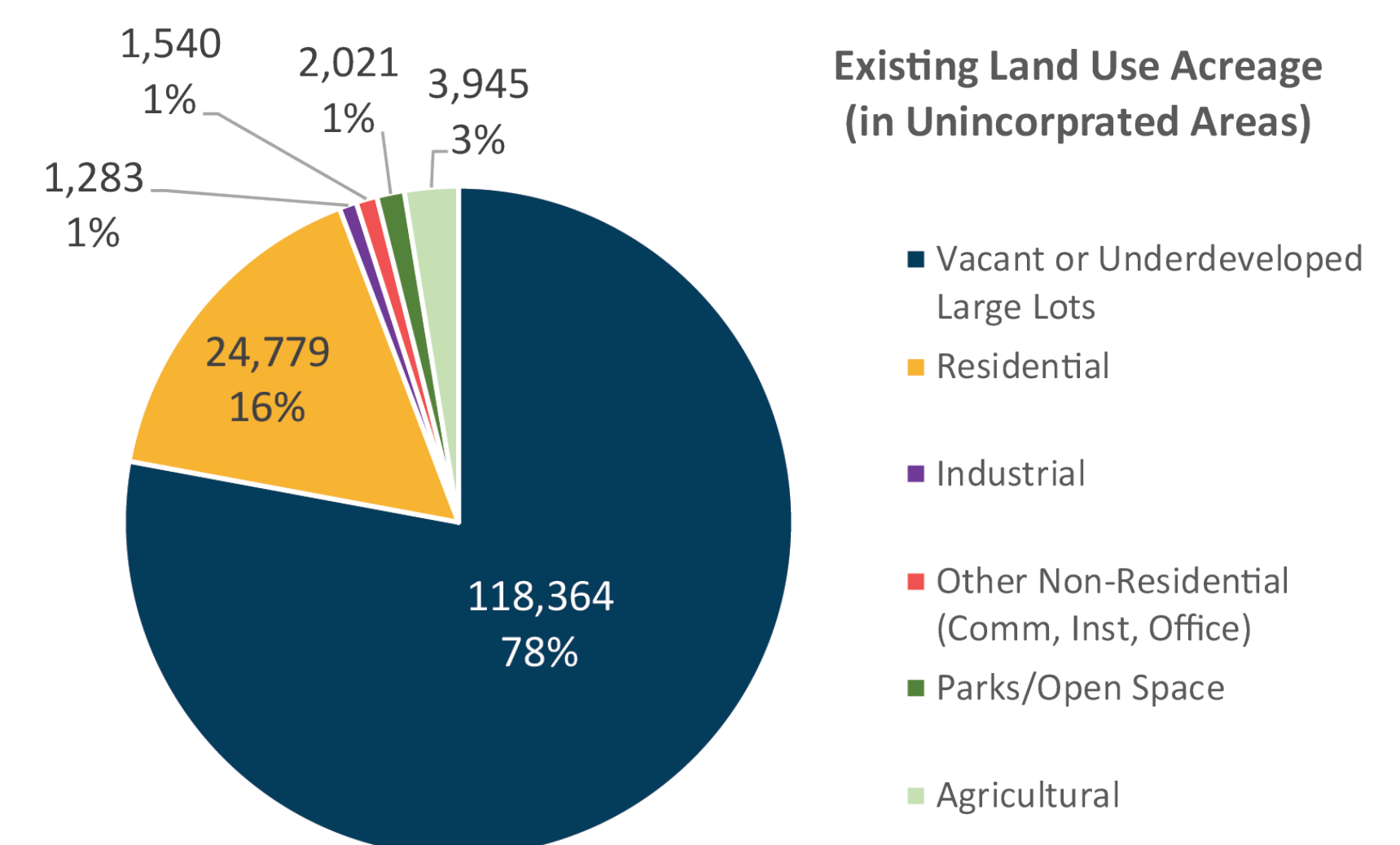
Source: PTRC based on state data; Woods & Poole (US BEA)

Growth projections for Davie County show the population will increase 52% by 2050.

• Davie County population is estimated to increase by 21,924 people.

Vacant and underdeveloped land make up the largest land use category.

- The majority of this land is zoned R-A (83.7%).
- R-20 accounts for 15.5% and only 0.5% is zoned Industrial.



GOALS

1. Preserve the rural character of Davie County.
2. Maintain a diverse industrial base as an integral part of Davie County's future growth and development.
3. Maintain compatibility between land uses.
4. Ensure quality commercial, office and institutional development.
5. Promote mixed use development to encourage proximity of housing to employment and reduce work trip travel time.
6. Increase infill development by incentivizing reuse of existing vacant or underutilized buildings and properties.
7. Decrease development impact to environmentally sensitive areas.

COMMENTS

What else would you like to see?

QUALITY OF LIFE

Davie County has 10 publicly accessible parks and open spaces and 9 recreation and community centers.

- The Recreation and Parks department anticipates the Davie County Community Park to be completed by Spring 2020.
- Davie county has 156 acres of county and municipal park land.
- According to GIS Data, Davie has 1,553 acres of gamelands.

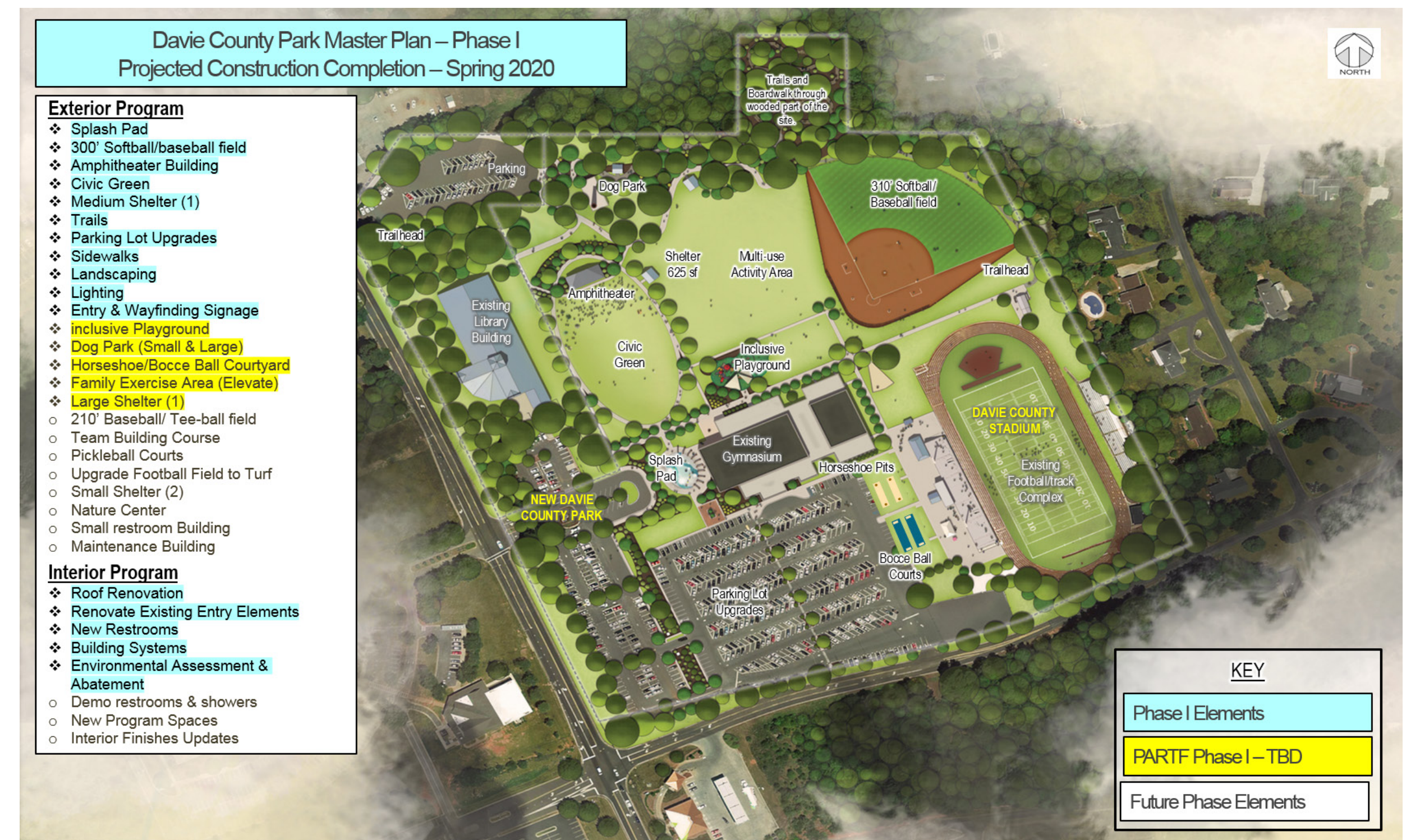
Farmington Nature Park is the newest addition to community centers in Davie County.

- It received a \$65,000 grant to add additional trails and bike pump tracks.

BB&T Sports Park, a world class athletic facility, hosted over 100,000 visitors for events in 2018.

Davie County is home to 5 wineries.

- Davie County is a vibrant partner of the Yadkin Valley Wine Country.
- Misty Creek Vineyards is a participant of the Shallow Ford Wine Trail.



GOALS

1. Implement greenway and trail development to connect key destinations in Davie County.
2. Develop countywide comprehensive bicycle and pedestrian plan.
3. Preserve open space and natural resources.
4. Incorporate more public art into Parks and Recreation programming as well as the physical and usable environment.

COMMENTS