

Overview Presentation



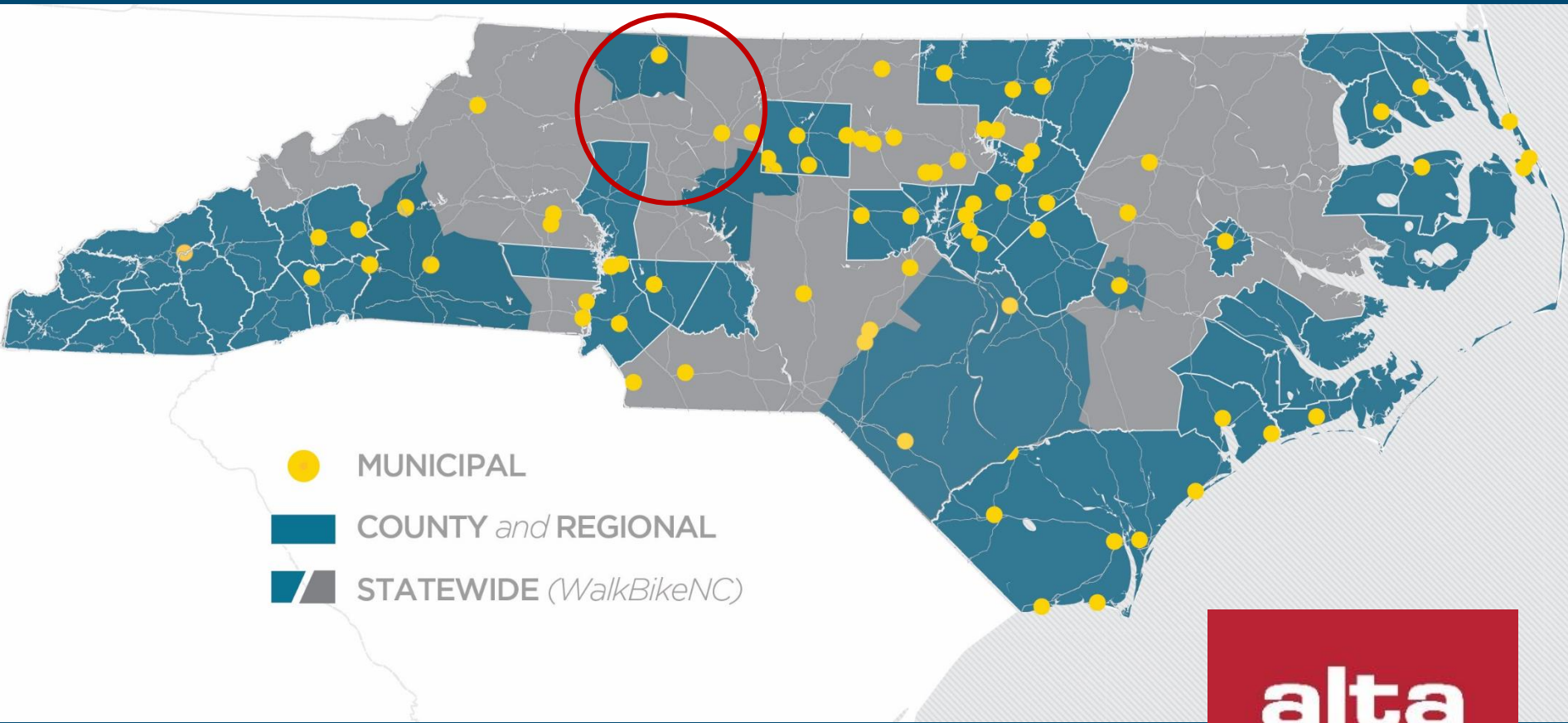
Agenda

1. Overview PPT
2. Vision & Goals
3. Next Steps
4. Map Mark-Up





ALTA PLANNING + DESIGN *in* NORTH CAROLINA



- MUNICIPAL
- COUNTY *and* REGIONAL
- STATEWIDE (*WalkBikeNC*)



A Bicycle System for All Ages & Abilities



“... DOT encourages transportation agencies to *go beyond the minimum requirements*, and proactively provide convenient, safe, and context-sensitive facilities that foster increased use by bicyclists and pedestrians of *all ages and abilities...*” - FHWA Policy Statement (2010)



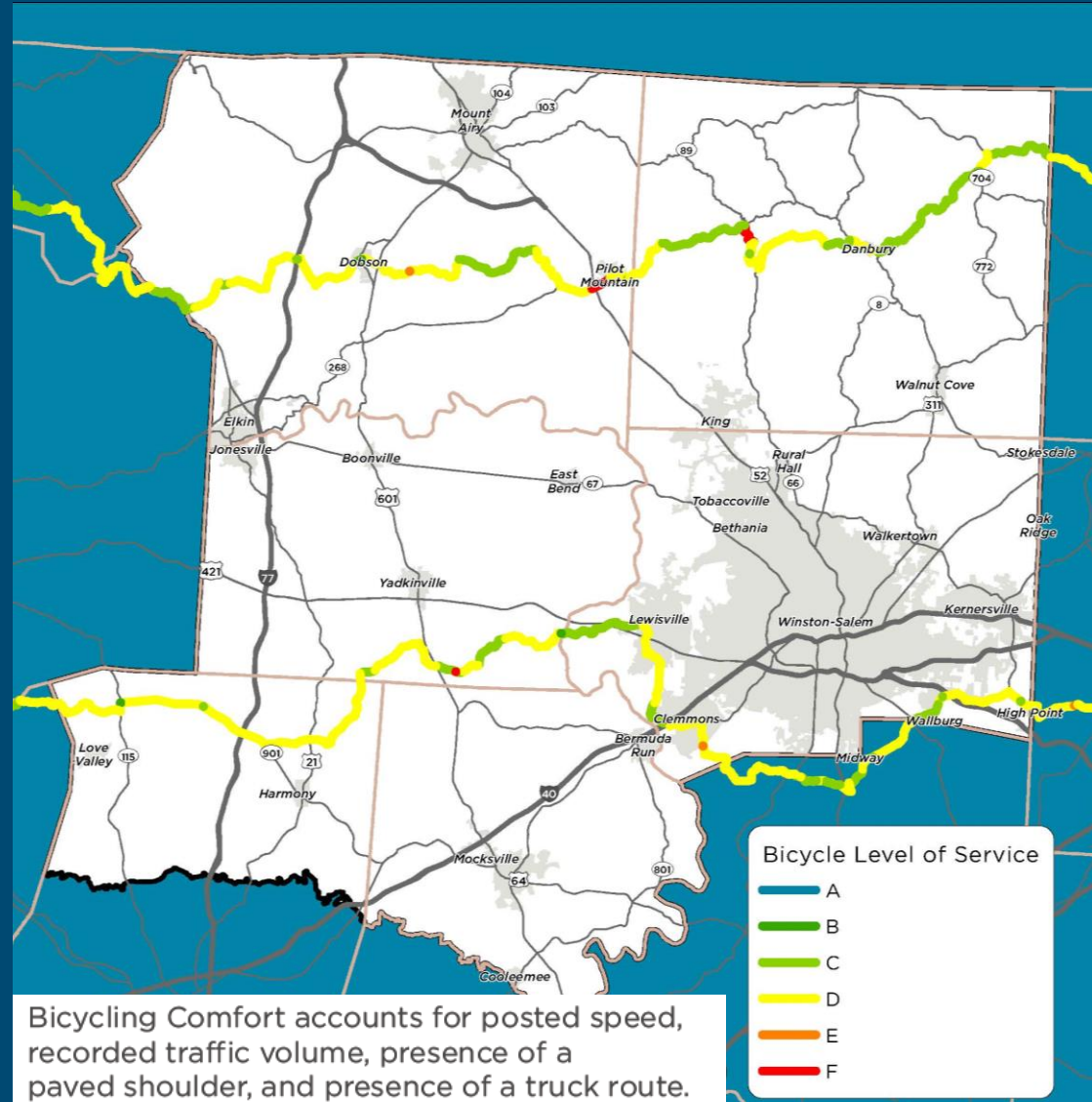


CHAPTER 1: INTRO & BENEFITS

- Transportation: Connectivity, Accessibility & Equity
- Safety
- Recreation & Health
- Economic Development
- Regional Tourism

CHAPTER 2: EXISTING CONDITIONS

- GIS data and mapping
 - Bicycle Level of Service Analysis
- Review of development regulations
- Remote analysis & fieldwork
- Review of existing plans & programs

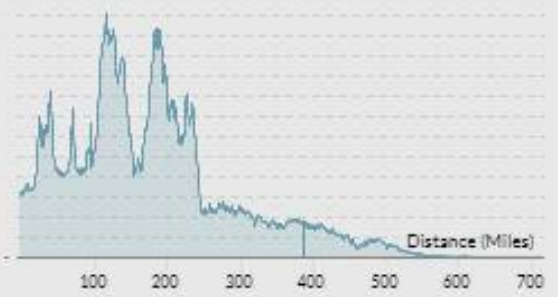


State Bike Route 2: Mountain to Sea

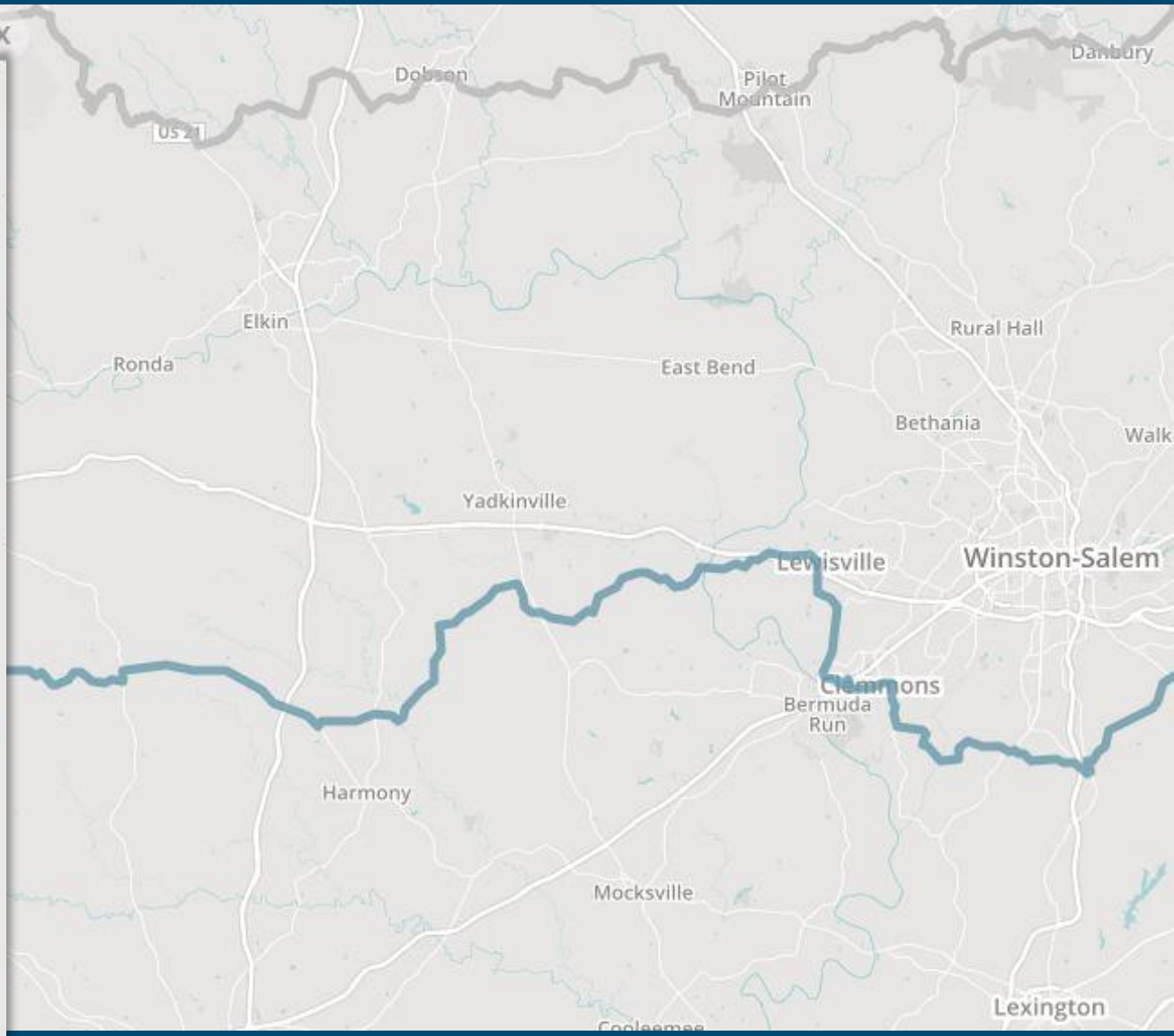
2

MOUNTAINS TO SEA

DISTANCE: 700 Miles
DIFFICULTY: Moderate
ELEVATION

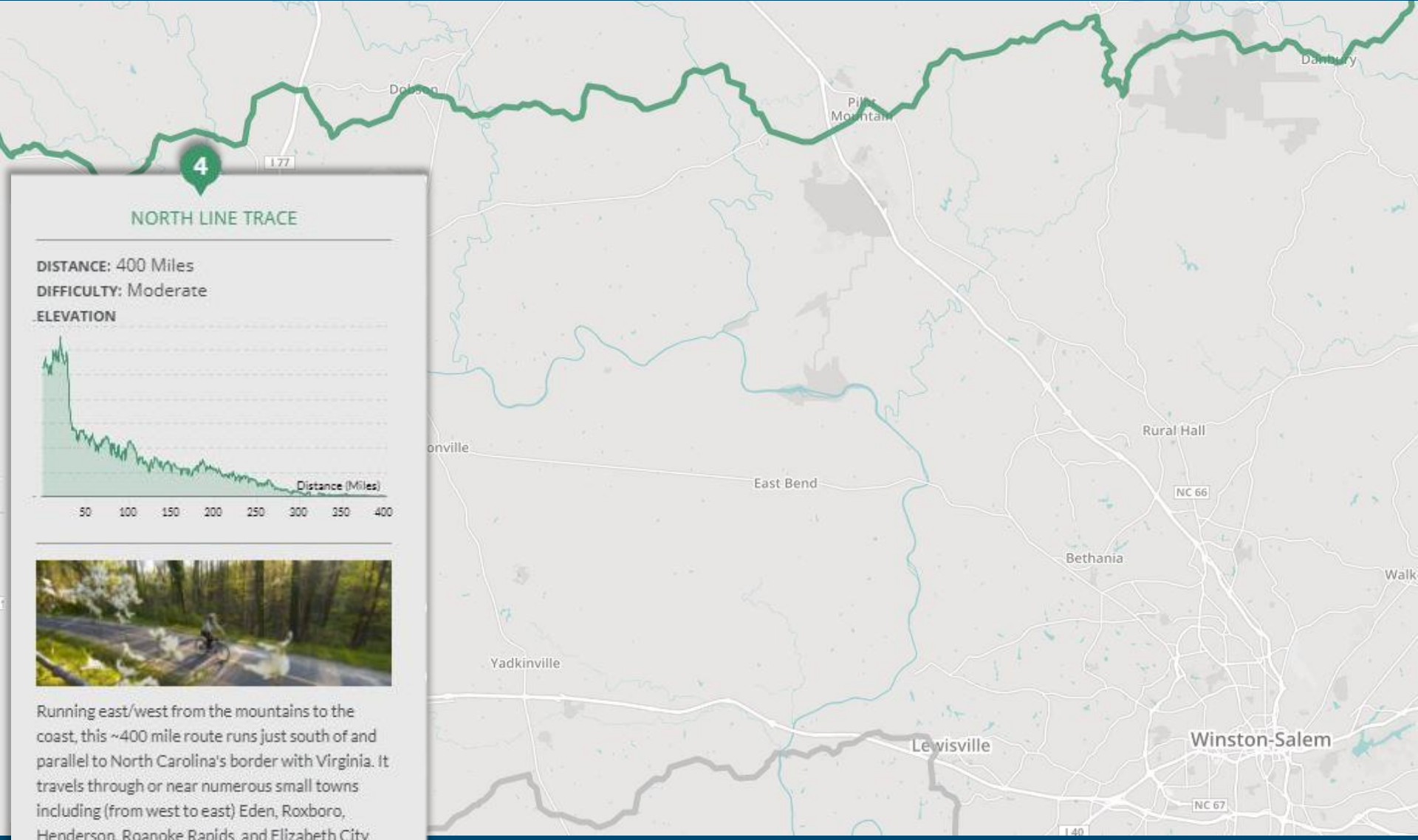


The 700+ mile NC 2 Mountains to Sea route serves as the main artery of the North Carolina bicycle route system, bisecting the state west to east. It connects many of North Carolina's larger cities. The route begins in Murphy in the mountainous southwest and finishes in Manteo at the Outer Banks in the east.





State Bike Route 4: North Line Trace



4

NORTH LINE TRACE

DISTANCE: 400 Miles

DIFFICULTY: Moderate

ELEVATION



Running east/west from the mountains to the coast, this ~400 mile route runs just south of and parallel to North Carolina's border with Virginia. It travels through or near numerous small towns including (from west to east) Eden, Roxboro, Henderson, Roanoke Rapids, and Elizabeth City.

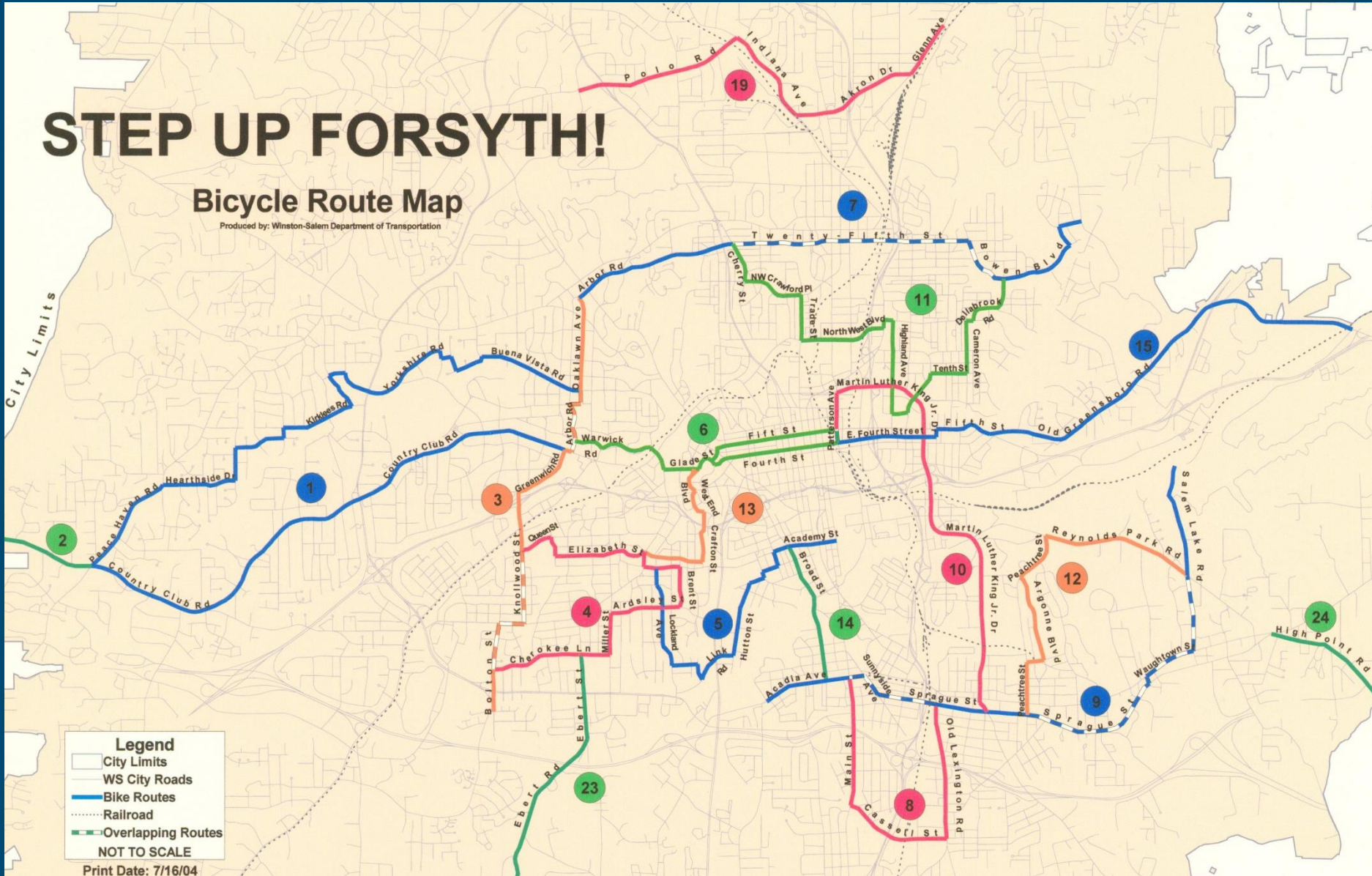
FORSYTH COUNTY BIKE ROUTES



STEP UP FORSYTH!

Bicycle Route Map

Produced by: Winston-Salem Department of Transportation



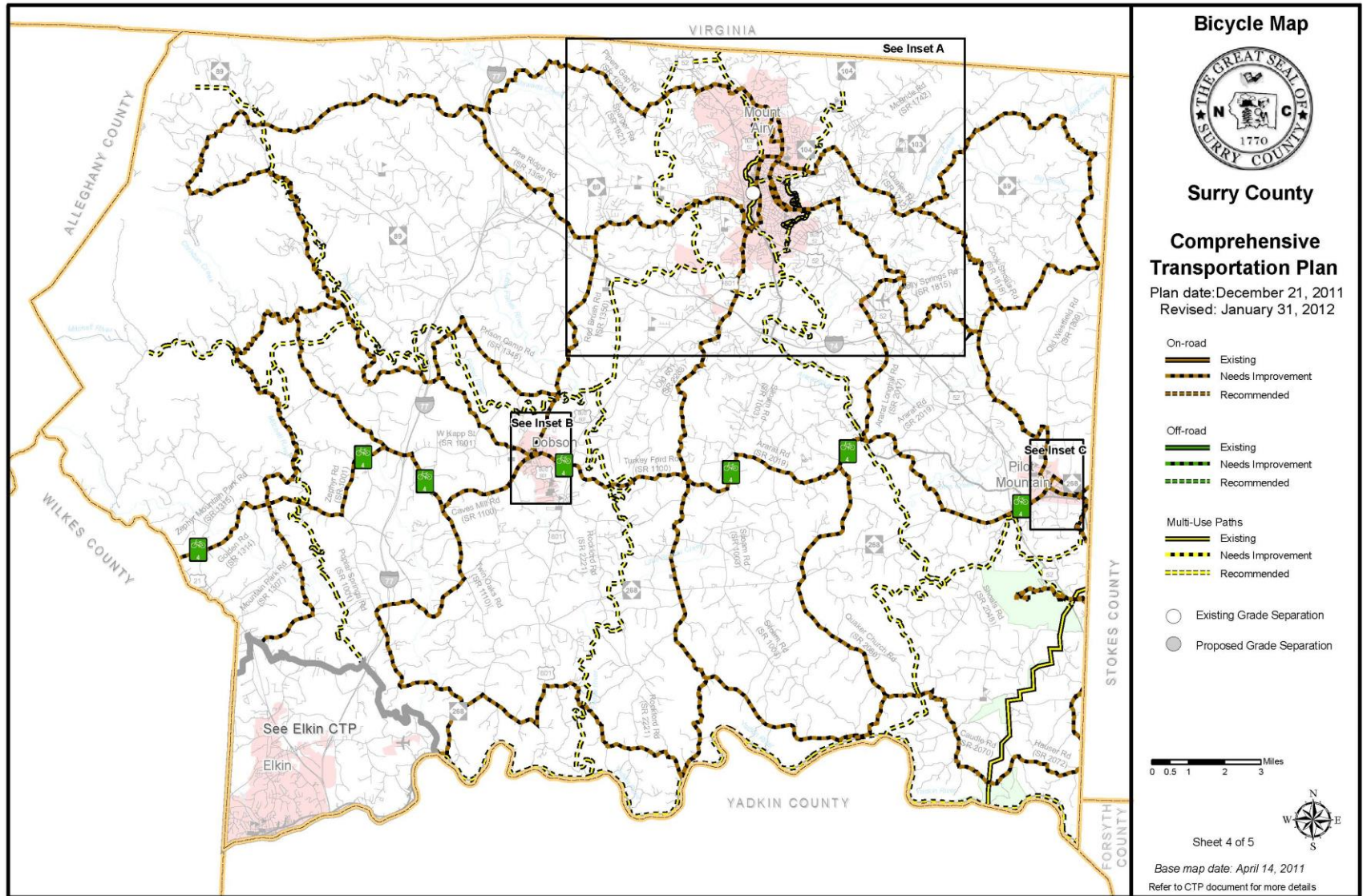
Legend

- City Limits
- WS City Roads
- Bike Routes
- Railroad
- Overlapping Routes

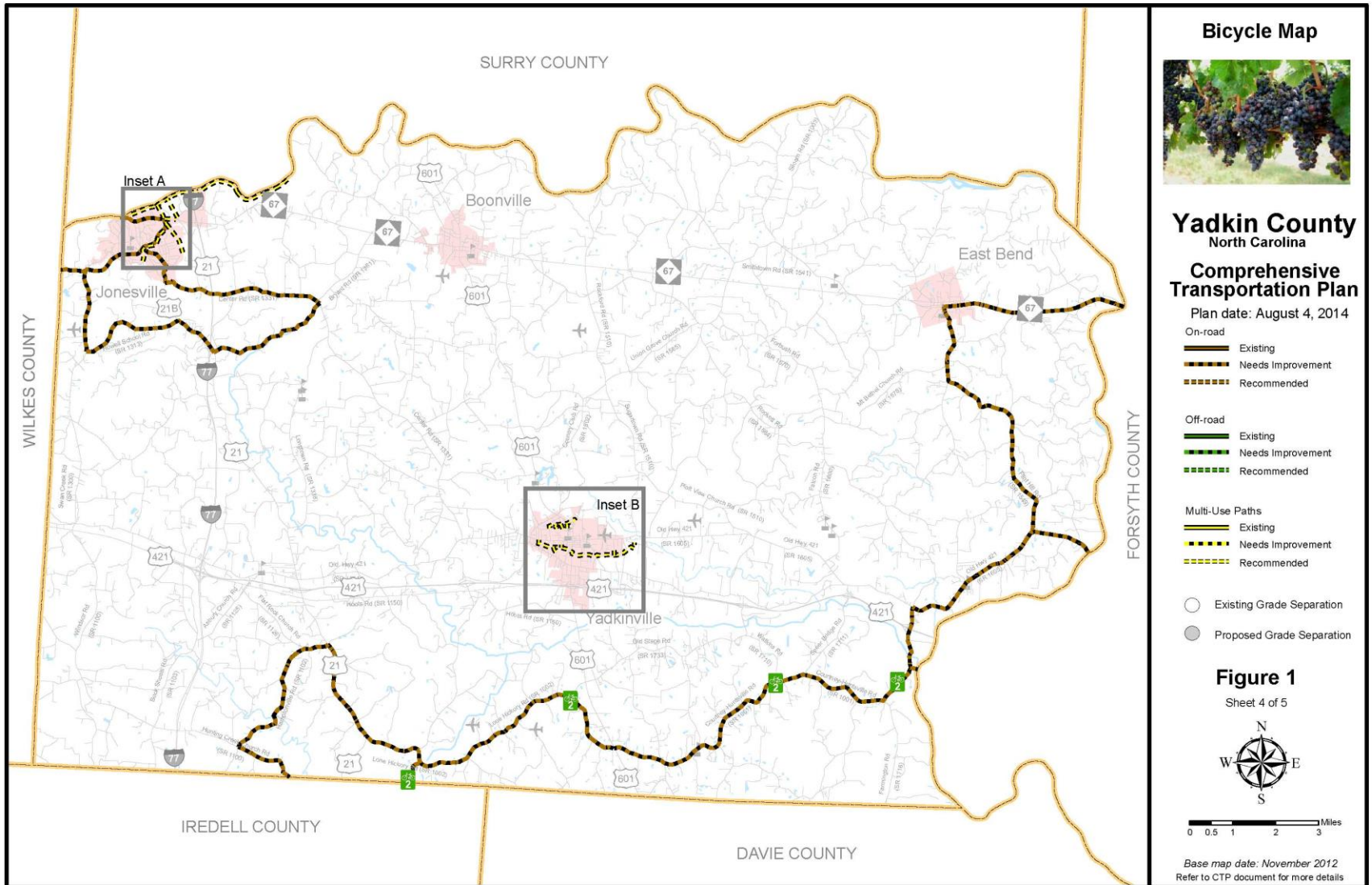
NOT TO SCALE

Print Date: 7/16/04

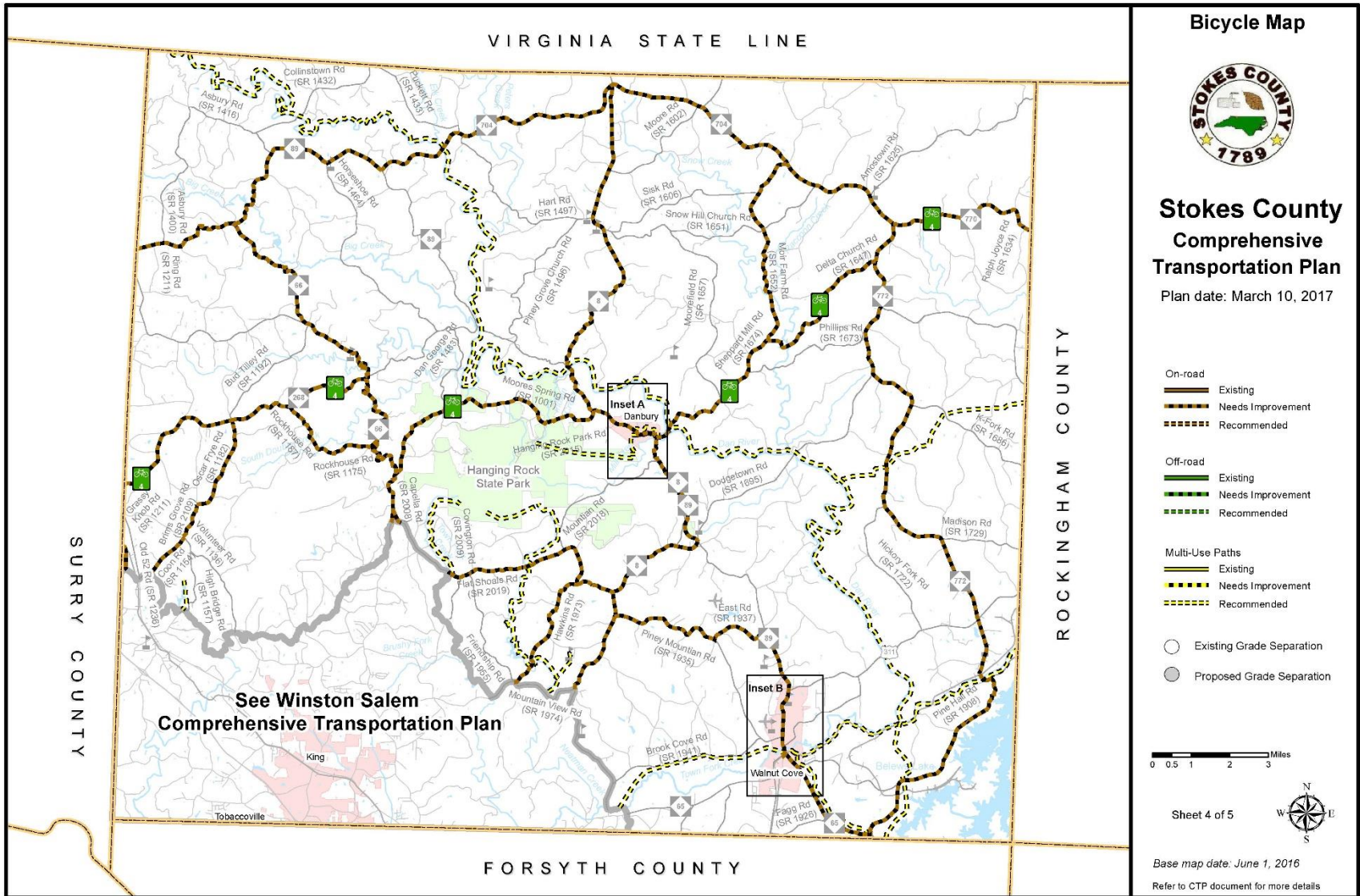
COMPREHENSIVE TRANSPORTATION PLANS



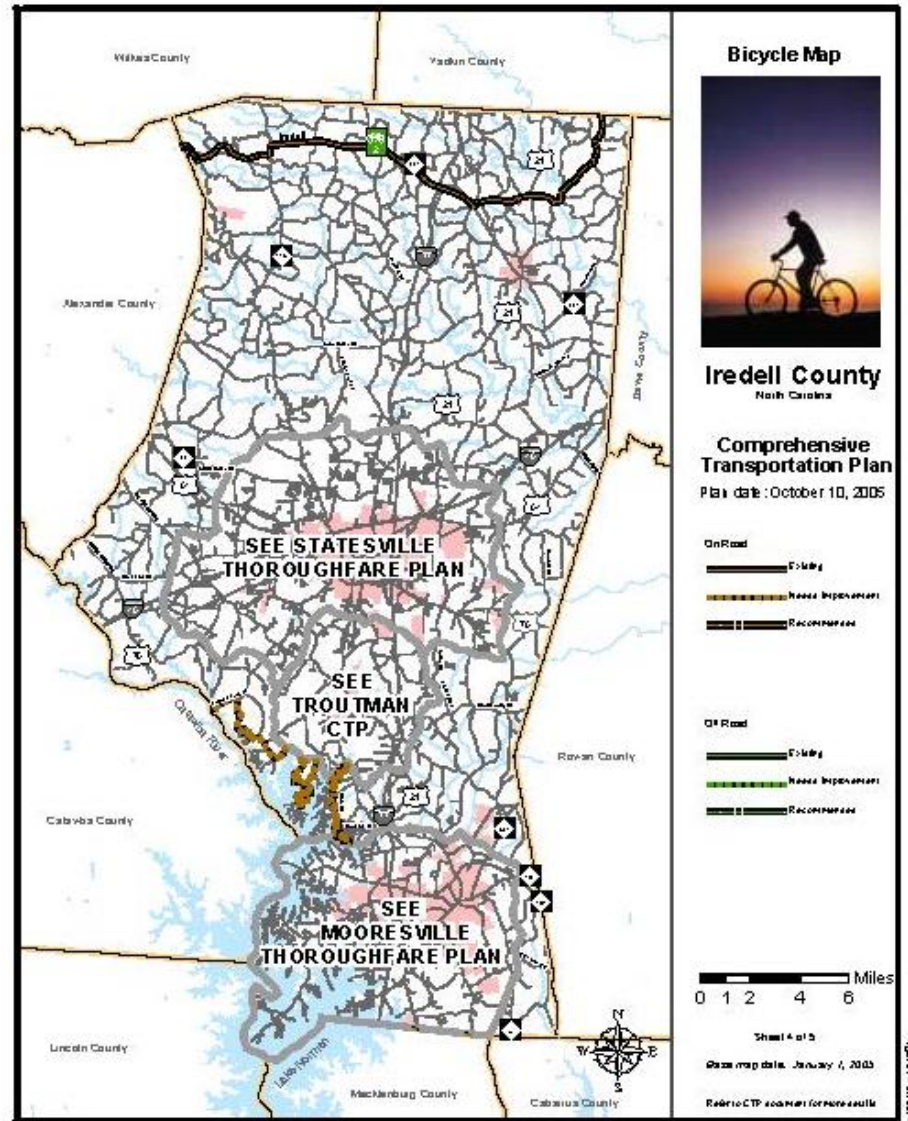
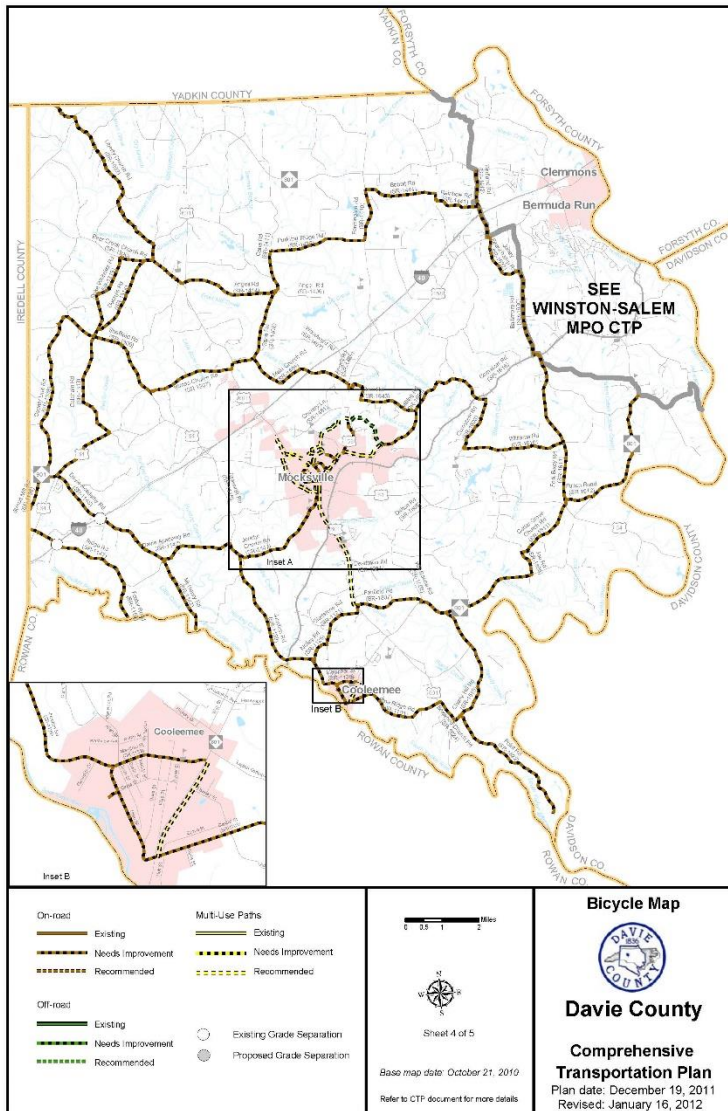
COMPREHENSIVE TRANSPORTATION PLANS



COMPREHENSIVE TRANSPORTATION PLANS



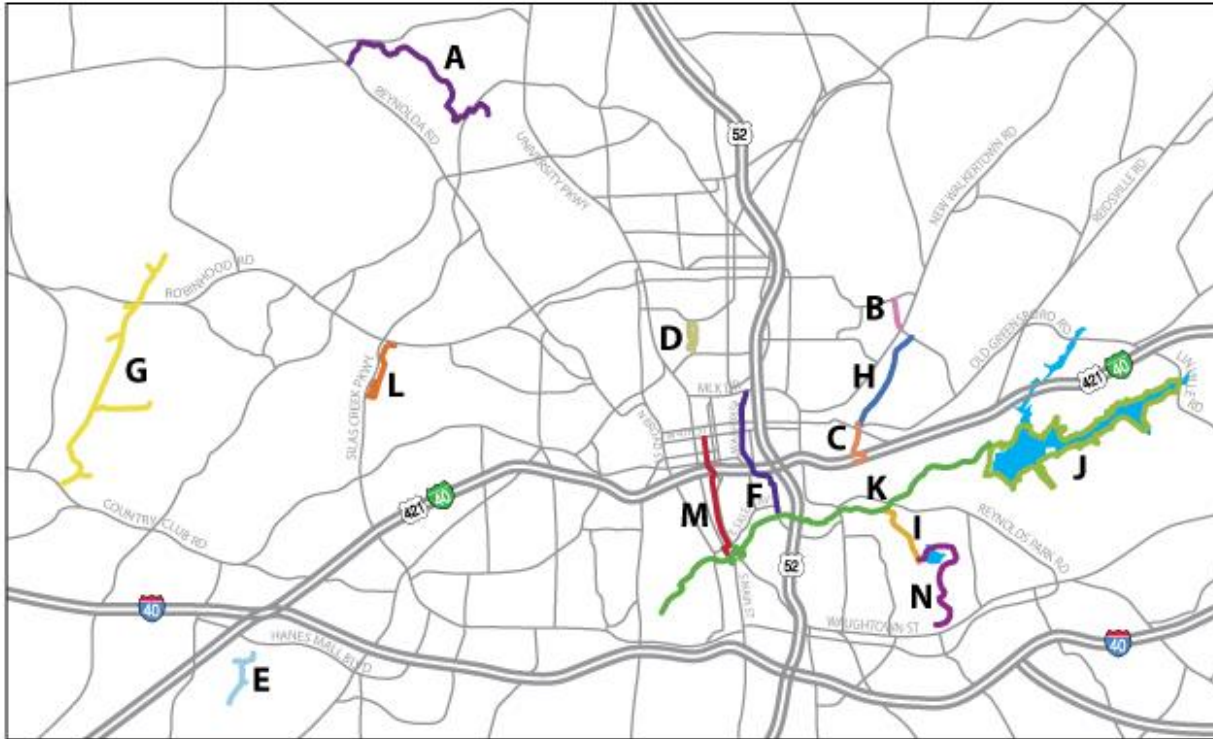
COMPREHENSIVE TRANSPORTATION PLANS



COMPREHENSIVE TRANSPORTATION PLANS

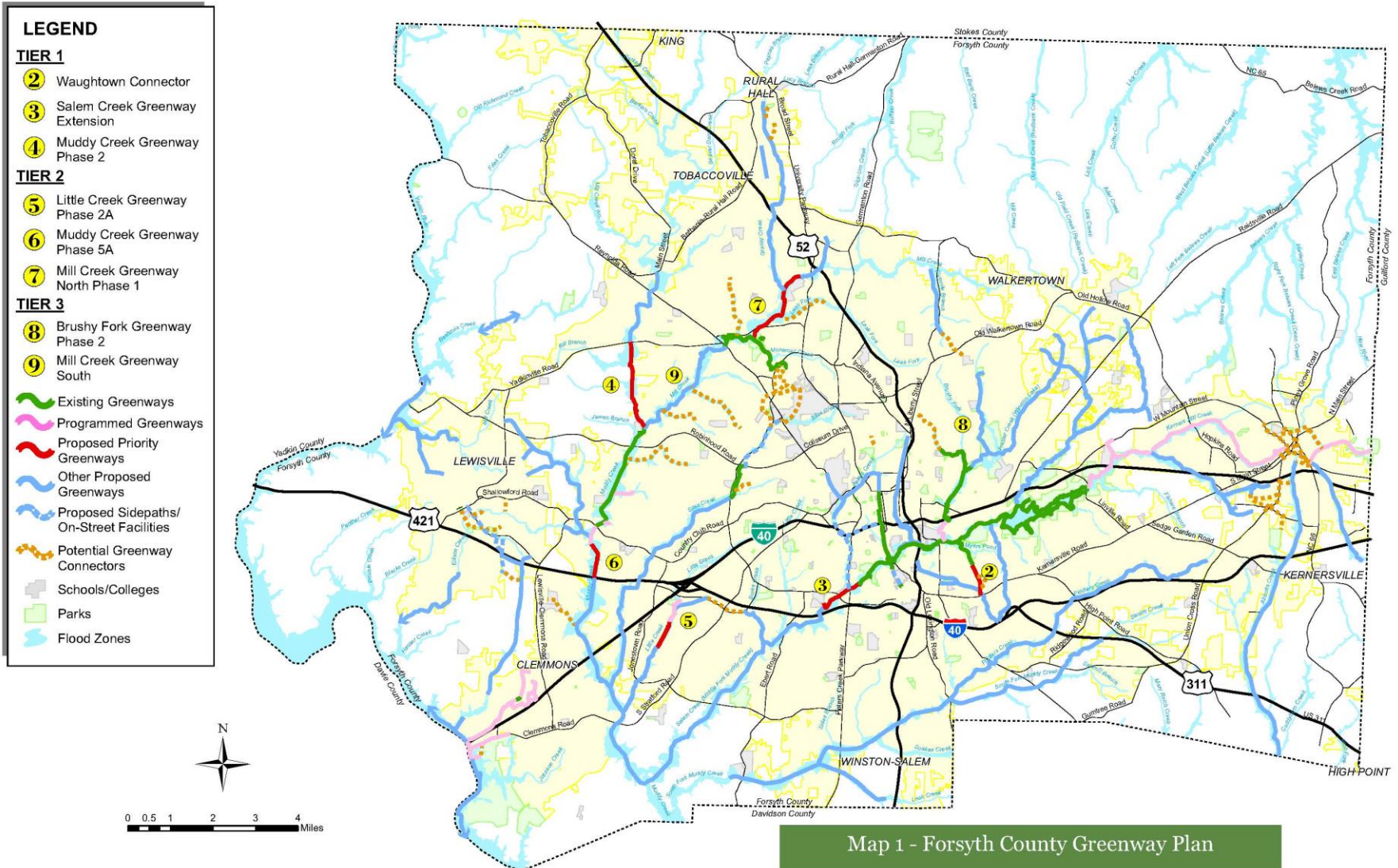


WINSTON-SALEM GREENWAYS



- A. Bethabara Greenway
- B. Bowen Branch Greenway
- C. Brushy Fork Greenway
- D. Gateway Commons Greenway
- E. Little Creek Greenway
- F. Long Branch Trail
- G. Muddy Creek Greenway
- H. Newell/Massey Greenway
- I. Peachtree Greenway
- J. Salem Lake Trail
- K. Salem Creek Greenway
- L. Silas Creek Greenway
- M. Strollway
- N. Waughtown Connector

WINSTON-SALEM GREENWAY PLAN



...and the list goes on!

- See poster for details
- **Please add plans & upcoming projects that we missed**

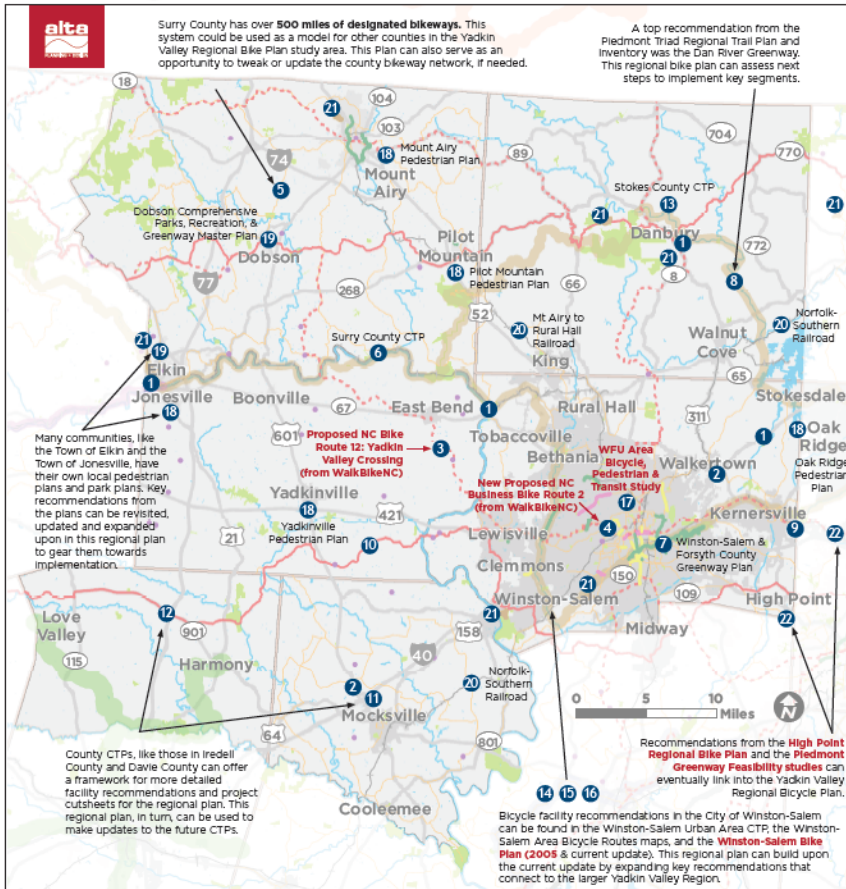


DRAFT - MAY 2019



EXISTING PLANS SUMMARY

This draft map can be used to consider the many existing bicycle and greenway plans that can be stitched together by the new Yadkin Valley Regional Bicycle Plan. The numbered labels below correspond to the summary table on the following page. Projects/plans in red were completed by Alta.



The study area boundary through Iredell County was not yet determined when this map was created.

KNOW OF A PLAN THAT IS NOT LISTED? PLEASE ADD IT TO THIS BOARD WITH POST-IT NOTE.

MAP ID	EXISTING PLAN/RESOURCES	KEY PROJECTS/RECOMMENDATIONS RELATED TO THE YADKIN VALLEY REGIONAL BICYCLE PLAN
1	NC DOT 2018-2027 STIP Bridge Projects	Multiple bridge replacement projects; confirm projects will accommodate bicyclists. For example: Yadkin River near East Bend (B-5825); Dan River in Danbury (B-5766); Elkin Creek in Elkin (B-5971).
2	NC DOT 2018-2027 STIP Division 3 Regional Highway Projects	Potential opportunities to incorporate paved shoulders or bicycle lanes. For example: US 158 , connecting Winston-Salem, Walkertown, and Stokesdale; US 601 in north Mocksville (R-5736); and NC 66 in Walkertown (J-5824). The last two examples have planning and design in progress.
3	WalkBikeNC (NC Statewide Bicycle & Pedestrian Plan)	New Proposed NC Bike Route 12 (Yadkin Valley Crossing): This proposed addition to the State Bike Route system is detailed in WalkBikeNC, connecting from Stone Mountain in the west to Winston-Salem in the east (via Dobson, Booneville, and Lewisville).
4	WalkBikeNC (NC Statewide Bicycle & Pedestrian Plan)	New Proposed NC Business Bike Route 2: This route would go through Winston-Salem, High Point, and Greensboro to complement the existing rural route through the region. Suggested route draws upon input from local bicyclists and bicycle shop owners.
5	Surry County Scenic Bikeways	Surry has over 500 miles of designated bikeways that provide access to each community in the County, and attractions such as parks and vineyards. The routes provide challenges for all levels of cyclists, running through the County's most scenic areas. This system could be used as a model for other counties in the Yadkin Valley Regional Bicycle Plan study area. This Plan can also serve as an opportunity to tweak or update the county bikeway network, if needed.
6	Surry County CTP	This 2012 CTP features a well-distributed network of both on-road improvements and multi-use paths, including a greenway trail along the north side of the Yadkin River . Many of the routes identified align with other initiatives, such as the Surry County Scenic Bikeways and the Surry County Greenway Plan (2005) .
7	Winston-Salem & Forsyth County Greenway Plan	The Greenway Plan Update, adopted in 2012, continues the efforts started in the original 2002 plan by expanding the recommendations and prioritizing the greenway network. Top priorities included portions of the Wauhtown Connector, Salem Creek Greenway, and Muddy Creek Greenway .
8	Piedmont Triad Regional Trail Plan and Inventory	This 2011 plan includes an inventory of existing & proposed trails, and identification of new proposed regional trail connections throughout the Piedmont Triad, including nearly the entire study area for this Yadkin Valley Regional Bicycle Plan, with the exception of the portion in Iredell County. The largest priority trail from this plan that falls within the study area is the Dan River Trail .
9	Piedmont Greenway-Triad Park Reedy Fork Section Feasibility Study	This 2018 study evaluates the three mile section of the Piedmont Trail that extends from downtown Kernersville to Triad Park. The proposed 3-mile alignment serves a large number of uses along the corridor, while providing the longest distance off-road (as compared to other alternatives).
10	Yadkin County CTP	This 2014 CTP recommends multi-use paths in Jonesville and Yadkinville, along with on-road sections in need of improvement along NC Bike Route 2 , and a short loop south of Jonesville.
11	Davie County CTP	This 2012 CTP recommends a small network of multi-use paths in Mocksville (including one recommended off road trail), with a larger network of on-road recommendations that surround Mocksville, identified as "needs improvement".
12	Iredell County CTP	This 2005 CTP only identifies the existing State Bike Route 2 on NC 901 in north Iredell County.
13	Stokes County CTP	This 2017 CTP recommends a multi-use path that runs across the County on the north side of the Dan River, with smaller connecting paths to Hanging Rock State Park and Walnut Cove. A network of on-road sections that need improvement are also identified, including the entirety of NC Bike Route 4 through the County.
14	Winston-Salem Urban Area CTP	This 2012 CTP identifies almost all roads that are not local or limited access as "needs improvement". A goal of this regional plan could be to narrow down these recommendations to target specific routes for improvement. The City of Winston-Salem's new 2018 bike plan (currently in draft stage) should go a long way towards addressing this as well.
15	Winston-Salem Area Bicycle Routes	This set of 11 bicycle route loops and connectors is over 12 years old, but may still be relevant to examine potential regional connections.
16	Winston-Salem Bike Plan (2005 & current update)	The City of Winston-Salem is in the process of creating a new bicycle master plan for the City. The goal of the plan is to help the City determine which bicycle facilities are the most critically needed to improve safety and connectivity, as well as promote active transportation for all abilities.
17	Wake Forest University Area Bicycle, Pedestrian & Transit Study	This 2015 study focuses on connections between the Reynolda Campus and the surrounding areas, including bicycle infrastructure recommendations to connect towards Downtown Winston-Salem. Additionally, the 2014 Wake Forest University Bicycle & Pedestrian Infrastructure Study identifies a prioritized set of recommendations to improve conditions for walking and bicycling campus-wide.
18	Local Pedestrian Plans	Although pedestrian-focused, the pedestrian plans for the following municipalities feature recommendations for multi-use trails that should be incorporated into this regional planning process: Yadkinville (2010), Oak Ridge (2013), Mount Airy (2013), Jonesville (2015), and Pilot Mountain (2015).
19	Local Parks and Recreation Plans	Local park plans, such as the 2014 Town of Elkin Recreation, Parks & Greenway Plan and 2011 Town of Dobson Comprehensive Parks, Recreation, & Greenway Master Plan, should be reviewed for bicycle facility recommendations that can connect to a regional network. Examples include the proposed greenway connecting to schools and vineyards in Dobson, and the Big Elkin Creek Greenway and Yadkin River Greenway in Elkin.
20	Existing Rail Corridors	Rail-Trail opportunities should be explored along the limited amount of rail in the study area. This includes: Two short line connections from Elkin and Mount Airy to Rural Hall; and Norfolk-Southern connections in Stokes, Forsyth, and Davie counties.
21	Existing Mountain Bike Trails	There are at least a half dozen mountain bike trails in the Yadkin Valley region. These should be considered as destinations for the future regional bicycle system.
22	Regional Planning Connections	Many existing plans have bicycle facility recommendations that connect to the study area. These should be reviewed to coordinate recommendations. A few examples include State Bike Route recommendations from WalkBikeNC , the High Point Regional Bike Plan (2019) , the Piedmont Greenway Feasibility Study (2018) , the Central Park NC Regional Bike Plan (2013), and the Greensboro MPO BiPed Plan Update (2013).

Examples of Existing Bicycle Facilities:

Ararat Greenway



Salem Creek Greenway



E Salem Ave Bike Lanes



The Strollway



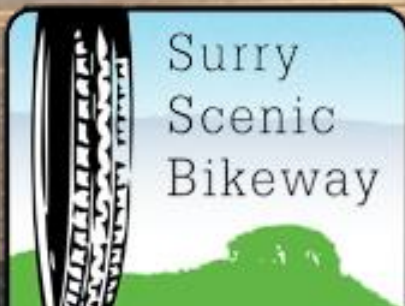
State Bike Route 4



Surry County Routes



SURRY SCENIC BIKEWAY



CAROLINA THREAD TRAIL



MOUNTAINS-TO-SEA TRAIL



REGIONAL NETWORK INPUTS

- Existing Plans
- Field Analysis
- Committee Input
- Public Input/Local Bike Club Routes
- Bicycle Level of Comfort
- State Bike Routes







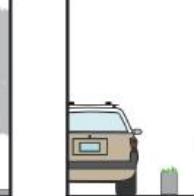
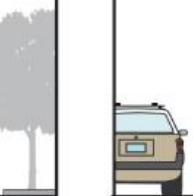


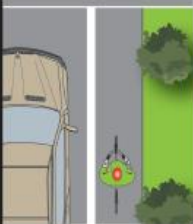














CHAPTER 3: REGIONAL BIKE NETWORK

- Overall Concept
- Short-term Priority Projects
- Long-term Vision Projects

CHAPTER 3: REGIONAL BIKE NETWORK

• Facility Selection

Shared Lanes*	Paved Shoulder	Bicycle Lane	Buffered Bicycle Lane	Separated Bicycle Lane	Shared Use Path: Sidepath	Shared Use Path: Greenway
 <p>Centerline or pavement marking placed 4' from curb</p>						
						
<p>Travel Lane 4' Side-Walk</p>	<p>Travel Lane 4'-7'</p>	<p>Travel Lane 5'-7' Side-Walk</p>	<p>Travel Lane 2' 5'-7' Side-Walk</p>	<p>Travel Lane 3' 5'-7' Side-Walk</p>	<p>Travel Lane 3-5' 10-12'</p>	<p>10-12'</p>
<p>*Uses a combination of signs, pavement markings, and speed and volume management measures to create safe bicycle travel.</p>						
						

Types of Recommendations



Provides continuity on lower-volume & designates preferred routes



Crash reductions observed up to 35%

Improves safety for all road users; can reduce "struck from behind crashes"



Crash reductions observed up to 74%

Provides continuity & increases awareness of bicyclists' presence



Crash reductions observed up to 60%

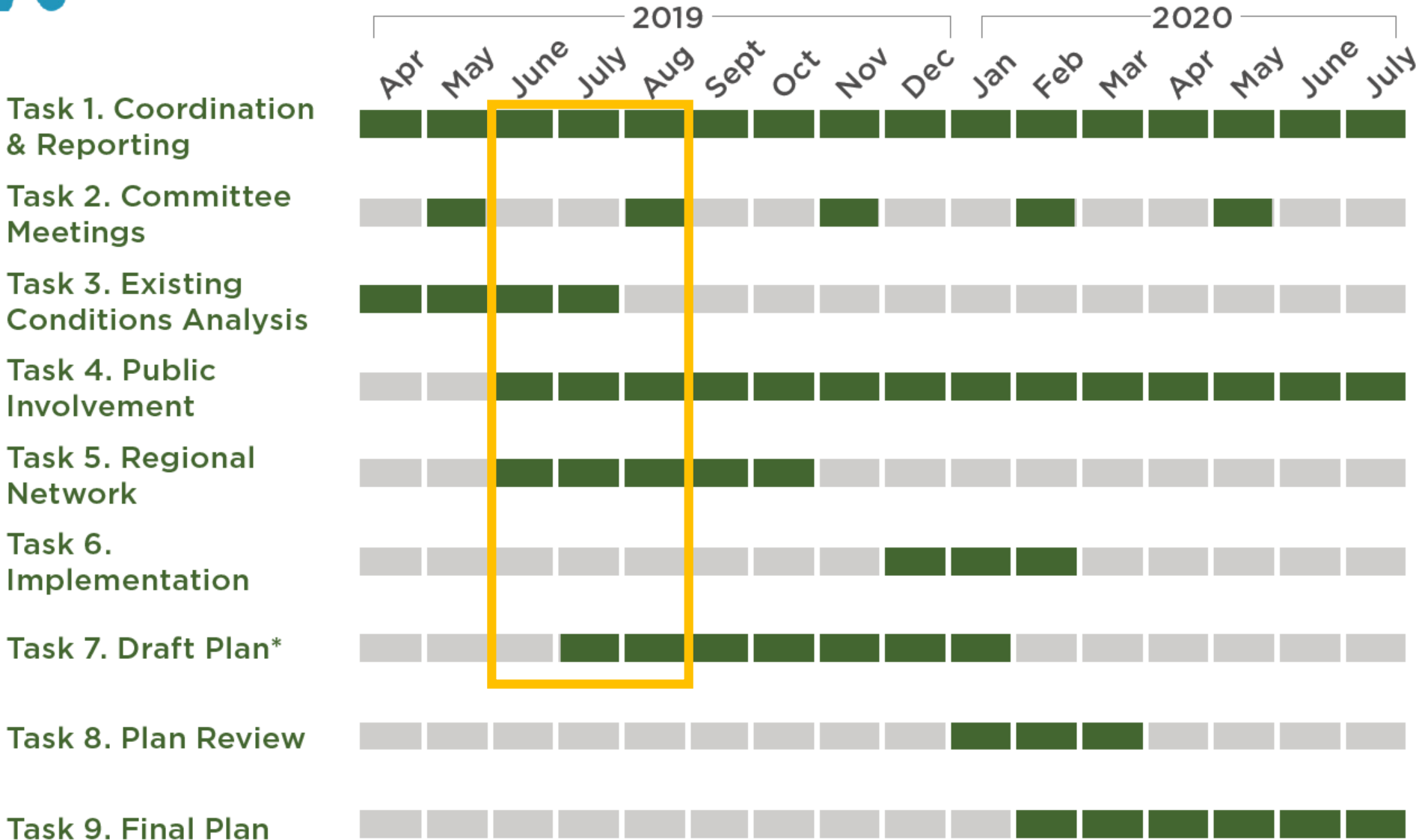


Additional Plan Components

(to be covered in future meetings)

- Overall Network Maps
- Priority Project Cut-sheets
- Bicycle-Related Policy Guidance
- Bicycle-Related Program Recommendations
- Implementation Strategies
- User-Friendly Bicycle Tourism Brochure Maps

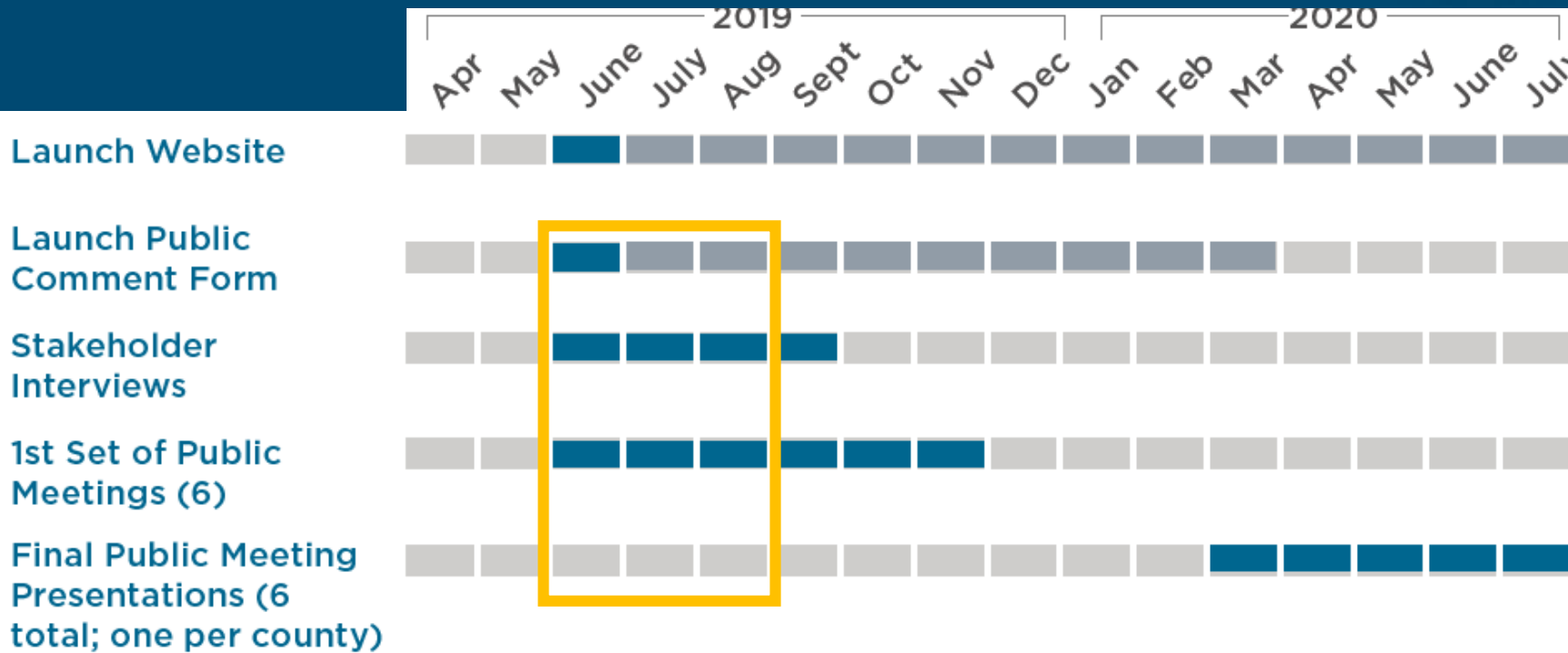
NEXT STEPS



NEXT STEPS: PUBLIC ENGAGEMENT



PUBLIC INVOLVEMENT





Committee
Questions/Comments:
Scope & Schedule



Vision & Goals Discussion

Focus Questions:

- What are the key steps needed to create a bicycle-friendly Yadkin Valley Region?
- What would you most like to get out of this plan?



Mapping Exercise

Please help us identify:

- Accuracy of draft base map
- Key destinations
- Additional existing facilities
- Bicycle facilities in-development (funded, in design, or under construction)
- Upcoming roadway projects with opportunity to add facilities
- Target areas and corridors for recommended improvements

Thank You!



Jason Reyes, AICP, Senior Planning Associate
984-329-5044 | jasonreyes@altaplanning.com

Matt Hayes, AICP, Principal
984-329-5006 | matthayes@altaplanning.com

