



NORTH CAROLINA

Department of Transportation



Davie, Surry & Yadkin Regional Comprehensive Transportation Plan (CTP) Meeting

June 18, 2019

AGENDA

Introductions

- Discuss, finalize and release G&O Survey to the public.
- Seek input onto Preliminary Vision Statement from Steering Committee
- Present Draft Base Year (BY) Traffic Analysis/Deficiencies (Volume/Capacity)
- Discuss Draft SE data analysis with the committee
- Consider if and how to include Stokes County as part of this Regional CTP

G&O Survey Discussion

<https://37729001-draft.metroquest.com/>

Goals and Objectives Survey

[WELCOME]

A Regional Comprehensive Transportation Plan

Thank you for providing much needed community input for the Northwest Piedmont Regional Comprehensive Transportation Plan for Davie, Surry, and Yadkin Counties.

 Begin



Comprehensive Transportation Plans drive the programming of State, federal, and local dollars.



2 [PRIORITY RANKING]

3 [STRATEGY RATING]

4 [MAP MARKERS]

5 [WRAP UP]



https://37729001-draft.metroquest.com/

2 Transportation Priorities

What to do Next Task

[WELCOME] [PRIORITY RANKING] [STRATEGY RATING] [MAP MARKERS] [WRAP UP]

Order your top 5 items above this line

- Safety Improvements
- New Roads and Locations
- Public Transportation
- Bicycle and Pedestrian
- Railroads
- Airports
- Highway Capacity
- Modernization

Tell us your top transportation priorities by placing the following planning issues in order.

Please drag 5 of the items above the line in your preferred order.

Suggest another

1 [WELCOME]

2 [PRIORITY RANKING]

3 [STRATEGY RATING]

4 [MAP MARKERS]

5 [WRAP UP]


Goal and Objective Ranking

[? What to do](#) [Next Task](#)

Highway

Bicycle and Pedestrian

Public Transit



Please rank these 5 highway strategies in order of importance for your community. 5 Stars = Most Important, 1 Star=Least Important

Safety
Safety of all road users should be considered above all benefits.

Commerce
Transportation enhancements should enhance access to commercial districts.

Freight
Improvements should strengthen manufacturer and distributor operations

Community
Improvements should emphasis traditional community design and a human scale

Conservation
Improvements should minimize impacts to conservation areas and open space.

★ ★ ★ ★ ★
Comment

★ ★ ★ ★ ★
Comment

★ ★ ★ ★ ★
Comment

★ ★ ★ ★ ★
Comment

[Suggest another](#)

[Next Category](#)

<https://37729001-draft.metroquest.com/>

1 [WELCOME]

2 [PRIORITY RANKING]

3 [STRATEGY RATING]

4 **Map It!**

5 [WRAP UP]

What to do Next Task

Please drag and drop at least 3 markers on the map.

- Safety Concern
- Traffic Problem
- Pedestrian Need
- Bicycle Need
- Transit Need
- Railroad Need

Map data ©2019 Google Terms of Use Report a map error

https://37729001-draft.metroquest.com/

5 Final Questions What to do

[WELCOME] [PRIORITY RANKING] [STRATEGY RATING] [MAP MARKERS] [WRAP UP]

Final Questions

What is your zip code?

What is your age?


Race

Ethnicity

Email address for plan updates (optional)

Thank you!

Thank you for your help! Your input is a key feature in creating a plan that best serves our communities.



NORTHWEST PIEDMONT
RURAL PLANNING ORGANIZATION

Preliminary Vision Statement Discussion!

Davie & Surry Counties Vision Statements (similar):

Enhance the connectivity of Surry County through the development of a transportation network which promotes and supports economic development compatible with the existing and future environmental and land use patterns. Provide safe, reliable, affordable, and convenient transportation choices to the residents of Surry County as well as public awareness of those choices. Develop a regional transportation network that improves Surry County residents' quality of life and surrounding environment.

Yadkin County Vision Statement:

To provide an efficient transportation system throughout Yadkin County without regards to jurisdictional boundaries to ensure continued and enhanced quality of life through safe and sufficient transportation.

Preliminary Vision Statement

Provide an efficient regional transportation system and enhance connectivity of Davie, Surry, and Yadkin Counties, through the development of a transportation network which promotes and supports economic development compatible with the existing and future land use patterns, as well as environmental considerations. Provide safe, reliable, affordable, and convenient transportation choices to the residents/non-residents of the region as well as public awareness of those choices. The regional transportation network should also improve quality of life and surrounding environment to residents of Davie, Surry and Yadkin Counties.

Draft
Base Year (BY) Traffic
Deficiencies
(Volume/Capacity)
Analysis

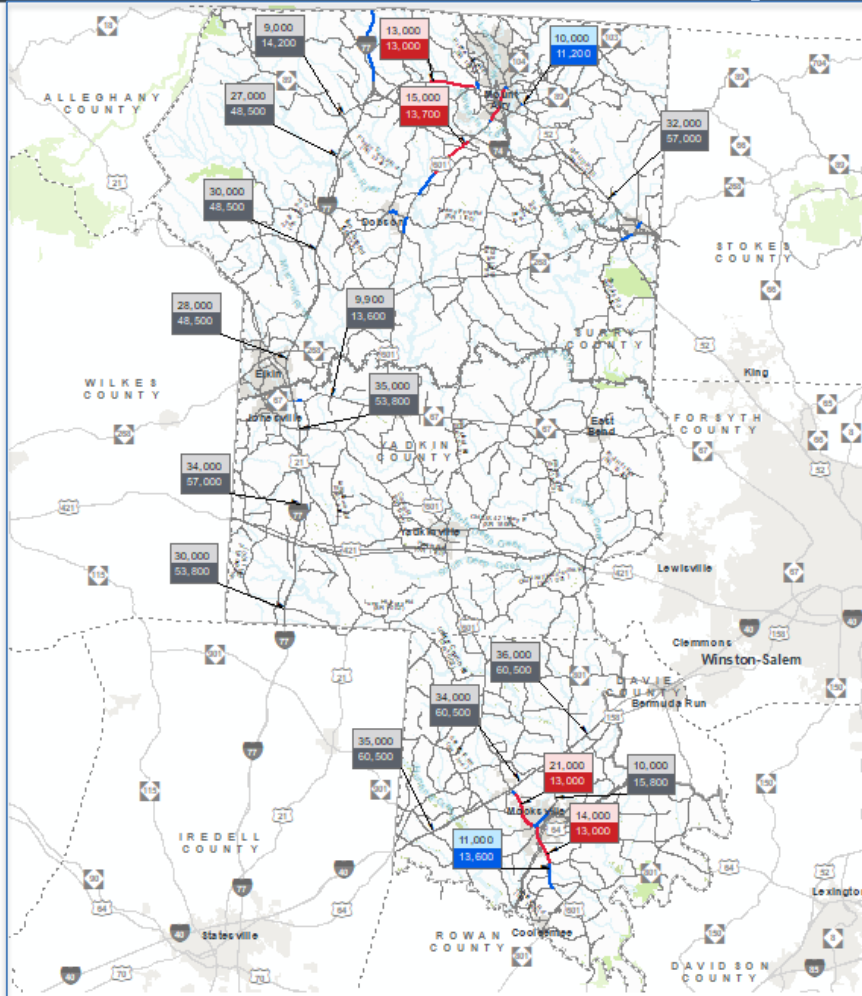



Figure 2
2017 VOLUME AND CAPACITY DEFICIENCIES


NW Piedmont RPO
(Davie, Surry & Yadkin Counties)

CTP Analysis and Information
DRAFT WORKING MAP
Plan Date: June 17, 2019

Volume and Capacity Ratio Features
(Base Year 2015)

- 2017 Volume / 2017 Capacity Under Capacity (0-0.79)
- 2017 Volume / 2017 Capacity Near Capacity (0.80-0.99)
- 2017 Volume / 2017 Capacity Over Capacity (1.00+)

Other Features
 Winston-Salem MPO

 Full report at: <http://ngisr.com/DCAC-CTP>

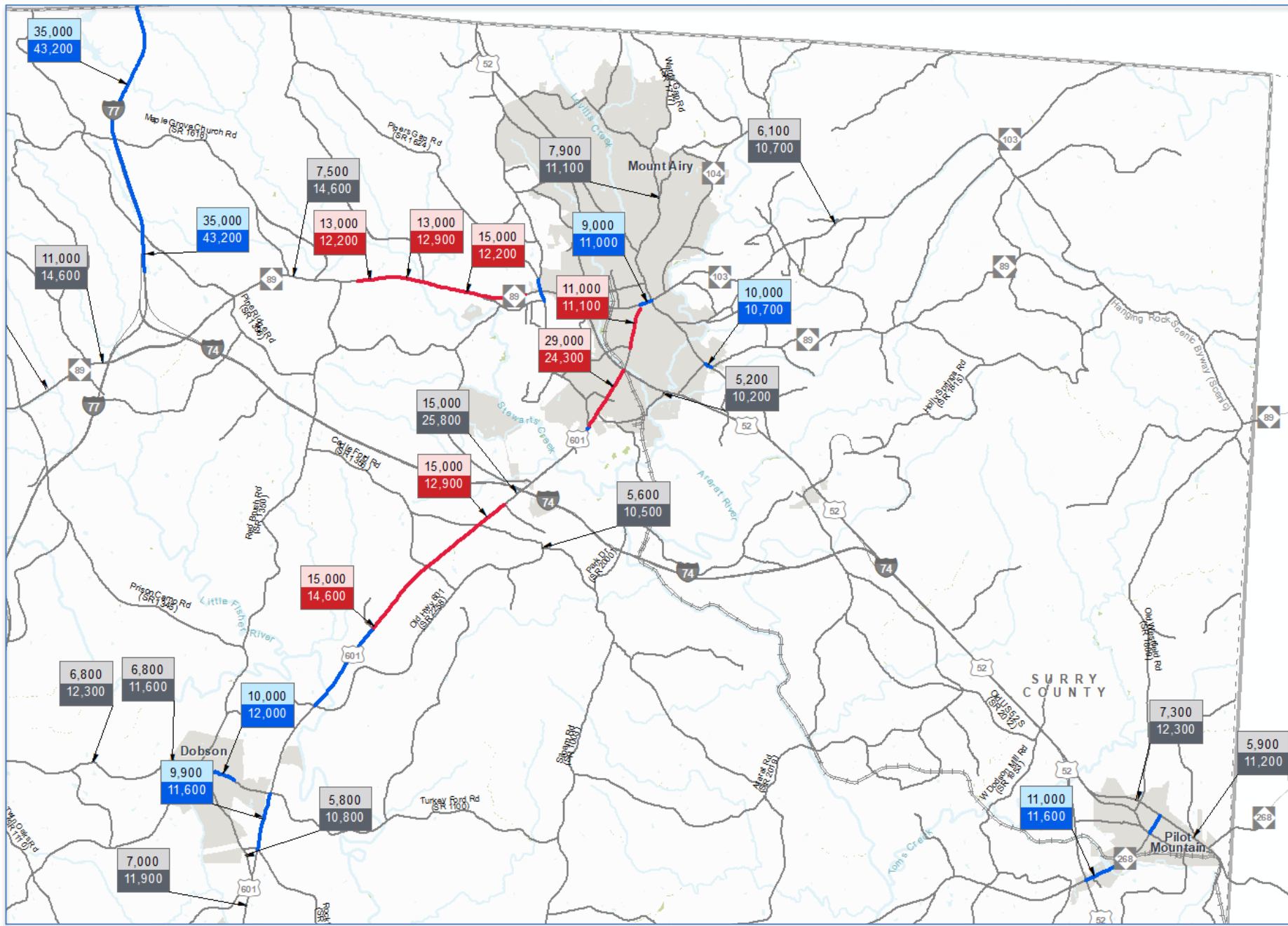
0.051
Miles

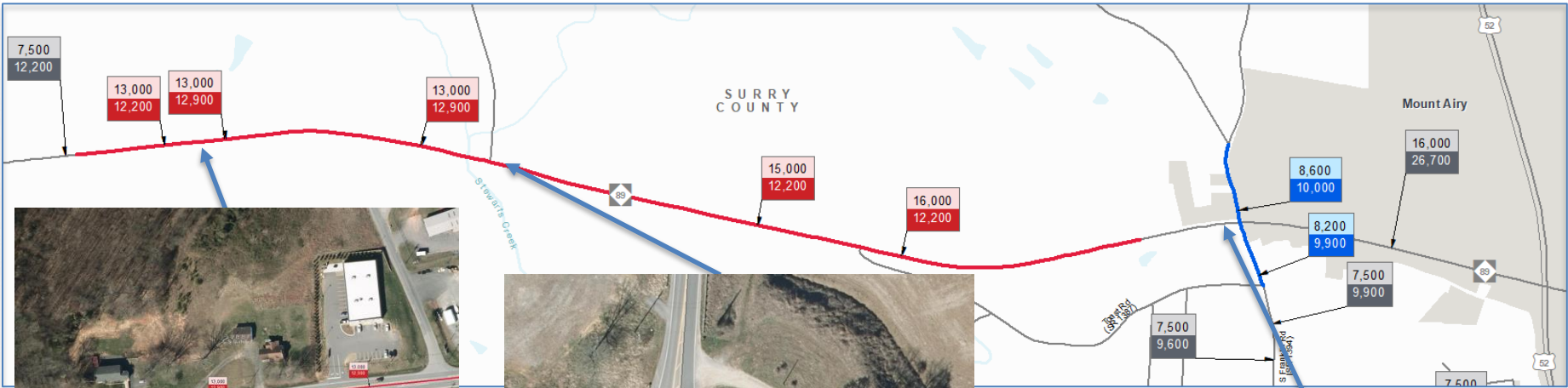
Sheet 1 of 2

Base map date: March 18, 2018

Legal Disclaimer
This product contains mapping data for informational and planning purposes only, and is subject to change. Users should review or consult the primary data sources to ascertain the usability of the information.

Volume/Capacity Analysis (Surry)





- 2-3 Lns, W of Sparger Rd
- Volume: 13,000 vpd
- Capacity 12,200 vpd
- Above capacity

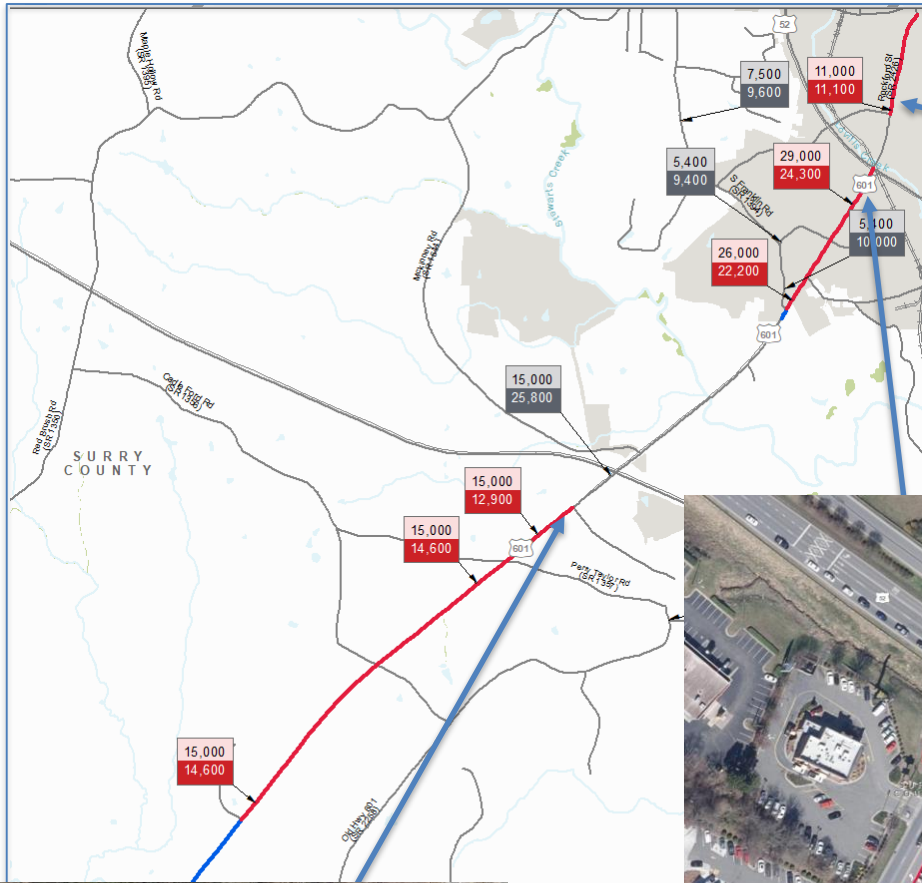


- 2-3 Lns, W of Franklin Rd
- Volume: 15,000 - 16,000 vpd
- Capacity 12,200 -12,900 vpd
- Above capacity



- 5 Lns E of Franklin Rd
- Volume: 16,000 vpd (vehicles per day)
- Capacity 26700 vpd
- Below capacity

US 601- Mount Airy



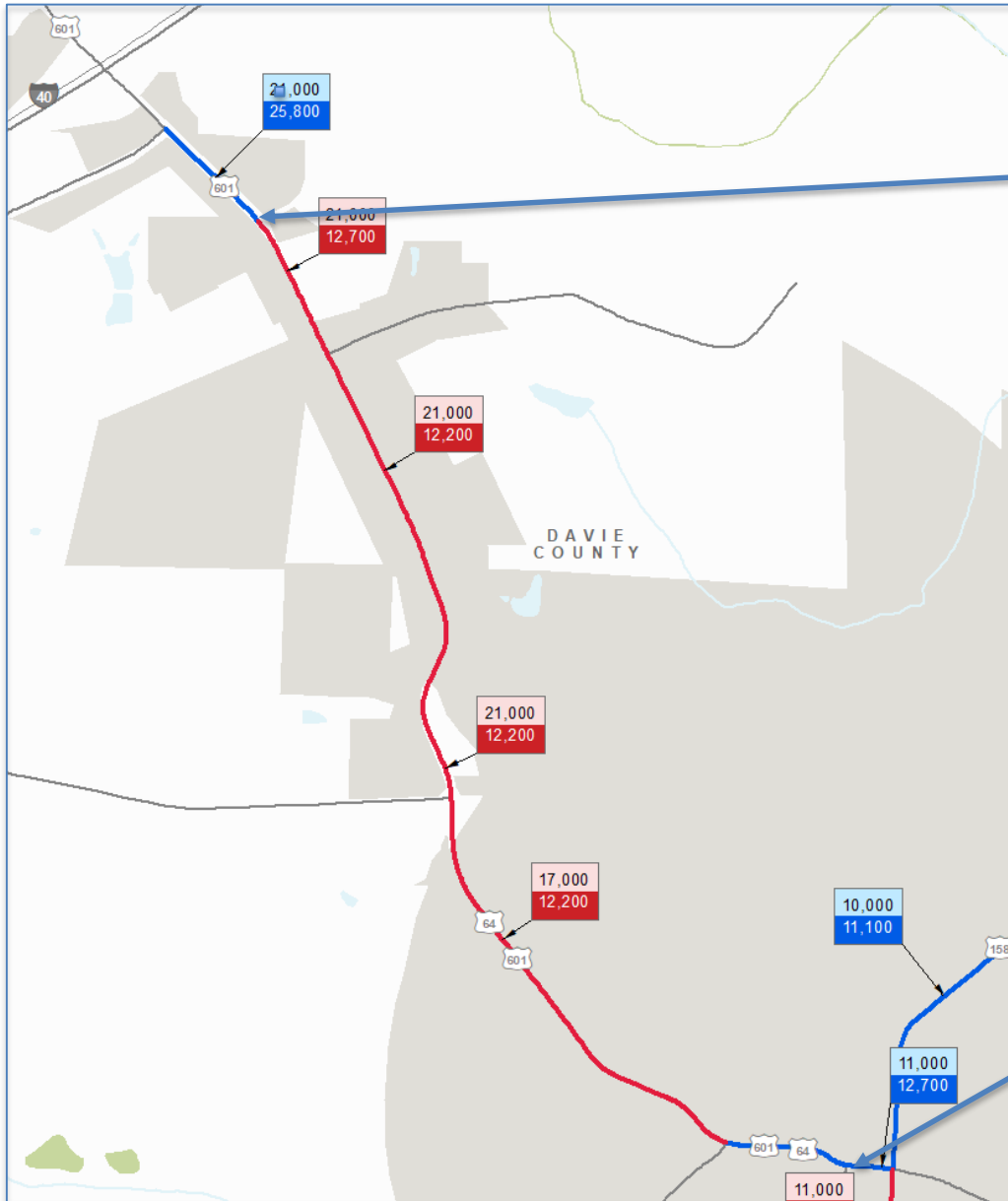
- 2 Lns, N of Worth St
- Volume: 11,000 vpd
- Capacity: 11,100 vpd
- Over capacity



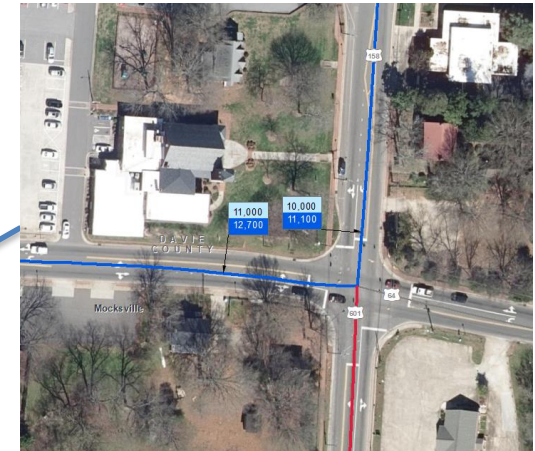
- 5Lns, S of US-52
- Volume: 26,000 29,000 vpd
- Capacity: 22,200-24,300 vpd
- Over capacity
- R-5714 - upgrade

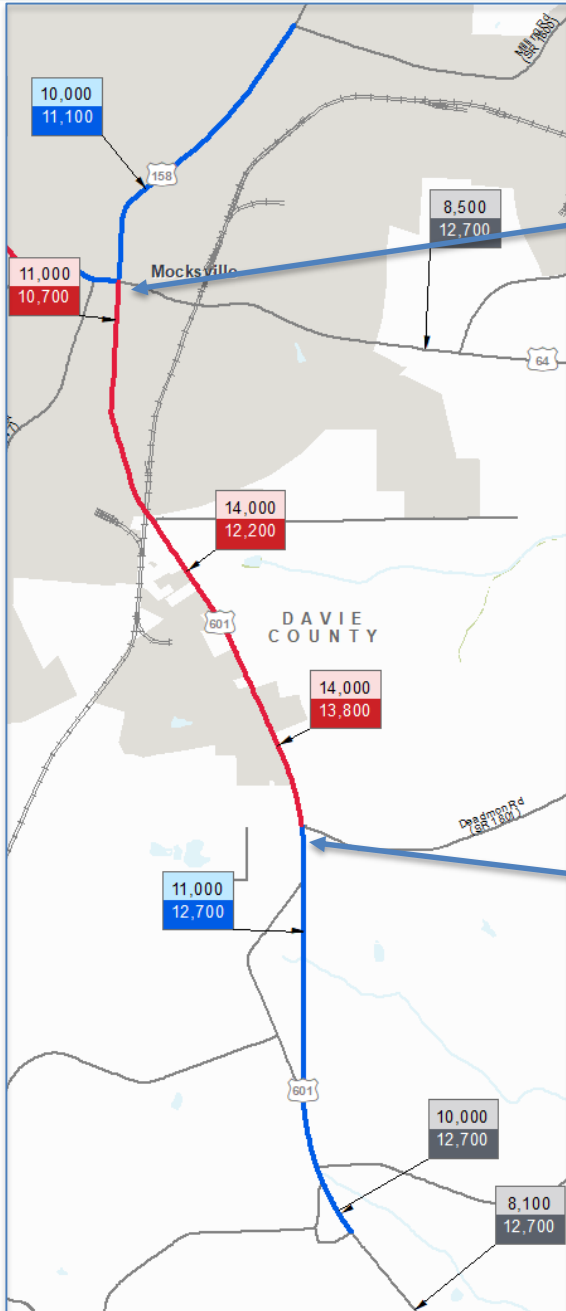


- 2 Lns, S of I-74
- Volume: 15,000 vpd
- Capacity 12,900 – 14,600 vpd
- Over capacity
- R-5836 - widen

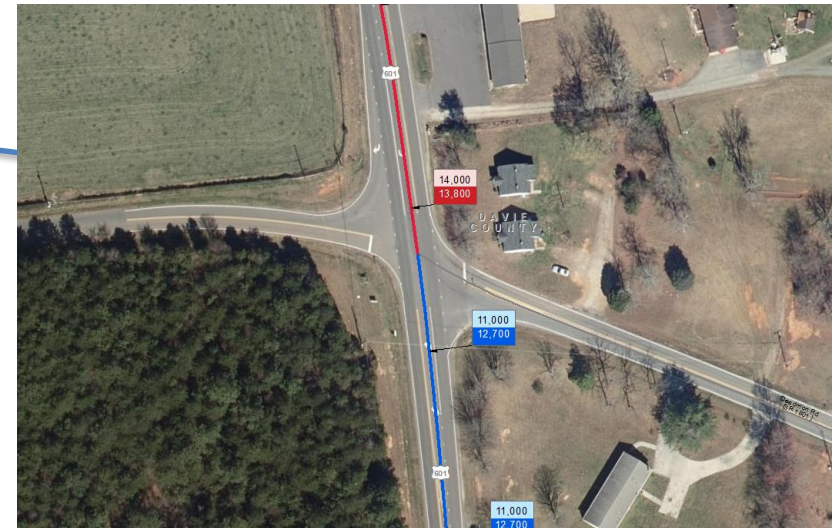


- 3 – 5 Lns, from I-40 to US 158
- Volume: 11,000 - 21,000 vpd
- Capacity 12,200 – 25,800 vpd
- Near - Over capacity





- 2-3 Lns, from Bethel Church Rd to Gladstone Rd
- Volume: 10,000 – 14,000 vpd
- Capacity: 11,100 – 13,800 vpd
- Near - Over capacity



High Frequency Crash Information

All Fatal Crashes Highlighted

39 Total Fatal Crashes locations

3 Fatalities along I-77/NC 89 in Surry County

2 Fatalities along SR 1125/SR 1175 in Yadkin County

37 single fatalities located in all three counties:

20 in Surry County

12 in Yadkin County

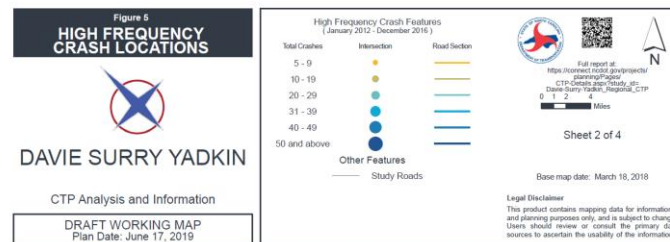
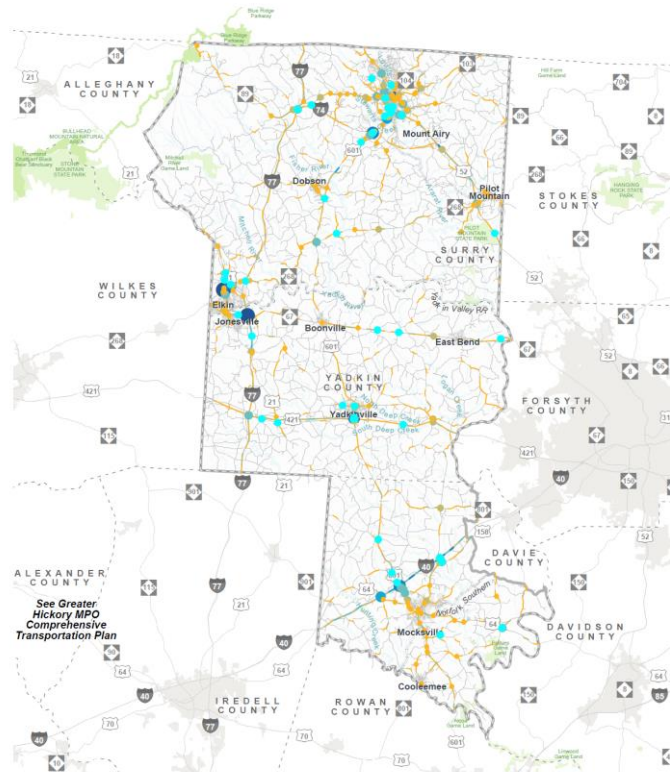
7 in Davie County

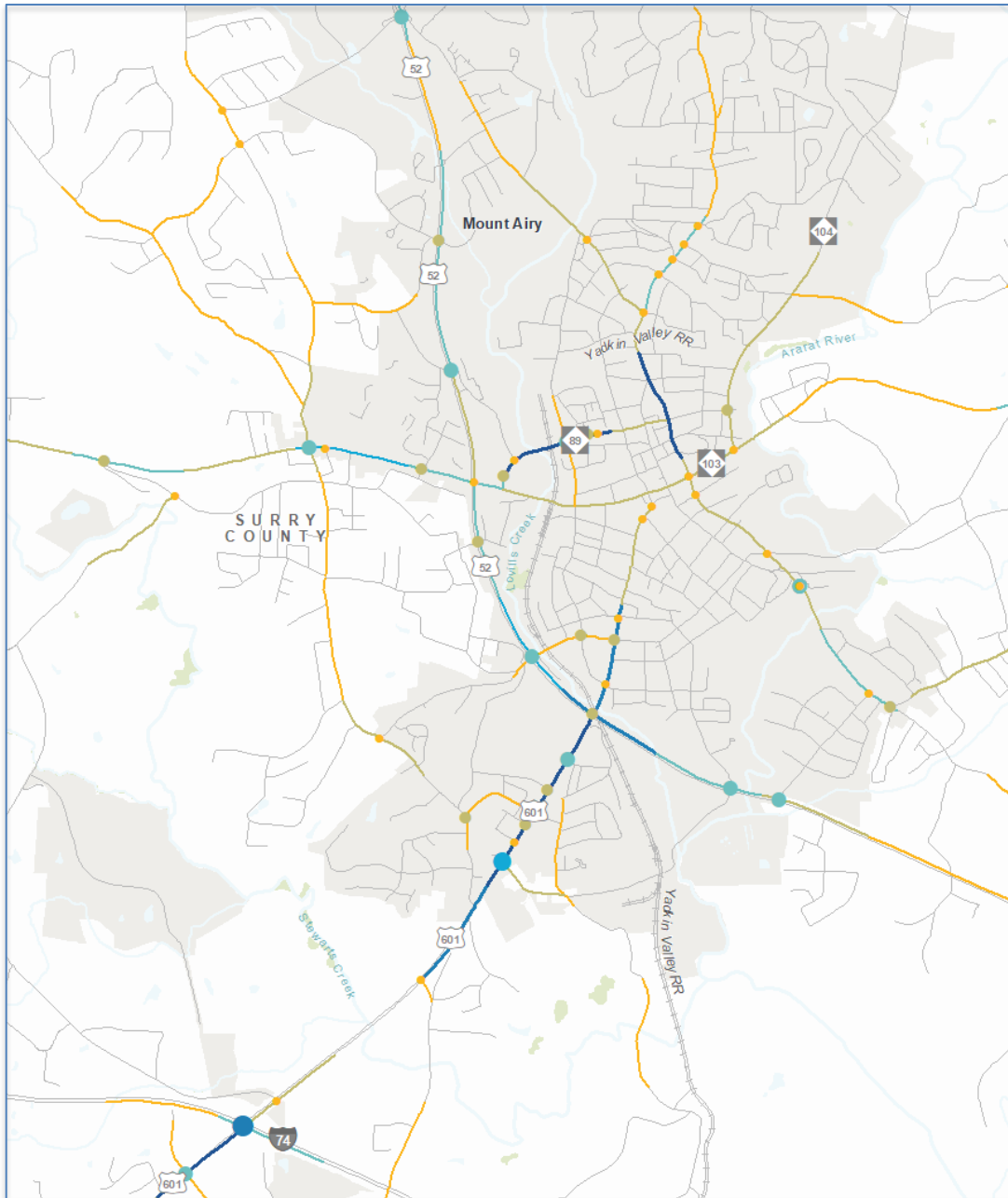
Priorities:

- Safety
- Resolving Deficiencies
- Minimizing Congestion
- Increasing Mobility

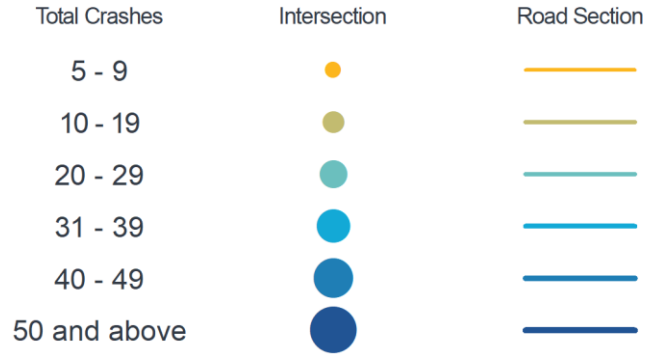
Most Crashes Point Locations

- 72 along I-77 (Yadkin)
- 53 along US Bus 21 (Surry)
- 48 along I-74 (Surry)
- 47 along I-40 (Davie)
- 47 along SR 1138 (Surry)
- 45 along US 601 (Yadkin)
- 31 along I-40 (Davie)
- 30 along US 601 (Surry)
- 28 along US 601 (Surry)



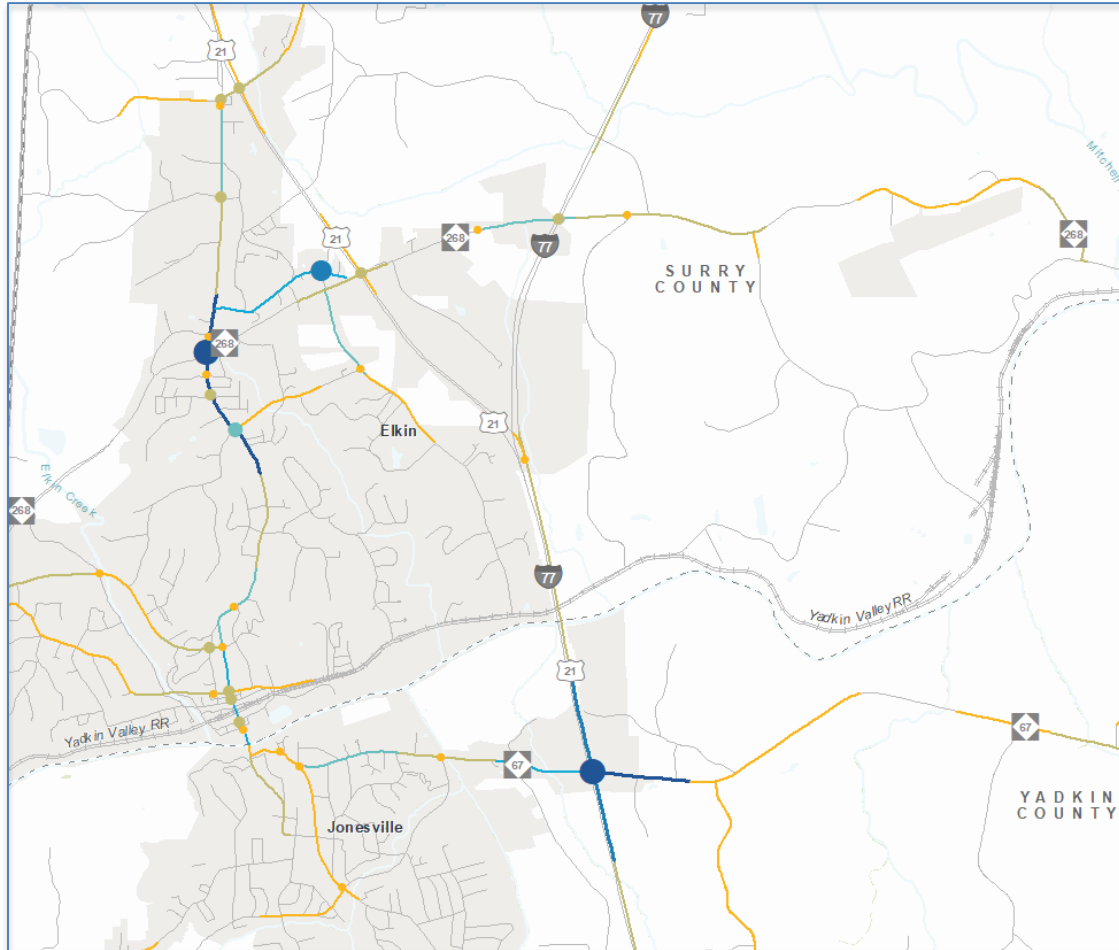


High Frequency Crash Features
(January 2012 - December 2016)



> 40 Crashes:

- I-74 and US 601 Intersection

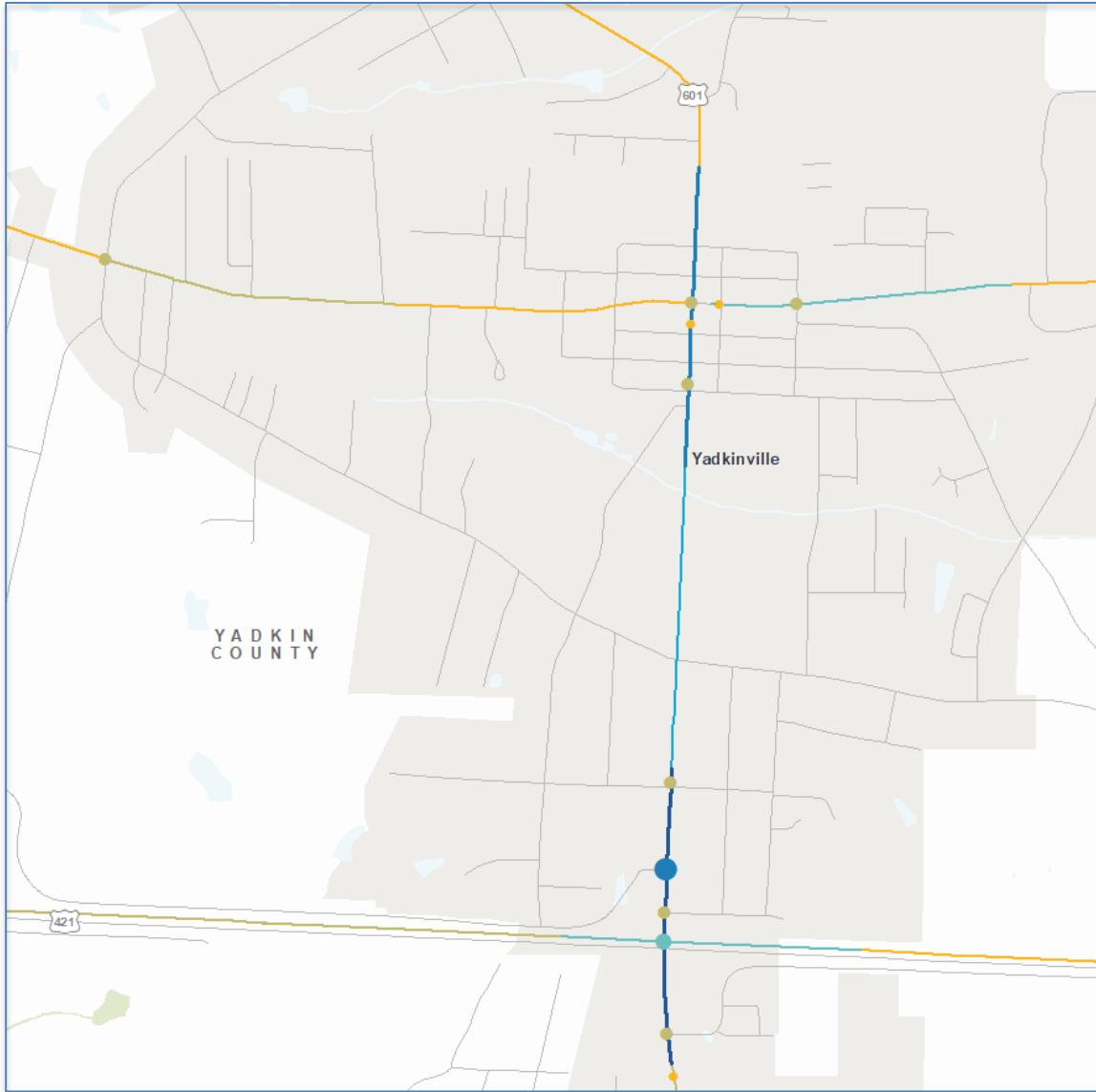


High Frequency Crash Features
(January 2012 - December 2016)

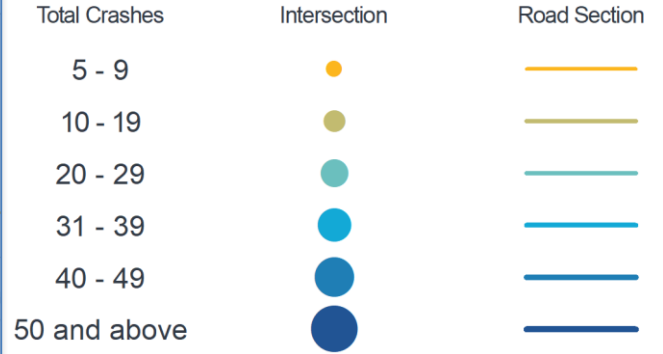
Total Crashes	Intersection	Road Section
5 - 9	●	—
10 - 19	●	—
20 - 29	●	—
31 - 39	●	—
40 - 49	●	—
50 and above	●	—

> 40 Crashes:

- I-77 and NC 67 Intersection
- NC 268 and Bridge St Intersection
- Oak Grove Rd and Johnson Ridge Rd



High Frequency Crash Features (January 2012 - December 2016)



> 40 Crashes:

- US 601 and Beroth Dr

YADKIN
COUNTY

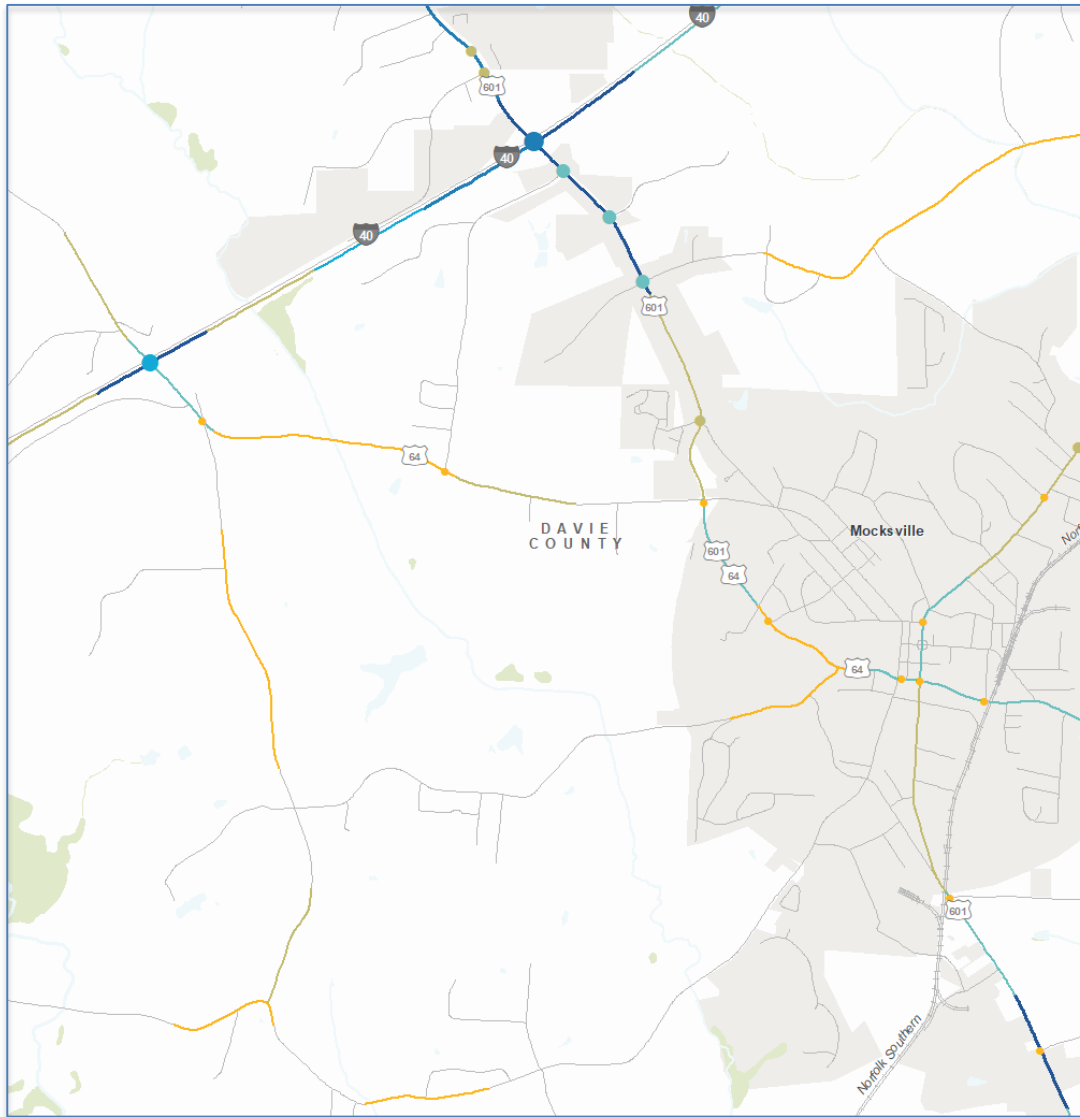
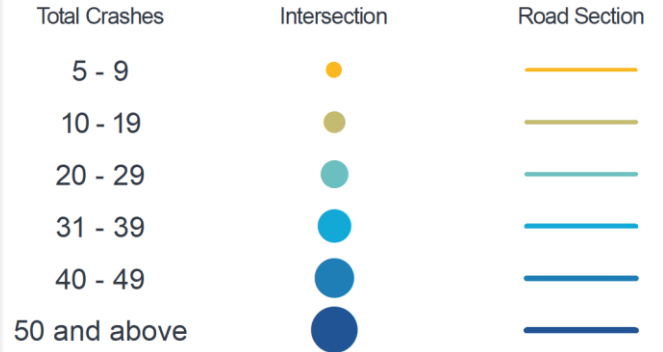
Yadkinville

601

421

Crash Data

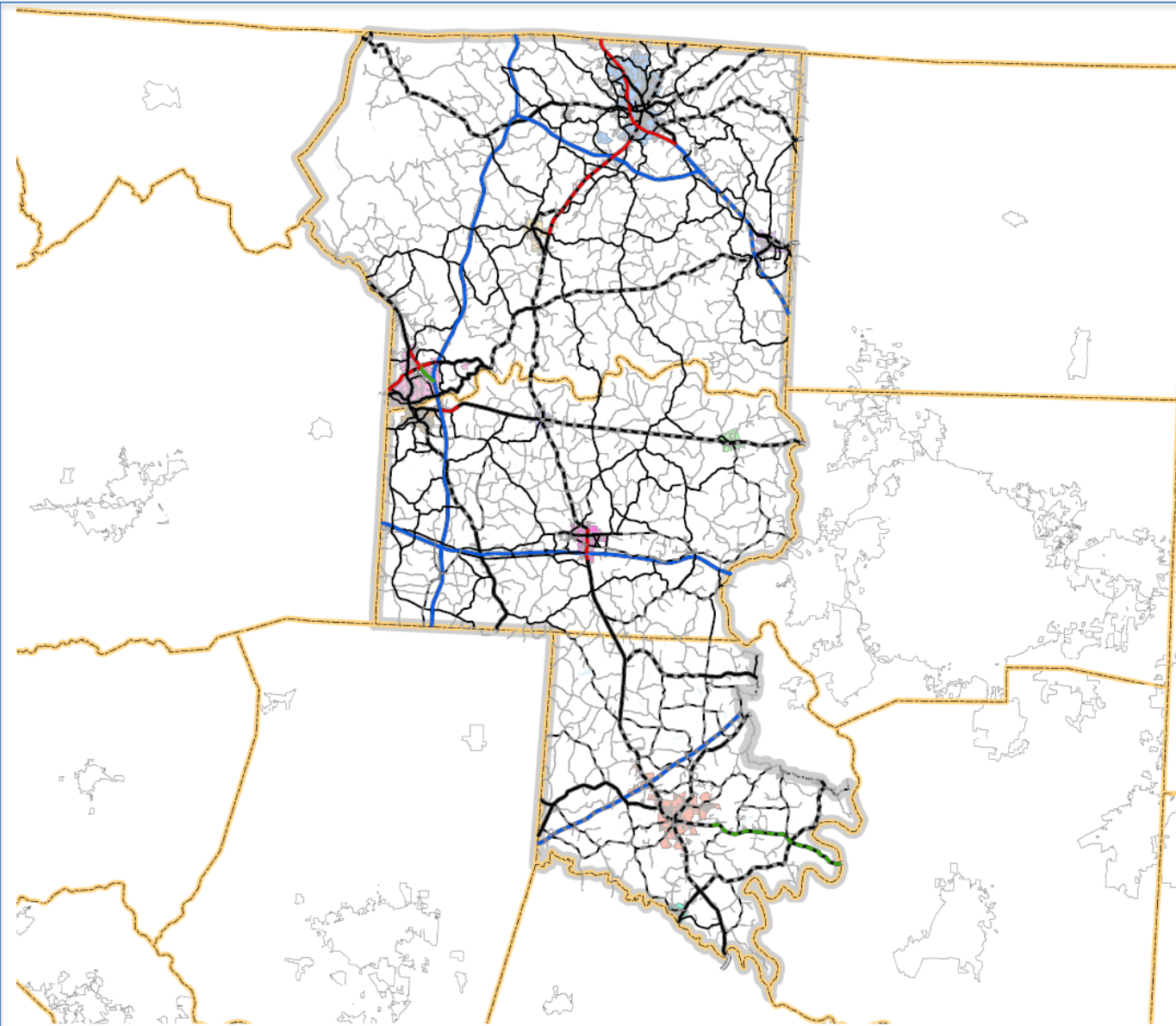
High Frequency Crash Features (January 2012 - December 2016)



> 40 Crashes:

- I-40 and US 601

Network Review



WORKING MAP NETWORK



Davie, Surry, and Yadkin Comprehensive Transportation Plan

Legend

All Study Roads

RouteClass, RouteInventory

- Interstate, US, and NC Routes
- Secondary Routes
- Local Roads
- County Boundary (Outline)
- CTP Study Extent



Full report at:
<http://tinyurl.com/DCHC-CTP>



Sheet 1 of 1

Base map date: March 18, 2018

Legal Disclaimer

These concepts will need additional analysis to meet state and federal environmental regulations, to determine final locations and designs, and to be funded for implementation. Local zoning or subdivision ordinances may require the dedication of right of way based on the concepts shown on the Comprehensive Transportation Plan and local collector street plans, based on N.C.G.S. § 136-88.2 and § 136-88.10.

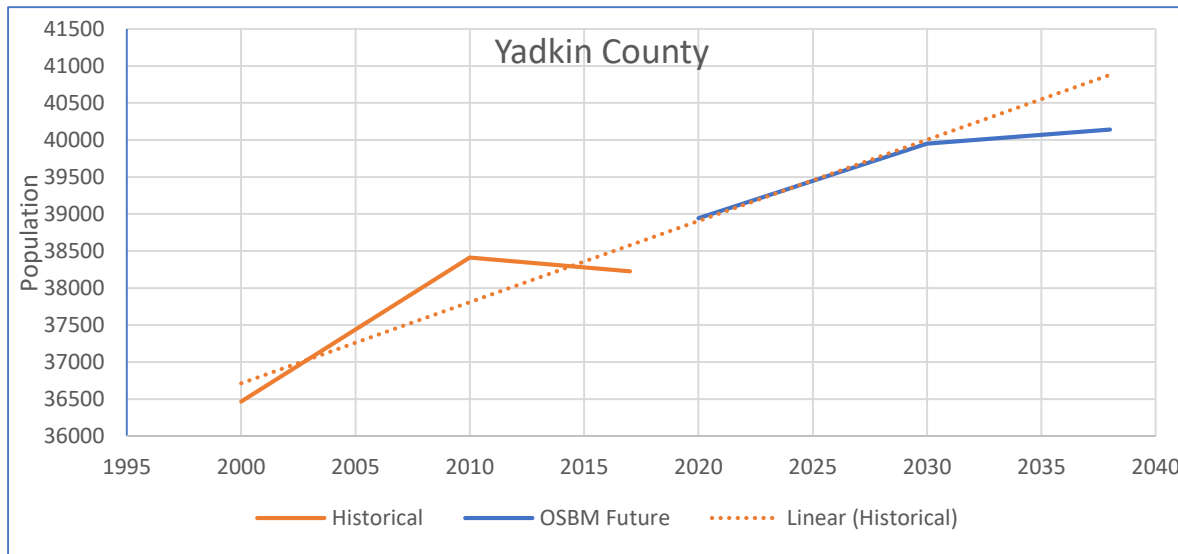
DRAFT WORKING MAP
Plan Date: June 13, 2019

Population and SE Data Information

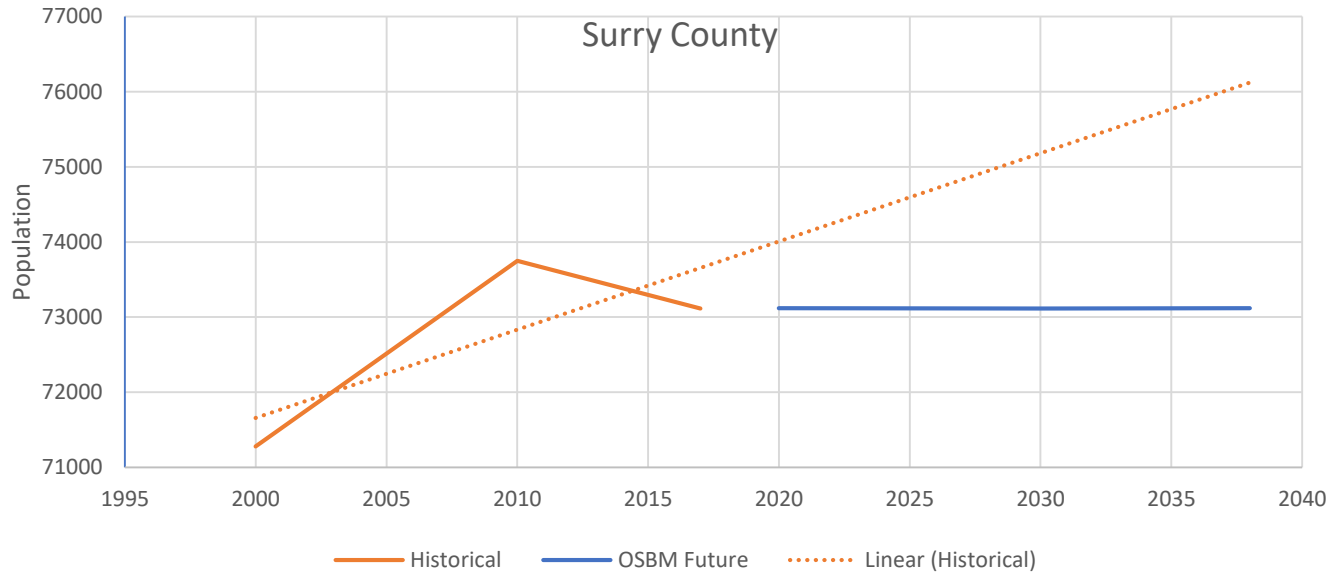
2017 Certified County Population Estimates

County	July 2017 Estimate
Davie	42686
Surry	73116
Yadkin	38226

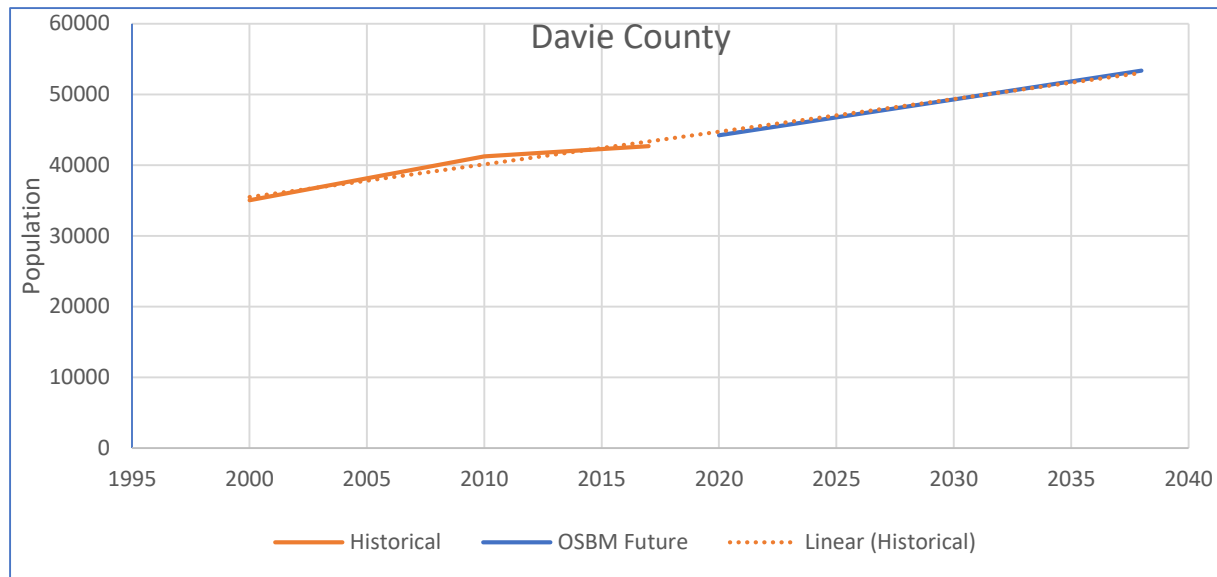
Historical	2000	2010	2017
Yadkin	36468	38409	38226
OSBM Future	2020	2030	2038
	38944	39952	40140



Yadkin	36468	38409	38226
Historical	2000	2010	2017
Surry	71280	73748	73116
OSBM Future	2020	2030	2038
	73117	73116	73117



Historical	2000	2010	2017
Davie	35033	41221	42686
OSBM Future	2020	2030	2038
	44209	49280	53338



Next Steps?

- Prepare SE data for local endorsement.
- Develop FY traffic forecast (non-modeled area).

Davie-Surry-Yadkin Regional CTP Team from NCDOT:

- Michael Abuya, Project Manager
mrabuya@ncdot.gov
919-707-0990
- Reuben Crummy, Engineer
rcrummy@ncdot.gov
919-707-0971
- Daryl Vreeland, Engineer
dvreeland@ncdot.gov
919-707-0922
- John A. (Andy) Bailey, Western Piedmont Planning Engineering Supervisor
jabailey@ncdot.gov
919-707-0991

Questions?