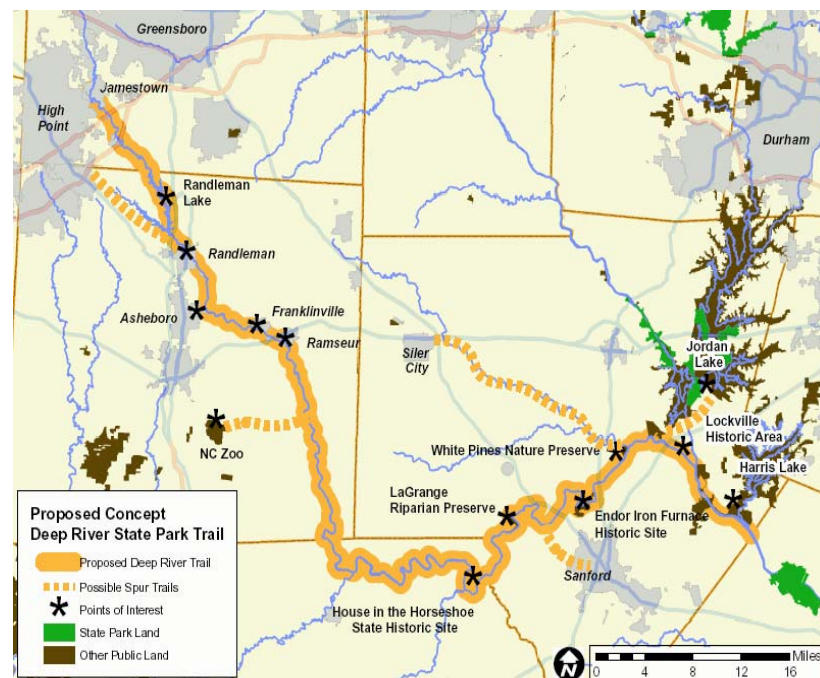


## Deep River Trail Background

There has been significant interest in developing tourism and recreation along the Deep River for some time, both locally and regionally. The Jamestown In Motion committee worked to develop the Deep River walking trail in the late 1990s and early 2000s based on a Urban Design Assistance Team plan from 1996. Some sections of the trail were implemented connecting the Mendenhall Plantation to the Deep River, however with the passing of the late John Hamil, work by Jamestown In Motion on the trail stopped.

The General Assembly designated the Deep River Corridor State Park Trail in 2007, after many years of work by advocates along the Deep River. The designation of the Deep River as an entity in the State Parks system has sparked interest in reviving planning efforts for a land and water based trail in Jamestown.

### Deep River State Park Trail Concept Map



# Jamestown Deep River Trail Plan

## Executive Summary

### Overview

In July of 2008 the Town of Jamestown requested the Piedmont Triad Council of Governments (PTCOG) assistance in developing the *Town of Jamestown Deep River Trail Plan*. The plan was developed in cooperation with the Jamestown Parks & Recreation Advisory Committee, the Town Council, Town staff, Guilford County staff, High Point staff, State Parks & Recreation staff, and multiple landowners along the Deep River Trail corridor. The plan sections provide assessments and recommendations for the following primary project elements:

**Local Blueway (Paddling) Trail** – provide recommendations for the location & design of put-in and take-out access sites for a local blueway (paddling) trail along the Deep River from City Lake Park to the Oakdale Mill dam;

**Local Greenway (Hiking) Trail** – provide recommendations for the location & design of trailheads and the alignment of a local greenway (hiking) trail along the Deep River from City Lake Park to the Oakdale Mill dam; and

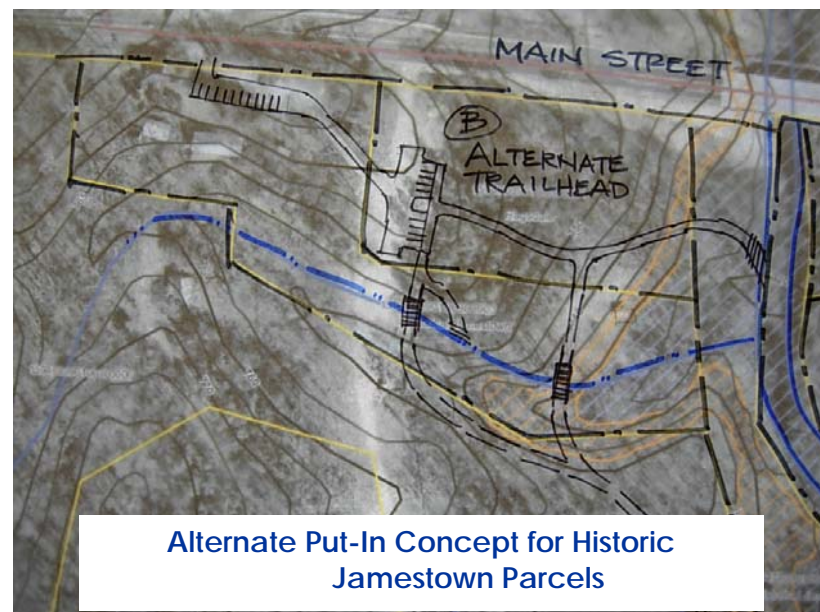
**Regional Greenway and Blueway Trail** – provide recommendations for the conceptual alignment of a regional greenway trail along the Deep River corridor from Oakdale Mill dam south to the Southwest Guilford County Park.

### Organization of the Plan

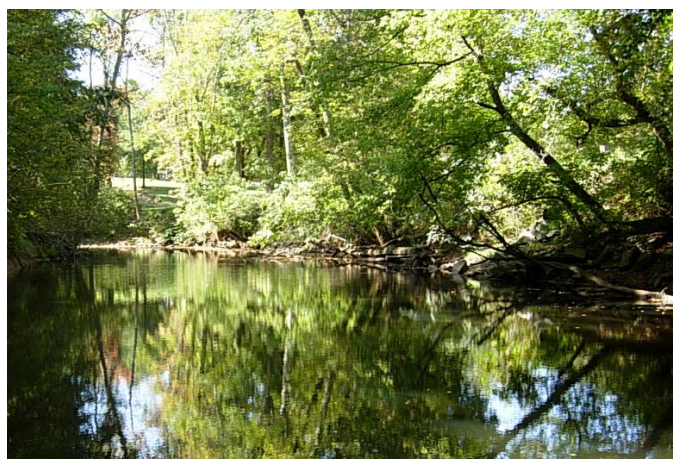
- Section 1: Project Background
- Section 2: Local Blueway (Paddling) Trail
- Section 3: Local Greenway (Hiking) Trail
- Section 4: Local Trail Recommendations
- Section 5: Regional Blueway and Greenway Trail
- Appendix A: 1995 Deep River Heritage Corridor Proposal

## Blueway Access Site Concepts

The Deep River Trail Plan includes a number of access site concept or “sketch” plans of how the river site may be developed. There are multiple conceptual designs shown for access sites along the local trail. For example parking, access roads, trail alignments, kiosk and trailheads may be drawn for each site. The concepts will be useful in discussing the blueway trail with stakeholders and can be used in developing a specific site plan for the access sites. An example of a concept is shown here, please see the full plan (Section 2) for more details and context.



Alternate Put-In Concept for Historic Jamestown Parcels



Deep River near Main Street

### City Council

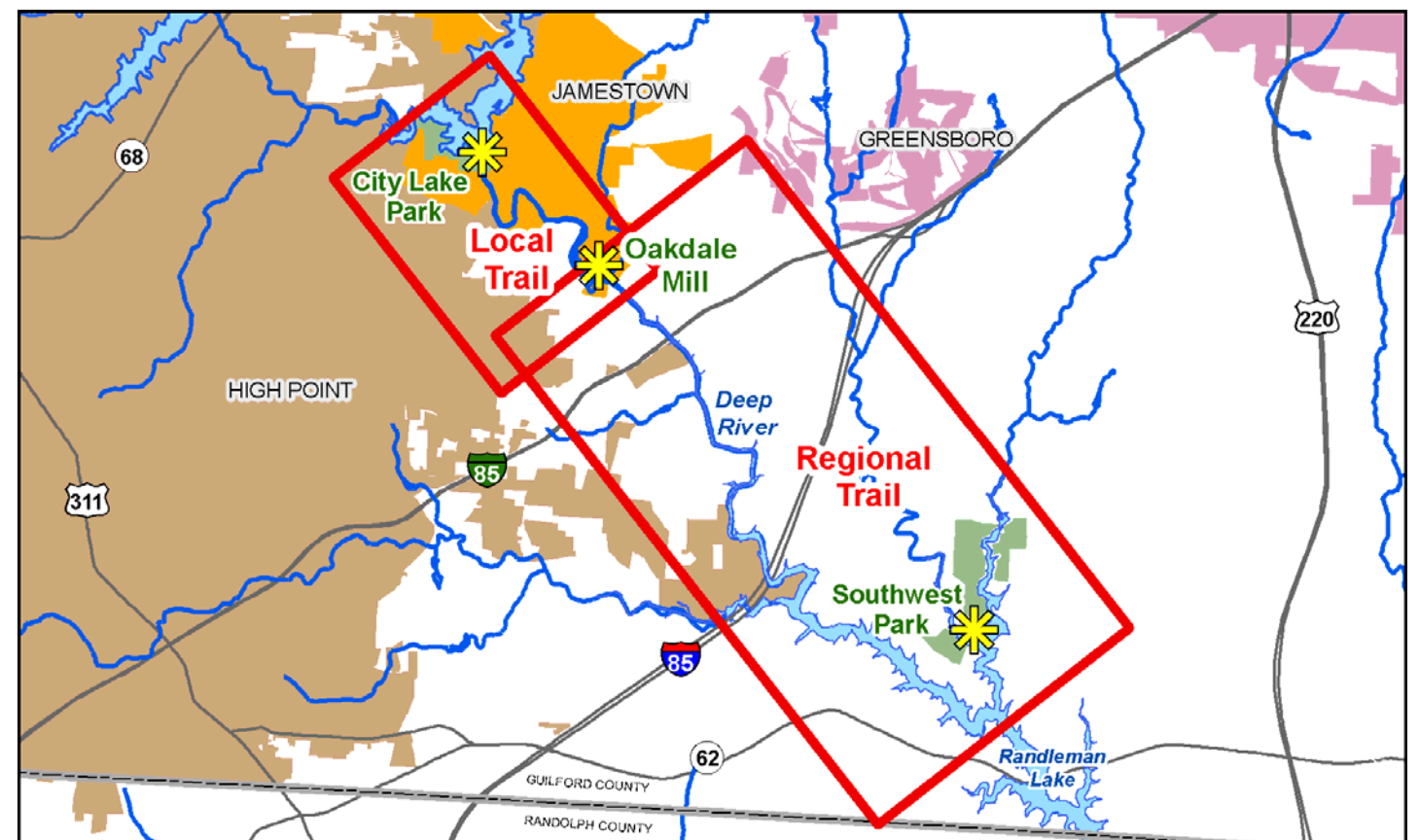
Keith L. Volz , Mayor	Will Ragsdale
Georgia Nixon-Roney, Mayor Pro Tem	R. Brock Thomas
J. Frank Gray	



### Parks & Recreation Advisory Committee

Marla Kurzec, Chairwoman	Al Bartko
Fred Kelly	Will Ragsdale
Tom Tervo	Larry Lain
Linda Schumacher	Lynn Tice

### Local and Regional Trail Study Area



## Summary of Planning Work

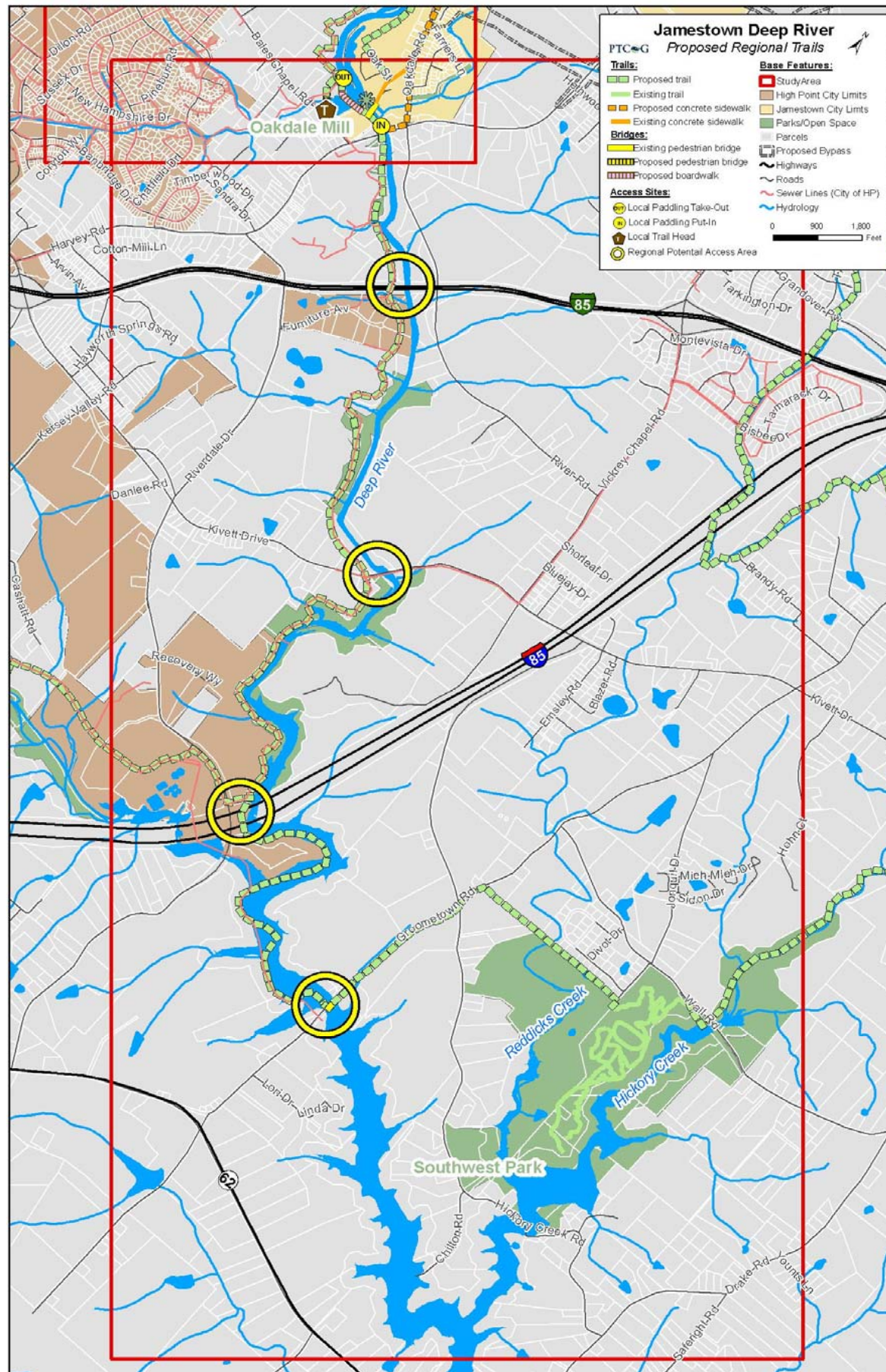
The PTCOG staff conducted field assessments and analyzed existing conditions data (i.e. ortho-photography, topography, hydrography, floodplains, vegetation; on-site and surrounding land uses, and land ownership) in developing a plan for the local blueway and greenway trail. The map (opposite page) shows the location of recommended trail features based on this analysis and landowner contact.

A regional trail analysis was also conducted to look at connecting Jamestown and Southwest Park on Randleman Lake. This analysis did not involve private landowner contact, however discussions with the Executive Director of the Piedmont Triad Regional Water Authority (PTRWA), Guilford County and City of High Point did occur and are included in the full plan document. Further discussions with private landowners and the PTRWA board will need to occur to make the regional trail feasible. The recommendations for a regional trail alignment and potential access points are shown in the map (right).



Railroad Bridge over the Deep River

### Regional Trail Recommendations Map



### Local Trail Recommendations Map

