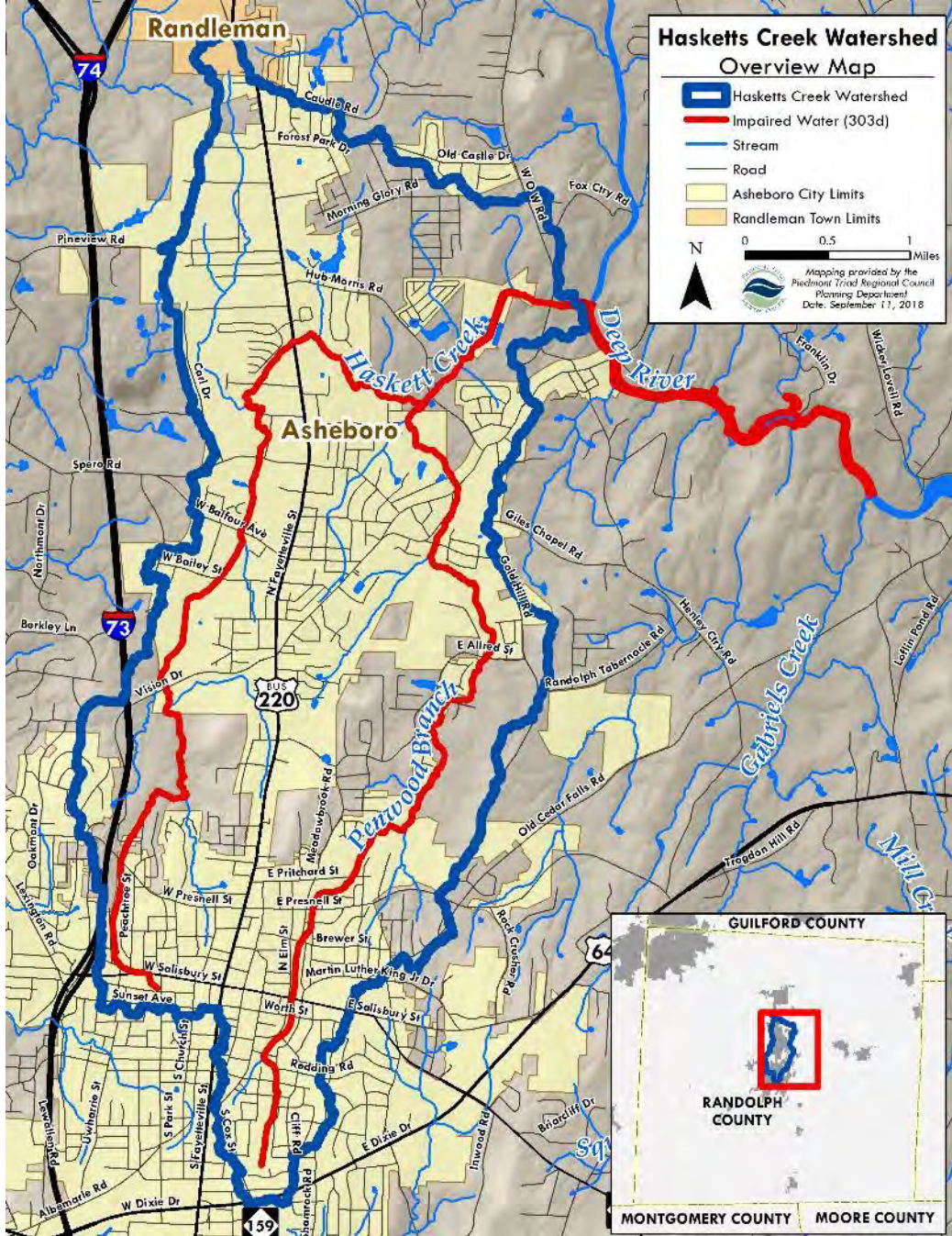




HASKETT'S CREEK WATERSHED PLAN

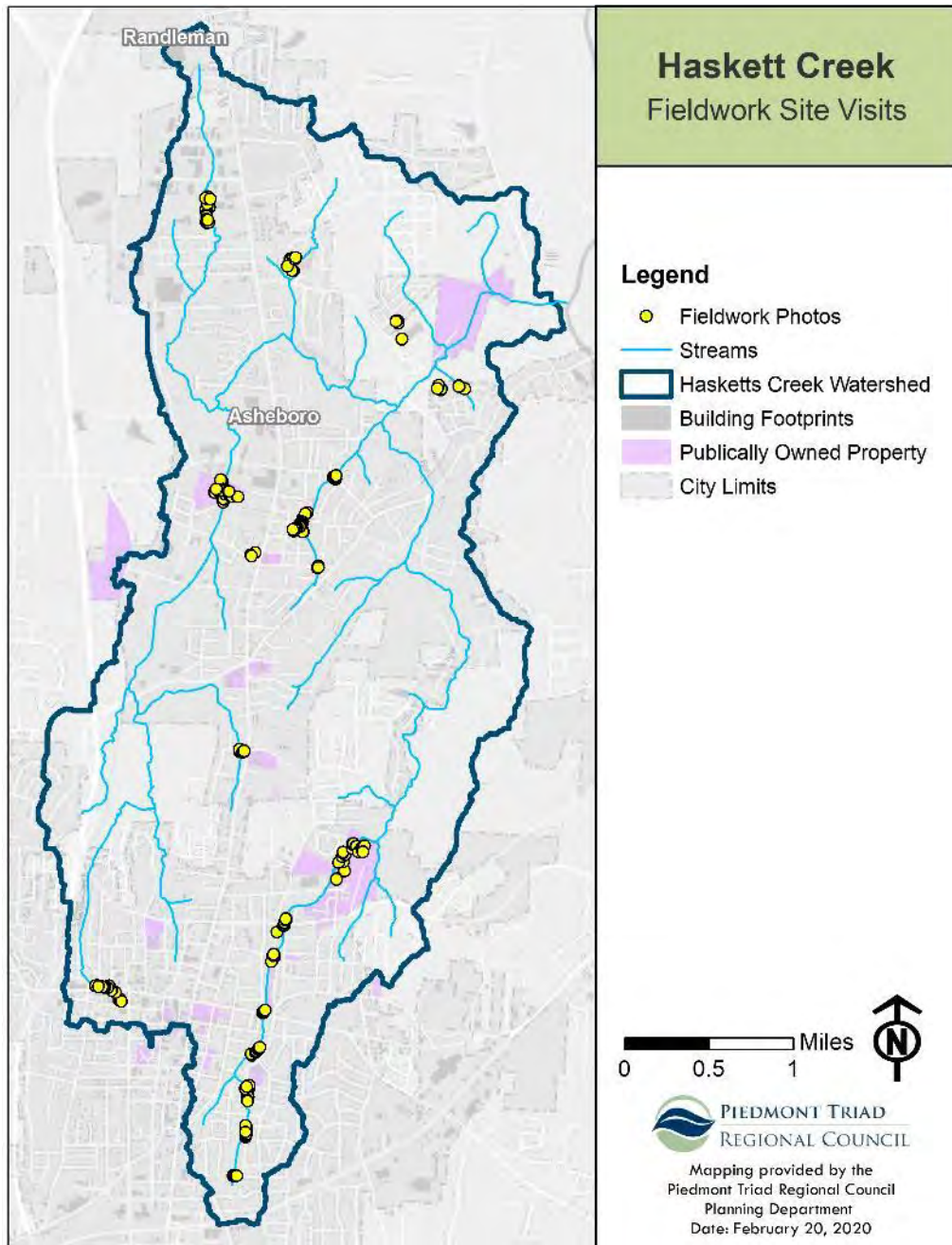
STAKEHOLDER MEETING #3





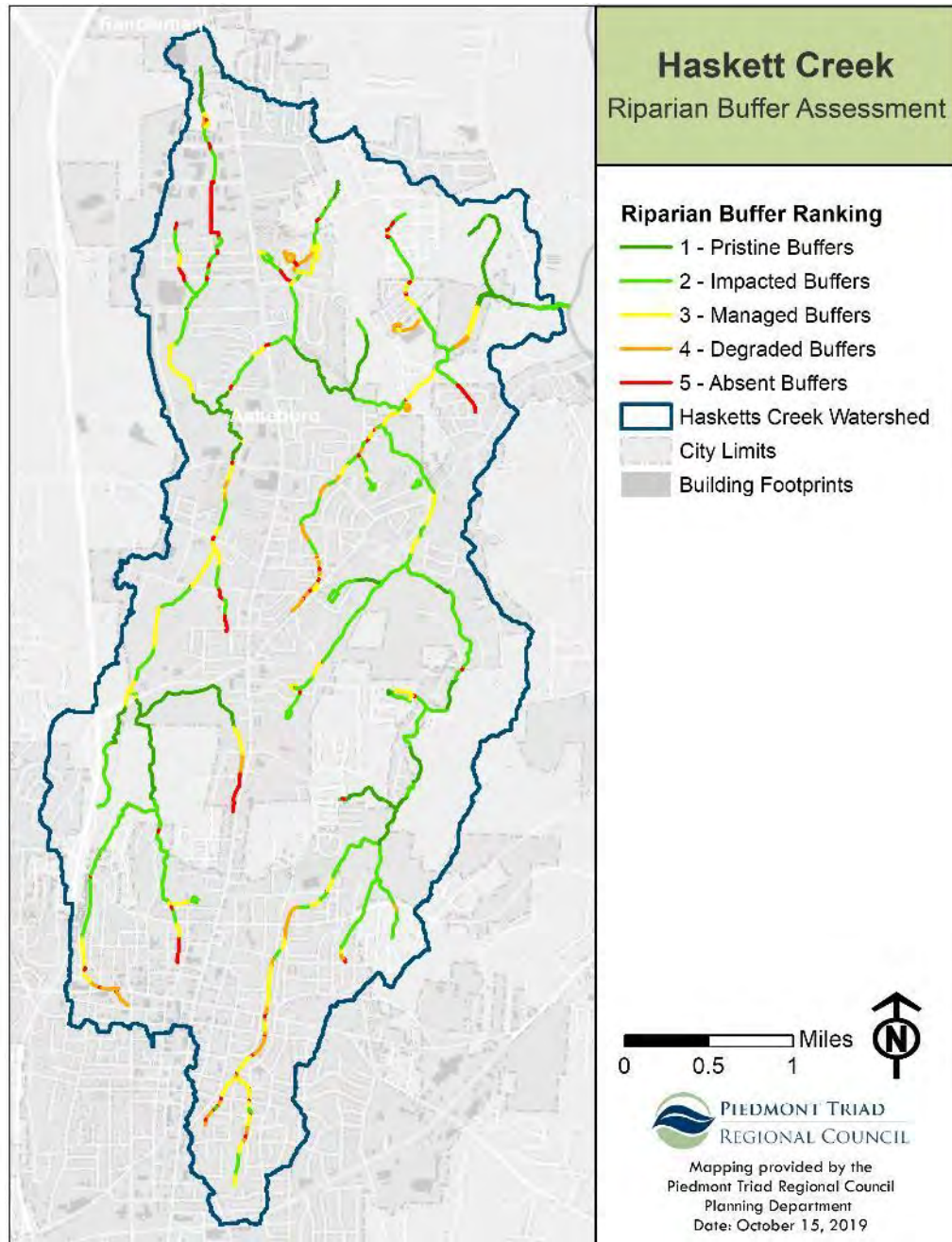
MEETING RECAP

- Reviewed Watershed Inventory
 - Water quality data
 - Land use and development patterns
 - Riparian buffer analysis
 - Code and ordinance worksheet
- Began Defining Watershed Goals & Strategies
 - Primary goal: Improve benthic community rating
 - Strategies: Reduce stormwater through SCMs, preserve open space, protect and improve riparian buffers, and increase outreach & education.



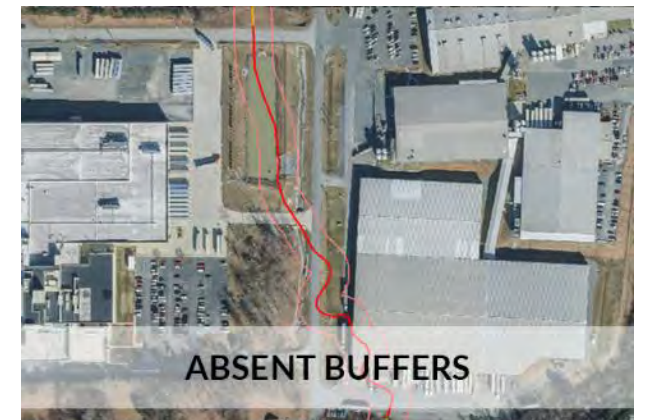
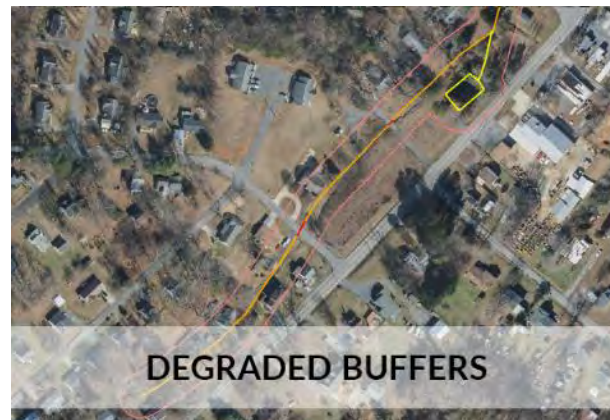
FIELDWORK OVERVIEW

- Visited 19 locations throughout the watershed
- Collected:
 - 282 Photos +
 - 47 SCITS Points
- Identified 7 potential SCM projects



RIPARIAN BUFFER SITE VISITS

- Visited all *Degraded* and *Absent* buffers to:
 - Ground truth aerial imagery
 - Identify nearby outfalls using SCITS tool
 - Identify SCM project opportunities





RIPARIAN BUFFER SITE VISITS

Common Themes

- Erosion
- Lack of buffer vegetation
- Hardened structures
- Litter





RIPARIAN BUFFER SITE VISITS

Common Themes

- Erosion
- Lack of buffer vegetation
- Hardened structures
- Litter





RIPARIAN BUFFER SITE VISITS

Common Themes

- Erosion
- Lack of buffer vegetation
- Hardened structures
- Litter





RIPARIAN BUFFER SITE VISITS

Common Themes

- Erosion
- Lack of buffer vegetation
- Hardened structures
- Litter





RIPARIAN BUFFER SITE VISITS

HOWEVER

- There were also many HEALTHY stream segments



Haskett Creek

Source & Conveyance
Identification Tool (SCITS)

SCITS Strength

- 1 Weak
- 2
- 3 Moderate
- 4
- 5 Strong

- Haskett's Creek Watershed
- Streams
- City Limits

0 0.5 1 Miles



PIEDMONT TRIAD
REGIONAL COUNCIL

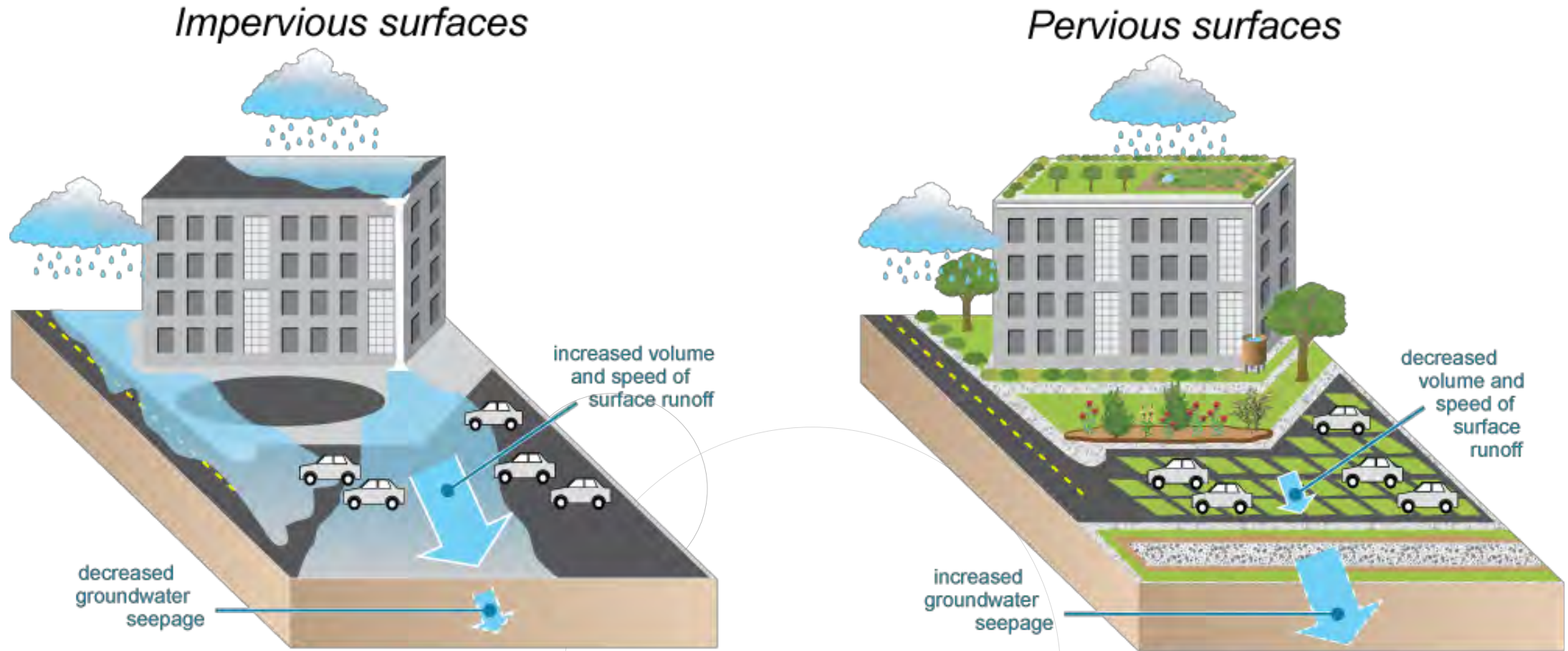
Mapping provided by the
Piedmont Triad Regional Council
Planning Department
Date: February 18, 2020

SOURCE & CONVEYANCE IDENTIFICATION TOOL





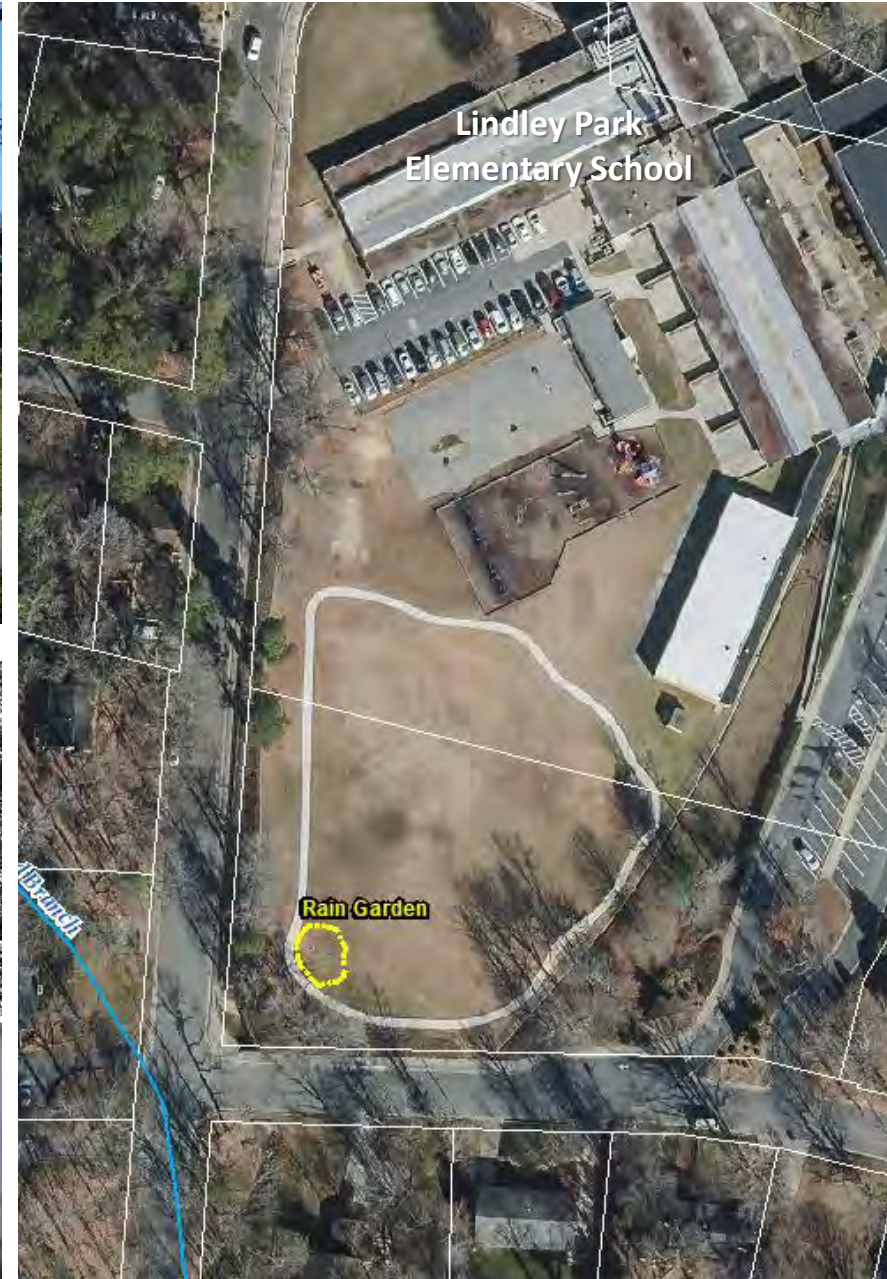
SCM PROJECT OPPORTUNITIES





SCM PROJECT OPPORTUNITIES

- Bioretention
- Bioswale
- Constructed Wetland
- Rain Garden**
- Stormwater Pond





SCM PROJECT OPPORTUNITIES

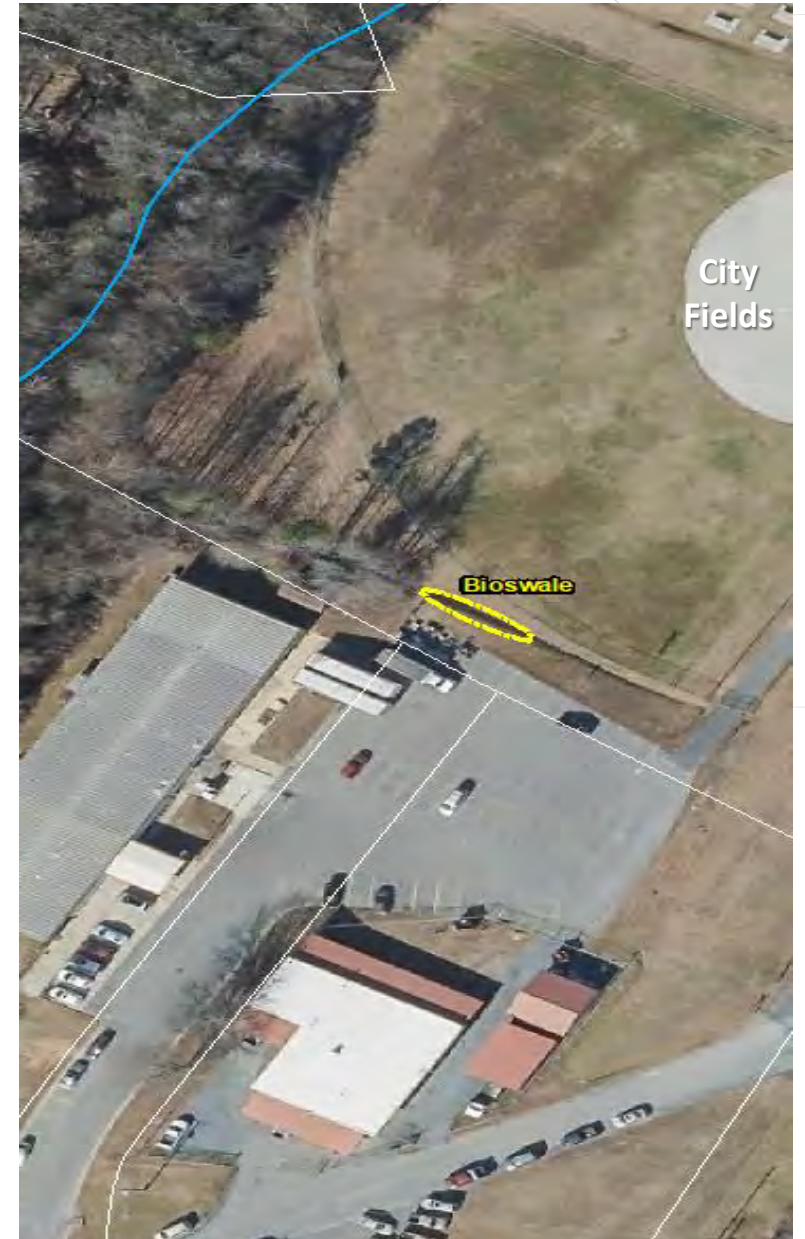
- Bioretention
- Bioswale
- Constructed Wetland
- Rain Garden
- Stormwater Pond



Before



After





SCM PROJECT OPPORTUNITIES

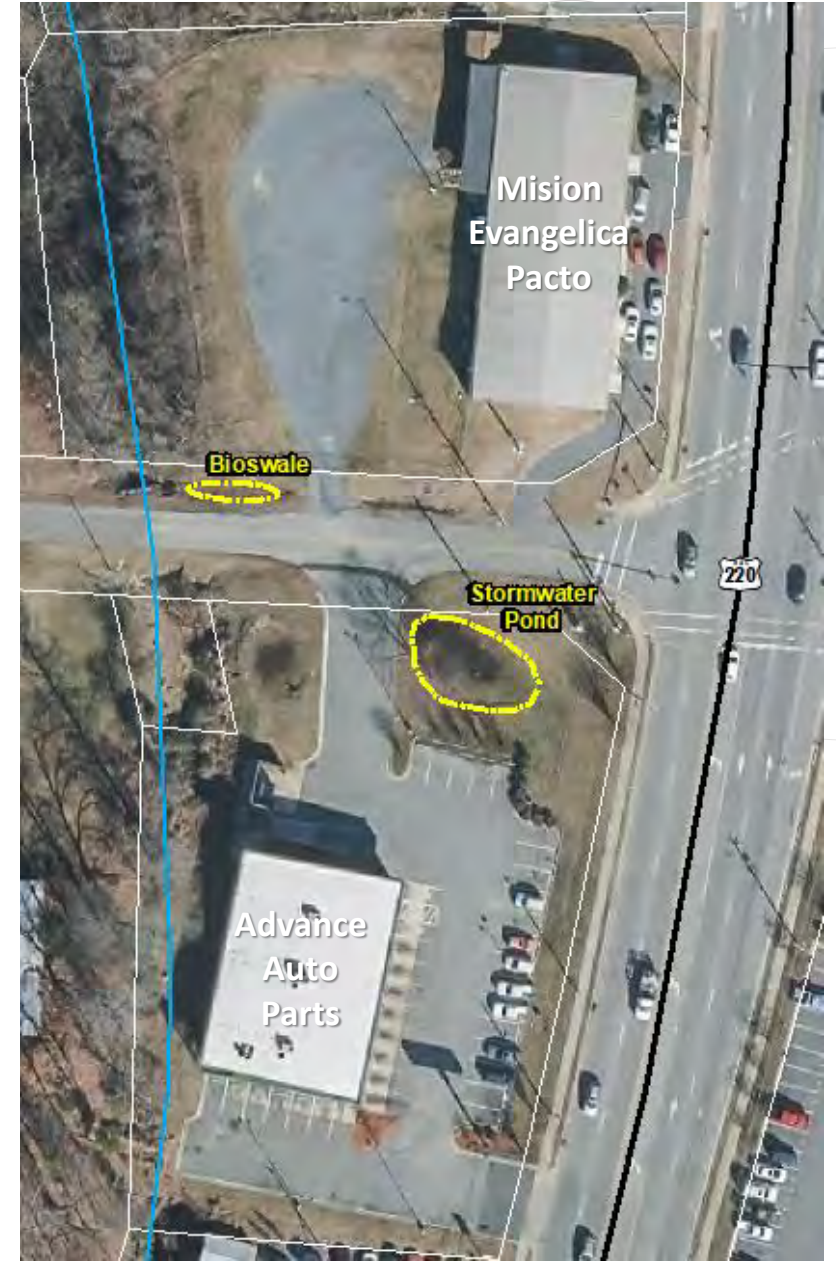
Bioretention

Bioswale

Constructed Wetland

Rain Garden

Stormwater Pond





SCM PROJECT OPPORTUNITIES

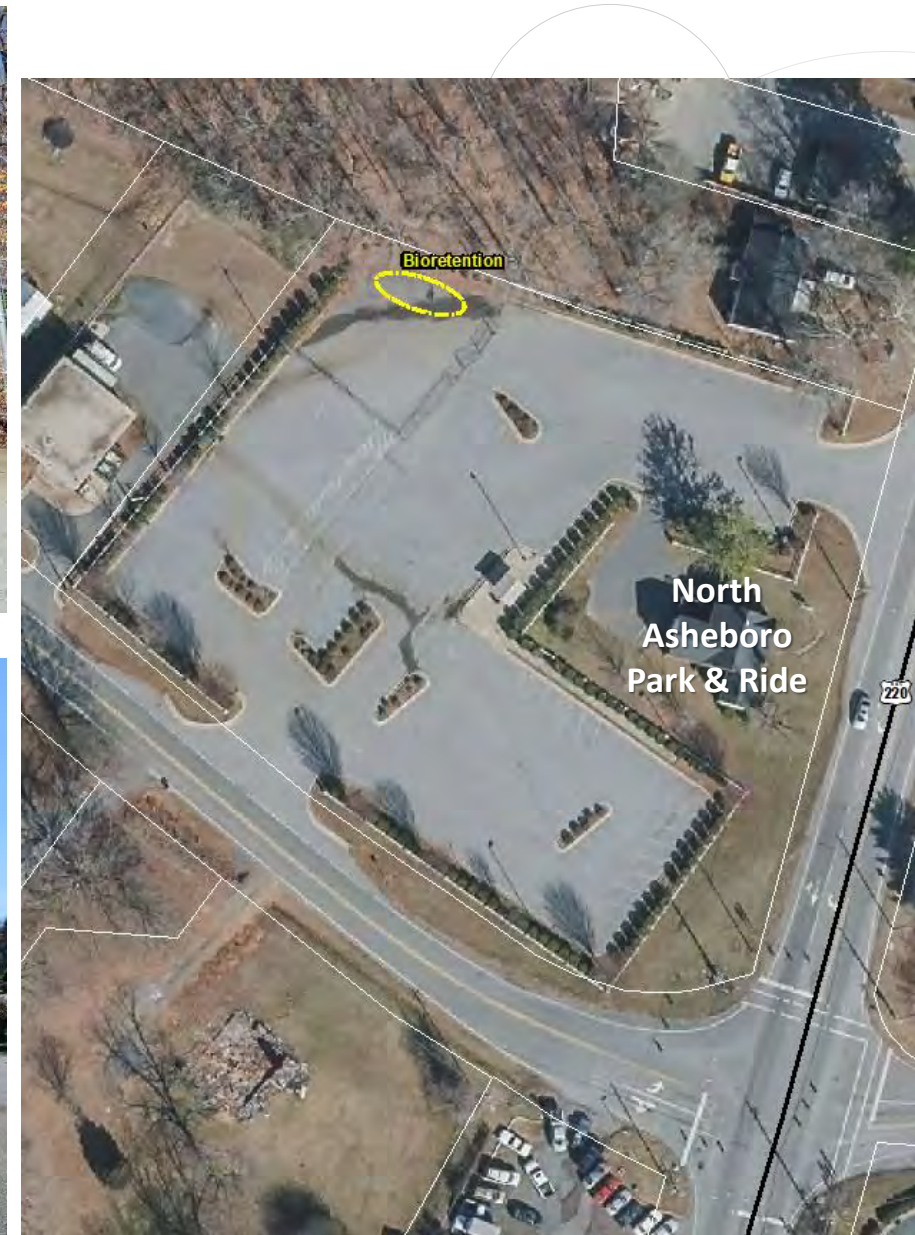
Bioretention

Bioswale

Constructed Wetland

Rain Garden

Stormwater Pond





SCM PROJECT OPPORTUNITIES

Bioretention

Bioswale

Constructed Wetland

Rain Garden

Stormwater Pond





OTHER OPPORTUNITIES





OTHER OPPORTUNITIES: RIGHT OF WAYS

Before

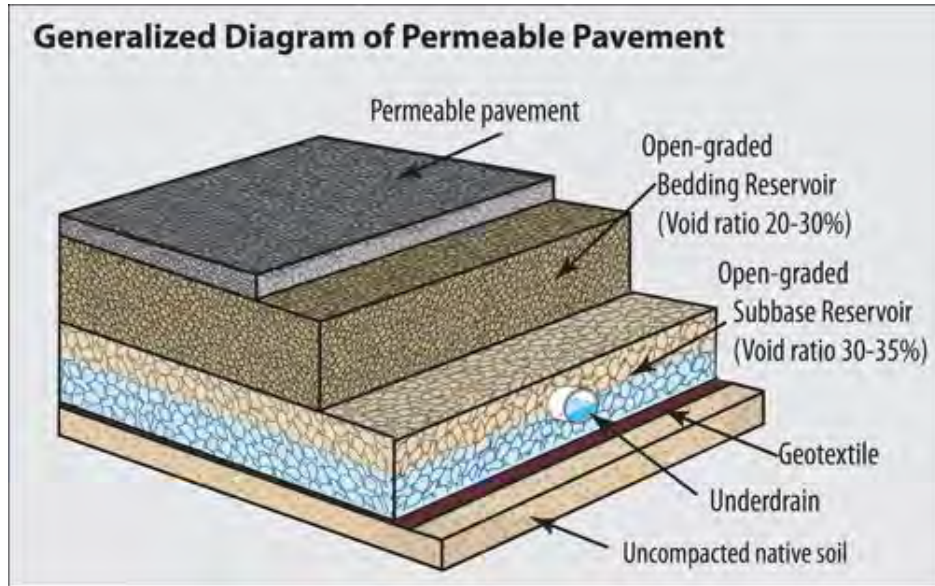


After





OTHER OPPORTUNITIES: PARKING





OTHER OPPORTUNITIES: RESIDENTIAL

Disconnect Downspouts



Rain Gardens

Rain Barrels





QUESTIONS & DISCUSSION





Goals, Strategies, & Actions

Improve Benthic Community Rating to Good-Fair

Reduce Stormwater Loads

- Actions
- Actions
- Actions



Protect and Restore Riparian Buffers

- Actions
- Actions
- Actions



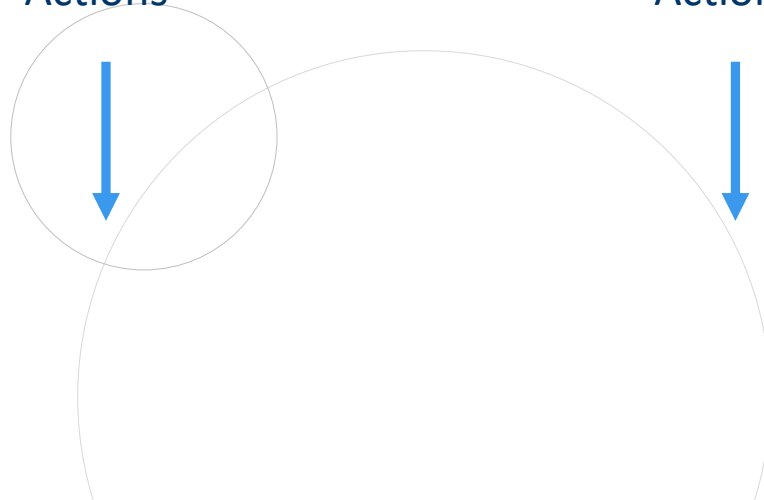
Preserve Open Space

- Actions
- Actions
- Actions



Increase Outreach & Education

- Actions
- Actions
- Actions





Goals, Strategies, & Actions

Strategy:

Specific Action

How can we best achieve the goal/strategy?

What steps need to be taken?

Partners (circle lead)

Who should lead this effort?

What other partners are needed?

Timeframe

How high of a priority is this action?

What is a realistic timeframe to complete this action?

Resources Needed

What technical or financial resources are needed to support this action?

Do other steps need to be taken first?

Measures of Success

How can we track the completion and effectiveness of this action?

What metrics could be used?



THANK YOU



ccolvin@ptrc.org



www.ptrc.org

