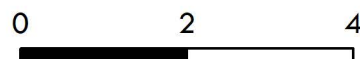
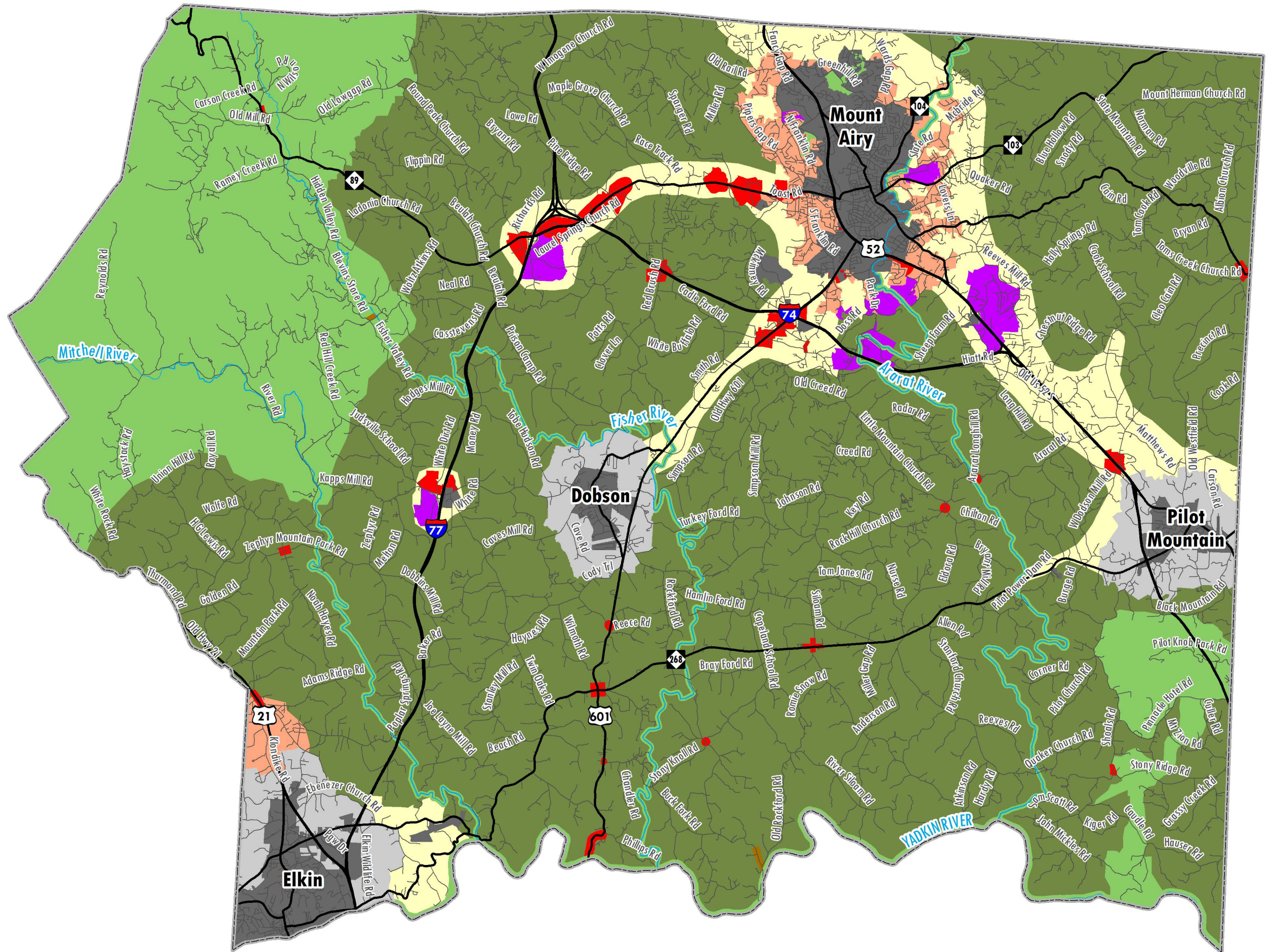


SURRY COUNTY Land Use Plan

FUTURE LAND USE

Future Land Use Areas

- Rural
- Rural Conservation
- Rural Growth
- Mixed Residential
- Commercial Development
- Industrial
- Historic
- Municipal
- ETJ



Miles

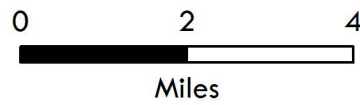


Mapping provided by the
Piedmont Triad Regional Council Planning Department
Date: October 21, 2019

SURRY COUNTY Land Use Plan

ZONING MAP

- RA - Rural Agricultural
- RE - Residential Exclusive
- RR - Residential Restricted
- RL - Residential Limited
- RG - Residential General
- MHP - Manufactured Home Park
- MR - Multifamily Residential
- PR - Planned Residential
- VR - Village of Rockford
- CP - Conservation Protected
- RB - Rural Business
- CB - Community Business
- HB - Highway Business
- MI - Manufacturing Industrial
- Municipal Jurisdiction



Mapping provided by the
Piedmont Triad Regional Council Planning Department
Date: September 17, 2019

