










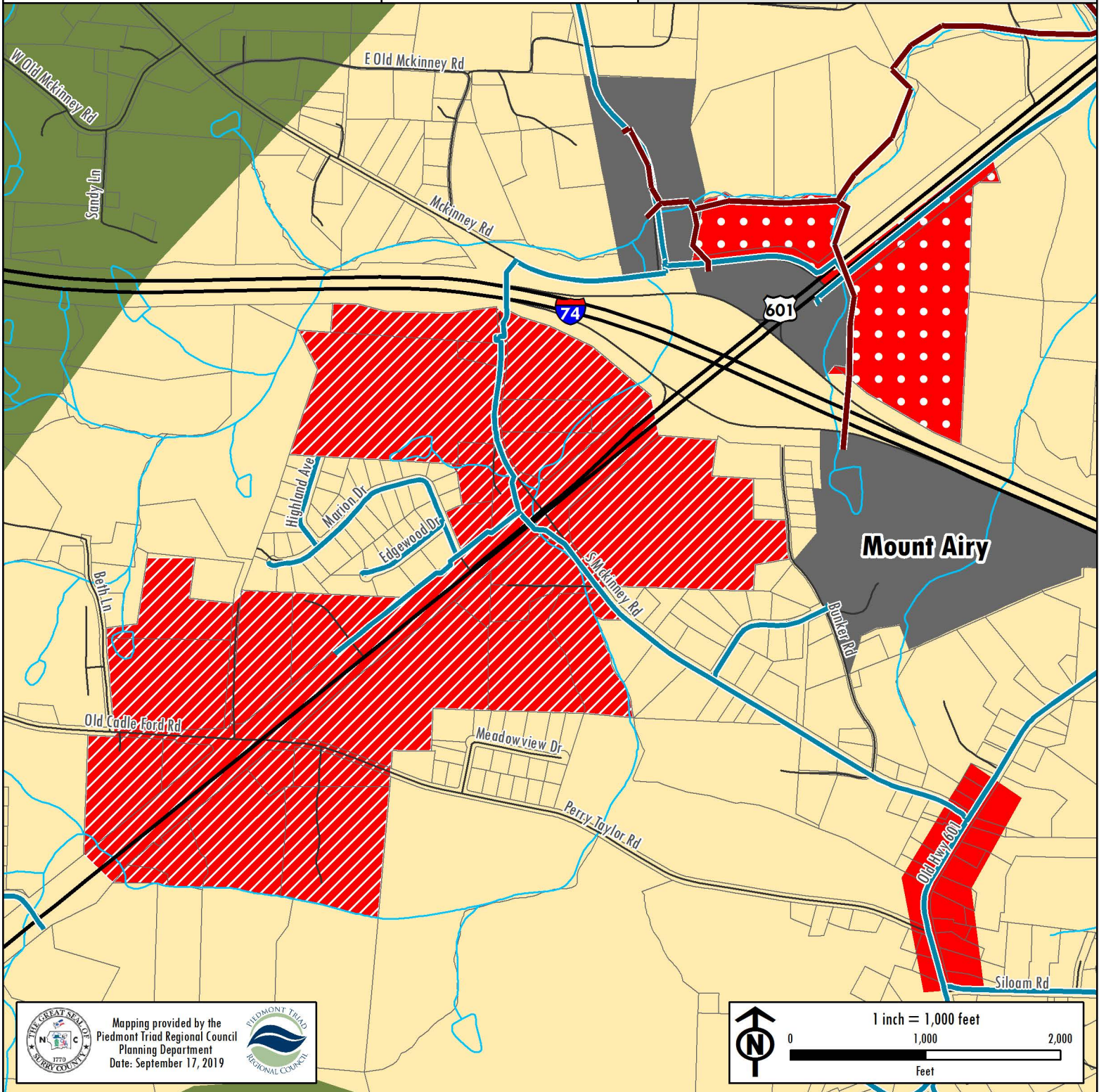
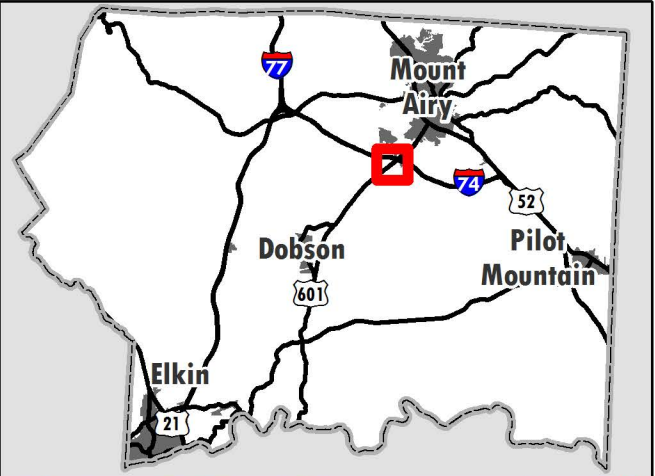
# SURRY COUNTY Land Use Plan

## SMALL AREA PLAN

I-74/US-601  
Interchange Area

### Future Land Use

-  Heavy Commercial
-  Moderate Commercial
-  Commercial Development
-  Rural
-  Rural Growth
-  Municipal
-  Sewer Line
-  Water Line
-  Stream



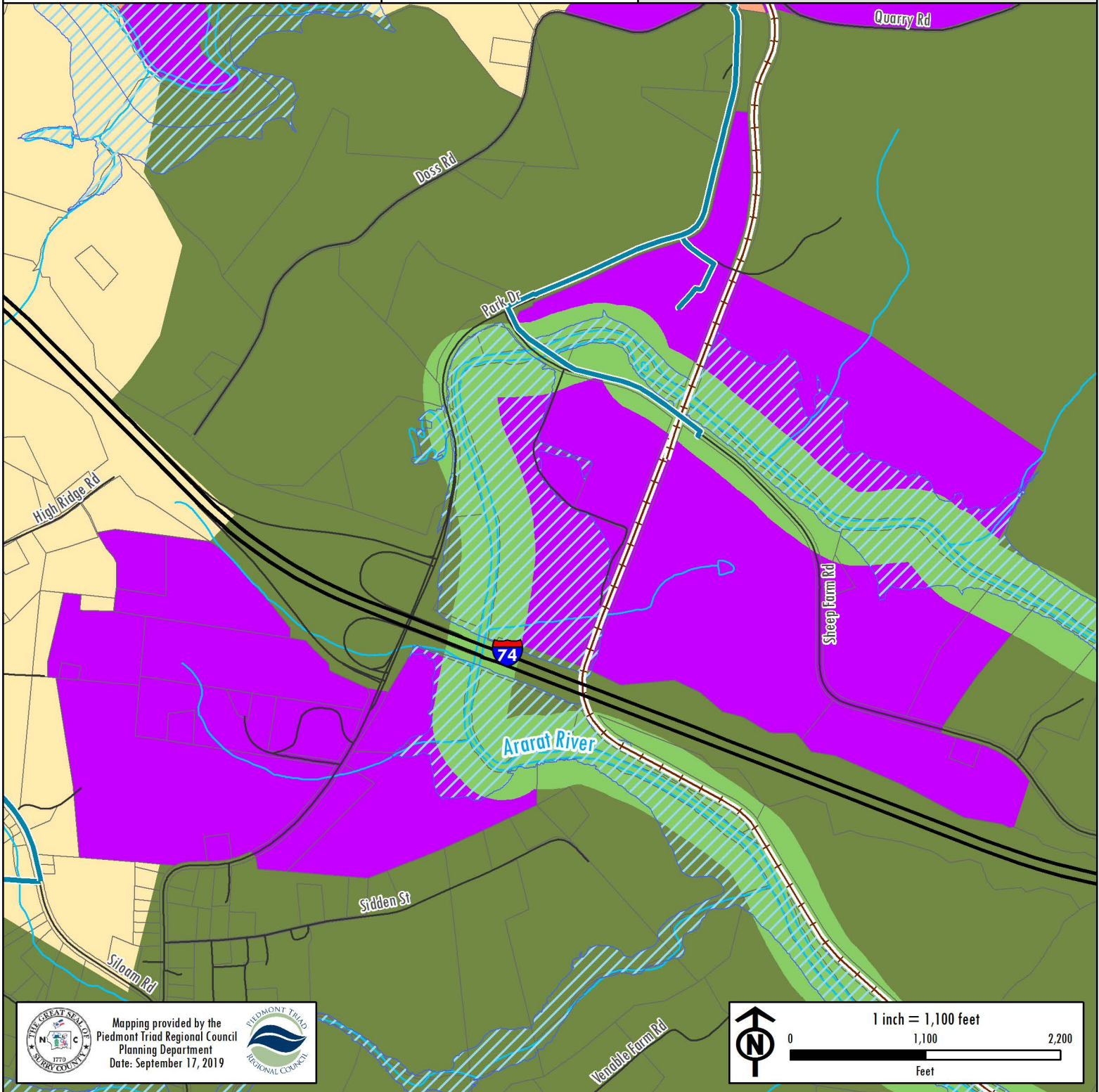
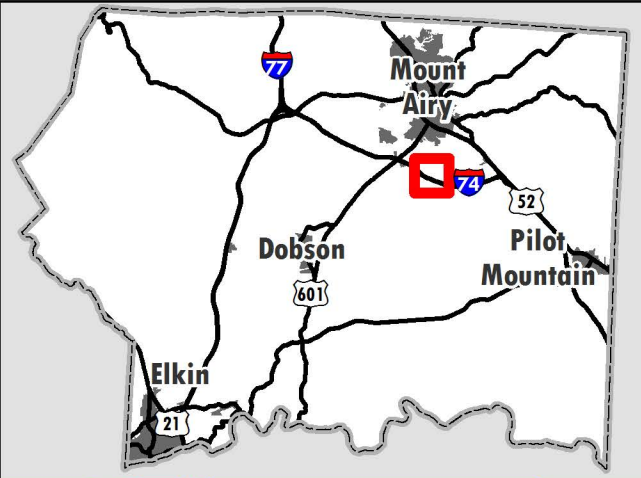
# SURRY COUNTY

## Land Use Plan

### SMALL AREA PLAN

#### I-74/Park Drive Intersection Area

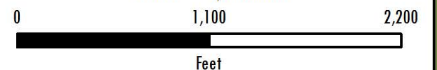
- Future Land Use**
- Industrial
  - Rural
  - Rural Conservation
  - Rural Growth
  - Mixed Residential
  - Municipal
  - Railroad
  - Water Line
  - Stream
  - 100-Year Floodplain



Mapping provided by the  
Piedmont Triad Regional Council  
Planning Department  
Date: September 17, 2019



1 inch = 1,100 feet







# SURRY COUNTY

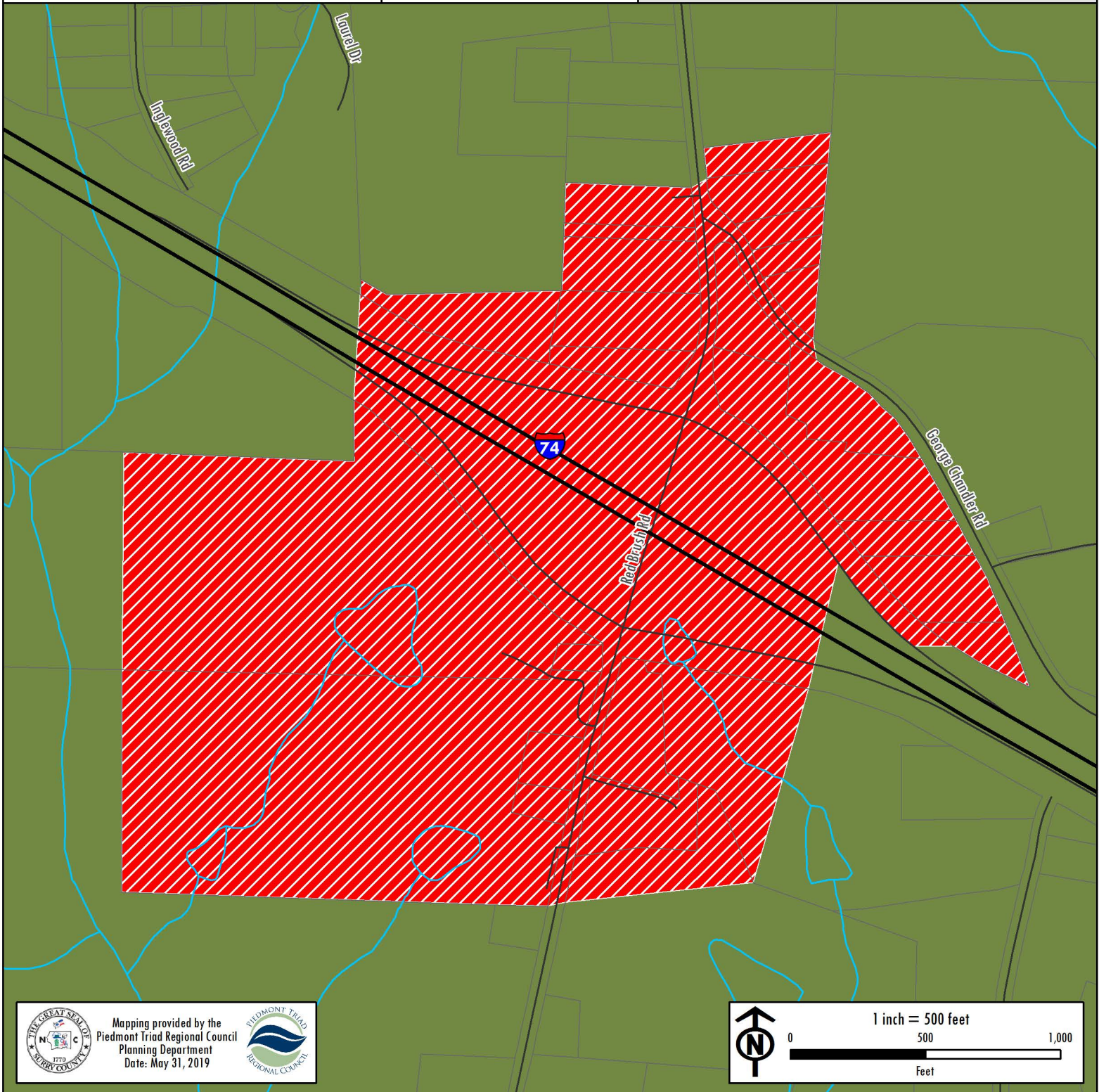
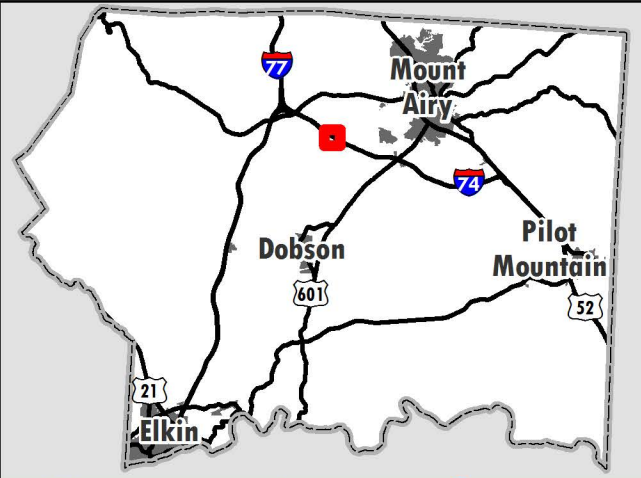
## Land Use Plan

### SMALL AREA PLAN

I-74/Red Brush Road  
Intersection Area

#### Future Land Use

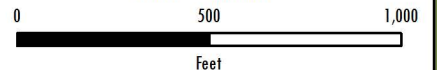
-  Moderate Commercial
-  Rural
-  Rural Growth
-  Stream



Mapping provided by the  
Piedmont Triad Regional Council  
Planning Department  
Date: May 31, 2019



1 inch = 500 feet











# SURRY COUNTY Land Use Plan

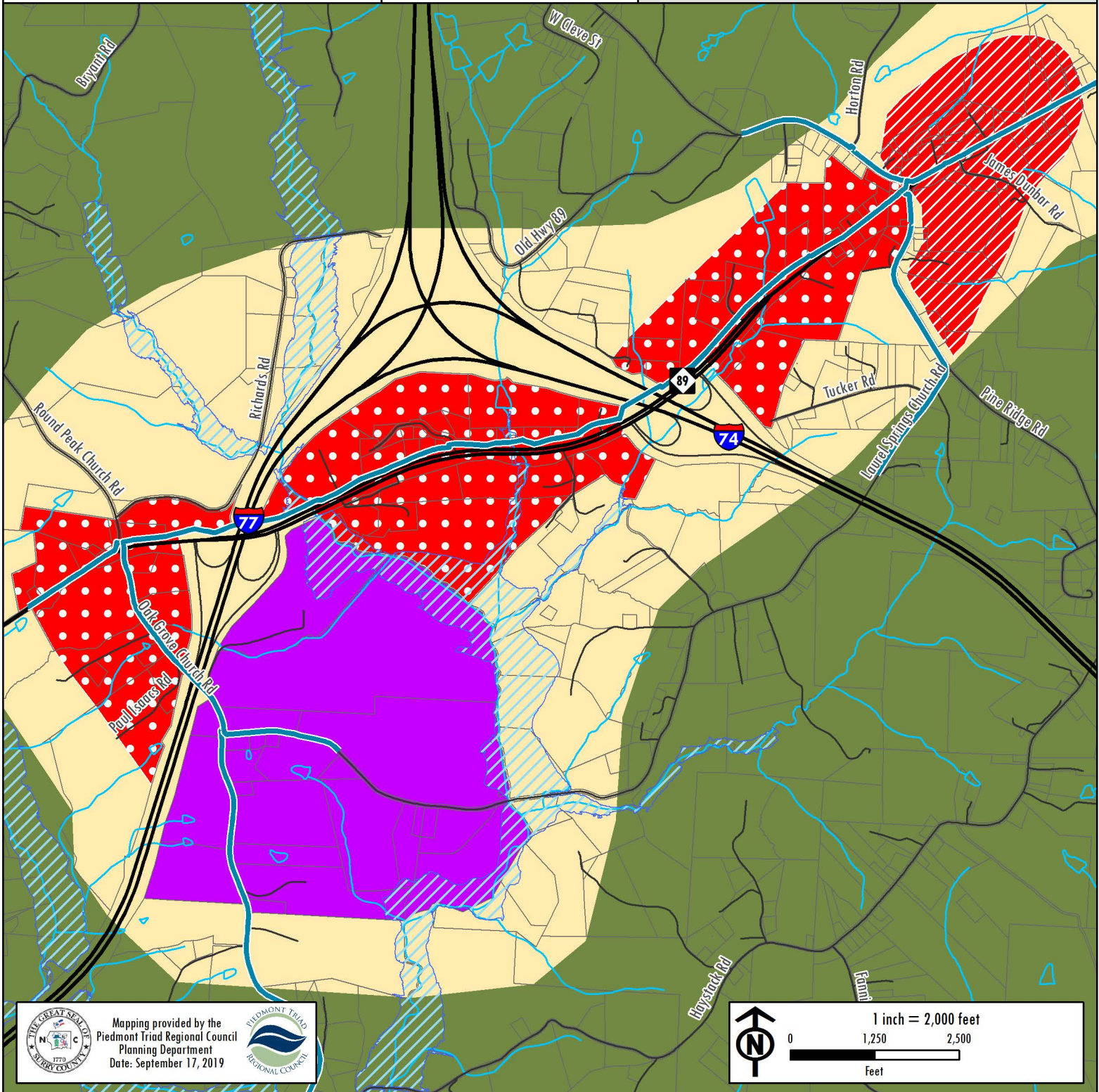
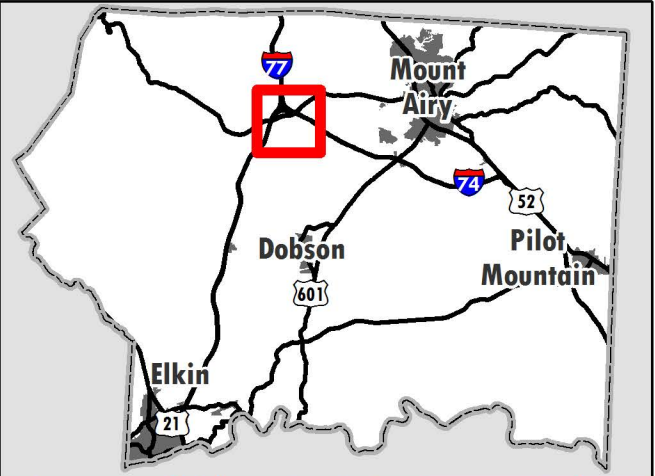
## SMALL AREA PLAN

I-77/I-74/NC-89

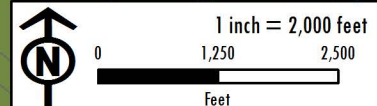
Intersection Area

### Future Land Use

-  Heavy Commercial
-  Moderate Commercial
-  Industrial
-  Rural
-  Rural Growth
-  Water Line
-  Stream
-  100-Year Floodplain



Mapping provided by the  
Piedmont Triad Regional Council  
Planning Department  
Date: September 17, 2019














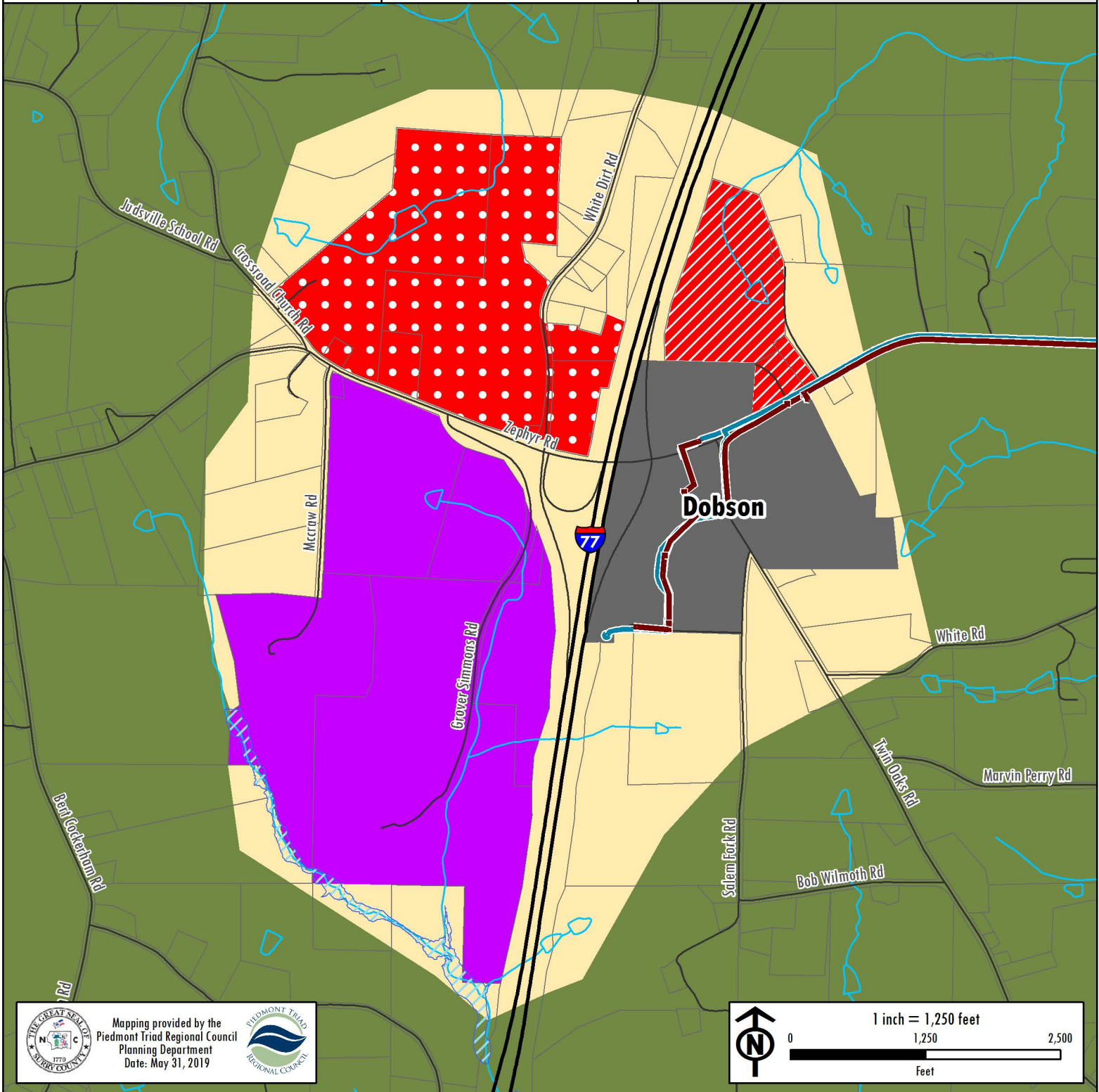
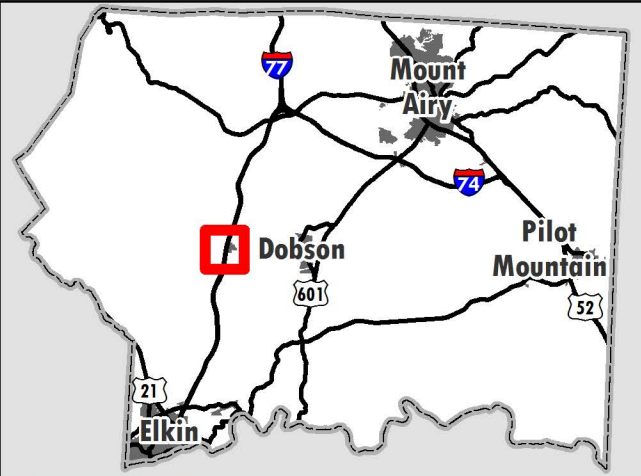
# SURRY COUNTY Land Use Plan

## SMALL AREA PLAN

### I-77/Zephyr Road Intersection Area

#### Future Land Use

-  Heavy Commercial
-  Moderate Commercial
-  Industrial
-  Rural
-  Rural Conservation
-  Rural Growth
-  Municipal
-  Sewer Line
-  Water Line
-  Stream
-  100-Year Floodplain




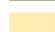




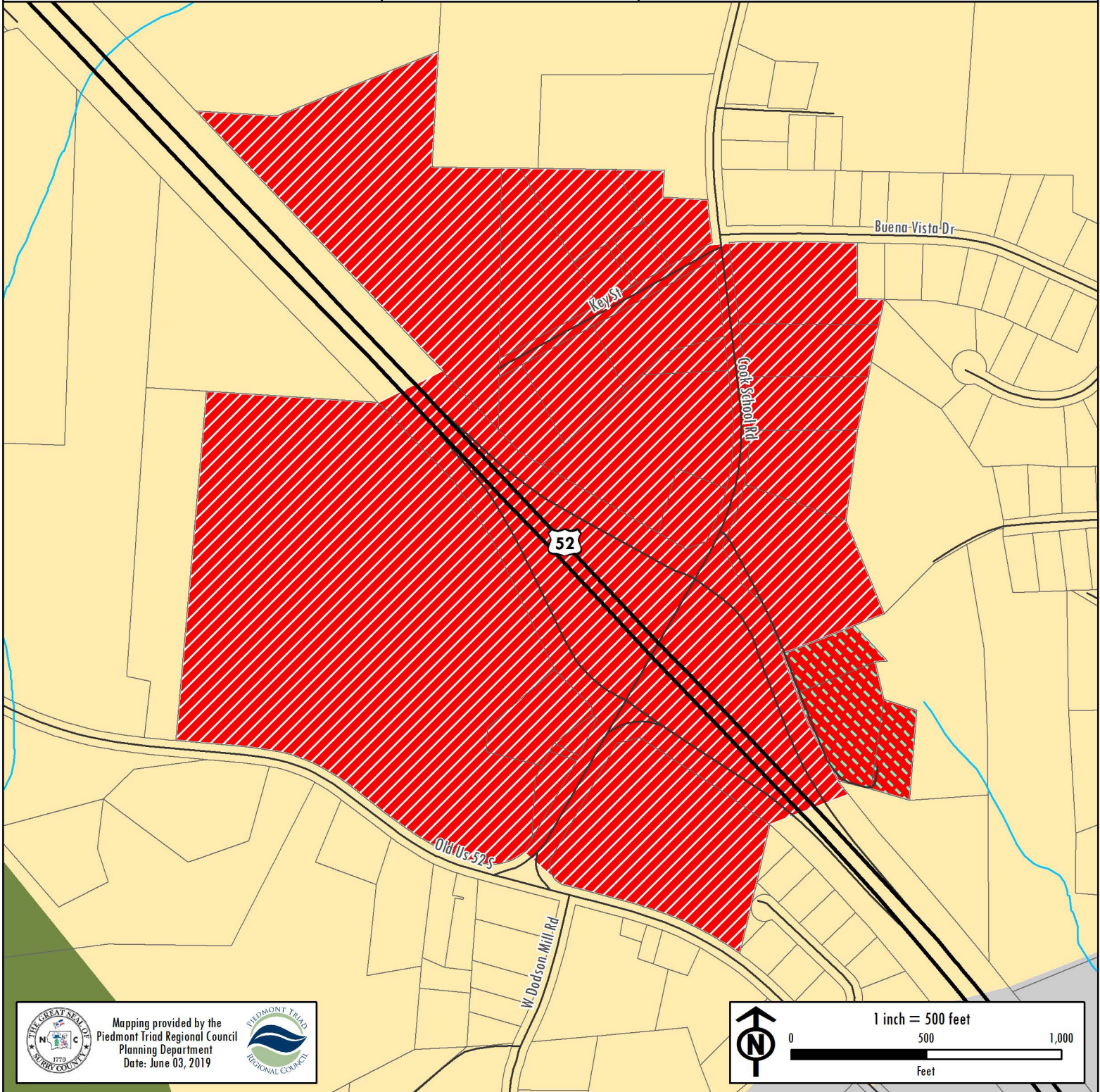
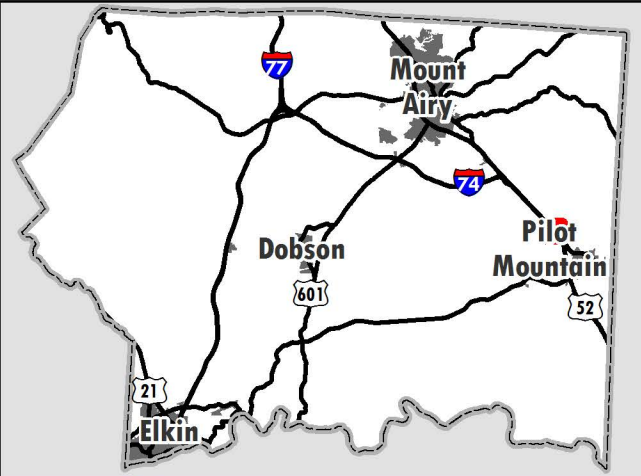
# SURRY COUNTY *Land Use Plan*

## SMALL AREA PLAN

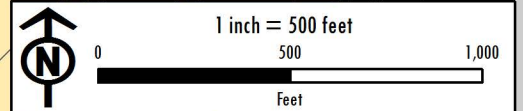
### US-52 & Cook School Road Intersection Area

#### Future Land Use

-  Office
-  Moderate Commercial
-  Rural
-  Rural Growth
-  ETJ
-  Stream



Mapping provided by the  
Piedmont Triad Regional Council  
Planning Department  
Date: June 03, 2019



# SURRY COUNTY

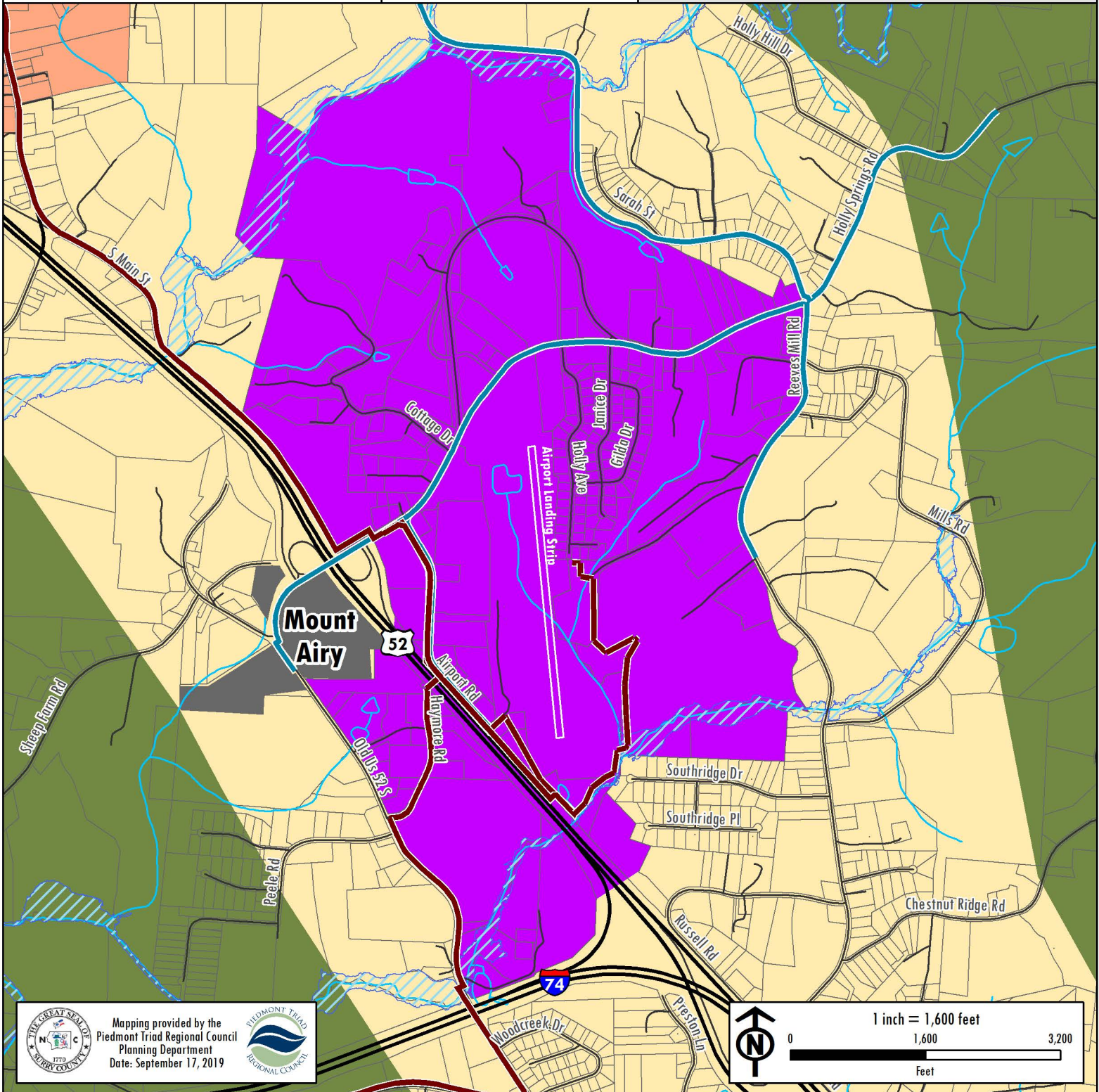
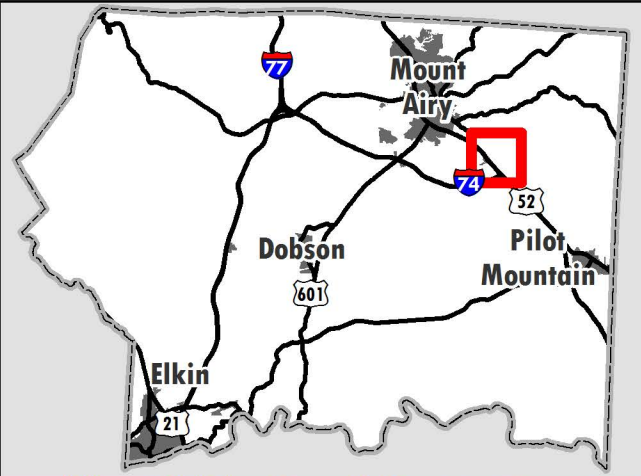
## Land Use Plan

### SMALL AREA PLAN

#### US-52 & Holly Springs Road Intersection Area

##### Future Land Use

- Industrial
- Rural
- Rural Conservation
- Rural Growth
- Mixed Residential
- Municipal
- Sewer Line
- Water Line
- Stream
- 100-Year Floodplain



Mapping provided by the  
Piedmont Triad Regional Council  
Planning Department  
Date: September 17, 2019

