



Piedmont Authority
for **Regional** Transportation

What's Happening at PART

Updates for April 2020

PART's Response to COVID-19

PART's leadership team began meeting and discussing potential impacts on service and how to protect all our employees the week of March 16th. We recognize that public transportation is a service that people enjoy, benefit from and rely on. PART staff, like transit agencies across the state, country and world, are taking unprecedented actions to provide a safe and reliable transportation option.

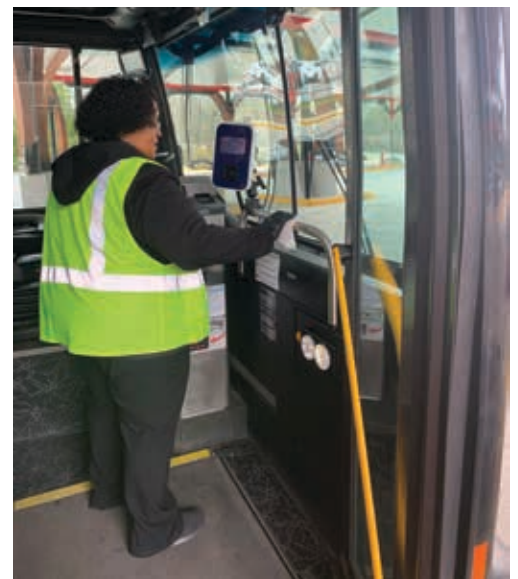
To protect our passengers and work force:

- Vehicles are cleaned with CDC and EPA approved sanitizing chemicals at least twice daily.
- All drivers remain employed even with the service reductions.
- Drivers are being rotated throughout the day between driving a route and cleaning vehicles.
- Drivers have been provided masks and gloves.
- Fares have been suspended to eliminate the need to handle money and paper transfers.

One societal response to the COVID-19 pandemic is social distancing and teleworking. This has led to a severe drop in transit ridership, again across the world. Service reductions and cancellations are common place. On March 25th PART implemented a service reduction plan due to a decrease in ridership. Over the period of a week PART saw as much as a 55% reduction in ridership system wide and an 80% decrease on Route 4 Alamance Burlington Express. The closure and telework mandate at the University of North Carolina at Chapel Hill and UNC Hospital are the direct cause of the reduction on Route 4.

The service reduction cut the base daily revenue hours from 226 to 110.5 or about 50%. The service changes that took effect on Wednesday March 25 include:

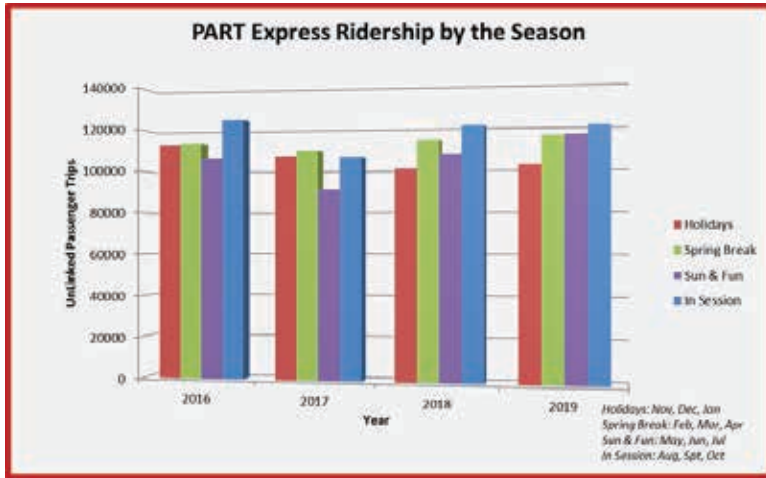
- * Route 1, 2, 3 will run on a Saturday schedule. 7:00am-7:00pm hourly.
- * Shuttles will run on a Saturday schedule. 7:00am-7:00pm hourly with scheduled pick-ups only.
- * Route 4 will be suspended.
- * Route 6 will run on a reduced schedule.
- * Route 28 will be suspended.
- * No changes to Route 5, 9, 10, and 17.



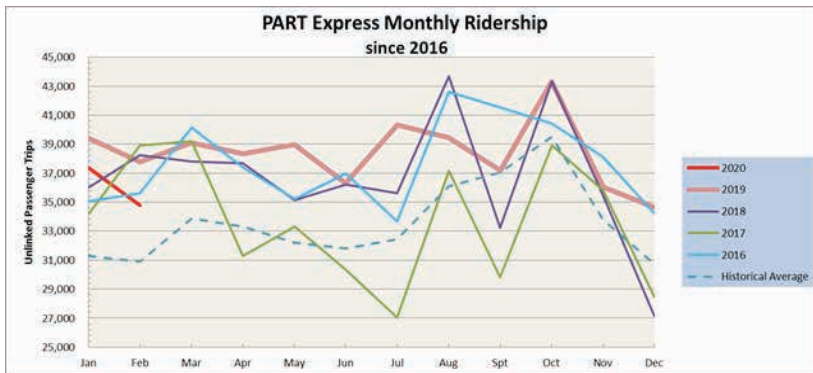
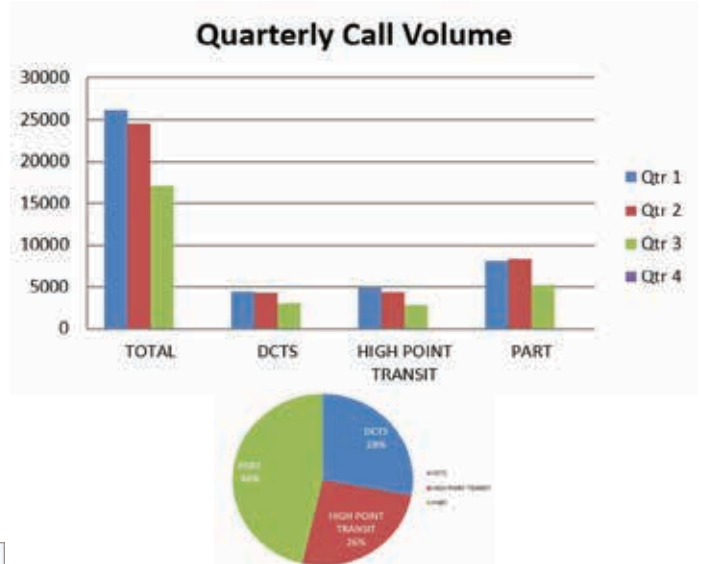
As with all aspects of life during this time, we are reassessing service delivery and safety concerns daily. Other changes, the national Get on Board Day sponsored by the American Public Transportation Association was canceled. Last month the Board approved a resolution recognizing April 16th as a fare free day as a means to promote public transportation and support existing passengers.

Updates for April 2020

PART Express Data

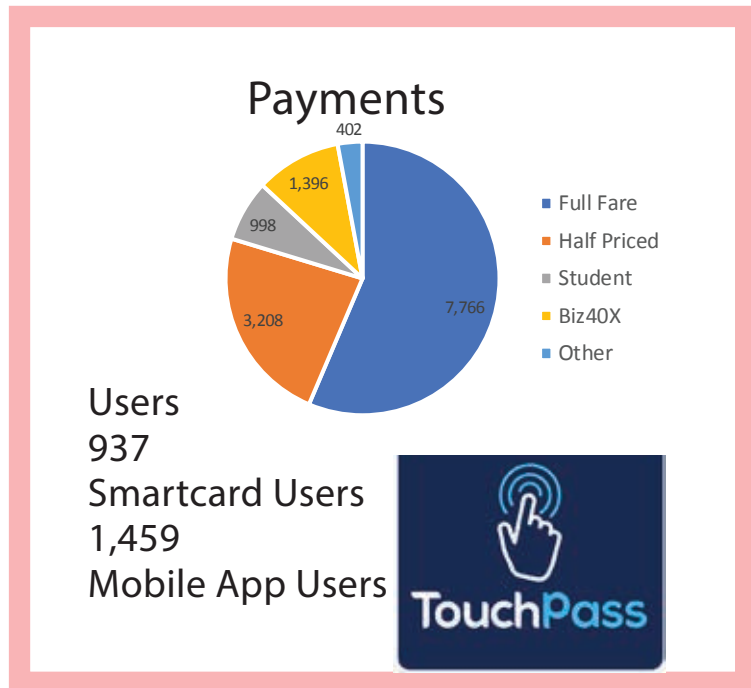


Piedmont Transit Resources Call Center



February PART Express Ridership totaled 34,796

PART recently purchased 3 new replacement shuttle vehicles. All are equipped a bike rack and wheel chair ramp.



STAY CONNECTED

Updates for April 2020

FTA Performance Measures

Two years ago PART adopted a Transit Asset Management Plan (TAM) as required by the Federal Transit Administration (FTA) giving PART, our partner MPOs, NCDOT and FTA, an estimation of the financial resources needed to replace and maintain federally funded assets, principally transit vehicle. This is part of an effort to document future needs. Phase two is the development of a Public Transportation Agency Safety Plan (PTASP) that implements a proactive, Safety Management System (SMS) approach to transit safety. The plan outlines how a SMS 1) incorporates monitoring, inspections and record keeping to identify risks and assess the severity and likelihood of safety events occurring, 2) details mitigations for risks deemed unacceptable and 3) sets safety performance targets based on PART's safety record. The plan is required of recipients and subrecipients of federal funding under the Urbanized Area Formula Program. Each transit agency is required to have a plan in place or be governed by a State plan no later than July 20, 2020. The plan is scheduled to be presented to the PART Board of Trustees at their April meeting.



"And now for something completely different." - Travel Demand Modeling

Each year PART, our MPO partners and the NCDOT – Transportation Planning Branch approves a work program and budget for the Piedmont Triad Regional Modeling Program. This year of the work plan includes a Household Travel Survey (HHTS) and further integration of CommunityViz, a new component of modeling tool box. The HHTS is a survey of household travel behavior in the Piedmont Triad. PART has secured Special Project Research funds from NCDOT to fund 70% to 80% of the project. The results from the survey are an input component of the Regional Travel Demand Model (RTDM). Work is scheduled to begin later this last year and take 12 to 18 months to complete.



The Piedmont Triad CommunityViz Model implementation is a regional project that includes PART, our MPO partners, NCDOT, and numerous planning and GIS departments from across the region. There has been great participation and excitement about the project. The goal is to produce the most accurate socio-economic data, a key input for the RTDM. Once implemented transportation and community planners will better understand where future growth will occur – with the hope of efficiently balancing future transportation infrastructure investments with the distribution of future growth.